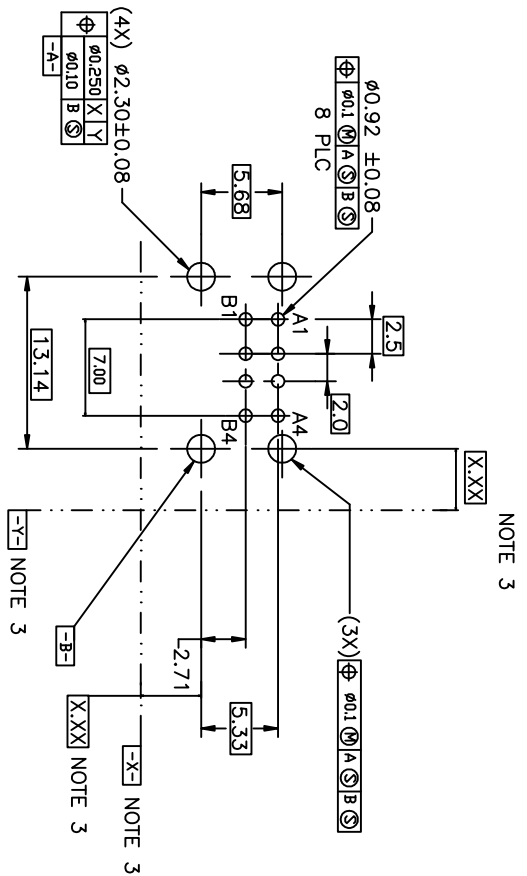
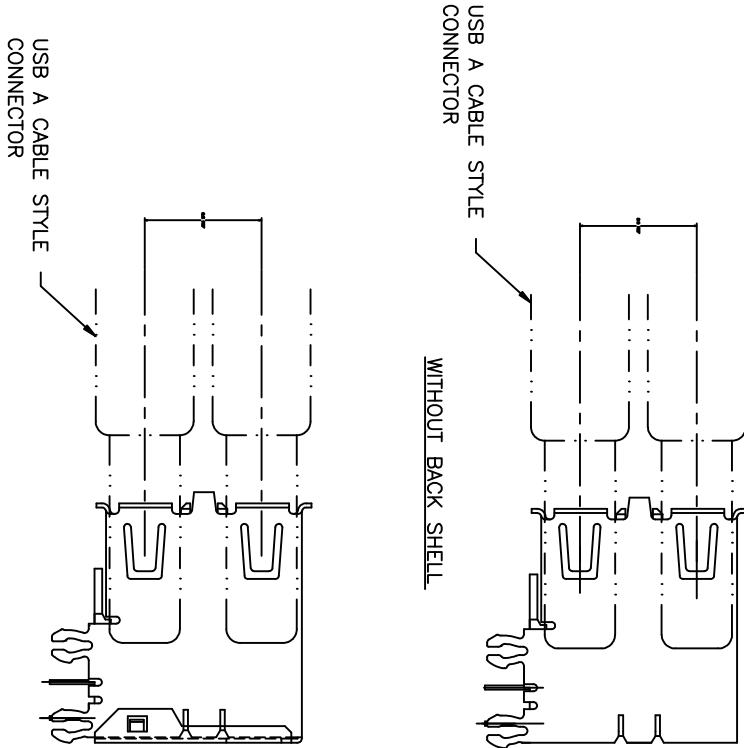


form no. 7530-001-103

1 | 2

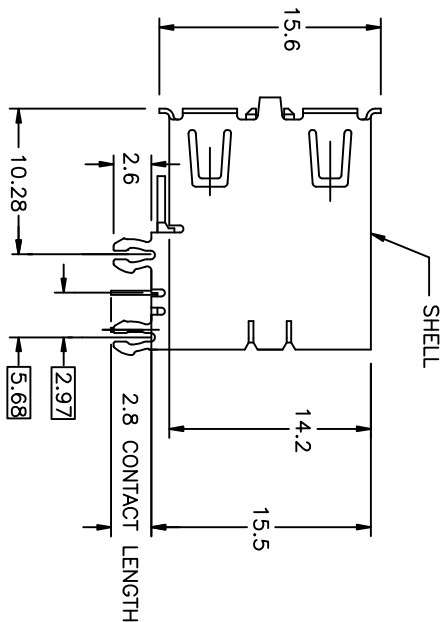
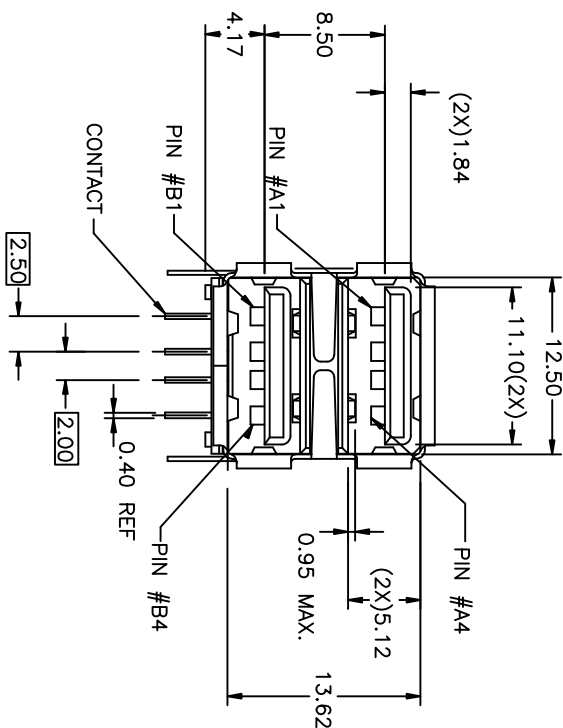
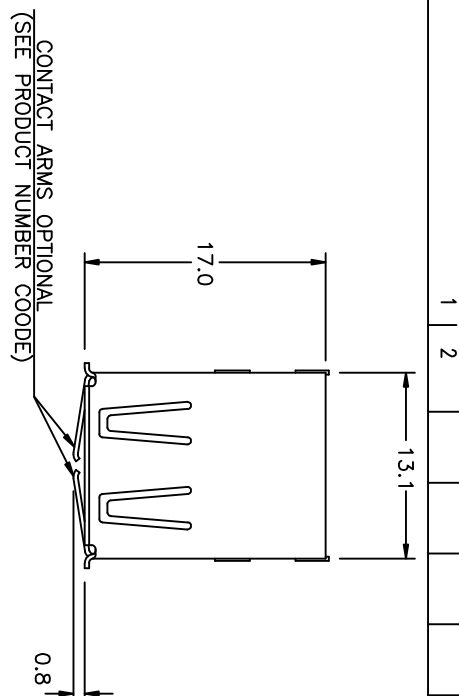


- NOTES:
1. MATERIAL:
CONTACTS-COPPER ALLOY
SHELL-COPPER ALLOY
HOUSING-UL 94-V-0 RATED THERMOPLASTIC.
 2. PLATING:
CONTACTS-0.76um MINIMUM GLOD FLASH OVER PALLADIUM
NICKEL IN CONTACT AREA OR 0.76um MIN GOLD FLASH
3.8um MINIMUM TIN-LEAD ON SOLDER TAILS
ALL OVER 1.27um MINIMUM NICKEL.
SHELL, 5um MINIMUM BRIGHT TIN
OVER 2.5um MINIMUM NICKEL.
 3. DATUM AND BASIC DIMENSIONS ESTABLISHED BY CUSTOMER.
 4. RECOMMENDED PC BOARD THICKNESS OF 1.57mm.
 5. P/N SEE PRODUCT NUMBER CODE.
(TO BE CONTINUED)

mat'l. code		NOTE 1 & 2		tolerances unless otherwise specified		CUSTOMER COPY		FCI		www.fciconnect.com	
ltr	ecn no	dr	date	linear	projection	scale	size	dwg no	family	code	sheet
AC	N05-0086	PH	03/09/05	linear	XX ±.20						
AD	N05-0106	PH	04/13/05	linear	XXX ±.10						
AE	N06-0101	HB	04/13/06	angles	0° ±.3°						
AF	N06-0133	HB	05/17/06	dr	PETER	12/10/97					
AA	T04-0206	WL	05/13/04	cht	R Y LUU	12/10/97					
AB	N04-0086	PH	11/09/04	qppd	JENN TSKO	12/10/97					
sheet	revision	Y	AA	Y	AE						
index	sheet	1	2	3	4						



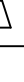

code code
22526

4



6. FOR LEAD FREE P/N, A LEAD FREE LABEL WILL APPEAR AT PACKING.
7. FOR LEAD FREE P/N, THE HOUSING WILL WITHSTAND EXPOSURE TO 260°C PEAK TEMPERATURE FOR 40 SECONDS IN A CONVECTION, INFRARED OR VAPOR PHASE REFLOW OVEN.
8. FOR LEAD FREE P/N, THE PRODUCT MEET EUROPEAN UNION DIRECTIVES AND OTHER COUNTRY REGULATION AS DESCRIBED IN GS-62-008

ASSEMBLY WITHOUT BACK SHIELD
72309-XX3XX SHOWN

mat'l. code				tolerances unless otherwise specified		CUSTOMER COPY		 www.fciconnect.com	
ltr	ecn no	dr	date	linear		projection		title	
AA				.X ±.30				UNIV. SERIAL BUS	
				.XXX ±.10				DOUBLE DECK RECEPTACLE	
				0° ±.3°					
				PETER PAM		mm		product family	
				R Y LUU				size dwg no	
				R Y LUU		scale		code	
				JENN T340		2 : 1		A4	
sheet	revision								sheet
index	sheet								2 of 4



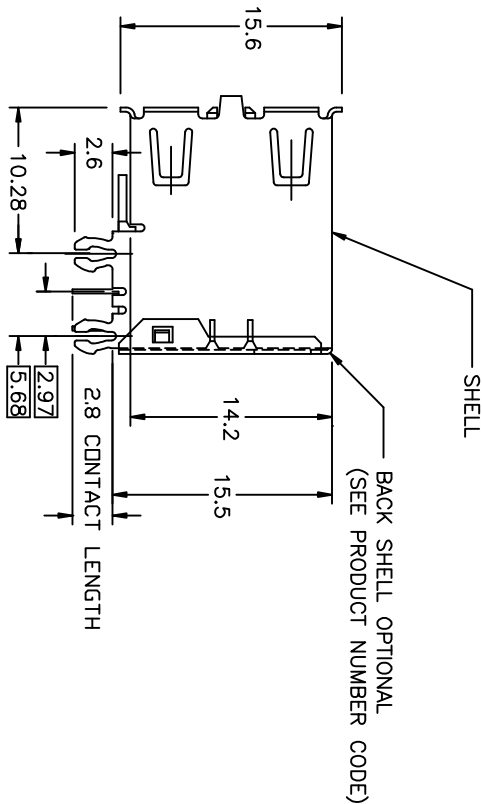
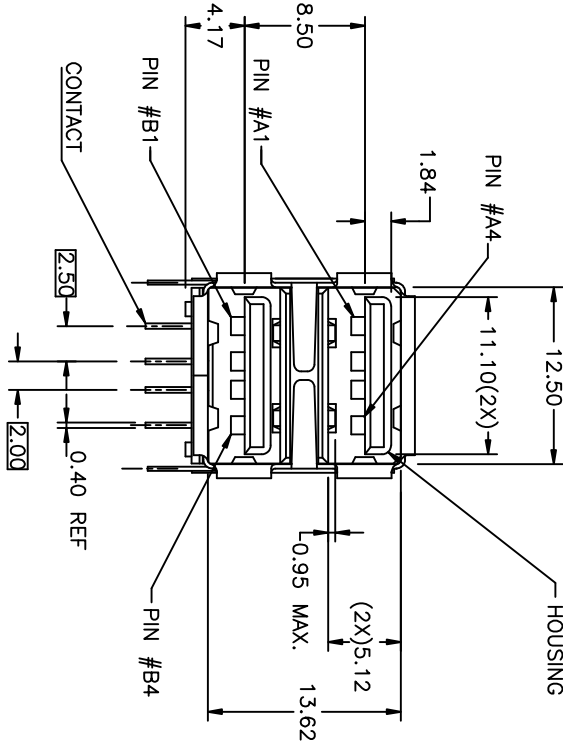
B

A

form no. 7530-001-103

1 | 2

ASSEMBLY WITH BACK SHIELD
72309 - XX4XX SHOWN



1 | 2

3 |

4

mat'l. code			tolerances unless otherwise specified			CUSTOMER			FCI		
ltr	ecn no	dr	date	linear	angles	projection	copy	title	product family	code	sheet
Y				.XX ±.20	0° ±.5°	⌀		UNIV. SERIAL BUS	USB		3 of
				.XXX ±.10		⌀		DOUBLE DECK RECEPTACLE			
						mm					
				dr	PETER PM	12/01/97		size dwg no			
				engr	R Y LU	12/10/97					
				chr	R Y LU	12/10/97					
				appd	JENN TSAO	12/10/97					
sheet	revision										
index	sheet										

3 |

4

code code
22526



PRODUCT NUMBER CODE

72309 -

X

X

X

X

X

P

S

LF

BASE PRODUCT NUMBER

HOUSING COLOR + SHELL PLATING OPTIONS

- 0 - WHITE + NICKEL & TIN LEAD PLATING
- 1 - BLACK + NICKEL & TIN LEAD PLATING
- 2 - WHITE + NICKEL PLATING ONLY
- 3 - BLACK + NICKEL PLATING ONLY
- 4 - WHITE + NICKEL PLATING ONLY + LCP HSG
- 5 - BLACK + NICKEL PLATING ONLY + LCP HSG
- 6 - BLACK + NICKEL & TIN LEAD PLATING + LCP HSG
- 7 - BLACK + NICKEL & BRIGHT TIN PLATING
- 8 - WHITE + NICKEL & BRIGHT TIN PLATING
- 9 - BLACK + NICKEL & BRIGHT TIN PLATING + LCP HSG

SHELL PLATING OPTION

- 0 - BARREL-PLATING
- 1 - PRE-PLATING

SHELL OPTIONS

- 1 - NO BACK SHIELD, NO ARMS, FRONT GROUNDING ARMS
- 2 - BACK SHIELD, NO FRONT GROUNDING ARMS
- 3 - NO BACK SHIELD, FRONT GROUNDING ARMS
- 4 - BACK SHIELD, FRONT GROUNDING ARMS

TERMINAL PLATING OPTION

- 0 - 50u" NI UNDERPLATE
30u" GXT CONTACT AREA
100u" TIN/LEAD TAIL AREA
- 2 - 50u" NI UNDERPLATE
30u" GOLD CONTACT AREA
100u" TIN/LEAD TAIL AREA
- 3 - 50u" NI UNDERPLATE
30u" GOLD CONTACT AREA
100u" MATTE TIN TAIL AREA
- 4 - 50u" NI UNDERPLATE
30u" GXT CONTACT AREA
100u" MATTE TIN TAIL AREA

PACKAGING OPTIONS

- B - TUBES
- R - TAPE & REEL

WITH DATE CODE

ONLY FOR PANASONIC

LEAD FREE MARK

LEAD FREE CONVERSION RULES -

HOUSING COLOR AND SHELL PLATING OPTION: 0 TO 8, 1 TO 7, 6 TO 9
TERMINAL PLATING OPTION: 0 TO 4, 2 TO 3

NOTE:

AVAILABLE P/N'S IN FCI NOW FOLLOWED:

72309-0010X/8014XLF	72309-2010X/2014XLF
72309-0012X/8013XLF	72309-2012X/2013XLF
72309-0020X/8024XLF	72309-2020X/2024XLF
72309-0022X/8023XLF	72309-2022X/2023XLF
72309-0030X/8034XLF	72309-2030X/2034XLF
72309-0032X/8033XLF	72309-2032X/2033XLF
72309-0040X/8044XLF	72309-2040X/2044XLF
72309-0042X/8043XLF	72309-2042X/2043XLF
72309-1010X/7014XLF	72309-3010X/3014XLF
72309-1012X/7013XLF	72309-3012X/3013XLF
72309-1020X/7024XLF	72309-3020X/3024XLF
72309-1022X/7023XLF	72309-3022X/3023XLF
72309-1030X/7034XLF	72309-3030X/3034XLF
72309-1032X/7033XLF	72309-3032X/3033XLF
72309-1040X/7044XLF	72309-3040X/3044XLF
72309-1042X/7043XLF	72309-3042X/3043XLF
72309-0110X/8114XLF	72309-4010X/4014XLF
72309-0112X/8113XLF	72309-4012X/4013XLF
72309-0120X/8124XLF	72309-5010X/5014XLF
72309-0122X/8123XLF	72309-5012X/5013XLF
72309-0130X/8134XLF	72309-5030X/5034XLF
72309-0132X/8133XLF	72309-5032X/5033XLF
72309-0140X/8144XLF	72309-5040X/5044XLF
72309-0142X/8143XLF	72309-5042X/5043XLF
72309-1110X/7114XLF	72309-6010X/6014XLF
72309-1112X/7113XLF	72309-6012X/6013XLF
72309-1120X/7124XLF	72309-6020X/6024XLF
72309-1122X/7123XLF	
72309-1130X/7134XLF	
72309-1132X/7133XLF	
72309-1140X/7144XLF	
72309-1142X/7143XLF	

mat'l. code	NOTE 1 & 2	dr	date	tolerances unless otherwise specified	CUSTOMER COPY	FCI	www.fciconnect.com
ltr	ecr	no					
AE				linear			
				angles			
				dr			
				engr			
				chr			
				oppl			
sheet	revision						
index	sheet						

projection
DOUBLE DECK RECEPTACLE

product family
USB

72309

sheet
4 of