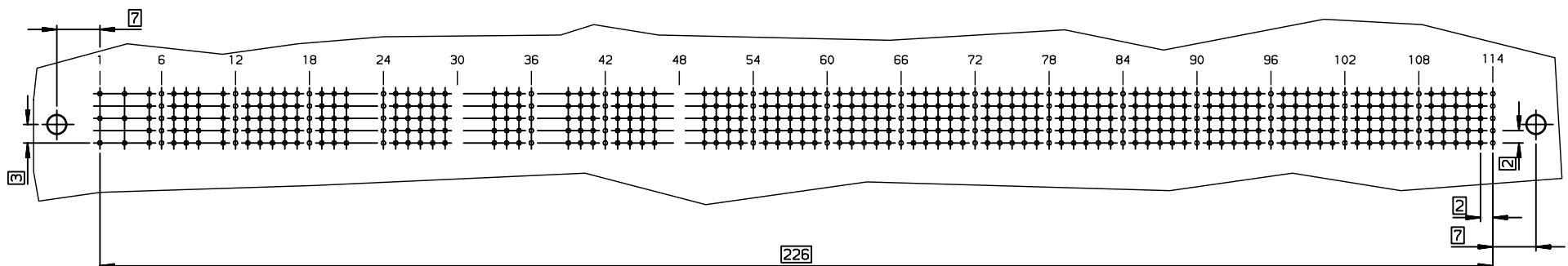


LAYOUT FOR P.C.B / CONNECTOR SIDE / SCALE 1.5/1

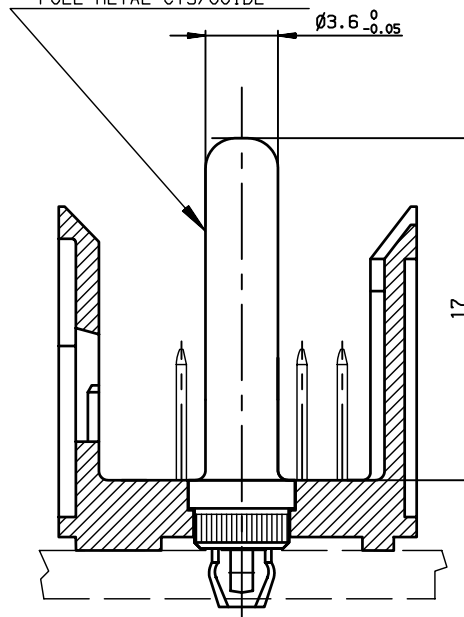
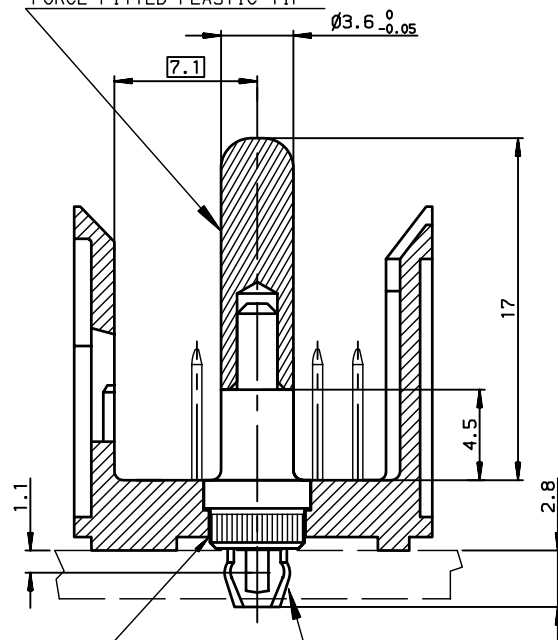


INSERT IN POSITION -01

INSERT IN POSITION -21

FORCE FITTED PLASTIC TIP

FULL METAL CTS/GUIDE



HIGH POWER PRESS-FIT TERMINATION

FORCE FITTED IN HOUSING

DETAIL OF POWER/GUIDE CONTACT / SCALE 4/1

OTHER INFORMATIONS SEE DRAWING N° C-8626-0942-1

NOTE-1: "EYE OF THE NEEDLE" PRESS-FIT PIN TYPE

NOTE-2: POWER CONTACT CAVITY ACCORDING TO IEC-48B/424/CDV AND DIN 41612 TEIL-8

NOTE-3: POWER CONTACTS ARE INSERTED IN HOUSING BEFORE DELIVERY
POWER CONTACTS WITH EYE OF THE NEEDLE PRESS-FIT TERMINATION
POWER CONTACTS COMPATIBLE WITH RATING CURRENT = 40 A MAXI

NOTE-4: IF SUFFIX "P" IS ADDED IN P/N, PACKAGING IS IN TRAYS
BUT CONNECTOR MARKING IS WITHOUT "P"
EXAMPLE: HM1D59ZZR470H6P, MARKED HM1D59ZZR470H6

European Views

www.fciconnect.com			surface ISO 1302	tolerance std ISO 406 ISO 1101	projection mm
			TOLERANCES UNLESS OTHERWISE SPECIFIED		
Dr	CHAMPION	1999/01/12	ANGULAR 0.XX' ±2'	0.X	±0.1
Eng	LENOIR	1999/01/12		0.XX	±0.1
Chr	LEGARE	1999/01/12		0.XXX	±0.1
Appr	LEGARE	1999/01/12	Product family	METRAL	
			size A3		Scale 4
			ECN LS07-0012		Spec ref -
			title METRAL MALE 5 ROWS 501+2 WAYS		Rev. L
			SPECIFIC FOR NORTHERN TELECOM		
			catalog no	CUSTOMER sheet 2 of 2	

rev	ecn no	dr	date
F	-	PER	2003/06/12
J	LS05-004	MLE	2005/02/19
K	LS06-0097	LGO	2006/07/25
L	LS07-0012	MLE	2007/03/30
-	-	-	-
-	-	-	-
-	-	-	-

REV F - 2006-04-17