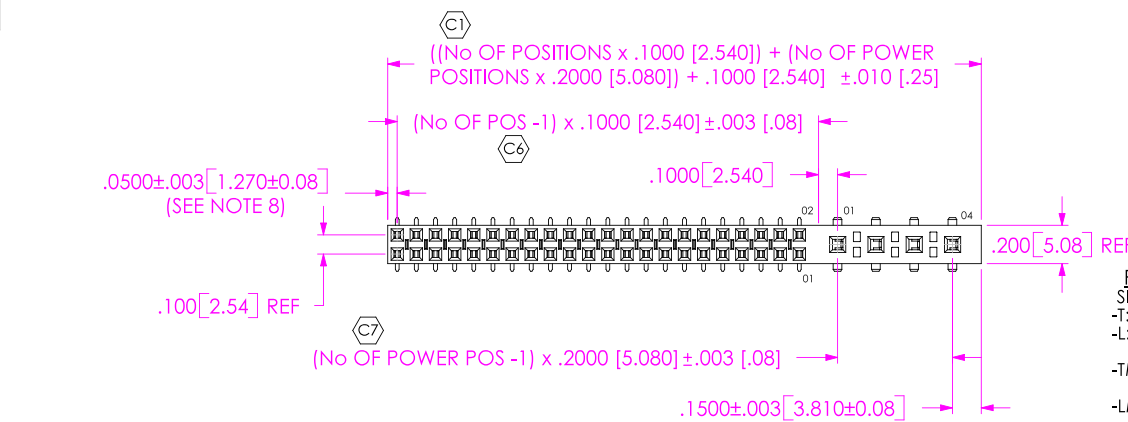


DO NOT SCALE FROM THIS PRINT

HPFC-1XX-XX-XX-D-XX-XX



No OF POSITIONS

-02 THRU -24 (PER ROW)

LEAD STYLE

-01: THROUGH HOLE (C-95-01-X & C-130-01-XX)  
 -02: SURFACE MOUNT (C-95-02-X & C-130-02-XX)

PLATING SPECIFICATION

SIGNAL ONLY  
 -T: TIN (USE C-95-XX-T & C-130-XX-T)  
 -L: LIGHT SELECTIVE (USE C-95-XX-L & C-130-XX-T)  
 -TM: MATTE TIN (USE C-95-XX-TM & C-130-XX-TM)  
 -LM: LIGHT SELECTIVE GOLD, MATTE TIN TAIL (USE C-95-XX-LM & C-130-XX-TM)

OPTION

-LC: LOCKING CLIP  
 \* -A: ALIGNMENT PIN (USE HPFC-XX-D-XX-A)  
 -K: KAPTON PAD (SHEET 2) (USE K-500-300)

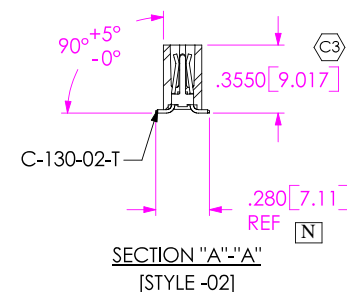
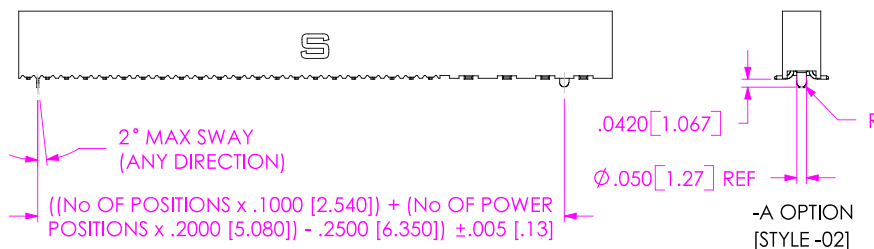
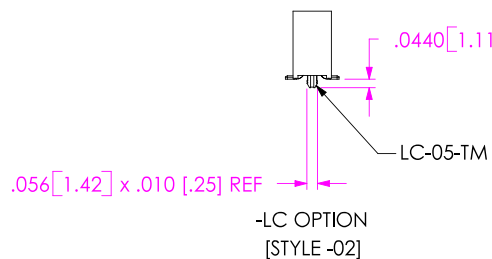
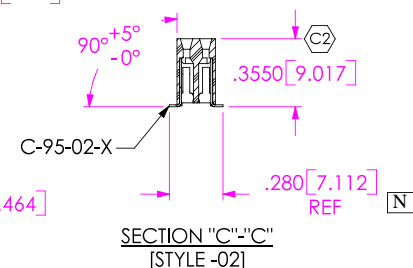
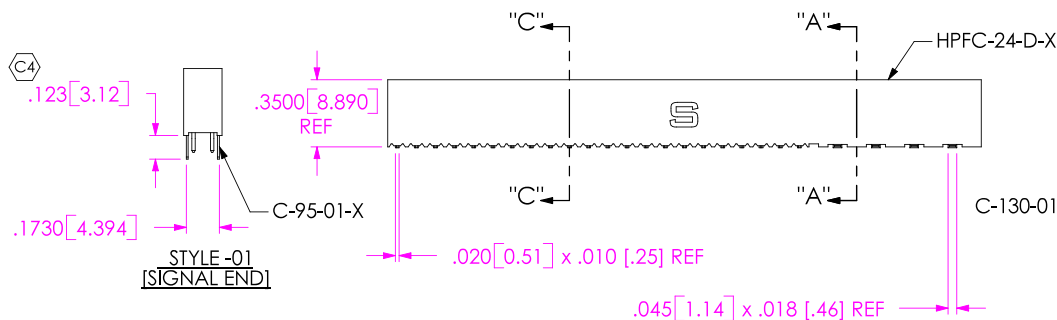
POWER POSITIONS

-02 THRU -04 (USE C-130-XX-XX)

ROW SPECIFICATION

-D: DOUBLE (USE HPFC-24-D-X)

\* = NOT ENGINEERING APPROVED



NOTES:

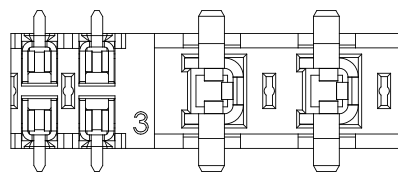
1. (C) REPRESENTS A CRITICAL DIMENSION.
2. COPLANARITY TO BE WITHIN .006" [.15] FOR 20 POSITION AND BELOW (SIGNAL) AND .008" [.20] FOR 21 -32 POS. (SIGNAL).
3. BURR ALLOWANCE: .003 [.08] MAX.
4. MAXIMUM CUT FLASH: .020 [.51].
5. MINIMUM PUSHOUT FORCE: 1 LB. MIN ON SIGNAL POSITIONS, 2 LB. MIN ON POWER POSITIONS.
6. MAXIMUM ALLOWABLE BOW: .005 INCH/INCH [MM/MM] AFTER ASSEMBLY.
7. OPEN PART OF POWER CONTACT FILLED TOWARDS SIGNAL CONTACTS.
8. MINIMUM WALL THICKNESS TO BE .010 [.25].

PACKAGING VIEW



TUBE: PT-1-24-02-44  
 PLUG: TP-09

TUBE: PT-1-24-01-69  
 PLUG: TP-09



DETAIL 'B'  
 SCALE 3:1

UNLESS OTHERWISE SPECIFIED, DIMENSIONS ARE IN INCHES.

TOLERANCES ARE:

DECIMALS ANGLES  
 .XX: ±.01 [.3]  
 .XXX: ±.005 [.13]  
 .XXXX: ±.0020 [.051]

PROPRIETARY NOTE

THIS DOCUMENT CONTAINS INFORMATION CONFIDENTIAL AND PROPRIETARY TO SAMTEC, INC. AND SHALL NOT BE REPRODUCED OR TRANSFERRED TO OTHER DOCUMENTS OR DISCLOSED TO OTHERS OR USED FOR ANY PURPOSE OTHER THAN THAT WHICH IT WAS OBTAINED WITHOUT THE EXPRESSED WRITTEN CONSENT OF SAMTEC, INC.

MATERIAL: DO NOT SCALE DRAWING  
 INSULATOR: VECTRA E130i COLOR: BLACK  
 POWER CONTACT: BeCu 174HT  
 SIGNAL CONTACT: PHOS BRONZE CDA510

SHEET SCALE: 1:1

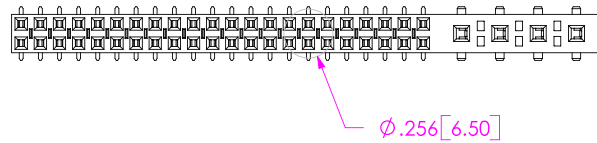
**SAMTEC**

520 PARK EAST BLVD, NEW ALBANY, IN 47150  
 PHONE: 812.944.6733 FAX: 812.948.5047  
 e-Mail: [INEO@SAMTEC.COM](mailto:INEO@SAMTEC.COM) CODE: 55322

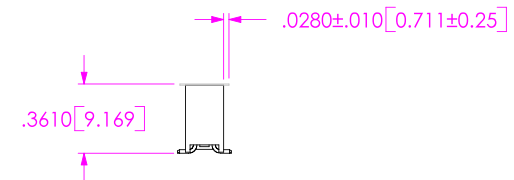
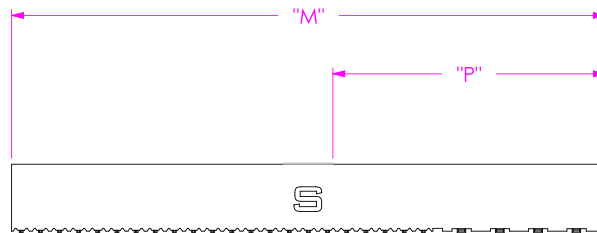
DESCRIPTION: .200 [5.08] POWER COMBO SOCKET ASSEMBLY

DWG. NO. HPFC-1XX-XX-XX-D-XX-XX

BY: DEAN P 01/06/1999 SHEET 1 OF 2



NOTE: "M" = TOTAL PART LENGTH (REF)  
 "P" =  $\{("M" - .256 [6.50]) / 2\} \pm .020 [51]$



-K OPTION  
 (SHOWN: HPFC-122-02-X-D-4-K)

<p><b>PROPRIETARY NOTE</b>                  THIS DOCUMENT CONTAINS INFORMATION CONFIDENTIAL AND PROPRIETARY TO SAMTEC, INC. AND SHALL NOT BE REPRODUCED OR TRANSFERRED TO OTHER DOCUMENTS OR DISCLOSED TO OTHERS OR USED FOR ANY PURPOSE OTHER THAN THAT WHICH IT WAS OBTAINED WITHOUT THE EXPRESSED WRITTEN CONSENT OF SAMTEC, INC.</p> <p>DO NOT SCALE DRAWING</p> <p>SHEET SCALE: 1:1</p>	<p><b>SAMTEC</b></p> <p>520 PARK EAST BLVD, NEW ALBANY, IN 47150                  PHONE: 812.944.6733 FAX: 812.948.5047                  e-Mail: <a href="mailto:INEO@SAMTEC.COM">INEO@SAMTEC.COM</a> CODE: 55322</p>
	<p>DESCRIPTION:                  .200 [5.08] POWER COMBO SOCKET ASSEMBLY</p> <p>DWG. NO. HPFC-1XX-XX-XX-D-XX-XX</p>
<p>BY: DEAN P 01/06/1999 SHEET 2 OF 2</p>	