

### Conformity to RoHS Directive

## FEATURES

- ## PRODUCT IDENTIFICATION

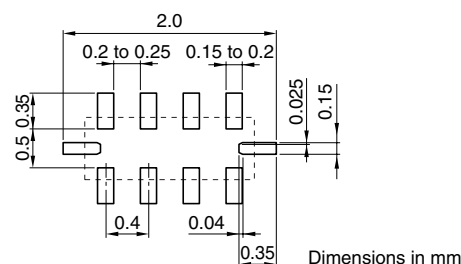
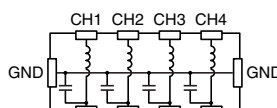
(1)Series name	(4)Capacitance (pF)
(2)Dimensions L×W	C220: 22pF
(3)L type circuit	(5)Packaging style T:Taping

For LCD and camera signal lines in mobile phone.

Operating	-40 to +85°C
-----------	--------------

## PACKAGING STYLE AND QUANTITIES

Packaging style	Quantity
Taping	4000 pieces/reel



Weight: 3.5mg  
Dimensions in mm

## ELECTRICAL CHARACTERISTICS

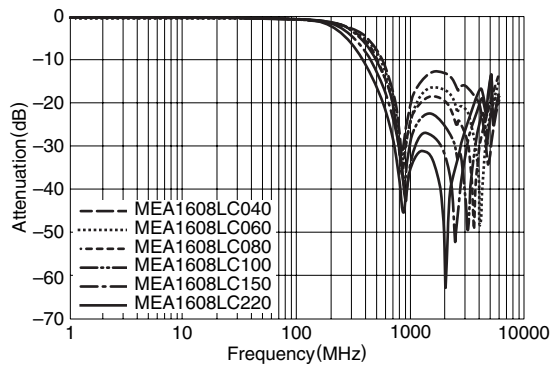
Part No.	Rated voltage (V)max.	Rated current (mA)max.	Capacitance (pF)	Attenuation(dB)typ. [800MHz to 2GHz]
MEA1608LC040	6.3	100	4	10
MEA1608LC060	6.3	100	6	15
MEA1608LC080	6.3	100	8	15
MEA1608LC100	6.3	100	10	20
MEA1608LC150	6.3	100	15	20
MEA1608LC220	6.3	100	22	20

- **Conformity to RoHS Directive:** This means that, in conformity with EU Directive 2002/95/EC, lead, cadmium, mercury, hexavalent chromium, and specific bromine-based flame retardants, PBB and PBDE, have not been used, except for exempted applications.
- **Please contact our Sales office when your application are considered the following:**  
The device's failure or malfunction may directly endanger human life (e.g. application for automobile/aircraft/medical/nuclear power devices. etc.)

- All specifications are subject to change without notice.

## TYPICAL ELECTRICAL CHARACTERISTICS

### ATTENUATION vs. FREQUENCY CHARACTERISTICS



## RECOMMENDED SOLDERING CONDITION

### REFLOW SOLDERING

