

MF 10 Series Subminiature, Waterproof Duplex Fiber Optic Connectors

Product Specifications

Ratings	Operating temperature range	-40℃ to +85℃	Storage temperature range	-25℃ to +75℃
---------	-----------------------------	--------------	---------------------------	--------------

	Item	Test method	Specifications
Optical characteristics	Insertion loss	<div><div>Light source</div><div>Wavelength 1310±30nm(LED)</div><div>Vm</div><div>Sensor</div><div>Sample Under Test</div><div>Master connector</div><div>V0</div><div>Insertion loss= -10log(Vm/V0)</div></div>	SM: 1.4dB max. (Average 0.3dB) MM: 0.7dB max. (Average 0.1dB) (Note)
Mechanical characteristics	Cable retention (Straight pull)	200N tensile loads	1) Insertion loss fluctuation after test: 0.3dB max. 2) No visible damage or components dislocation.
	Durability (mating/un-mating)	200 times	
	Vibration	Frequency: 10 to 55Hz, single amplitude of 0.75mm, acceleration of 98.1 m/s ² , 2 hours in each of the 2 axis.	
	Shock	Acceleration of 981 m/s ² , 6 ms duration, sine half-wave waveform, 3 cycles in each of the 2 axis.	
Environmental characteristics	Humidity (Temperature/humidity-cycles)	-10℃ to +65℃, humidity: 90% to 96% 10 cycles (240 hours)	1) Insertion loss fluctuation after test: 0.3dB max. 2) No visible damage or components dislocation.
	Temperature cycle	-40℃ to +75℃, 42 cycles	
	Dry heat	240 hours at +85℃	
	Cold	240 hours at -40℃	
	Salt mist	500 hours (chrome plating),240 hours (nickel plating) in a 5% concentration of salt mist	No corrosion.

Note: Total insertion loss of connection (plug, receptacle and master cord). (Multi-Mode: Used 1.5dB mode scrambler)

Materials / Finish

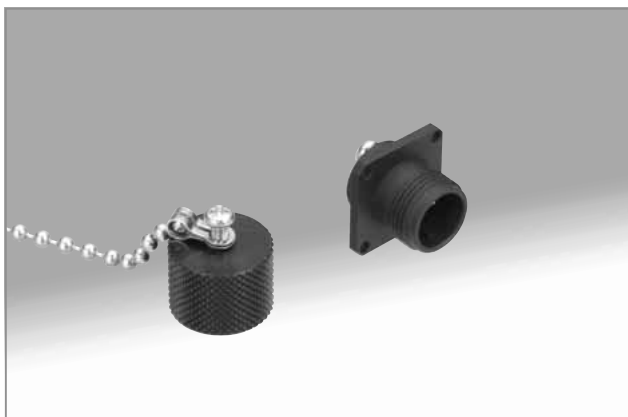
Part	Material	Finish/Color	Remarks
Plug and receptacle housing	Zinc alloy	Chrome plated (Black) or nickel plated	_____
	Brass	Chrome plated (Black) or nickel plated	_____
	Aluminum alloy	Alumite (Black)	_____
Retainer plate	Synthetic rubber	_____	UL94V-0
Hole cap	Aluminum alloy	Alumite (Black)	_____
Screws, ball chain	Stainless steel	_____	_____
Spring	Steel alloy	Zinc plated	_____
Split sleeve	Zirconia	_____	_____
Coupling wrench (Optional)	Plastic	Blue	_____

■ Plug housings



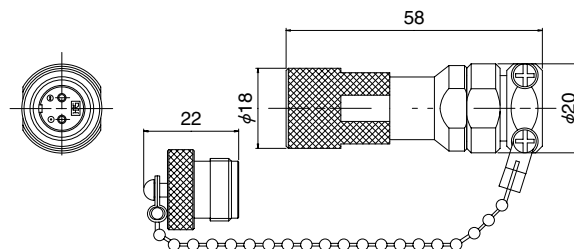
Part number	CL No.	Plating	RoHS
MF10S-WP7C01-0200(40)*	CL709-0203-2-40	Cr	YES
MF10S-WPN7C01-0200*	CL709-0544-3-00	Ni	

■ Receptacle housings

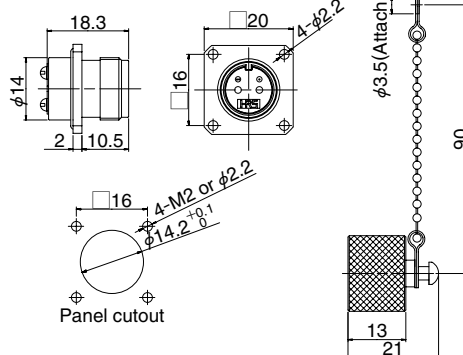


Part number	CL No.	Plating	Flange	RoHS
MF10S-WDRF01-0200(40)	CL709-0204-5-40	Cr	N	YES
MF10S-WDRFN01-0200	CL709-0548-4-00	Ni	N	
MF10S-WDRFNG01-0200	CL709-0549-7-00	Ni	W	
MF10S-WDRFG01-0200	CL709-0578-5-00	Cr	W	

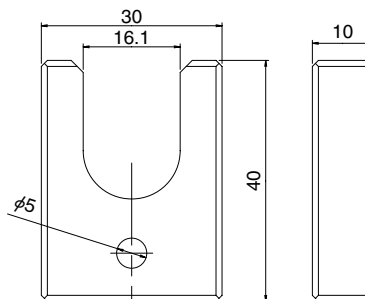
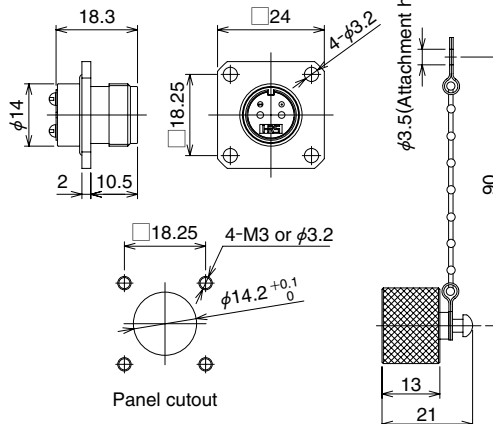
■ Coupling wrench (Optional)



Normal flange



Wide flange



Part number	CL No.
MF10-T1	CL709-0205-8-00

*
 Cr : Chrome plating (Black), Ni : Nickel plating
 N : Normal flange, W : Wide flange