

Monolithic crystal filter

MQF10.7-3000/14



Application

- 6 pol filter
- i.f.- filter
- use in mobile and stationary transceivers

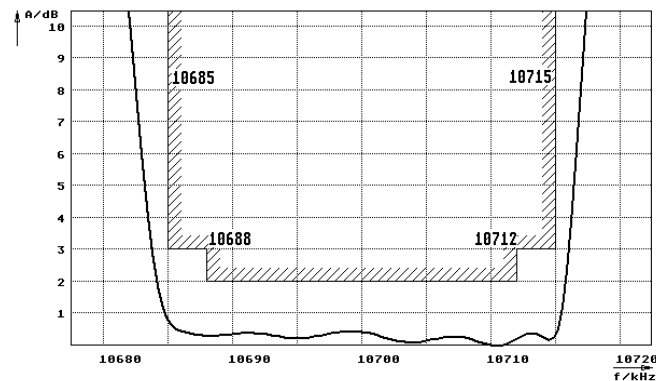
Limiting values		Unit	Value
Center frequency	f_0	MHz	10.7
Insertion loss		dB	≤ 3.0
Pass band at 3.0 dB		kHz	± 15.00
Ripple in pass band	$f_0 \pm 12.00$ kHz	dB	≤ 2.0
Stop band attenuation	$f_0 \pm 35$ kHz	dB	≥ 45
	$f_0 \pm 50$ kHz	dB	> 65
Alternate attenuation	$f_0 \pm 100...500$ kHz	dB	> 80 except spurious
Spurious responses		dB	> 10

Terminating impedance Z			
R1 C1		Ohm/pF	910 25
R2 C2		Ohm/pF	910 25

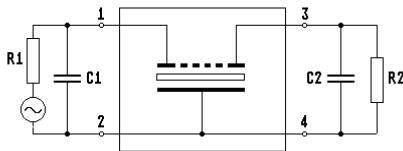
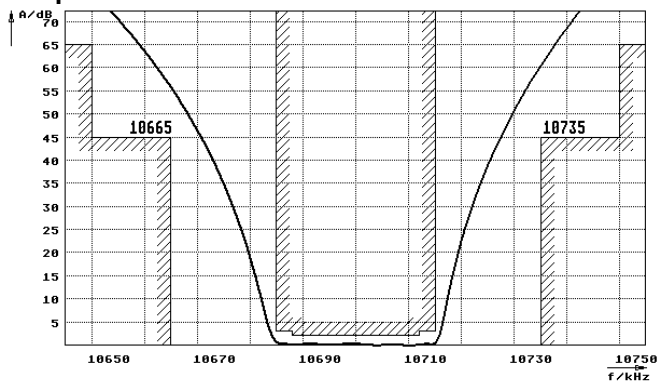
Operating temp. range		°C	-20... +70
-----------------------	--	----	------------

Characteristics MQF10.7-3000/14

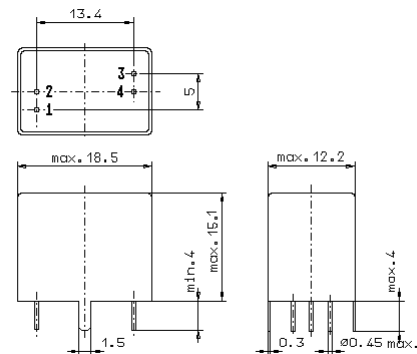
Pass band



Stop band



- Pin connections:
- 1 Input
 - 2 Ground-Input
 - 3 Output
 - 4 Ground-Output



GV5.1