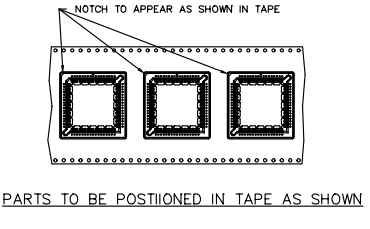
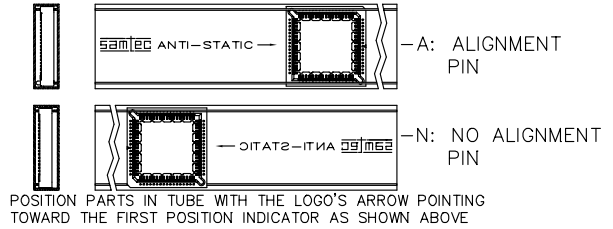


REV. X



DIMENSIONS ARE IN INCHES		UNLESS OTHERWISE NOTED	TOLERANCES ARE:	TITLE: PLCC ASM.	DWG NO: PLCC-0XX-X-X-XX
ONE PLACE DECIMALS ± .1 [3]	THREE PLACE DECIMALS ± .005 [13]	ANGLES	± 2'		
TWO PLACE DECIMALS ± .01 [3]	FOUR PLACE DECIMALS ± .0020 [51]				SHEET 1 OF 1

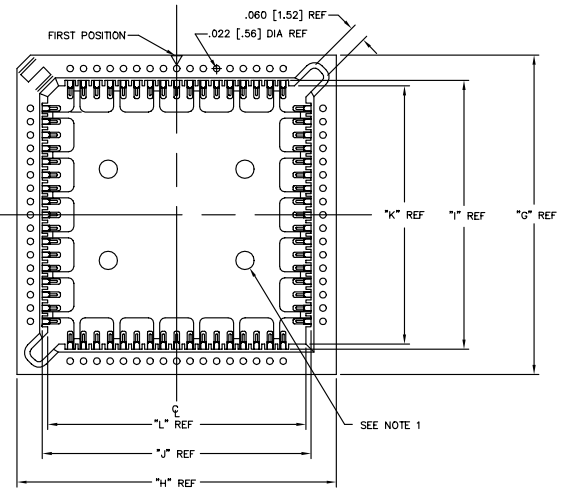
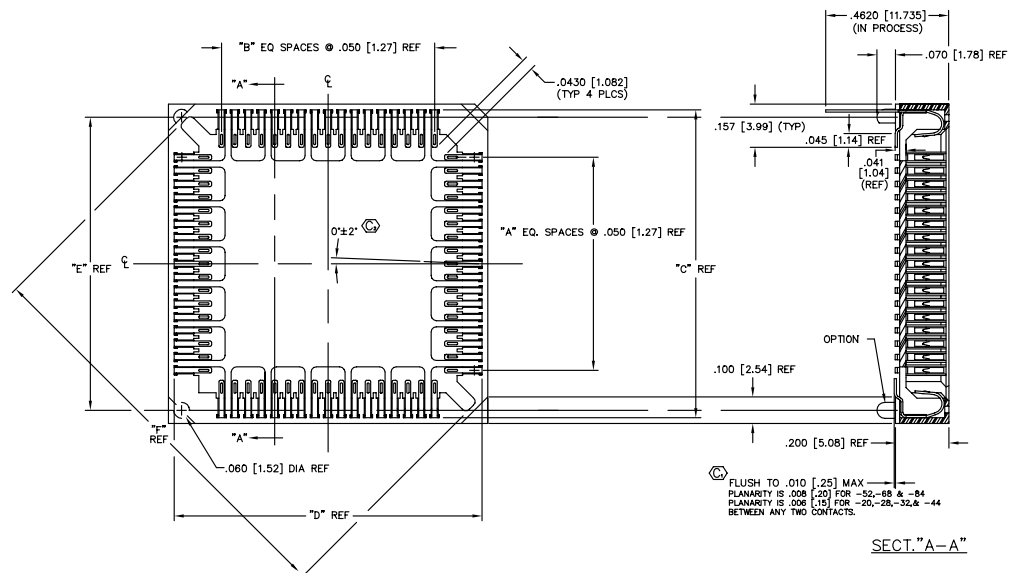
PLCC-0XX-X-X-XX

POSITION SPEC. (SEE TABLE 1 "XX")

PACKAGING OPTION
BLANK = PACKAGING TUBE (SEE PACKAGE TUBE SPEC.)
-TR = TAPE AND REEL (SEE TAPE & REEL SPECS.)

PLATING SPEC.
-T: TIN (SEE TABLE 1 "CONTACT")
-S: SELECTIVE (SEE TABLE 1 "CONTACT")
-L: LIGHT GOLD SELECTIVE (SEE TABLE 1 "CONTACT")
-F: FLASH GOLD SELECTIVE (SEE TABLE 1 "CONTACT")
-TL: TIN/LEAD (SEE TABLE 1 "CONTACT")

OPTION
-A: ALIGNMENT PIN (SPECIFY -A IN BODY SPEC. -X IN TABLE 1)
-N: NO ALIGNMENT PIN (SPECIFY -N IN BODY SPEC. -X IN TABLE 1)



Do not scale from this print

- NOTES:
- .0400 [1.016] DIA X .030 [.76] HIGH STANDOFFS ON -32 POSITION ONLY (TYP 4 PLCS)
 - Ⓞ REPRESENTS A CRITICAL DIM.

TABLE 1

"XX"	BODY SPEC.	TUBE SPEC.	PLUG SPEC.	"A"	"B"	"C"	"D"	"E"	"F"	"G"	"H"	"I"	"J"	"K"	"L"	CONTACT
20	PLCC-20-X	PT-1-24-06-51	TP-13	04	04	.555 [14.10]	.555 [14.10]	.500 [12.70]	.675 [17.15]	.600 [15.24]	.600 [15.24]	.410 [10.41]	.410 [10.41]	.370 [9.40]	.370 [9.40]	C-46-X
28	PLCC-28-X	PT-1-24-01-51	TP-13	06	06	.655 [16.64]	.655 [16.64]	.600 [15.24]	.818 [20.78]	.700 [17.78]	.700 [17.78]	.510 [12.95]	.510 [12.95]	.470 [11.94]	.470 [11.94]	C-46-X
32	PLCC-32-X	PT-1-24-01-51	TP-13	08	06	.755 [19.18]	.655 [16.64]	.700 [17.78]	.890 [22.61]	.800 [20.32]	.700 [17.78]	.610 [15.49]	.510 [12.95]	.570 [14.48]	.470 [11.94]	C-46-X
44	PLCC-44-X	PT-1-24-02-51	TP-13	10	10	.855 [21.72]	.855 [21.72]	.800 [20.32]	1.100 [27.94]	.900 [22.86]	.900 [22.86]	.710 [18.03]	.710 [18.03]	.670 [17.02]	.670 [17.02]	C-46-X
52	PLCC-52-X	PT-1-24-03-13	TP-13	12	12	.955 [24.26]	.955 [24.26]	.900 [22.86]	1.242 [31.55]	1.000 [27.94]	1.000 [27.94]	.810 [20.57]	.810 [20.57]	.770 [19.56]	.770 [19.56]	C-46-X
68	PLCC-68-X	PT-1-24-04-51	TP-13	16	16	1.155 [29.34]	1.155 [29.34]	1.100 [27.94]	1.525 [38.74]	1.200 [33.02]	1.200 [33.02]	1.010 [25.65]	1.010 [25.65]	.970 [24.64]	.970 [24.64]	C-46-X
84	PLCC-84-X	PT-1-24-05-51	TP-25	20	20	1.355 [34.42]	1.355 [34.42]	1.300 [33.02]	1.808 [45.92]	1.400 [35.56]	1.400 [35.56]	1.210 [30.73]	1.210 [30.73]	1.170 [29.72]	1.170 [29.72]	C-46-X

PROPRIETARY NOTE
THIS DOCUMENT CONTAINS INFORMATION OF A CONFIDENTIAL NATURE AND IS THE PROPERTY OF SAMTEC INC. IT IS TO BE KEPT CONFIDENTIAL AND NOT TO BE REPRODUCED OR DISCLOSED TO ANY OTHER PARTY WITHOUT THE WRITTEN CONSENT OF SAMTEC INC.

MATERIAL:
CELANESE, VECTRA E130
UL RATED 94V-0,
COLOR: BLACK
25% MAXIMUM REGRIND
CONTACT:
BeCu 172 SHM TEMPER

samtec

520 PARK EAST BLVD, NEW ALBANY, INDIANA 47150
PHONE (812) 944-0733 P.O. BOX 1147
CODE 5322

MADE BY: KOLB 5-18-89

PLCC-0XX-X-X-XX
SHEET 1 OF 1