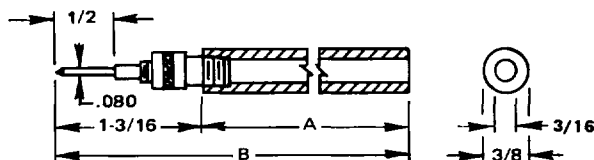


## TEST PRODS

PROD TIPS, CHUCKS AND COLLARS SUPPLIED  
BRASS NICKEL PLATED.

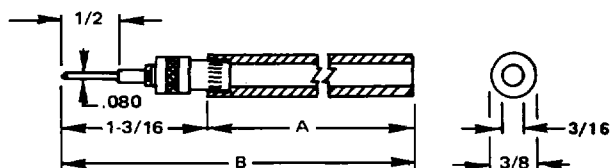
MOLDED THERMO-PLASTIC HANDLES



### THREADED-SOLDERLESS TYPE

Feed wire thru body, wrap, and secure with knurled collar for solderless connection.

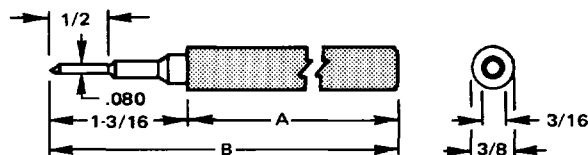
	A	B	COLOR
01-2601-4-0210	4"	5 1/4"	BLACK
01-2601-4-0212	4"	5 1/4"	RED
01-2601-5-0210	5 1/2"	6 1/4"	BLACK
01-2601-5-0212	5 1/2"	6 1/4"	RED



### FORCE FIT-SOLDERLESS TYPE

Same as above except prod tip is force fit into handle rather than threaded.

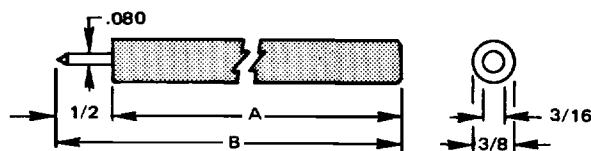
	A	B	COLOR
01-2602-4-0210	4"	5 1/4"	BLACK
01-2602-4-0212	4"	5 1/4"	RED
01-2602-5-0210	5 1/2"	6 1/4"	BLACK
01-2602-5-0212	5 1/2"	6 1/4"	RED



### THREADED-SOLDER TYPE

.161 Dia hole in prod enables use of heavy duty wire

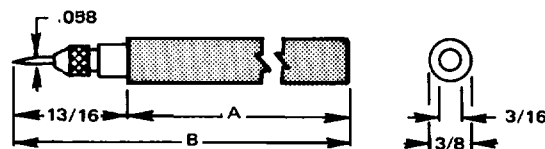
	A	B	COLOR
01-2604-4-0210	4"	5-3/16"	BLACK
01-2604-4-0212	4"	5-3/16"	RED
01-2604-5-0210	5 1/2"	6-11/16"	BLACK
01-2604-5-0212	5 1/2"	6-11/16"	RED



### THREADED-SOLDER TYPE

Prod assemblies flush with insulating handle

	A	B	COLOR
01-2605-4-0210	4"	4 1/2"	BLACK
01-2605-4-0212	4"	4 1/2"	RED
01-2605-5-0210	5 1/2"	6"	BLACK
01-2605-5-0212	5 1/2"	6"	RED

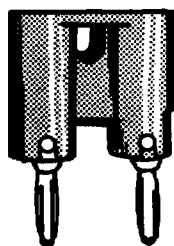


### THREADED-PIERCING TYPE

Removable chuck allows for easy needle replacement

	A	B	COLOR
01-2606-4-0210	4"	4-13/16"	BLACK
01-2606-4-0212	4"	4-13/16"	RED
01-2606-5-0210	5 1/2"	6-5/16"	BLACK
01-2606-5-0212	5 1/2"	6-5/16"	RED

## DUAL TEST ADAPTER

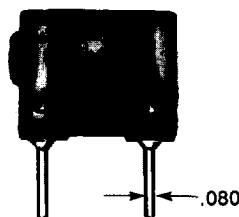


### DUAL BANANA PLUG

01-2552-1-0210 (BLK)  
01-2552-1-0212 (RED)

Molded polystyrene. Nickel plated brass. Mates with standard dual binding post with 3/4" centers. Polarity indicated on top and side. Can be stacked for multiple connections. Available in red and black.

## DUAL TEST ADAPTER



### BANANA JACKS TO DOUBLE PIN TIP PLUG WITH SETSCREWS

25-2576-1-0210 (BLK)

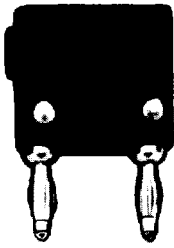
.750 CENTERS

Double banana jack. .166 dia., brass, nickel plated. Double pin tip plug. Brass, nickel plated. Setscrews secure cable and/or component leads. Available in ABS black.

RATING: 3000 WVDC, 5 Amps.

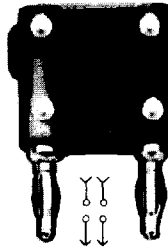


# DUAL TEST ADAPTERS



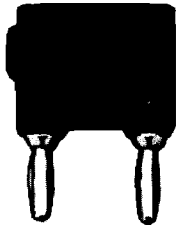
**STANDARD DOUBLE BANANA PLUGS WITH TURRET TERMINALS**  
**25-2575-1-0210 (BLK)**  
**25-2575-1-0212 (RED)**  
 .750 CENTERS

Stacking Banana Plugs/Jacks with Tin Plated Turret Terminals for noise-free connections. Available in Red and Black Polypropylene



**ISOLATION TYPE FOUR TERMINALS**  
**01-2571-1-0210 (BLK)**  
**01-2571-1-0212 (RED)**  
 .750 CENTERS

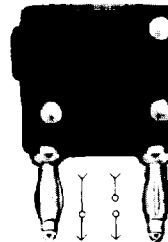
Standard Banana Plugs/Jack with Four Turret Terminals to Isolate Plugs and Jacks in both ground and hot circuits. Available in Red and Black ABS



**DUAL PHONE TIP TO DOUBLE BANANA PLUGS**  
**01-2574-1-0210**

.750 CENTERS

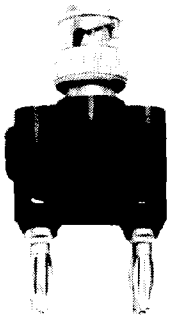
Rear of adapter houses .080 Tip Jacks. Cross holes accept Standard Banana Jacks. Available in Black only.



**ISOLATION TYPE THREE TERMINALS**  
**01-2572-1-0210 (BLK)**  
**01-2572-1-0212 (RED)**  
**01-2572-1-0216 (BLUE)**  
 .750 CENTERS

Same as above except only hot circuit is isolated. Available in Red, Black and Blue ABS

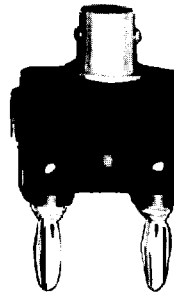
# BNC ADAPTERS



**BNC MALE TO DOUBLE BANANA PLUG**  
**25-2563-1-0210**

.750 CENTERS

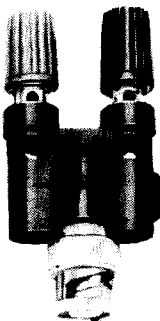
Allows BNC Female to be used with equipment equipped with Banana Jacks. Molded in Black ABS.



**BNC FEMALE TO DOUBLE BANANA PLUG**  
**25-2560-1-0210**

.750 CENTERS

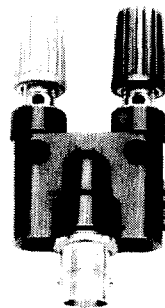
Allows BNC Male to be used with equipment equipped with Banana Jacks. Molded in Black ABS.



**BINDING POSTS TO BNC MALE**  
**25-2561-1-0200**

.750 CENTERS

Permits standard single or dual banana plugs to be used with equipment equipped with BNC Female. Binding Posts supplied with one Red and one Black head. Body is molded in Black ABS.



**BINDING POSTS TO BNC FEMALE**  
**25-2558-1-0200**

.750 CENTERS

Permits standard single or dual banana plugs to be used with equipment equipped with BNC Male. Binding Post supplied with one Red and one Black head. Body is molded in Black ABS.

# SAME DAY SHIPMENTS FROM STOCK