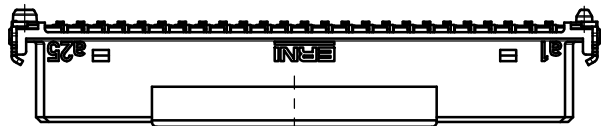
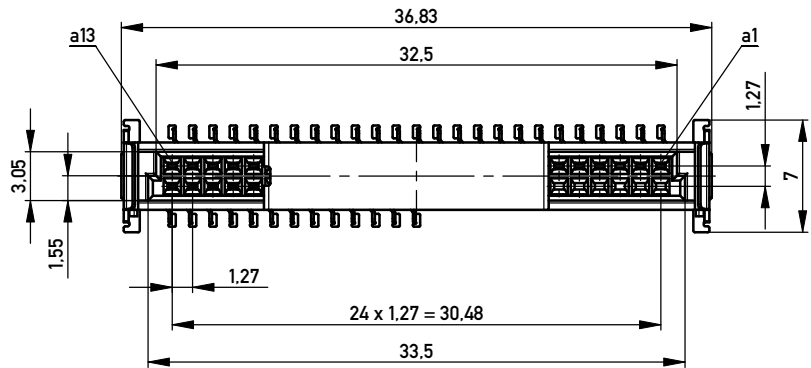
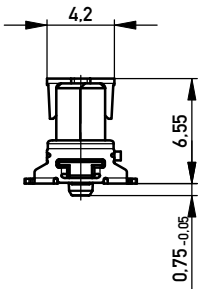
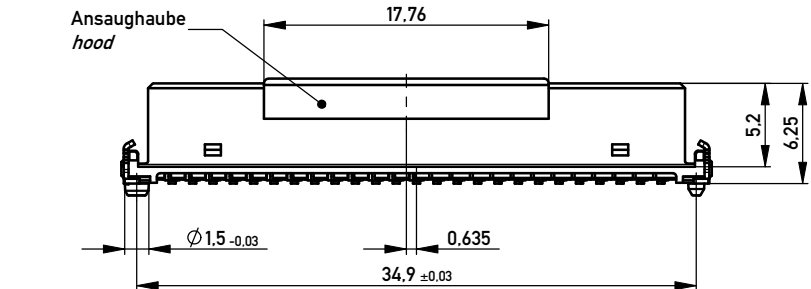
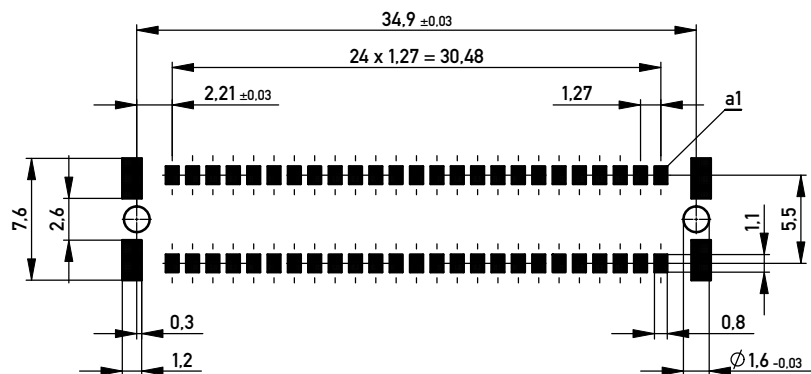


Verpackt in Gurtverpackung - *Tape on Reel Packaging*
 Verpackungseinheit: 280 Stück - *Packaging unit: 280 pcs*



Leiterplatten-Layout Vorschlag für SMT
PCB-Layout Proposal for SMT

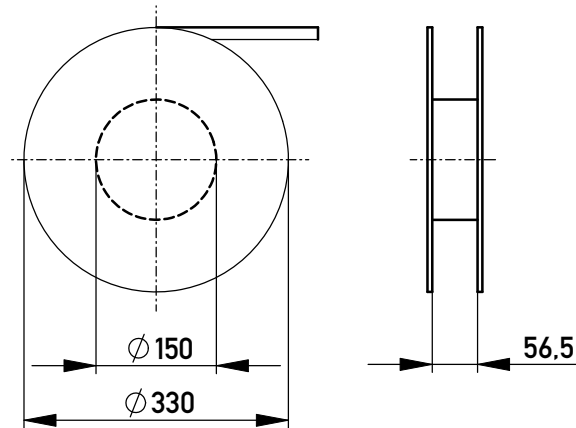


Anforderungsstufe 1
Performance Level 1

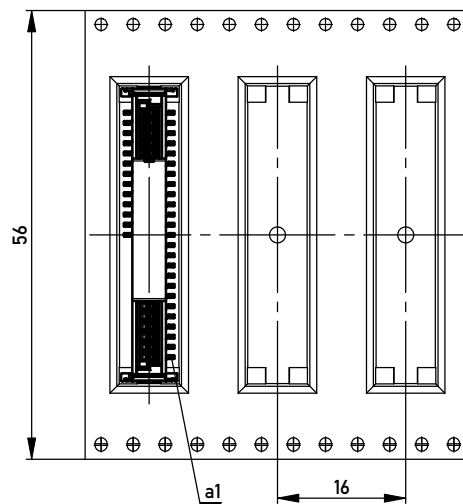
Kontaktbereich vergoldet
Mating Area gold plating

Anschlussbereich verzinkt 4-6 µm
Terminal Area 4-6 µm tin plating

Koplanarität der Anschlüsse ≤ 0,1 mm
Coplanarity Area of Termination ≤ 0,1 mm



Abspulrichtung - *Reel off Direction*



BA 7-13 - 8mm Bauhöhe
type7-13 - Low Profile

Information:		Tolerances	 All Dimensions in mm	Scale 3:1
All rights reserved. Only for Information. To ensure that this is the latest version of this drawing, please contact one of the ERNI companies before using.		Subject to modification without prior notice. Drawing will not be updated.		Designation Federl. SMC-B 50-SMD-BA7-13 <i>Female SMC-B 50-SMD-type7-13</i>
www.ERNI.com		154807		I A3
d	07.10.2010	Class		SMCB
Index	Date			

Copyright by ERNI GmbH.
 Proprietary notice pursuant to ISO 16016 to be observed.