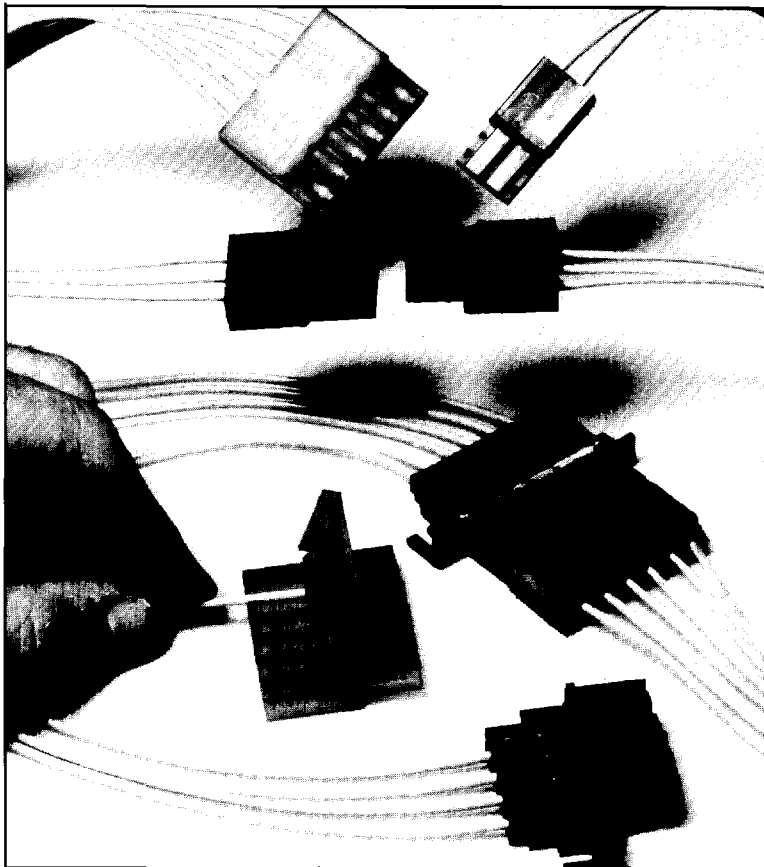


.250" (6.35mm) Power Connector



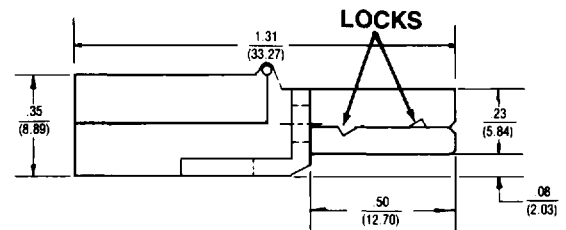
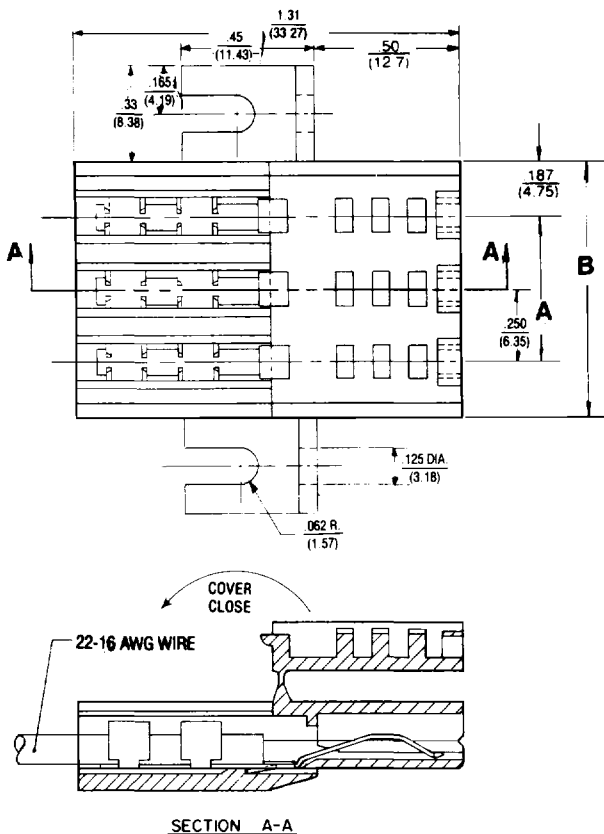
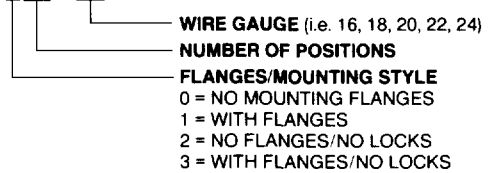
This unique general purpose wire to wire connector features insulation displacement termination in a hermaphroditic housing. This high current (12 AMP) connector, accepts a wire range of #16 thru #24 AWG, and can be adapted to most free-hanging cable applications. The snap lock cover provides positive strain relief and contact protection. Optional chassis mount flanges can be provided.

Maximum wire insulation diameter—.125
Wire sizes—Color coding

- #24 AWG—Black
- #22 AWG—Red
- #20 AWG—Brown
- #18 AWG—Orange
- #16 AWG—Yellow

For specifications, see page 11.

PART NUMBER CODING 2300-XXX-2XX



PART NO.	NO. OF POSITIONS	DIM. A	DIM. B
2300-001-2XX	1	.375 (9.53)	
.002	2	.250 (6.35)	.625 (15.88)
.003	3	.500 (12.70)	.875 (22.23)
.004	4	.750 (19.05)	1.125 (28.58)
.005	5	1.000 (25.40)	1.375 (34.93)
.006	6	1.250 (31.75)	1.625 (41.28)

