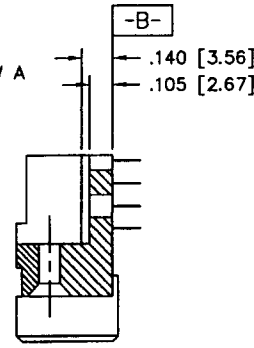
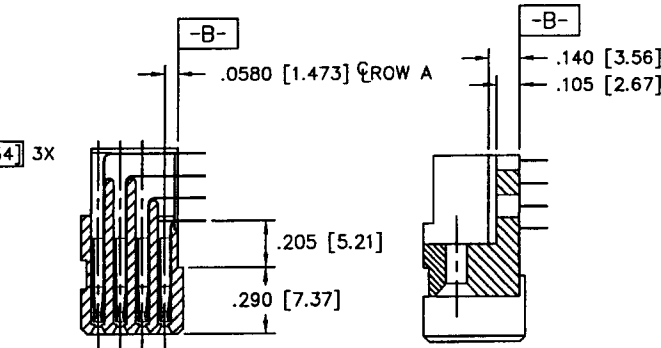
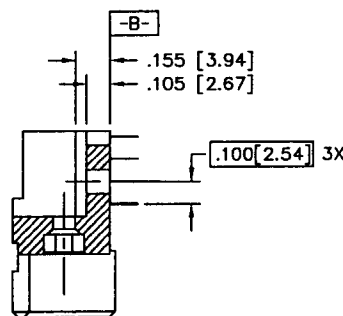


Tous droits strictement réservés. Reproduction ou communication à des tiers interdite sous quelque forme que ce soit sans autorisation écrite du propriétaire. Propriété de FCI. Droits de reproduction FCI.



All rights strictly reserved. Reproduction or issue to third parties in any form whatever is not permitted without written authority from the proprietor. Property of FCI. Copyright FCI.

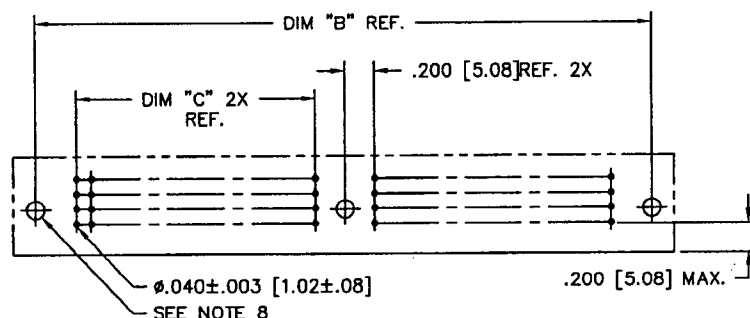
PRODUCT NUMBER	DIM.	LENGTH FORMULAS
SEE NOTE 1	DIM A	.100/2.54 X NO. OF COLUMNS + 1.05/26.7
	DIM B	.100/2.54 X NO. OF COLUMNS + .750/19.05
	DIM C	.100/2.54 X NO. OF COLUMNS DIVIDED BY 2 - .100/2.54



SECTION U-U
NO SPECIAL FEATURE

SECTION X-X

SECTION W-W
NO SPECIAL FEATURE



RECOMMENDED PCB LAYOUT
(ALL HOLES LOCATED ON .100 [2.54] GRID
UNLESS OTHERWISE SPECIFIED)

NOTES:

- PRODUCT NUMBERING CODE:
50748 - X YYY Z S
SPECIAL FEATURES (NOTE 8)
TAIL LENGTH (NOTE 5)
NO. OF POSITIONS (NOTE 2)
PLATING (NOTE 4)
BASE NUMBER
- THIS PRODUCT IS CONFIGURED IN SIZES OF 20 thru 122 COLUMNS IN INCREMENTS OF TWO.
i.e.: 20,22,24,26.....118,120,122.
- HOUSING MATERIAL: GLASS AND MINERAL FILLED HIGH TEMP. THERMOPLASTIC. FLAME RETARDANT PER UL94V-0. COLOR: BLACK.
CONTACT MATERIAL: BeCu
- PLATING CONTACT AREA OPTIONS:
1 = 30u"/.76u GOLD
3 = 50u"/1.27u GOLD
5 = 30u"/.76u GXT
ALL SOLDER TAILS TIN/LEAD
- TAIL LENGTH OPTIONS:
E = .125±.010 / 3.18±.25
F = .145±.010 / 3.68±.25
H = .180±.010 / 4.57±.25
- COMPANY NAME, PART NUMBER AND LOT CODE TO APPEAR ON THIS SURFACE PER BUS-12-108.
- FOR DOCUMENTATION MENU, SEE SPEC. BUS-01-057.
- SPECIAL FEATURES: (SEE SHEET 3)
- IF CODE IS OMITTED FROM PRODUCT NO.; CONNECTOR IS PROVIDED AS SHOWN, NO SPECIAL FEATURES ARE SELECTED. FOR P.C.B. ATTACHMENT IN A .120 [3.05] MOUNTING HOLE.
"A" = IF SPECIFIED, PRE-INSTALLED CLAW FOR P.C.B. ATTACHMENT IN A Ø.100 MOUNTING HOLE. (AVAILABLE IN "E" TAIL LENGTH ONLY).
"B" = IF SPECIFIED, PRE-INSTALLED CLAW FOR P.C.B. ATTACHMENT IN A Ø.120 MOUNTING HOLE.
"C" = IF SPECIFIED, MOLDED GUIDE PINS w/CLAW FOR P.C.B. ATTACHMENT IN A Ø.120 MOUNTING HOLE.
- CLAW DIMENSION DETERMINED BY P.C.B. HOLE DIAMETER.

mat'l. code				tolerances unless otherwise specified		CUSTOMER COPY		FCI Electronics	
ltr	ecr no	dr	date	linear	.XX±.01/.X±.3	projection		title	www.fciconnect.com
G					.XXX±.005/.XX±.13			4 ROW R/A RECEPTACLE	
				angles	.XXX±.0020/.XXX±.051			SOLDER TAIL, 1 GUIDE PIN	
				dr	G. PETERS 10/13/93	INCH/MM		product family	HPC
				engr	S. CLARK 10/13/93			code	213
				chr	S. CLARK 10/18/93	scale		size dwg no	
				appd	S. CLARK 10/18/93	1:1		50748	sheet 2 of
sheet index	revision sheet								

cage code
22526

ACAD

PDM: Rev:G

STATUS: Released

Printed: Feb 10, 2006

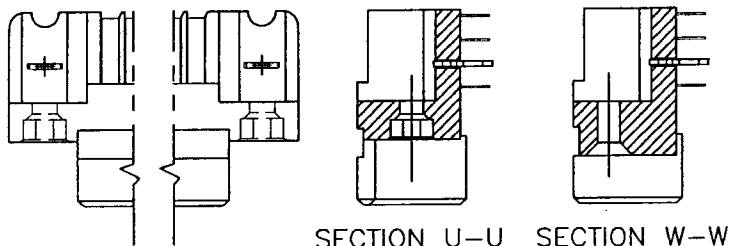
Tous droits strictement réservés. Reproduction ou communication à des tiers interdite sous quelque forme que ce soit sans autorisation écrite du propriétaire. Propriété de c FCI. Droits de reproduction FCI.

All rights strictly reserved. Reproduction or issue to third parties in any form whatever is not permitted without written authority from the proprietor. Property of FCI. Copyright FCI.



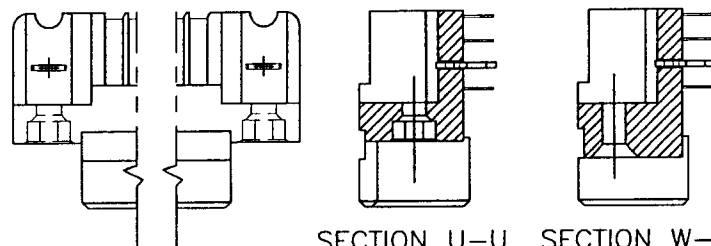
PRODUCT NUMBER
SEE NOTE 1

SPECIAL FEATURE OPTION A



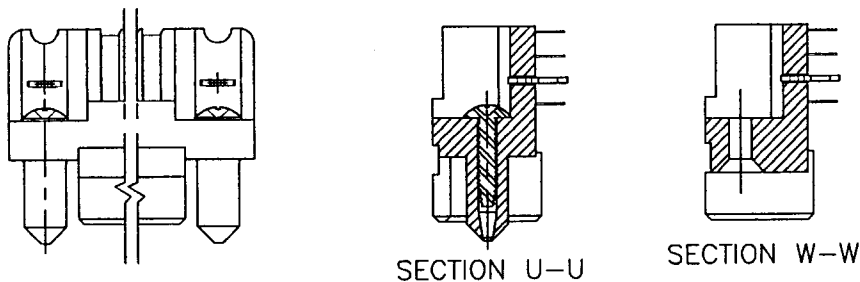
SECTION U-U SECTION W-W

SPECIAL FEATURE OPTION B

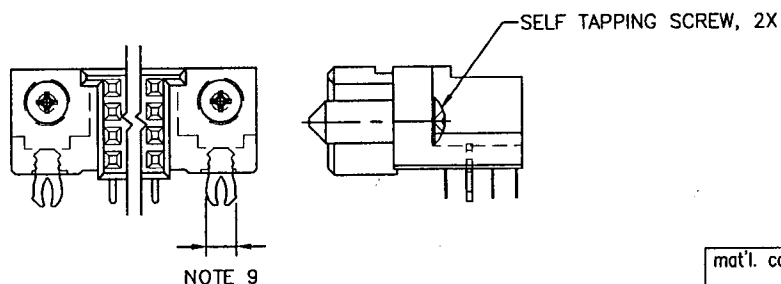


SECTION U-U SECTION W-W

SPECIAL FEATURE OPTION C



SECTION U-U SECTION W-W



NOTE 9

mat'l. code				tolerances unless otherwise specified		CUSTOMER COPY	FCI Electronics	
ltr	ecr no	dr	date				www.fciconnect.com	
G				linear	.XX±.01/.X±.3	projection	title 4 ROW R/A RECEPTACLE SOLDER TAIL, 1 GUIDE PIN	
					.XXX±.005/.XX±.13			
				angles	.XXX±.0020/.XX±.051		product family HPC	
					0° ±2°		code 213	
				dr	C.DAILY 6/28/00	INCH/MM	size dwg no	
				enr	M. GRAY 6/28/00		A 50748	
				chr	M. GRAY 6/28/00	scale	sheet 3 of	
				appd	M. GRAY 6/28/00	N.T.S.		
sheet index	revision sheet							

cage code
22526

ACAD

PDM: Rev:G

STATUS:Released

Printed: Feb 10, 2006