

.325" PCB Barrier Terminal Strip (closed side)

Description

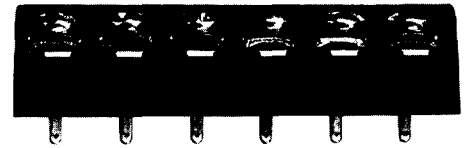
The series 70R PCB terminal strip brings the benefits of tri-barrier construction to one of the most widely used terminal block products today. The .325" terminal pitch and the #6-32 screw offers the user excellent density and durability characteristics.

Unlike other tri-barrier designs, the 70R has the same footprint as our standard series 70 PCB terminal strip, allowing the user to offer the benefits of the tri-barrier construction without redesigning their PCB.

Made in the USA, all Beau terminal blocks embody the highest quality standards in the industry-using the finest materials and world class manufacturing processes. They meet or exceed all applicable industry standards.

Features

- **Strength and density**, the .325" pitch series 70R is our smallest product to use the #6-32 screw.
- **Robust and durable**, screw terminals are ultrasonically welded into the thermoplastic insulator, eliminating terminal twisting and associated solder joint failure.
- **Wide array of options**. Our series 70R product options can fulfill virtually any application demand. Only Beau gives you a captivated screw rated to a minimum 6 in-lbs. of back out torque.
- **Prevents shorting**. The tri-barrier construction surrounds the connection on three sides providing maximum circuit isolation.



PRODUCT RATINGS

#6-32 PAN HEAD SCREW

UL	Class B	15 Amps @ 300 V	14 AWG
	Class C	15 Amps @ 150 V	14 AWG
CSA	Class B	15 Amps @ 150 V	14 AWG
	Class D	10 Amps @ 300 V	14 AWG

#6-32 WIRE CLAMP SCREW

UL	Class B	20 Amps @ 300 V	12 AWG
	Class C	20 Amps @ 150 V	12 AWG
CSA	Class B	15 Amps @ 150 V	14 AWG
	Class D	10 Amps @ 300 V	14 AWG

SAFETY AGENCIES

UL	File No. E48521
	Guide No. XCFR2
CSA	File No. 025562

TECHNICAL SPECIFICATIONS

ELECTRICAL

DWV	8500 VDC
IR	>5000 Megohms

MECHANICAL

Tightening torque	12 in-lbs.
Maximum torque	13 in-lbs.
Wire strip length	5/16"
Wire range	12 to 22 AWG

ENVIRONMENTAL

Continuous Use Temp	
RTI electrical	110°C
RTI mechanical w/o impact	110°C

MATERIALS

Insulator	Thermoplastic, UL94V-0, black
Terminal	Brass, tin-lead plate
Screws	#6-32, phillips/slotted, steel, zinc chromate plate

OPTIONS

-45	Slotted screw
-47	Screws up, wire ready
-49	Brass, phillips/slotted screw
-50	Clamp washer, phillips/slotted screw
-58	No screws, barrier only
-59	Screws supplied unassembled
-C	No mounting ends
-P	.040" standoff pads
-T	Captive screws
-V	130°C insulator

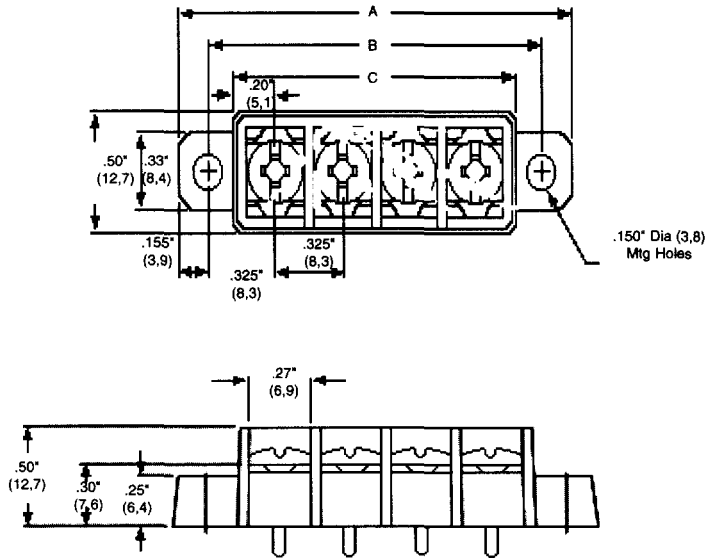
HOW TO ORDER

7	0	R	X	X	X	X
SERIES		TERMINAL	NO. OF		OPTIONS	
		STYLE	POLES			
		1 5	2 to 12		(Dash #s above	
		7 8			and	
					opposite page)	

*Consult factory for combinations of screw options.

Molex Industrial Division
 New England Operations
 Gilford, NH 03246-6600
 Phone (603) 524-5101
 Fax (603) 524-1627
 Internet www.beuint.com

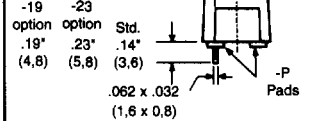
TERMINAL STYLES



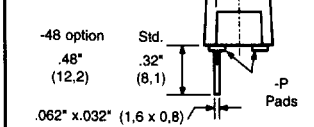
STYLE 1
No PC
Terminal



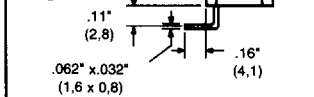
STYLE 5
PC



STYLE 7
Wire Wrap



STYLE 8
Right
Angle PC



No. of Circuits	A		B		C	
	in.	mm	in.	mm	in.	mm
2	1.29	32,8	.98	24,9	.73	18,5
3	1.61	40,9	1.30	33,0	1.06	26,9
4	1.94	49,3	1.63	41,4	1.38	35,1
5	2.26	57,4	1.95	49,5	1.70	43,2
6	2.59	65,8	2.28	57,9	2.03	51,2
7	2.91	73,9	2.60	66,0	2.35	59,7
8	3.24	82,3	2.93	74,4	2.68	68,1
9	3.56	90,4	3.25	82,6	3.00	76,2
10	3.89	98,8	3.58	90,9	3.33	84,6
11	4.21	107	3.90	99,1	3.65	92,7
12	4.54	115	4.23	107	3.98	101