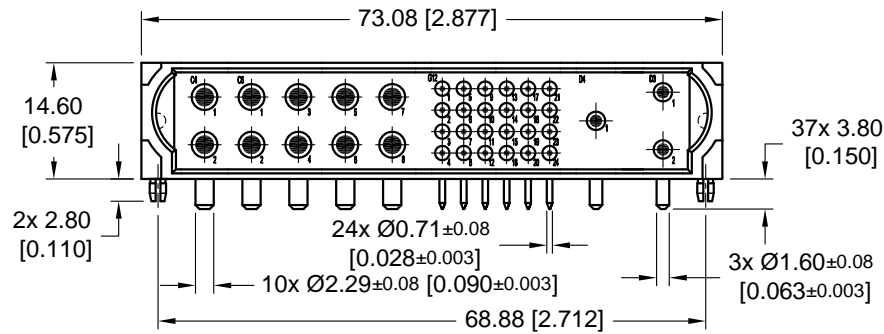
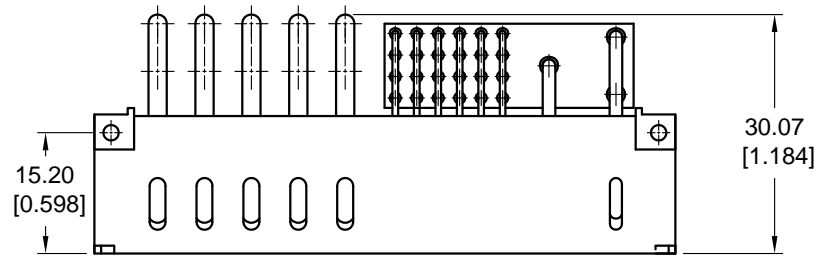
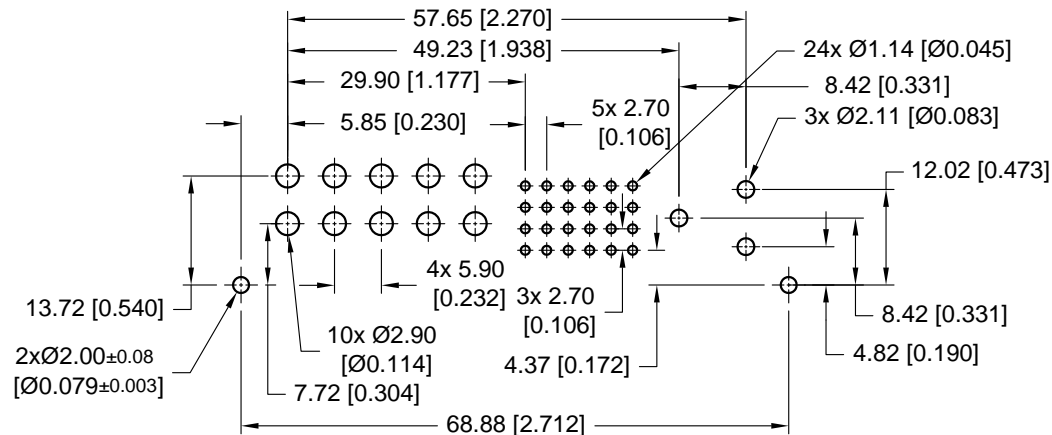


POSITRONIC ASIA PTE. LTD. BELIEVES THE DATA ON THE DRAWING TO BE RELIABLE. SINCE THE TECHNICAL INFORMATION IS GIVEN FREE OF CHARGE, THE USER EMPLOYS SUCH INFORMATION AT HIS OWN DISCRETION AND RISK. POSITRONIC ASIA PTE. LTD. ASSUMES NO RESPONSIBILITY FOR RESULTS OBTAINED OR DAMAGES INCURRED FROM USE OF SUCH INFORMATION IN WHOLE OR IN PART.

DATE	REV	REVISION RECORD	DRN	CKD	APP
02 DEC 08	NC	PA ECO 08257	LP	EH	NK



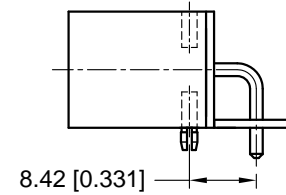
CONTACT HOLES PATTERN



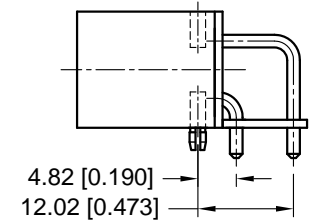
NOTES:

- MATERIALS AND FINISHES  
 INSULATOR: GLASS-FILLED POLYESTER, UL 94V-0. COLOR: BLUE.  
 CONTACTS: PRECISION MACHINED COPPER ALLOY WITH GOLD OVER NICKEL PLATE.  
 PUSH ON FASTENERS : BRASS WITH TIN PLATE.

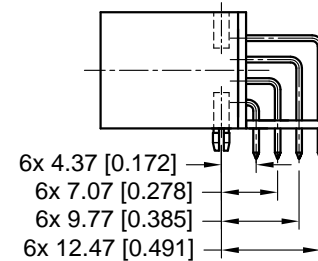
SIZE 16 CONTACTS



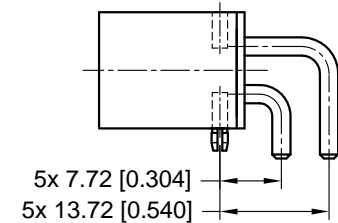
SIZE 16 CONTACTS



SIZE 22 CONTACTS



SIZE 12 CONTACTS



DRAWING NO.	PART NUMBER	REMARKS
ASK21809-1	SP2EGN2TN2AN3B4M0N9	-
ASK21809-2	SP2EGN2TN2AN3B4M0N9/AA	RoHS COMPLIANT PER RoHS DIRECTIV 2002/95/EC OF 27 J/ 2003



**POSITRONIC ASIA PTE. LTD**  
 3014A UBI ROAD 1, #07-01. SINGAPORE 408703.  
 Tel: (65) 6842-1419 / Fax: (65) 6842-1421 / Email: singapore@connectpositronic.cc

SERIES	SCALE	DRAWN	CHECKED	APPROV
SP	NTS	LP	EH	NK
<b>GENERAL TOL.</b> LINEAR : ±0.38 [0.015] ANGULAR : ±5°				
<b>TITLE</b> SP2EGN2TN2AN3B4M0N9 SP2EGN2TN2AN3B4M0N9/AA				
<b>UNLESS OTHERWISE SPECIFIED, ALL DIMENSIONS ARE IN MILLIMETERS [INCHES]</b>		<b>DATE</b> 02 DEC 08	<b>DRAWING NUMBER</b> ASK21809-*	<b>REV.</b> SHEET 1 OF 1