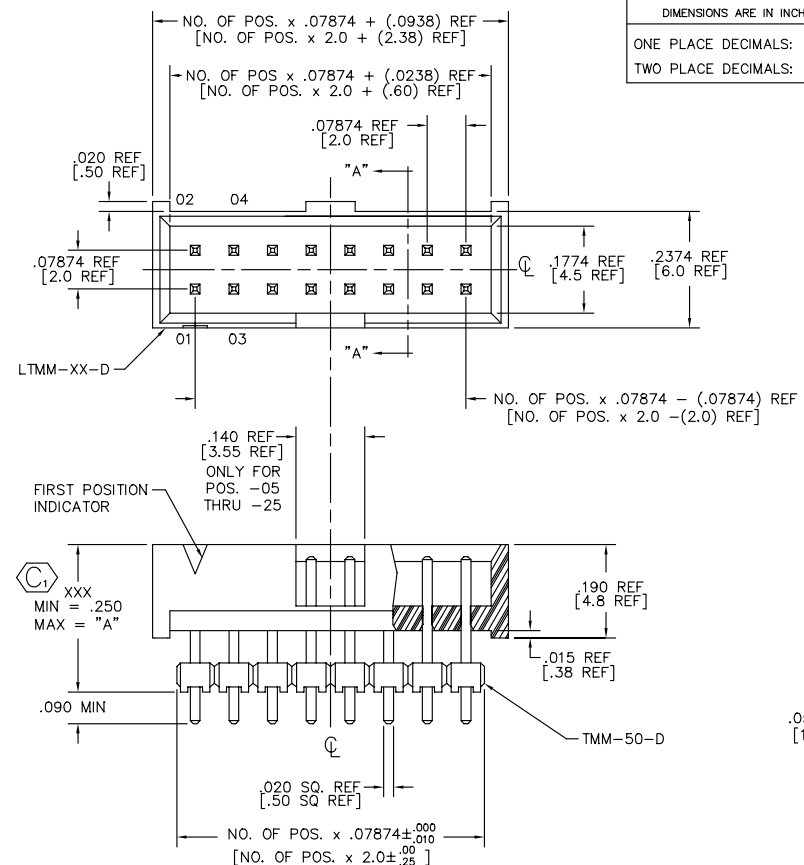


UNLESS OTHERWISE NOTED		TOLERANCES ARE:	TITLE:	DWG NO:
ONE PLACE DECIMALS: ± .1	THREE PLACE DECIMALS: ± .005	ANGLES ± 1°	ZL TMM ASSEMBLY	ZLTMM-1XX-XX-XX-D-XXX-XX
TWO PLACE DECIMALS: ± .01	FOUR PLACE DECIMALS: ± .0020			SHEET 1 OF 1



**ZLTMM-1XX-XX-XX-D-XXX-XX**

**NO. OF POSITIONS**  
03, 04, 05, 06, 08, 10, 12, 13, 15, 17, 20, 22, 25

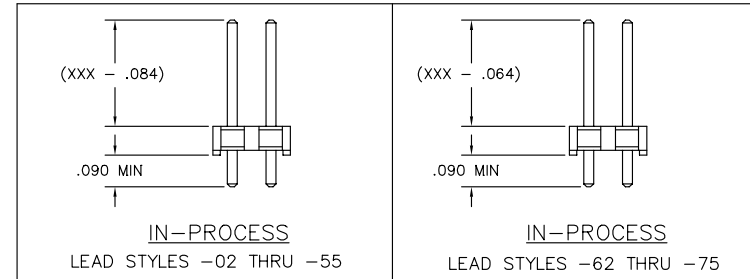
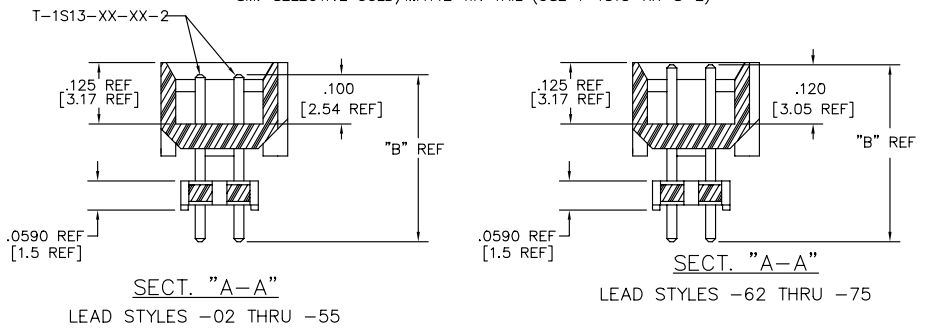
**TERMINAL STYLE**  
LEAD STYLES -02 THRU -55:  
.100 POST HEIGHT, LEAD STYLES  
-62 THRU -75: .120 POST HEIGHT  
(SEE TABLE 1)

**POLARIZED OPTION**  
XX = PIN NO. TO BE OMITTED

**BODY HEIGHT**  
-XXX  
MIN = .250  
MAX = "A" (SEE TABLE 1)

**ROW SPECIFICATION**  
-D: DOUBLE

**PLATING SPECIFICATIONS**  
-G: GOLD (USE T-1S13-XX-G-2)  
-T: TIN (USE T-1S13-XX-T-2)  
-S: SELECTIVE GOLD (USE T-1S13-XX-S-2)  
-H: HEAVY GOLD (USE T-1S13-XX-H-2)  
-TM: MATTE TIN (USE T-1S13-XX-T-2)  
-LM: LIGHT SELECTIVE GOLD/MATTE TIN TAIL (USE T-1S13-XX-L-2)  
-FM: FLASH SELECTIVE GOLD/MATTE TIN TAIL (USE T-1S13-XX-F-2)  
-SM: SELECTIVE GOLD/MATTE TIN TAIL (USE T-1S13-XX-S-2)



- NOTES:
1. MAX PIN ROTATION IN BODY TO BE 2°.
  2. PUSHOUT FORCE TO BE 1 lb. MIN.
  3. (C) REPRESENTS CRITICAL DIMS. FOR STATISTICAL PROCESS CONTROL.
  4. ALL DIMS APPEARING IN [ ] ARE IN MILLIMETERS.

TABLE 1

LEAD STYLE	TERMINAL	"A"	"B"	LEAD STYLE	TERMINAL	"A"	"B"
-02	T-1S13-02-XX-2	.312 [7.92]	.377 [9.58]	-62	T-1S13-05-XX-2	.312 [7.92]	.397 [10.08]
-03	T-1S13-03-XX-2	.470 [11.94]	.535 [13.59]	-63	T-1S13-06-XX-2	.470 [11.94]	.555 [14.10]
-05	T-1S13-05-XX-2	.332 [8.43]	.397 [10.08]	-65	T-1S13-19-XX-2	.328 [8.33]	.413 [10.49]
-06	T-1S13-06-XX-2	.490 [12.45]	.555 [14.1]	-66	T-1S13-09-XX-2	.509 [12.93]	.594 [15.09]
-55	T-1S13-20-XX-2	.258 [6.55]	.323 [8.2]	-69	T-1S13-14-XX-2	.529 [13.44]	.614 [15.60]
-09	T-1S13-09-XX-2	.529 [13.4]	.594 [15.1]	-70	T-1S13-17-XX-2	.608 [15.44]	.693 [17.60]
-10	T-1S13-10-XX-2	.608 [15.4]	.673 [17.1]	-71	T-1S13-12-XX-2	.745 [18.92]	.830 [21.08]
-11	T-1S13-11-XX-2	.686 [17.4]	.751 [19.1]	-72	T-1S13-18-XX-2	.766 [19.45]	.851 [21.62]
-12	T-1S13-12-XX-2	.765 [19.4]	.830 [21.1]	-73	T-1S13-08-XX-2	.391 [9.93]	.476 [12.09]
-13	T-1S13-13-XX-2	.391 [9.9]	.456 [11.6]	-74	T-1S13-10-XX-2	.588 [14.93]	.673 [17.09]
-14	T-1S13-14-XX-2	.549 [13.9]	.614 [15.6]	-75	T-1S13-02-XX-2	.292 [7.42]	.377 [9.58]

PLOT SCALE: 1=.

EXISPROD\ASSEMBLY\2MM  
ZLTMMASM

**samtec**

520 PARK EAST BLVD. NEW ALBANY, INDIANA 47150  
PHONE (812) 944-6733 P.O. BOX 1147  
CODE 55322

MADE BY: BRYANT 7-9-92  
CHECKED BY: ECKERT

ENGINEER APPROVAL  
DEM

ZLTMM-1XX-XX-XX-D-XXX-XX  
SHEET 1 OF 1

**PROPRIETARY NOTE**  
THIS DOCUMENT CONTAINS INFORMATION CONFIDENTIAL AND PROPRIETARY TO SAMTEC INC. AND SHALL NOT BE REPRODUCED OR TRANSMITTED TO OTHER DOCUMENTS OR DISCLOSED TO OTHERS OR USED FOR ANY PURPOSE OTHER THAN THAT FOR WHICH IT WAS OBTAINED WITHOUT THE EXPRESSED WRITTEN CONSENT OF SAMTEC INC.