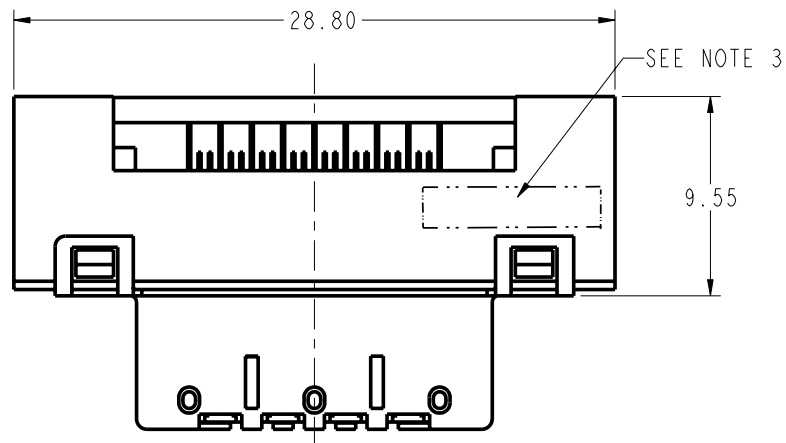
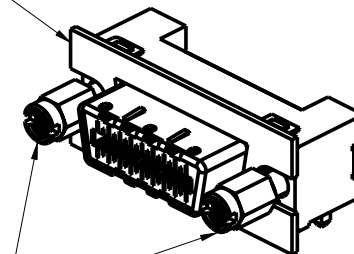




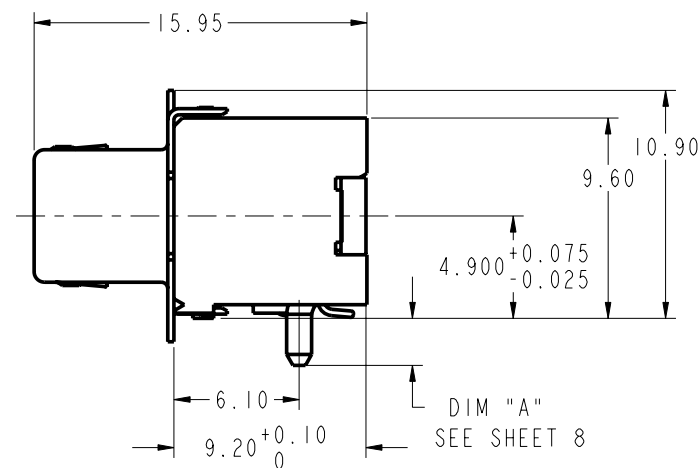
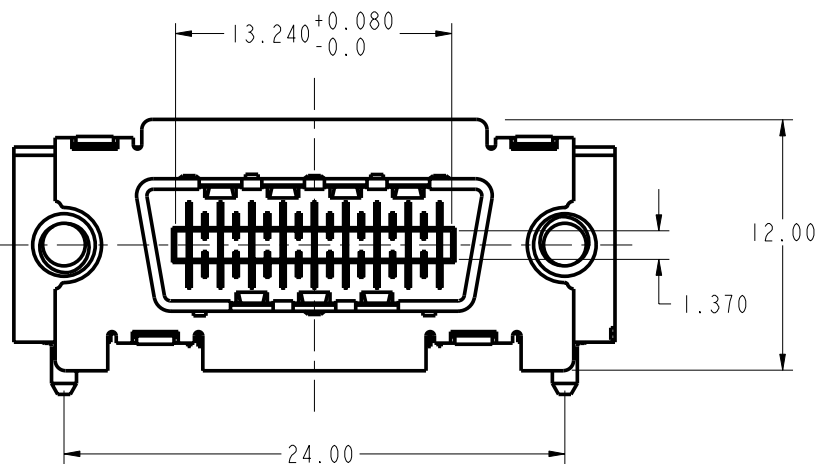
Copyright FCI.



AVAILABLE WITH OR WITHOUT
EMI GASKET.
FOAM GASKET P/N 10019396-001 CAN
BE PURCHASED SEPARATELY.
METAL GASKET P/N 10043517 MUST BE
PURCHASED ALREADY ASSEMBLED.



P/N 10009634-001, 2X
THREADED STANDOFFS SOLD
SEPARATELY



rev	ecn no	dr	date
H	05-0141	HVN	2005/08/12
C	V03-1232	DAI	2003/12/05
D	V04-0460	DAI	2004/06/08
E	V04-0830	TAB	2004/08/18
F	V04-1005	DAI	2004/10/06
G	V05-0063	TAB	2005/02/14
J	06-0123	HVN	2006/07/26

www.fciconnect.com			surface 3.2 ASME Y14.5	tolerance std ASME Y14.5	projection ASME Y14.5	MM
			TOLERANCES UNLESS OTHERWISE SPECIFIED:			
Dr	G.PETERS	2003/08/13	ANGULAR 0° ±2°	0.X	±.30	size A4
Eng	D.BRANN	2003/08/13		0.XX	±.10	Scale 3:1
Chr	HIRAN V N	2006/07/26		0.XXX	±.050	ECN 106-0123
Appr	HIRAN V N	2006/07/26	Product familyEyeMax (tm)			Spec ref -
FCI			4X R/A THUMBSCREW RECPT ASSEMBLY, w/ 7 KEY SLOTS			Rev. J
catalog no			10009629			sheet 1 of 9
			CUSTOMER			

REV F - 2006-04-17

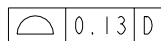
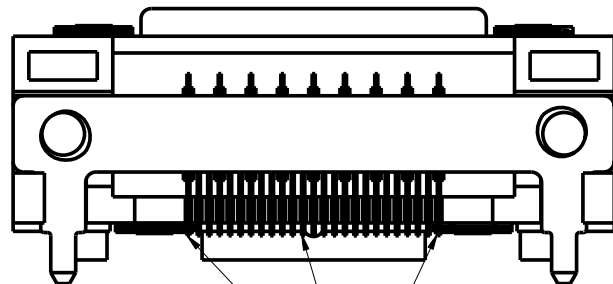
PDM: Rev:J

STATUS:Released

Printed: Aug. 23, 2006

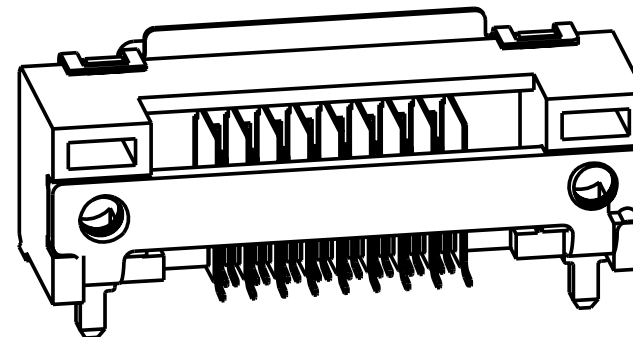
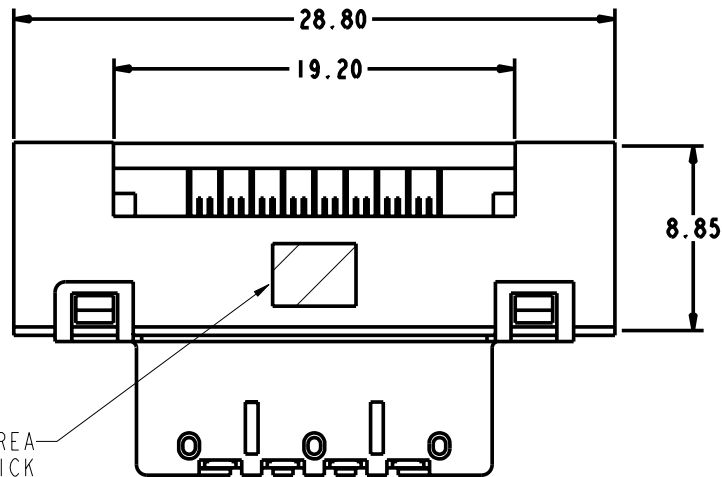


Copyright FCI.



COPLANARITY MEASUREMENT TO BE TAKEN
AT THE BOTTOM MOST POINT ON CONTACT TAILS
COPLANARITY ZONE IS BELOW DATUM D.

CROSS HATCH AREA
IS FOR VACUUM PICK
& PLACE REF. ONLY



www.fciconnect.com			surface 3.2 ASME Y14.5	tolerance std ASME Y14.5	projection ASME Y14.5	MM
			TOLERANCES UNLESS OTHERWISE SPECIFIED:			
Dr	G.PETERS	2003/08/13	ANGULAR	0.X	±.30	size A4
Eng	D.BRANN	2003/08/13	LINEAR	0.XX	±.10	Scale 3:1
Chr	HIRAN V N	2006/07/26	0° ±2°	0.XXX	±.050	ECN 106-0123
Appr	HIRAN V N	2006/07/26	Product familyEyeMax (tm)			Spec ref -
FCI			title 4X R/A THUMSCREW RECPT			Rev. J
			ASSEMBLY, w/ 7 KEY SLOTS			
catalog no			dwg no 10009629			sheet 2 of 9
			CUSTOMER			

REV F - 2006-04-17

PDM: Rev:J

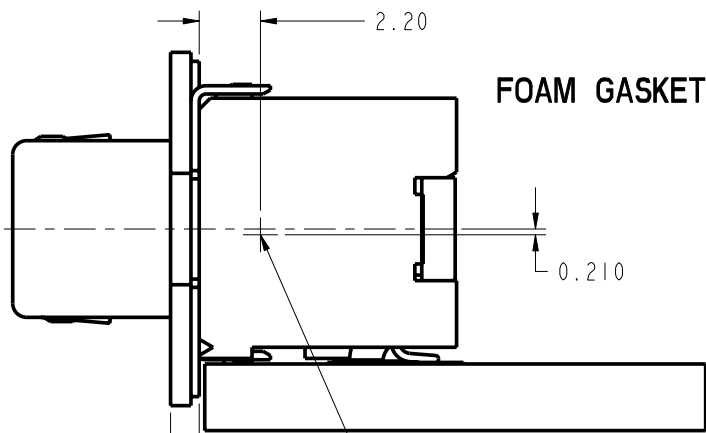
STATUS:Released

Printed: Aug. 23, 2006



Copyright FCI.

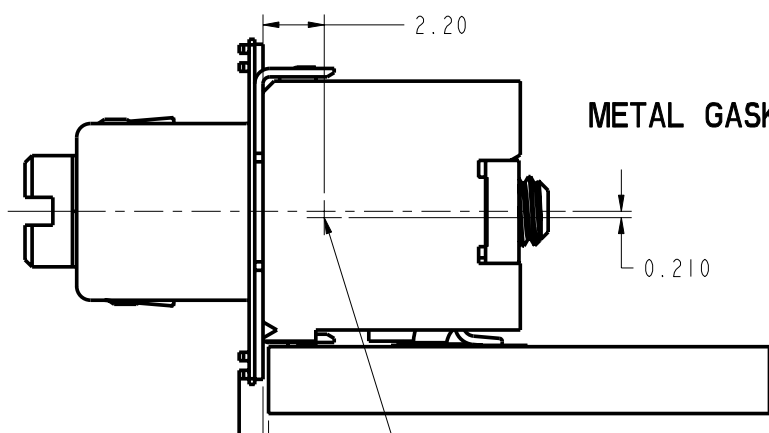
REV F - 2006-04-17



FOAM GASKET

10009629 CENTER OF GRAVITY
SEE NOTE 5

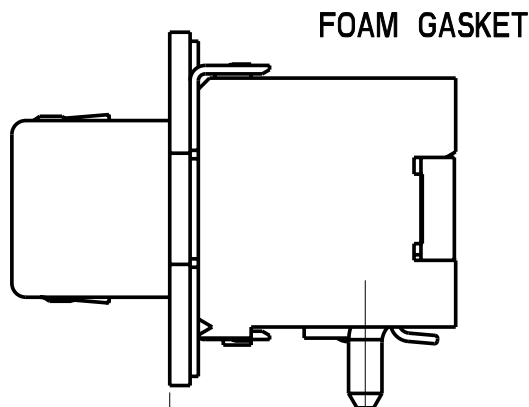
0.20 REF. DISTANCE FROM PCB TO REAR OF "D" SHELL
1.00 REF. DISTANCE FROM PCB TO INSIDE SURFACE
OF BULKHEAD OR PCI BRACKET
BULKHEAD/BRACKET NOT SHOWN



METAL GASKET

10009629 CENTER OF GRAVITY
SEE NOTE 5

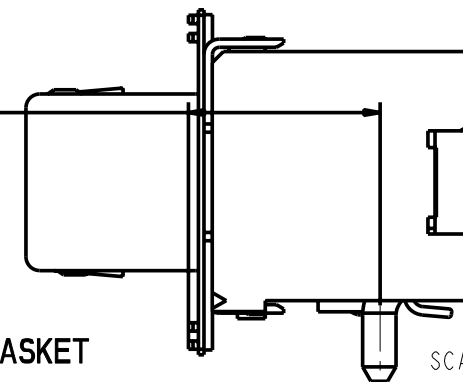
0.20 REF. DISTANCE FROM PCB TO REAR OF "D" SHELL
1.00 REF. DISTANCE FROM PCB TO INSIDE SURFACE
OF BULKHEAD OR PCI BRACKET
BULKHEAD/BRACKET NOT SHOWN



FOAM GASKET

6.75 REF.
DISTANCE FROM CENTER OF GROUND PEG
TO INSIDE SURFACE OF BULKHEAD or PCI BRACKET
GASKET COMPRESSED.

BULKHEAD/BRACKET NOT SHOWN



METAL GASKET

SCALE 4:1

www.fciconnect.com			surface 3.2 ASME Y14.5	tolerance std ASME Y14.5	projection ASME Y14.5	MM
			TOLERANCES UNLESS OTHERWISE SPECIFIED:			
Dr	G.PETERS	2003/08/13	ANGULAR	0.X	±.3	size A4
Eng	D.BRANN	2003/08/13	LINEAR	0.XX	±.10	Scale 1:1
Chr	HIRAN V N	2006/07/26	0° ±2°	0.XXX	±.050	ECN 106-0123
Appr	HIRAN V N	2006/07/26	Product familyEyeMax (tm)			Spec ref -
FCI			title 4X R/A THUMSCREW RECPT			Rev. J
			ASSEMBLY, w/ 7 KEY SLOTS			
			catalog no -			
			dwg no 10009629			
			CUSTOMER			sheet 3 of 9

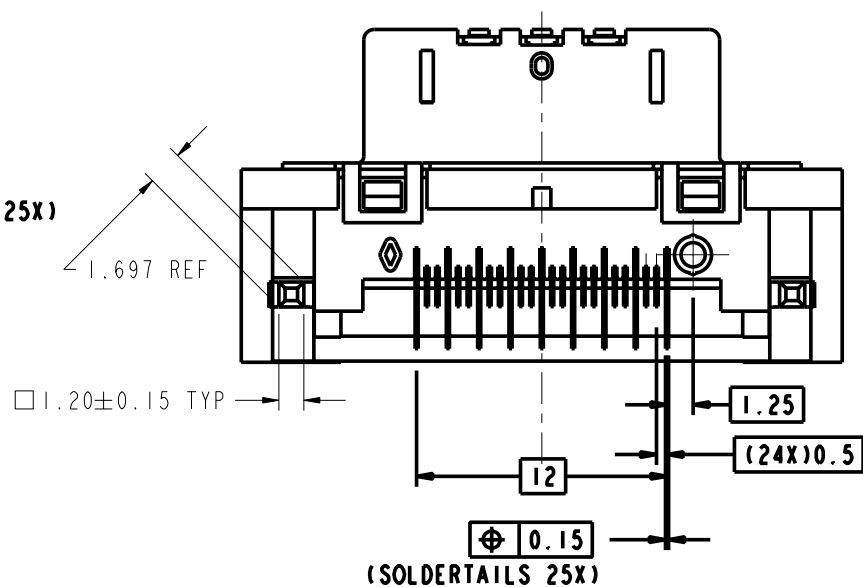
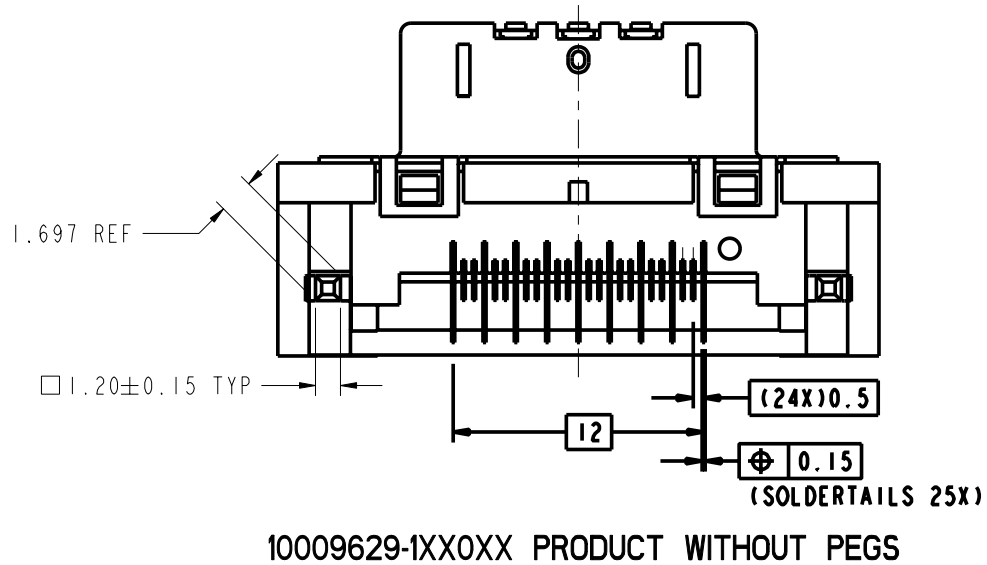
PDM: Rev:J




STATUS:Released

Printed: Aug. 23, 2006



Copyright FCI.



www.fciconnect.com			surface 3.2 ✓ ASME Y14.5		tolerance std ASME Y14.5 -		projection 		MM 	
			TOLERANCES UNLESS OTHERWISE SPECIFIED							
Dr	G.PETERS	2003/08/13	ANGULAR	LINEAR	0.X ±.3		size A4	Scale		
Eng	D.BRANN	2003/08/13			0.XX ±.10			3:1		
Chr	HIRAN V N	2006/07/26			0°.XXX ±.050			ECN 106-0123		
Appr	HIRAN V N	2006/07/26	Product family EyeMax (tm)					Spec ref -		
			title 4X R/A THUMSCREW RECPT				dwg no 10009629			Rev. J
			ASSEMBLY, w/ 7 KEY SLOTS							
			catalog no -				CUSTOMER			sheet 4 of 9

REV F - 2006-04-17

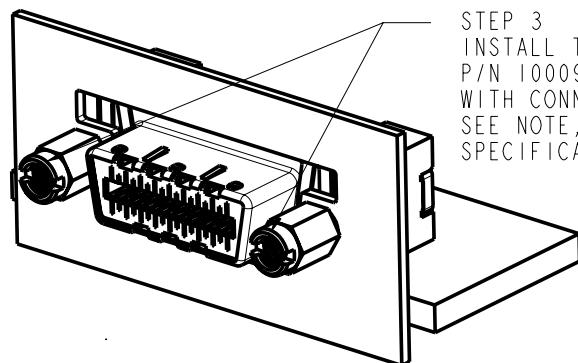
PDM: Rev:J

STATUS: Released

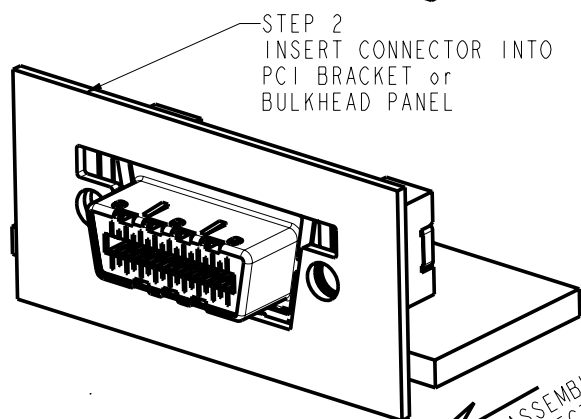
Printed: Aug. 23, 2006



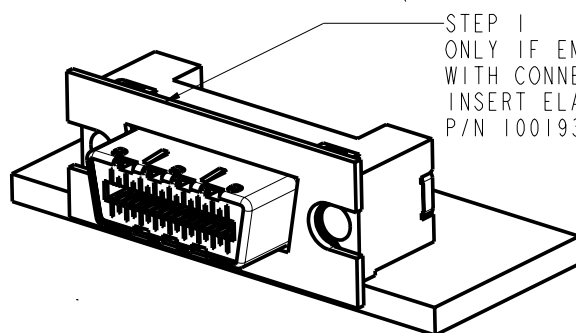
Copyright FCI.



STEP 3
INSTALL THREADED STANDOFFS
P/N 10009634-001, NOT SUPPLIED
WITH CONNECTOR ASSEMBLY
SEE NOTE, SHEET 8, FOR TORQUE
SPECIFICATION.



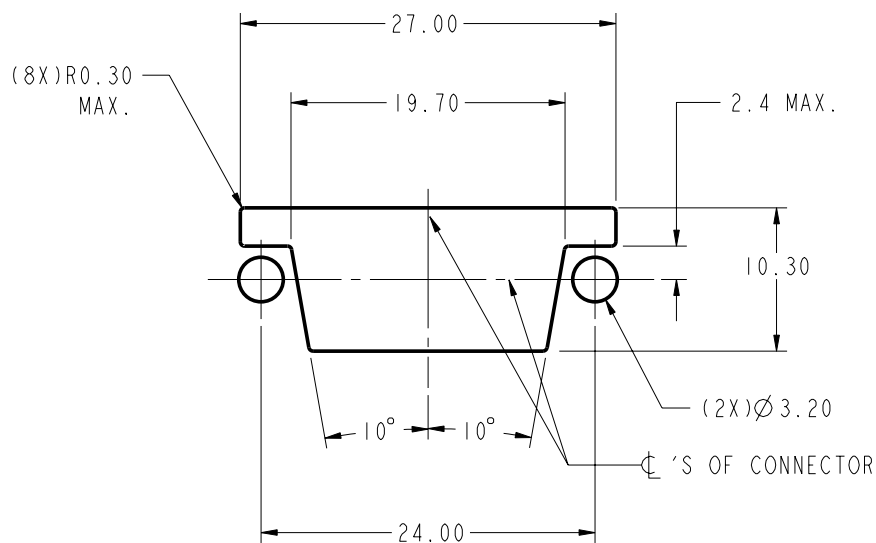
STEP 2
INSERT CONNECTOR INTO
PCI BRACKET or
BULKHEAD PANEL



STEP 1
ONLY IF EMI GASKET NOT SUPPLIED
WITH CONNECTOR ASSEMBLY.
INSERT ELASTOMERIC EMI GASKET,
P/N 10019396-001.

CONNECTOR ASSEMBLY
INSERTION DIRECTION

CONNECTOR APPLICATION TO PCI BRACKET/PANEL



RECOMMENDED PANEL CUTOUT

www.fciconnect.com			surface 3.2 ASME Y14.5	tolerance std ASME Y14.5	projection ASME Y14.5	MM
			TOLERANCES UNLESS OTHERWISE SPECIFIED			
Dr	G.PETERS	2003/08/13	ANGULAR	0.X	±.30	size A4 Scale 1:1
Eng	D.BRANN	2003/08/13	LINEAR	0.XX	±.10	
Chr	HIRAN V N	2006/07/26	0° ±2°	0.XXX	±.050	ECN 106-0123
Appr	HIRAN V N	2006/07/26	Product familyEyeMax (tm)			Spec ref -
FCI			4X R/A THUMBSCREW RECPT ASSEMBLY, w/ 7 KEY SLOTS			Rev. J
catalog no			dwg no 10009629			sheet 5 of 9
			CUSTOMER			

REV F - 2006-04-17

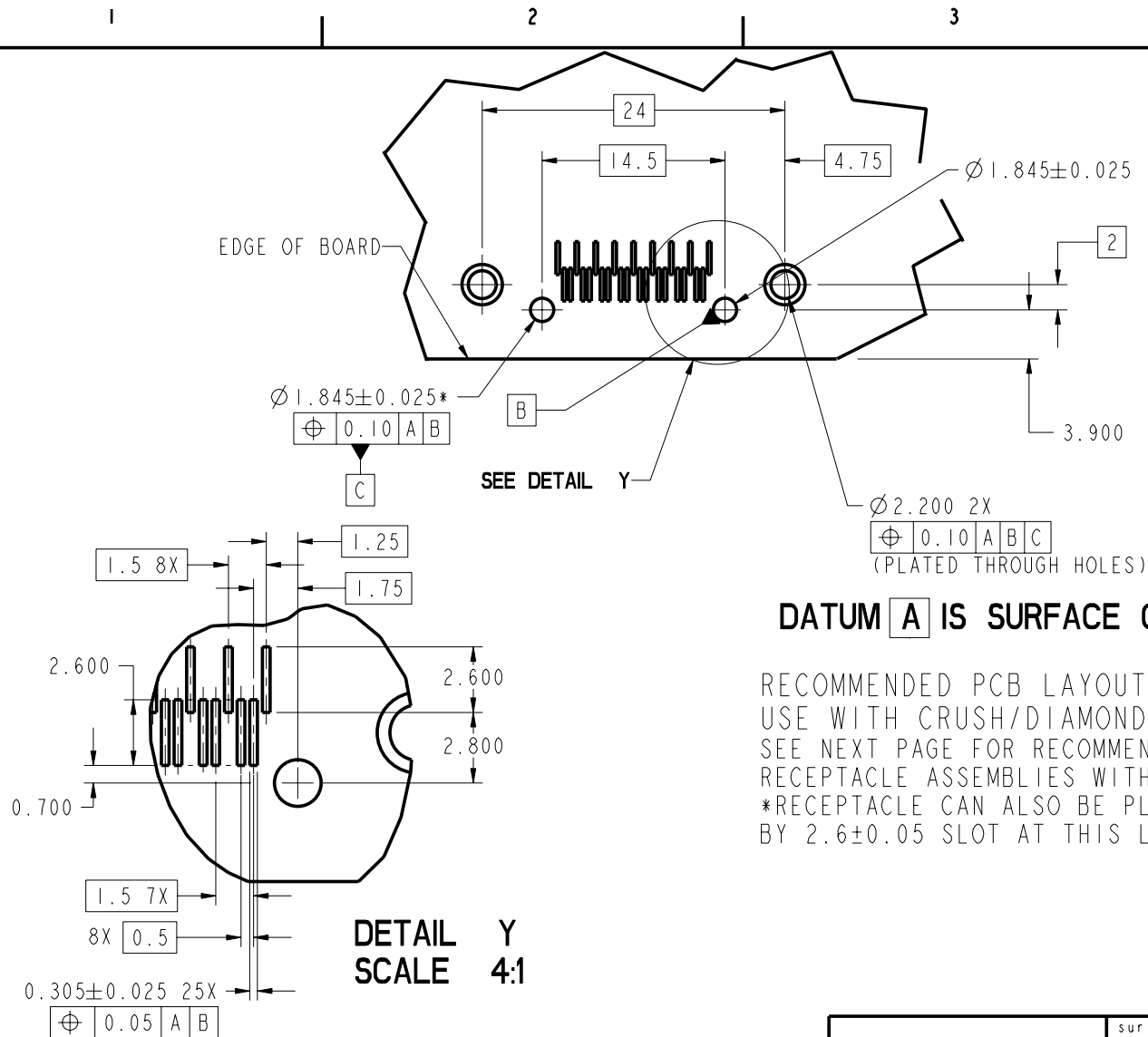
PDM: Rev:J

STATUS:Released

Printed: Aug. 23, 2006



Copyright FCI.



www.fciconnect.com			surface 3.2 ASME Y14.5	tolerance std ASME Y14.5	projection ASME Y14.5	MM
			TOLERANCES UNLESS OTHERWISE SPECIFIED:			
Dr	G.PETERS	2003/08/13	ANGULAR	0.X	±.30	size A4 Scale 1:1
Eng	D.BRANN	2003/08/13	LINEAR	0.XX	±.10	
Chr	HIRAN V N	2006/07/26	0° ±2°	0.XXX	±.050	ECN 106-0123
Appr	HIRAN V N	2006/07/26	Product family	EyeMax (tm)	Spec ref	-
FCI			4X R/A THUMBSCREW RECPT ASSEMBLY, w/ 7 KEY SLOTS			Rev. J
catalog no			10009629			sheet 6 of 9
			CUSTOMER			

REV F - 2006-04-17

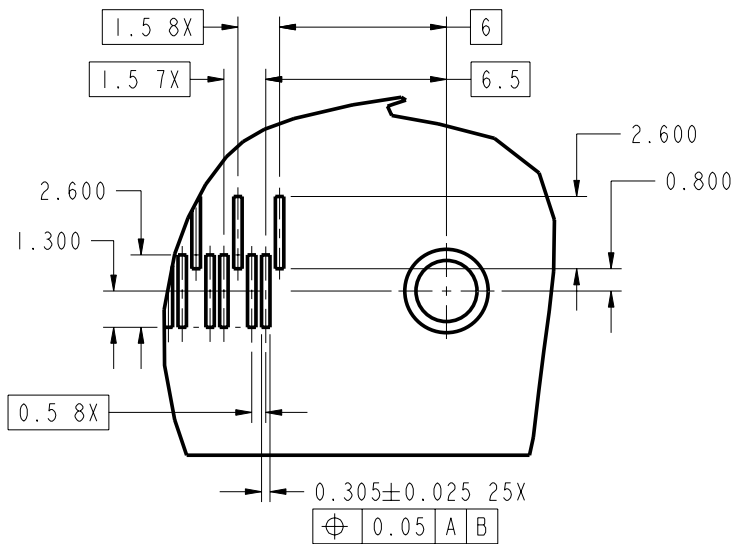
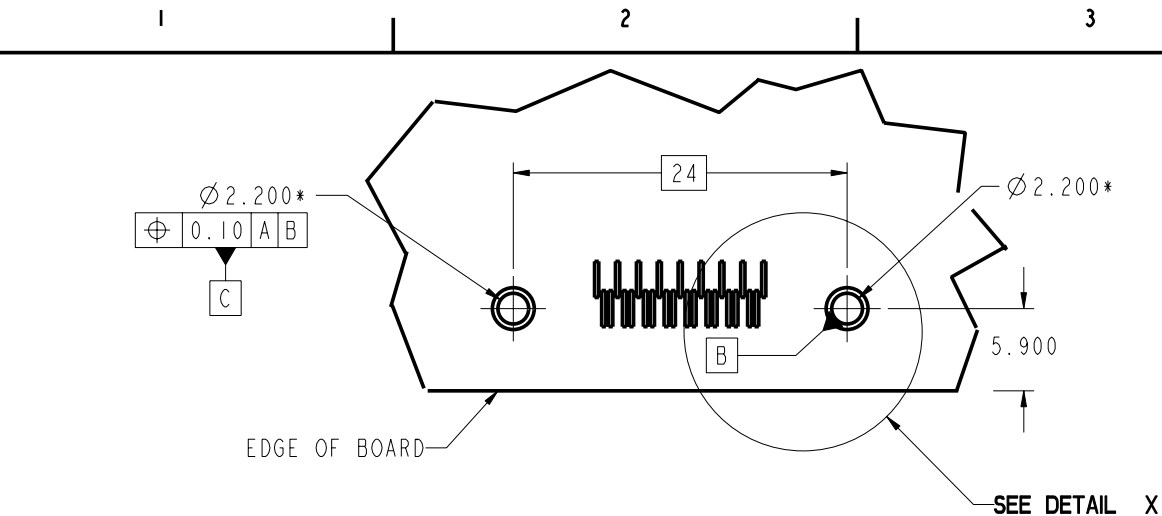
PDM: Rev:J

STATUS: Released

Printed: Aug. 23, 2006



Copyright FCI.



DETAIL X
SCALE 4:1

DATUM A IS SURFACE OF PCB

RECOMMENDED PCB LAYOUT, COMPONENT SIDE FOR USE
WITHOUT CRUSH/DIAMOND PEGS (10009629-1XX0XX)
SEE PREVIOUS PAGE FOR RECOMMENDED PCB LAYOUT FOR
RECEPTACLE ASSEMBLIES WITH CRUSH/DIAMOND PEGS.
*PLATED THROUGH HOLES

www.fciconnect.com			surface 3.2 ASME Y14.5	tolerance std ASME Y14.5	projection ASME Y14.5	MM
			TOLERANCES UNLESS OTHERWISE SPECIFIED:			
Dr	G. PETERS	2003/08/13	ANGULAR	0.X	±.30	size A4 Scale 1:1
Eng	D. BRANN	2003/08/13	LINEAR	0.XX	±.10	
Chr	HIRAN V N	2006/07/26	0° ±2°	0.XXX	±.050	ECN 106-0123
Appr	HIRAN V N	2006/07/26	Product family EyeMax (tm)			Spec ref -
FCI			4X R/A THUMSCREW RECPT ASSEMBLY, w/ 7 KEY SLOTS			Rev. J
catalog no			10009629			sheet 7 of 9
			CUSTOMER			

REV F - 2006-04-17

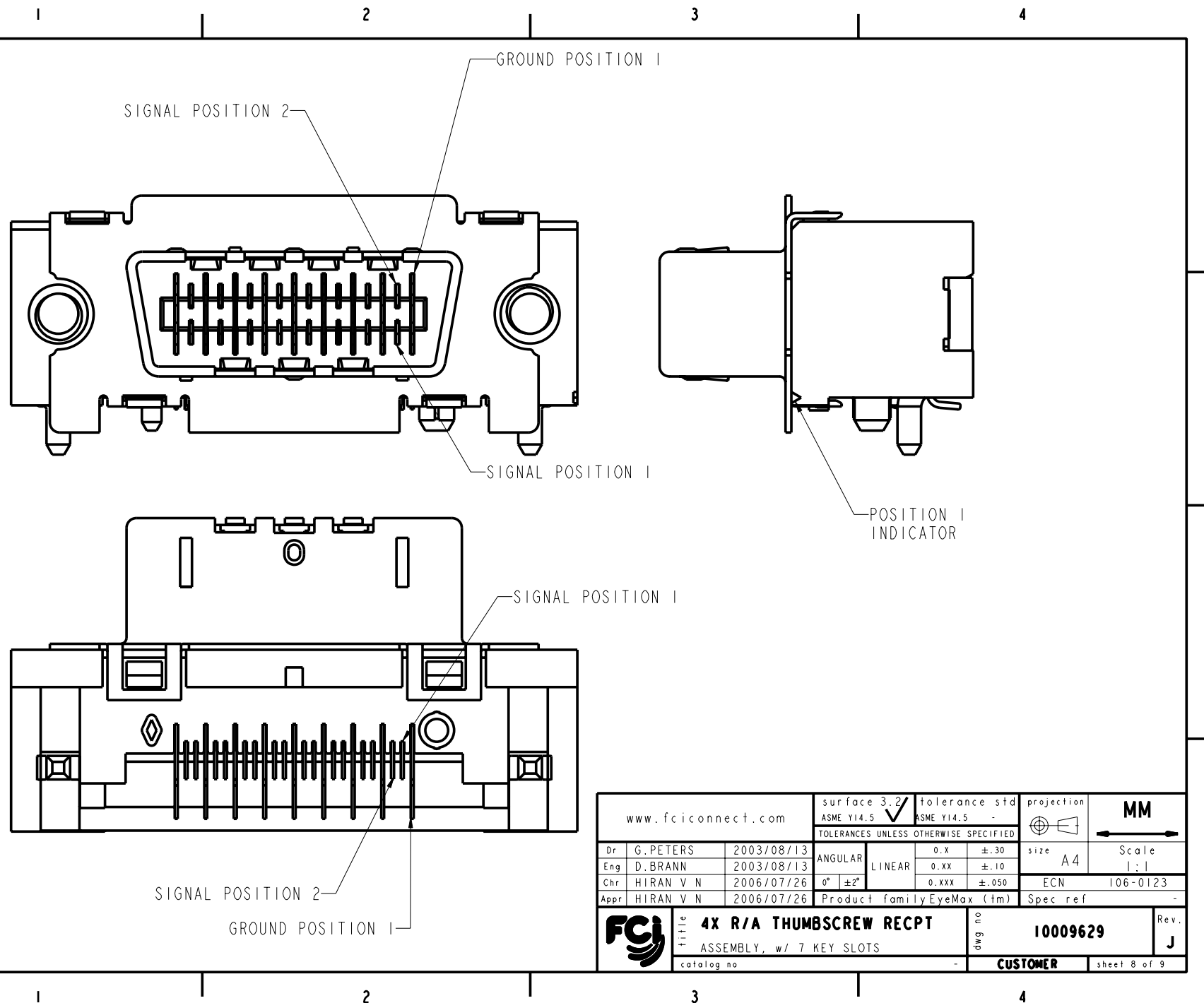
PDM: Rev:J

STATUS: Released

Printed: Aug. 23, 2006



Copyright FCI.



www.fciconnect.com			surface 3.2 ASME Y14.5	tolerance std ASME Y14.5	projection ASME Y14.5	MM
			TOLERANCES UNLESS OTHERWISE SPECIFIED:		size A4	Scale 1:1
Dr	G.PETERS	2003/08/13	ANGULAR	0.X	±.30	
Eng	D.BRANN	2003/08/13	LINEAR	0.XX	±.10	
Chr	HIRAN V N	2006/07/26	0° ±2°	0.XXX	±.050	ECN 106-0123
Appr	HIRAN V N	2006/07/26	Product familyEyeMax (tm)		Spec ref	-
FCI			title 4X R/A THUMBSCREW RECPT ASSEMBLY, w/ 7 KEY SLOTS		dwg no 10009629	Rev. J
catalog no			CUSTOMER		sheet 8 of 9	

REV F - 2006-04-17

PDM: Rev:J

STATUS:Released

Printed: Aug. 23, 2006

PRODUCT NUMBER
10009629-1XXXXX

10009629-1XXXXXXYY

SOLDERTAIL PLATING
BLANK-TIN-LEAD
LF-LEAD FREE (SEE NOTE 2)

KEYING OPTIONS
0-NONE

PACKAGING
1-TAPE & REEL
2-TRAY
3-TAPE & REEL WITH THREADED STAND-OFFS INCLUDED
(PACKAGED SEPERATELY). 2 PER CONNECTOR.
4-TRAY WITH THREADED STAND-OFFS INCLUDED
(PACKAGED SEPERATELY). 2 PER CONNECTOR.

PEGS
0-NONE
1-CRUSH/DIAMOND PEGS

PCB THICKNESS
1-1.6mm
2-2.4mm
3-4.0mm

EMI GASKET
0-WITH FOAM GASKET
1-WITHOUT GASKET
2-WITH METAL GASKET (NOT TOOLED)

PLATING
GOLD OVER NICKEL IN CONTACT AREA

CONNECTOR NOTES:

1. HOUSING MATERIAL: UL94 V-0 LCP RESIN.
SIGNAL PIN MATERIAL: COPPER ALLOY.
GROUND CONTACT MATERIAL: COPPER ALLOY.
2. PLATING: LEAD FREE SOLDER TAILS 2 μ m (80 μ in) MIN MATTE TIN
OVER 1.27 μ m (50 μ in) MIN NICKEL UNDERPLATE.
3. P/N AND DATE CODE TO APPEAR
ON THIS SURFACE.
4. PRODUCT SPECIFICATION GS-12-209.
APPLICATION SPECIFICATION GS-20-025.
5. CONNECTOR WEIGHT = 5.465 grams
6. PACKAGING SPECIFICATION GS-14-794. PACKAGING OF LEAD FREE
PRODUCTS MEETS LABELING AND PACKAGING SPECIFICATION GS-14-920.
7. MAXIMUM PANEL THICKNESS 1.70mm
8. MAXIMUM TORQUE 0.45 N-m (4.0 lbf-in)

PCB NOTES:

9. ALL DIMENSIONS ARE BASIC UNLESS OTHERWISE
SPECIFIED.
10. ALL HOLE DIAMETERS ARE FINISHED HOLE SIZE
11. MATES WITH EYEMAX (R) PLUG 58443 (WITHOUT PCB), 58638
(WITH UNEQUALIZED PCB) OR 10026692 (WITH EQUALIZED PCB).
12. LEAD FREE PRODUCTS MEET EUROPEAN UNION DIRECTIVES AND
OTHER COUNTRY REGULATIONS AS DESCRIBED IN GS-22-008.
13. THE HOUSING WILL WITHSTAND EXPOSURE TO 260°C PEAK TEMPERATURE
FOR 15 SECONDS IN A CONVECTION, INFRARED OR VAPOR PHASE REFLOW
OVEN.

PRODUCT NUMBER	BOARD THICKNESS	DIM A
10009629-1X1XXX	1.6mm	2.3mm
10009629-1X2XXX	2.4mm	3.1mm
10009629-1X3XXX	4.0mm	4.7mm

www.fciconnect.com			surface 3.2 ASME Y14.5	tolerance std ASME Y14.5	projection MM
			TOLERANCES UNLESS OTHERWISE SPECIFIED:		
Dr	G.PETERS	2003/08/13	ANGULAR	0.X ±.30	size A4 Scale 1:1
Eng	D.BRANN	2003/08/13	LINEAR	0.XX ±.10	
Chr	HIRAN V N	2006/07/26	0° ±2°	0.XXX ±.050	ECN 106-0123
Appr	HIRAN V N	2006/07/26	Product family EyeMax (tm)		Spec ref -
FCI			title 4X R/A THUMBSCREW RECPT ASSEMBLY, w/ 7 KEY SLOTS		dwg no 10009629
catalog no			CUSTOMER		Rev. J
			sheet 9 of 9		