

SPECIFICATIONS

Mechanical

Contact Retention Force: 0.75Lbs (0.34kgf) min. per Contact
Durability: 25 Cycles
Dram Board Insertion Force: 3 oz max. per Contact

Electrical

Voltage Raging: 250V AC
Current Rating: 1.0A max., 30 max., in Temperature Rise
Insulation Resistance: 1000MW min. initial
Dielectric Withstanding Voltage: 500V AC at Sea Level
Low Level Contact Resistance: 30mW max. initial

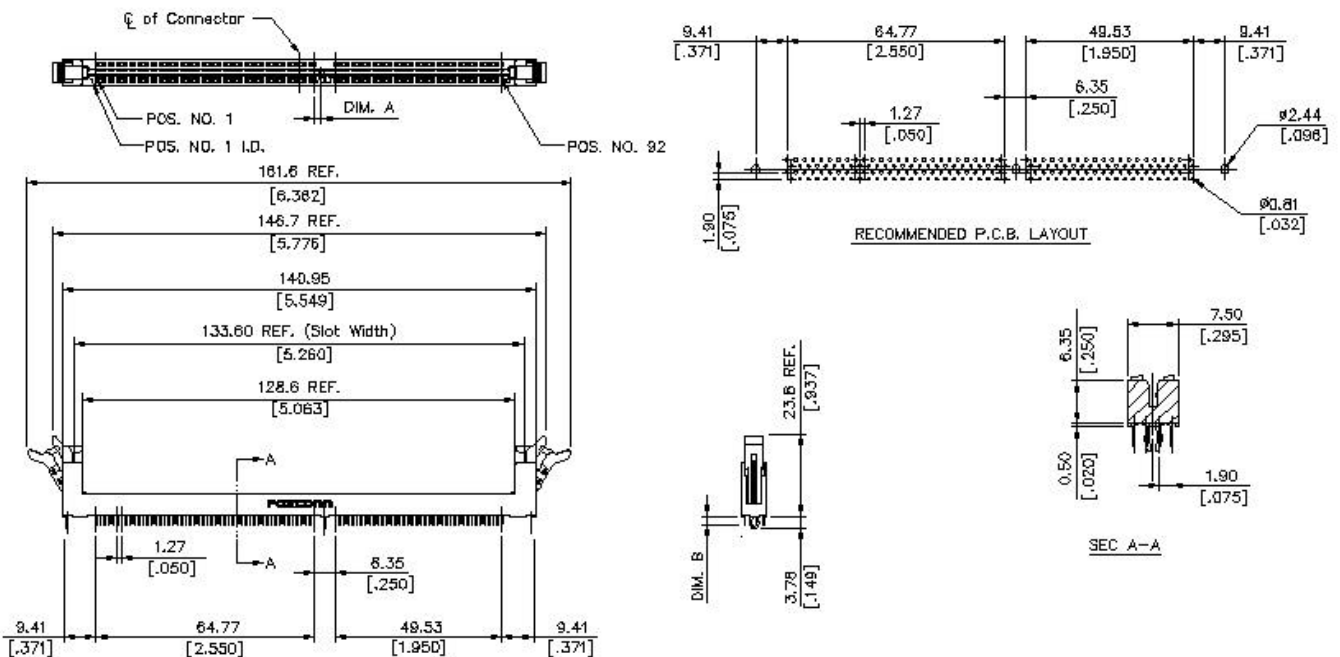
Physical

Housing: Thermoplastic, UL 94V-0 rated in Black Color
Contact: Copper alloy
Ejector: Thermoplastic, UL 94V-0 rated in Ivory or Natural Color
Metal Hold Down: Copper alloy
Operating Temperature: -55 to +105

AT092 Series
Vertical Type, T/H Type
1.27mm [.050"] Pitch
184 Pos.



DRAWING



ORDERING INFORMATION

PRODUCT NO.: AT092** - D5E - **

Vertical DIMM with Contact Pitch of .050"
 Single Row.
 No. of Pos. 92=184 Pos.
 Tail Length 0=3.15 [.124] 1=2.67 [.105]
 Contact Area Plating 1=Gold Flash 2=20u" Gold 3=30u" Gold 6=10u" Gold 7=15u" Gold
 Plating Type 4N=Tin/Lead 4F=Lead Free
 Extension Code

| | | | | |
|----------------|------|-----------------|--------------|-------------|
| AT0920*-D5E-4F | 184 | 2.5V | 2.175 [.088] | 3.15 [.124] |
| AT0921*-D5E-4F | | 2.5V | 2.175 [.088] | 2.67 [.105] |
| P/N | POS. | VOLTAGE MARKING | DIM. A | DIM. B |