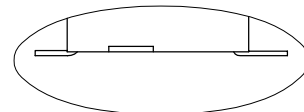
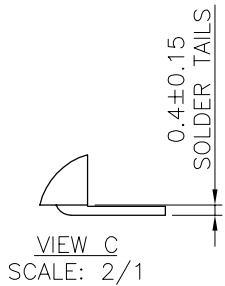
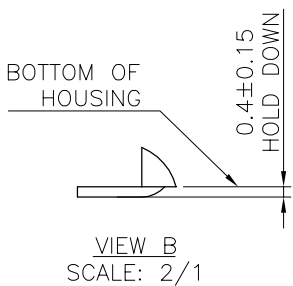
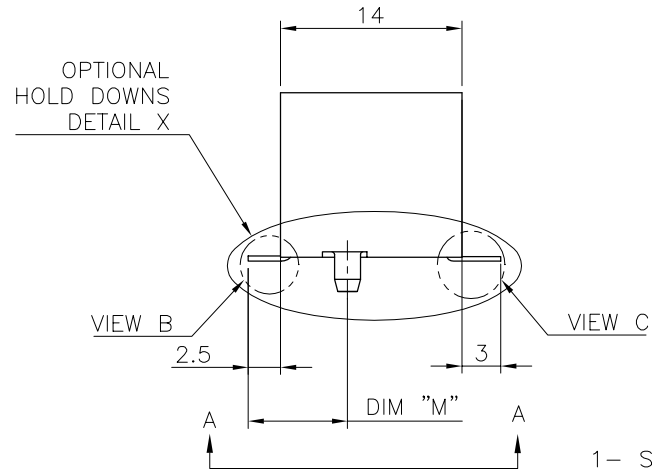
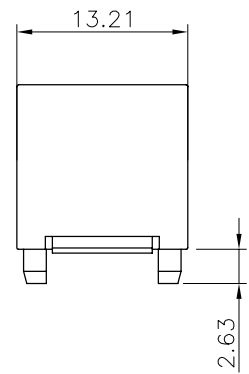
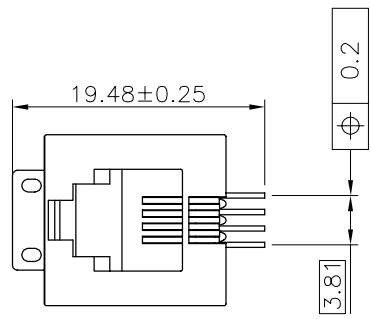
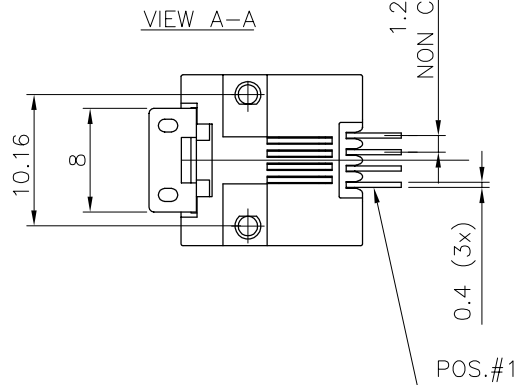
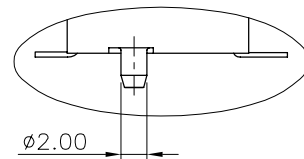


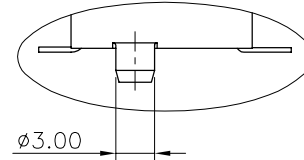
PRODUCT NO.
SEE TABLE



DETAIL X
NO PEGS -XX1X



DETAIL X
2.0 MM DIA PEGS -XX2X



DETAIL X
3.0 MM DIA PEGS -XX3X

NOTES

- 1- SOLDER TAILS COPLANARITY: 0.1 mm
- 2- SOLDER TAILS / HOLD DOWN COPLANARITY: 0.15 mm

CUSTOMER COPY FOR REFERENCE ONLY

mat'l. code SEE NOTES				tolerances unless otherwise specified		CUSTOMER COPY	ELECTRONICS www.fciconnect.com	title	
ltr	ecn no	dr	date					E-SMT VERT 4 POS ASSEMBLY	
F	V70186	GAH	97.02.17	linear	±0.13	projection			
G	F70177	JLC	97.07.11						
H	F80169	DLE	98.05.28	angles	±2'	mm			
J	F80620	DLE	98.11.26	dr	JL CORDIER 97.07.11	scale		product family	MODULAR JACK
K	F00498	GCO	00.09.14	engr	AESCHBACHER 97.07.11	5:2		size	dwg no
				chr	JL CORDIER 97.07.11			A3	87557
				appd	M.AE 97.07.11				213
sheet	revision	K	J	C					1 of 3
index	sheet	1	2	3					

PRODUCT NO.

87557-XXXX

CONTACT PLATING
OPTIONS

1= GXT 0.76um

PACKAGE OPTIONS

BLISTER PACKAGE

1= LOADED FACE UP

3= PACKAGED IN TUBES

BLISTER PACKAGE

4= LOADED FACE UP

TURNED AT 180° VERSUS 1

PEG OPTIONS

1= NO PEGS

2= $\varnothing 2.00$ PEGS3= $\varnothing 3.00$ PEGSPWB
THRU HOLE SIZE

NO THRU HOLES

 $\varnothing 2.25^{+0.1}_{-0}$ HOLES $\varnothing 3.25^{+0.1}_{-0}$ HOLES

DIM 'M'

0

7.64

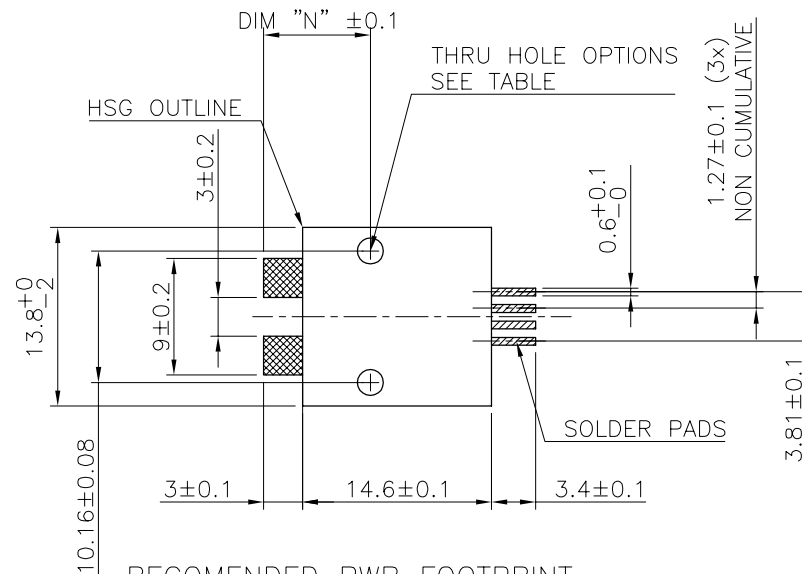
7.44

DIM 'N'

0

8.14

7.94

TERMINAL LOADING
OPTIONS1= FULLY
LOADED

RECOMENDED PWB FOOTPRINT

NOTES:

- MATERIAL:
HOUSING: HIGH TEMP. NYLON, COLOR BLACK
TERMINAL: PHOSPHOR BRONZE
- PLATING:
CONTACT AREA: OPTIONAL SEE TABLE
SOLDER TAIL: SnPb 90/10 2um MIN
NO RAW EDGES EXCEPT SOLDER TAIL TIPS

CUSTOMER COPY FOR REFERENCE ONLY

mat'l. code SEE NOTES				tolerances unless otherwise specified		CUSTOMER COPY	FCI ELECTRONICS www.fciconnect.com		
ltr	ecr no	dr	date	linear	± 0.13		projection	title	
F	V70186	GAH	97.02.17	linear				E-SMT VERT	
G	F70177	JLC	97.07.11					4 POS ASSEMBLY	
H	F80169	DLE	98.05.28	angles	$\pm 2'$				
J	F80620	DLE	98.11.26	dr	JL CORDIER 97.07.11			product family	MODULAR JACK
				engr	AESCHBACHER 97.07.11			size	dwg no
				chr	JL CORDIER 97.07.11			A3	87557
				appd	M.AE 97.07.11			scale	5:2
sheet	revision								
index	sheet								

PRODUCT NO.

87557-XXXX

LTR	PART NAME	QTY
1	JACK	300
2	TAPE	1
3	REEL	1
4	COVER TAPE	1

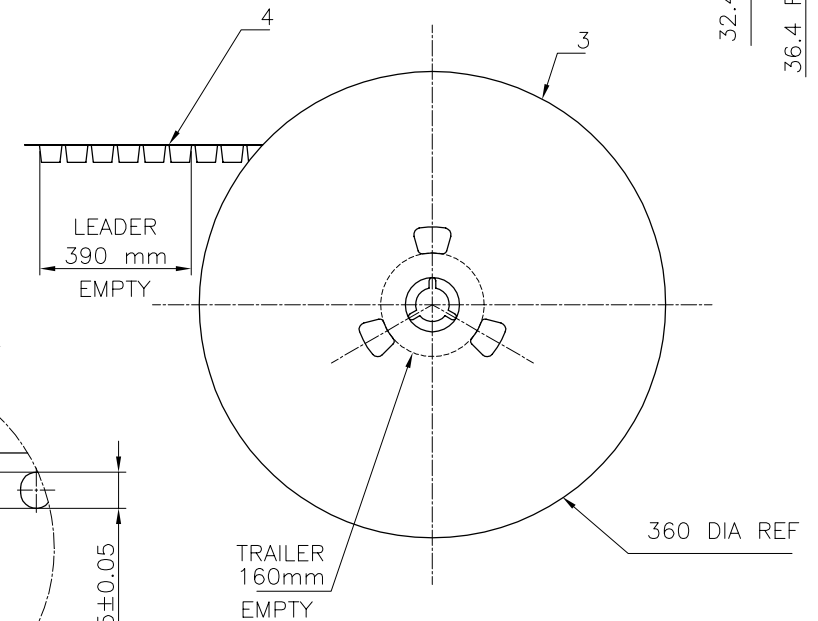
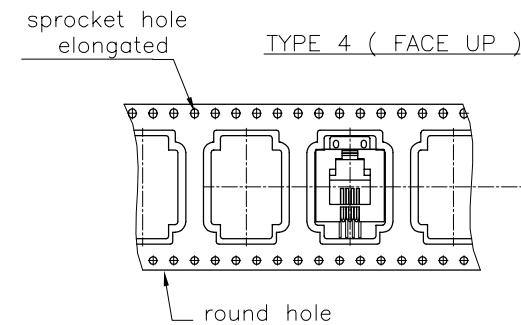
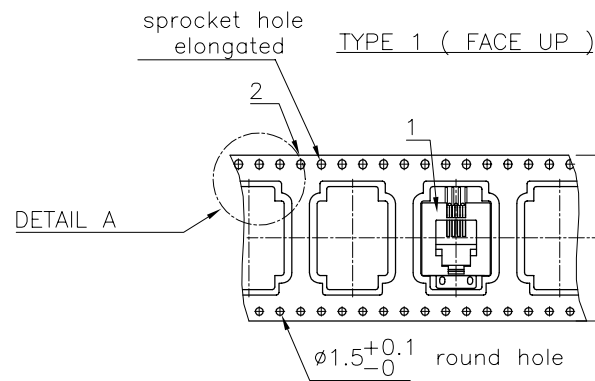
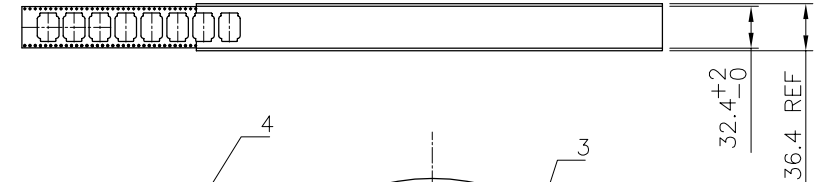
TERMINAL P/N	TERMINAL LOADING OPTIONS
1	FULLY LOADED 4 POSITION

SCALE 1:4


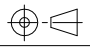
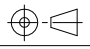
CONTACT PLATING OPTIONS
1 = GXT .76um

PACKAGE OPTIONS
BLISTER PACKAGE 1 = LOADED FACE UP
BLISTER PACKAGE 4 = LOADED FACE UP TURNED AT 180° VERSUS 1

HOUSING P/N	PEG OPTIONS
1	NO PEGS

DETAIL A
SCALE 4:1

1- IN ACCORDANCE WITH EIA-481 AND IEC 286-3

mat'l. code				tolerances unless otherwise specified		CUSTOMER COPY	 ELECTRONICS www.fciconnect.com	title	
ltr	ecp no	dr	date	linear				projection	
A	F70177	MAE	97.04.07	angles					
B	F80169	DLE	98.05.28	dr	3DM	97.03.24		product family	MOD JACK
C	F00498	GCO	00.09.14	engr	MAE	97.03.24		size	dwg no
				chr	O. MATHEVON	97.03.24		A3	87557
				appd	MAE	97.03.24		scale	1:1
sheet	revision								
index	sheet								