

DESCRIPTION: ABOVE & BELOW PCB, DECK AND PUSH ROD LOCATION ARE AS VIEW BY USER.

PRODUCT NO. 93981-XXXX	PUSH-ROD LOCATION		STAND-OFF HEIGHT DIM "L"	DIM "P"	DOUBLE - DECK HEADER 92821-XXX	EJECT MECHANISM 92192-XXXX	EJECT MECHANISM 92192-XXXX	MOUNTING STYLE TO PCB AND PUSH-ROD SIDE
	DECK CLOSEST TO PCB	DECK FARTHEST FROM PCB						
000CA	LEFT	RIGHT	0.0	2.8	92821-000	10CA	00CA	
020CA	LEFT	RIGHT	2.0	2.5	92821-040	12CA	00CA	
100CA	RIGHT	LEFT	0.0	2.8	92821-000	00CA	10CA	
120CA	RIGHT	LEFT	2.0	2.5	92821-040	02CA	10CA	
200CA	RIGHT	RIGHT	0.0	2.8	92821-000	00CA	00CA	
220CA	RIGHT	RIGHT	2.0	2.5	92821-040	02CA	00CA	
300CA	LEFT	LEFT	0.0	2.8	92821-000	10CA	10CA	
320CA	LEFT	LEFT	2.0	2.5	92821-040	12CA	10CA	
500CA	RIGHT	LEFT	0.0	2.8	92821-500	10CA	00CA	
520CA	RIGHT	LEFT	2.0	2.5	92821-540	12CA	00CA	
600CA	LEFT	RIGHT	0.0	2.8	92821-500	00CA	10CA	
620CA	LEFT	RIGHT	2.0	2.5	92821-540	02CA	10CA	
700CA	RIGHT	RIGHT	0.0	2.8	92821-500	10CA	10CA	
700CP	RIGHT	RIGHT	0.0	2.8	92821-500	10CP	10CP	
720CA	RIGHT	RIGHT	2.0	2.5	92821-540	12CA	10CA	
800CA	LEFT	LEFT	0.0	2.8	92821-500	00CA	00CA	
820CA	LEFT	LEFT	2.0	2.5	92821-540	02CA	00CA	

NOTES:

- EJECT FORCE 3.5kg MAX.
- EJECT TRAVEL - 8.0mm
- HEADER ASSY
PLASTIC: HOUSING - LCP UL94V-0 BLACK (ABOVE P.C.B.)
- LCP UL94V-0 NATURAL (BELOW P.C.B.)
LOCATOR - G.F. 6/6 NYLON UL94V-0
BLACK
PIN: PHOSPHOR BRONZE
EJECT MECHANISM ASSY
PLASTIC: GUIDE & PUSH ROD
POLYTHARAMIDE UL94V-0 BLACK
COVER PLATE: STAINLESS STEEL
EMI CONTACT: PHOSPHOR BRONZE
- FINISH - PIN
UNDER PLATING: 0.5 μ m MIN. Ni
CONTACT AREA: 0.1 μ m MIN GOLD OVER
0.5 μ m MIN Pd-Ni
SOLDER TAIL: 2.5 μ m MIN Sn-Pb

⑤ DIM "X"

4.25 \pm .1	3.5 \pm .1	5.0 \pm .1
OTHERS	36,67	1,17,34,35,51,68

- RECOMMENDED HOLD DOWN - 2mm SCREWS (95121) AND NUTS (92869). SEE FOR CHARTED INFORMATION. RECOMMENDED SCREW TORQUE: 1.0 TO 1.5 MAX in-lbs. (1.2-1.7 cm-kgs).

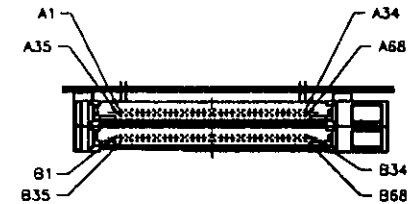
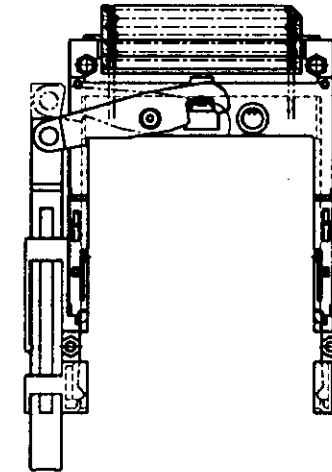
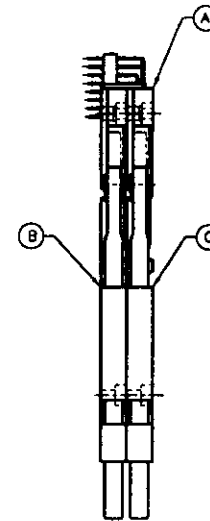
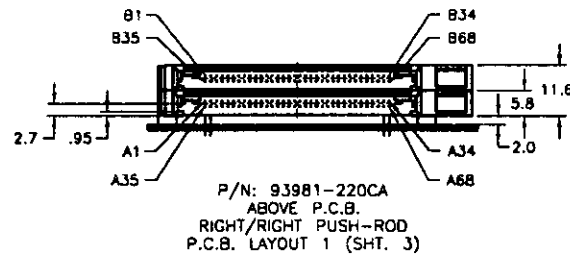
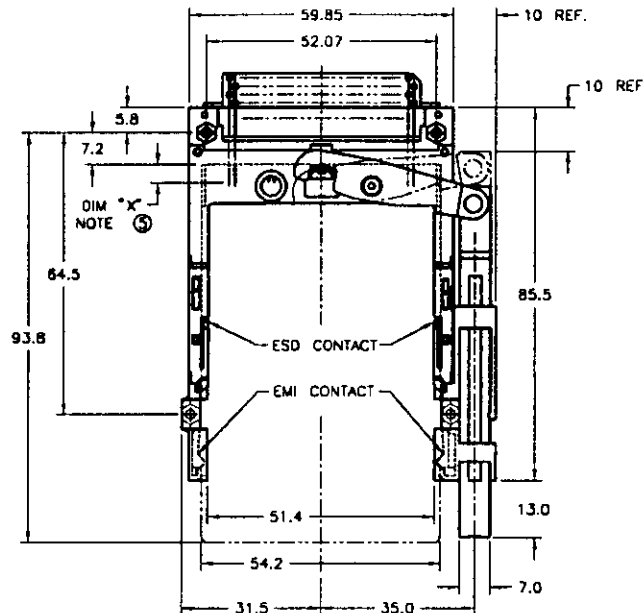
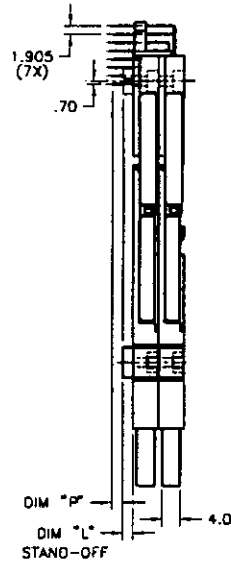
mat'l. code				tolerances unless otherwise specified		CUSTOMER COPY	BERG ELECTRONICS		
ltr	ecr no	dr	date						
A	V31898	RDS	11/1/93	linear	.X \pm .3	projection 	title DOUBLE - DECK HEADER EJECT ASSY	product family MCS	code -
B	V40630	RDS	4/6/94		.XX \pm .13				
C	V41771	RDS	11/8/94	angles	.XXX \pm .051				
D	V61058	RHG	7/29/96	dr	0.5 SHEAFFER 9/30/93	mm scale 1/1	size A4	dwg no 93981	sheet 1 of 3
				engr	0.8RANN 11/1/93				
				chr	0.8RANN 11/1/93				
				appd	0.8RANN 11/1/93				
sheet index	revision sheet	0	0	0					
		1	2	3					

Tous droits strictement réservés. Reproduction ou communication à des tiers interdite sous quelque forme que ce soit sans autorisation écrite du propriétaire.
Propriété de ©BERG ELECTRONICS. Droits de reproduction BERG ELECTRONICS INC.

BERG
ELECTRONICS

All rights strictly reserved. Reproduction or issue to third parties in any form whatever is not permitted without written authority from the proprietor.
Property of ©BERG ELECTRONICS Copyright BERG ELECTRONICS INC.

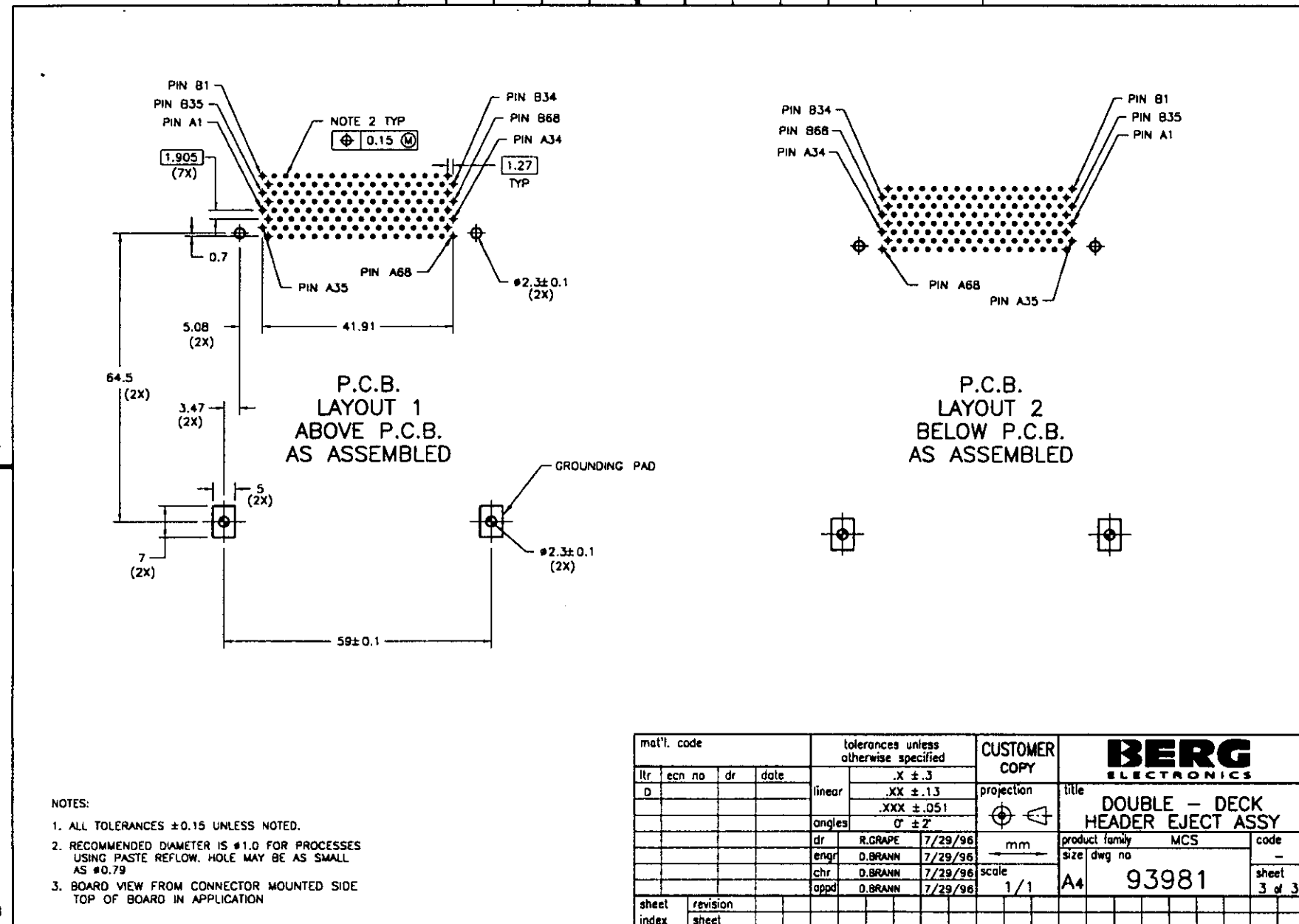
PRODUCT NO.
93981-XXXX



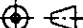

P/N: 93981-720CA
BELOW P.C.B.
RIGHT/RIGHT PUSH-ROD
P.C.B. LAYOUT 2 (SHT. 3)
*VIEW ROTATED 180°
PUSH-ROD & DECK ARE
AS VIEWED BY USER

mat'l. code				tolerances unless otherwise specified		CUSTOMER COPY	BERG ELECTRONICS		
ltr	ecn no	dr	date	linear	angular				
0				.X ± .3	0° ± 2'	projection	title		
				.XX ± .13		mm			
				.XXX ± .051		scale	product family MCS		
						1/1			
				dr R.GRAPE 7/29/96			size dwg no		
				enqr D.BRANN 7/29/96					
				chr D.BRANN 7/29/96			93981		
				oppd D.BRANN 7/29/96					
sheet index	revision sheet						cage code		
							22526		

form no. 7530-001-103



form no. 7530-001-103

mat'l. code				tolerances unless otherwise specified		CUSTOMER COPY		BERG ELECTRONICS				
ltr	ecm no	dr	date	linear	.X $\pm .3$		projection 	title DOUBLE - DECK HEADER EJECT ASSY				
D					.XX $\pm .13$							
					.XXX $\pm .051$							
				angles	0° $\pm 2^\circ$			product family MCS code size dwg no - sheet 3 of 3				
				dr	R.GRAPE	7/29/96						
				engr	D.BRANN	7/29/96						
				chr	D.BRANN	7/29/96						
				appd	D.BRANN	7/29/96						
sheet	revision						scale	1/1		A4		
index	sheet											
							3	cage code 22526				4