

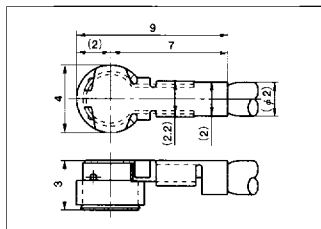
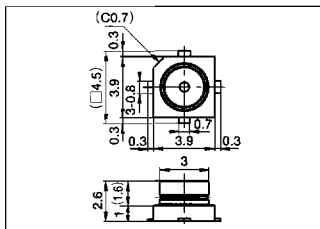
# SMK COAXIAL CONNECTOR

## TC-1 Series (2GHz)



SOCKET:CRS5001-0101

PLUG:CRS9001-0101



COAXIAL CONNECTOR (SMT TYPE)  
SMT対応同軸コネクタ (2GHz対応)

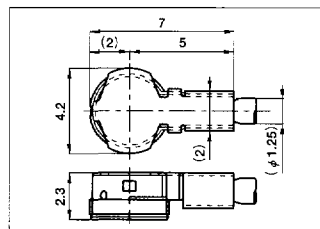
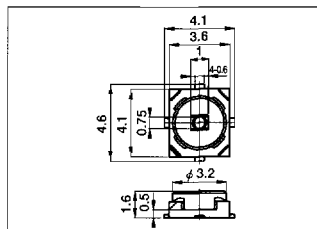
- Frequency Range:DC~2GHz
- Characteristic Impedance:50Ω
- V.S.W.R.:1.2 max.
- Insulation Resistance:500MΩ min. at 250V DC
- Operating Temperature:-40°C~+90°C

## TC-2 Series (3GHz)



SOCKET:CRS5001-0201

PLUG:CRS9001-0401



COAXIAL CONNECTOR (SMT TYPE)  
SMT対応同軸コネクタ (3GHz対応)

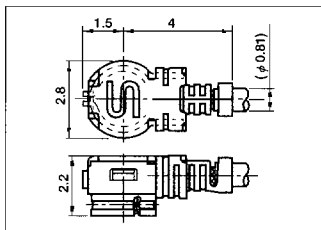
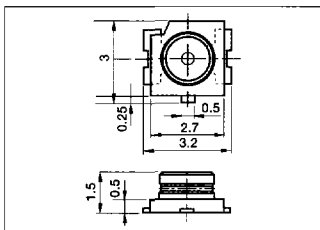
- Frequency Range:DC~3GHz
- Characteristic Impedance:50Ω
- V.S.W.R.:1.2 max.
- Insulation Resistance:500MΩ min. at 250V DC
- Operating Temperature:-40°C~+90°C

## TC-3 Series (3GHz)



SOCKET:CRS5001-0801

PLUG:CRS9001-1101



COAXIAL CONNECTOR (SMT TYPE)  
SMT対応同軸コネクタ (3GHz対応)

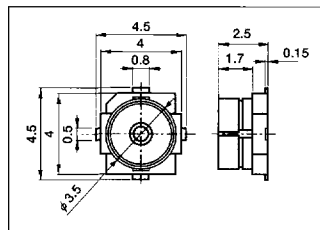
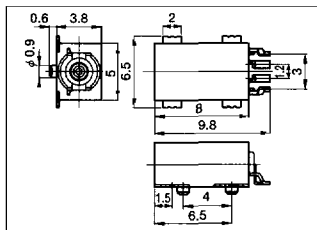
- Frequency Range:DC~3GHz
- Characteristic Impedance:50Ω
- V. S. W. R.:1.3 max.

## TS-1 Series (SMT Type)



CRS5001-0301

CRS5001-0904



COAXIAL CONNECTOR WITH SWITCH  
SMT対応スイッチ付同軸コネクタ

- Frequency Range:DC~2GHz
- Characteristic Impedance:50Ω
- Insulation Resistance:1000MΩ min. at 100V DC
- Operating Temperature:-40°C~+85°C

COAXIAL CONNECTOR WITH SWITCH  
SMT対応スイッチ付同軸コネクタ

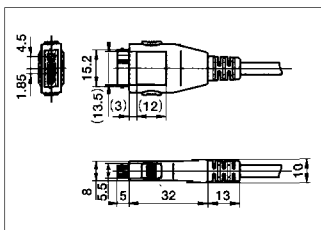
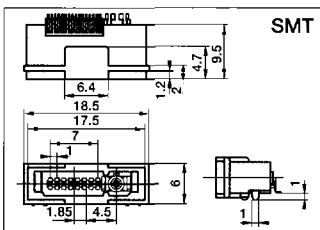
- Frequency Range:DC~2GHz
- Characteristic Impedance:50Ω
- V. S. W. R.:1.45 max.
- Rating:100V AC/DC
- Operating Temperature:-10°C~+60°C

## DI-1 Series (One Coaxial)



RECEPTACLE:CSS5016-0501

PLUG:CSC1016-0401



MULTIPIN CONNECTOR WITH COAXIAL  
同軸付多極コネクタ (1軸タイプ)

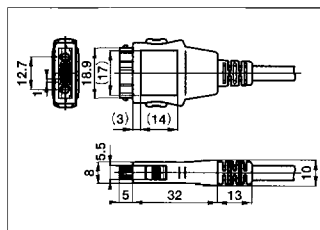
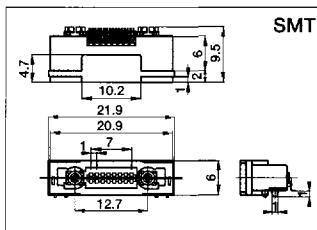
- Frequency Range:DC~2GHz
- Characteristic Impedance:50Ω
- Maximum Power:1W (Coaxial Section)
- Insulation Resistance:1000MΩ min. at 100V DC
- Operating Temperature:-40°C~+85°C

## DI-2 Series (Two Coaxial)



RECEPTACLE:CSS5016-04□□

PLUG:CSC1016-02□□



MULTIPIN CONNECTOR WITH COAXIAL  
同軸付多極コネクタ (2軸タイプ)

- Frequency Range:DC~2GHz
- Characteristic Impedance:50Ω
- Maximum Power:1W (Coaxial Section)
- Insulation Resistance:1000MΩ min. at 100V DC
- Operating Temperature:-40°C~+85°C