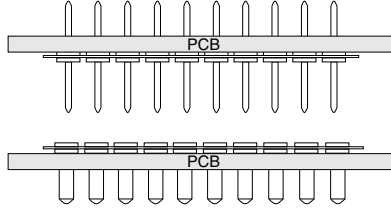
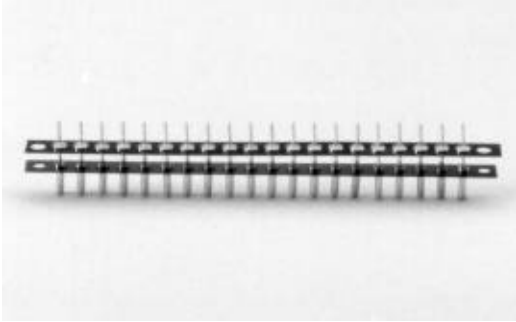




2 mm (.079") Pitch Board to Board Interconnections



Features:

- Supplied in high temperature Peel-A-Way® removable terminal carrier.
- Sockets and adapters are redesigned in mating pairs.
- 2mm (.079") centers pin to pin.
- High reliability screw machine terminals with closed end construction for 100% anti-wicking of solder.
- For surface mount board to board options consult factory.

Terminals and Contacts:

Terminal: Brass-Copper Alloy 360, ASTM-B-16

Contact: Beryllium Copper-Copper Alloy 172, ASTM-B-194

Plating:

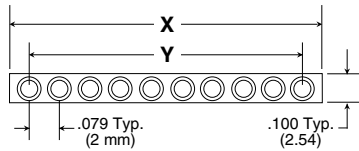
Terminal: Gold over Nickel or Tin-Lead over Nickel

Contact: Gold over Nickel or Tin-Lead over Nickel

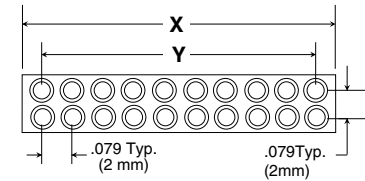
Body Material:

Polyimide Film, Temp. range -269 C to 400°C (-452 F to 752 F)

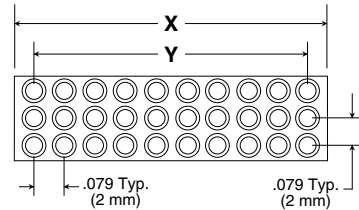
Single Row KMA-Male/KMS-Female



Dual Row KMB-Male/KMD-Female



Triple Row KMC-Male/KMT-Female



#of Pins Per Row	X	Y
10	.866 (22.00)	.709 (18.00)
20	1.6540 (42.00)	1.500 (38.00)
30	2.441 (62.00)	2.283 (58.00)
40	3.228 (82.00)	3.070 (78.00)
50	4.016 (102.00)	3.858 (98.00)

How To Order - Male

KMA010-165T

Body Type
KMA - Single Row
KMB - Dual Row
KMC - Triple Row

Terminal Plating
G - Gold
T - Tin-Lead
Terminal Type

Number of Pins
10, 20, 30, 40 & 50 positions per row standard. For other lengths consult factory.

How To Order - Female

KMS010-85TG

Body Type
KMS - Single Row
KMD - Dual Row
KMT - Triple Row

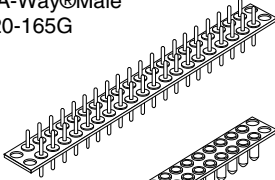
Contact Plating
G - Gold/Tin-Lead
Terminal Plating
G - Gold/Tin-Lead
Terminal Type

Number of Pins
10, 20, 30, 40 & 50 positions per row standard. For other lengths consult factory.



2 mm (.079") Pitch Board to Board Interconnections

Peel-A-Way® Male
MB020-165G



Peel-A-Way® Female
MD020-85TG

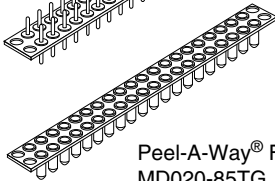


Figure1
ThruHole

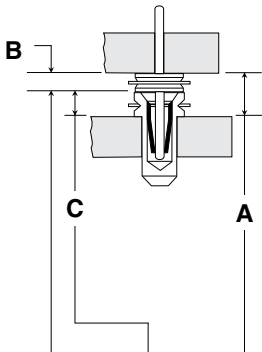
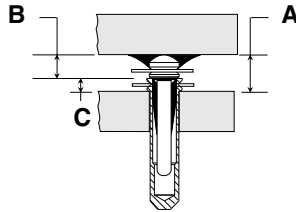


Figure2
SurfaceMount



Order One ach Male Female
To Get the Reuired "A" Dim.

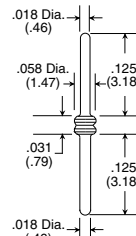
B	C	A	Male Part #	Female Part #	Fig. #
.031 (.79)	.015 (.38)	.046 (1.17)	KMB020-165G	KMD020-210TG	1
.031 (.79)	.015 (.38)	.046 (1.17)	KMB020-525G	KMD020-210TG	2
.031 (.79)	.031 (.79)	.062 (1.57)	KMB020-165G	KMD020-85TG	1
.031 (.79)	.031 (.79)	.062 (1.57)	KMB020-525G	KMD020-85TG	2
.031 (.79)	.031 (.79)	.062 (1.57)	KMB020-165G	KMD020-176TG	1
.031 (.79)	.031 (.79)	.062 (1.57)	KMB020-525G	KMD020-176TG	2
.070 (1.78)	.015 (.38)	.085 (2.16)	KMB020-321G	KMD020-210TG	1
.085 (2.16)	.015 (.38)	.100 (2.54)	KMB020-322G	KMD020-210TG	1
.070 (1.78)	.031 (.79)	.101 (2.57)	KMB020-321G	KMD020-85TG	1
.070 (1.78)	.031 (.79)	.101 (2.57)	KMB020-321G	KMD020-176TG	1
.085 (2.16)	.031 (.79)	.116 (2.95)	KMB020-322G	KMD020-85TG	1
.085 (2.16)	.031 (.79)	.116 (2.95)	KMB020-322G	KMD020-176TG	1
.031 (.79)	.155 (3.94)	.186 (4.72)	KMB020-165TG	KMD020-95TG	1
.031 (.79)	.155 (3.94)	.186 (4.72)	KMB020-525TG	KMD020-95TG	2
.070 (1.78)	.155 (3.94)	.225 (5.72)	KMB020-321G	KMD020-95TG	1
.085 (2.16)	.155 (3.94)	.240 (6.10)	KMB020-322G	KMD020-95TG	1

20PositionDualRowPartNumbersShown
ForAdditionalOrderingInformationSeePage56

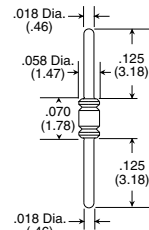
Required "A" dimension is not shown consult factory.

Male Terminal Information

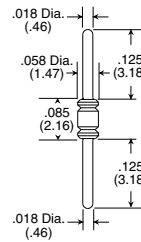
Type-165



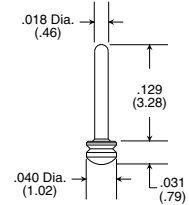
Type-339



Type-340



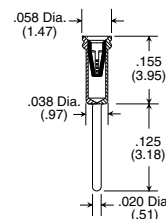
Type-525



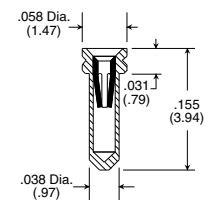
Board to Board

Female Terminal Information

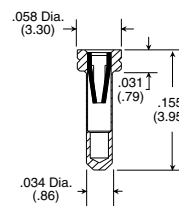
Type-95



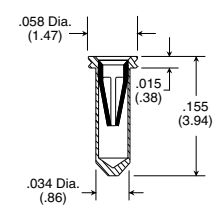
Type-85



Type-176



Type-210



Additional terminal types available on standard terminal types.

Additional terminal types available.
See terminal section for detailed terminal information.