

List of "SFW\_\_R-1/2STAE5LF" customer document

DOCUMENT NO.	LIST
10100523(SHEET1)	DOCUMENT LIST
10100523(SHEET2)	CAT.NO.TABLE FOR 1mm SPACING SMT CONNECTOR (SFW__R-1/2STA__LF)
10100523(SHEET3)	1mm SPACING SMT CONNECTOR (SFW__R-1STA_LF)
10100523(SHEET4)	1mm SPACING SMT CONNECTOR (SFW__R-2STA_LF)
10100523(SHEET5)	CAT.NO.TABLE FOR PLASTIC TAPE PACKAGED 1mm SPACING SMT CONNECTOR (SFW__R-1/2STAE5LF)
10100523(SHEET6)	PLASTIC TAPE PACKAGED 1mm SPACING SMT CONNECTOR (SFW__R-1STAE5LF)
10100523(SHEET7)	PLASTIC TAPE PACKAGED 1mm SPACING SMT CONNECTOR (SFW__R-2STAE5LF)
10100523(SHEET8)	RECOMMENDED CABLE (FPC) (SFW__R-1/2STA_)
SC-SFW14	PRODUCT SPECIFICATION
GS-20-129	HANDLING PROCEDURES



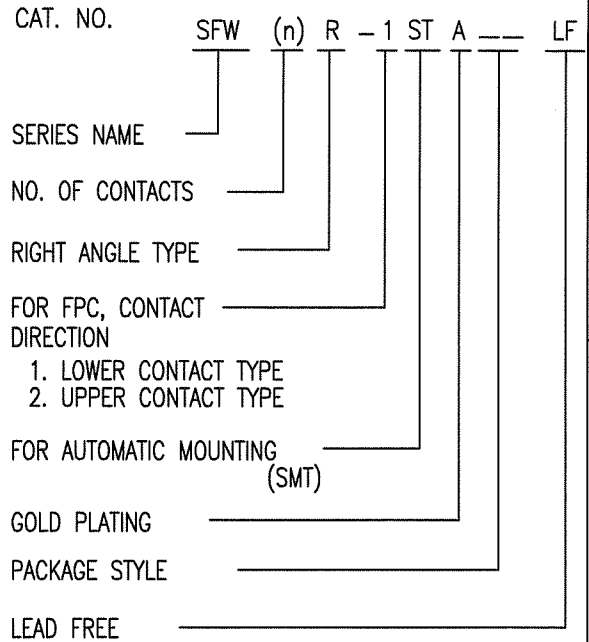
FCIconnect.com

Copyright FCI.

mat'l. code				surface 58 <input checked="" type="checkbox"/> ISO 1302				tolerance ISO 406 ISO 1101				projection				product family 58RF				CODE JP					
ltr		ecn no		dr		date		tolerances unless otherwise specified								title									
A		S09-0120		DGOH		09-04-17		angles				linear				mm				1mm SPACING SMT CONNECTOR DOCUMENT LIST					
B		J09-0380		M.Y		2009-10-27										scale X				(Cat. No. : SFW__R-1/2STAE5LF)					
								dr M. YAMASHITA 2009-10-27				FCI				dwg no				sheet 1 of 8		size			
								engr M. YAMASHITA 2009-10-27								10100523				A4					
								chr S. Wital 2009-10-27								type				Product		Customer Drawing			
								appd S. Daclaud 2009-10-27																	
sheet index		revision sheet		B		B		B		B		B		B		B		B		B		Rev. B			
				1		2		3		4		5		6		7		8							

CAT. NO. & DIMENSIONS

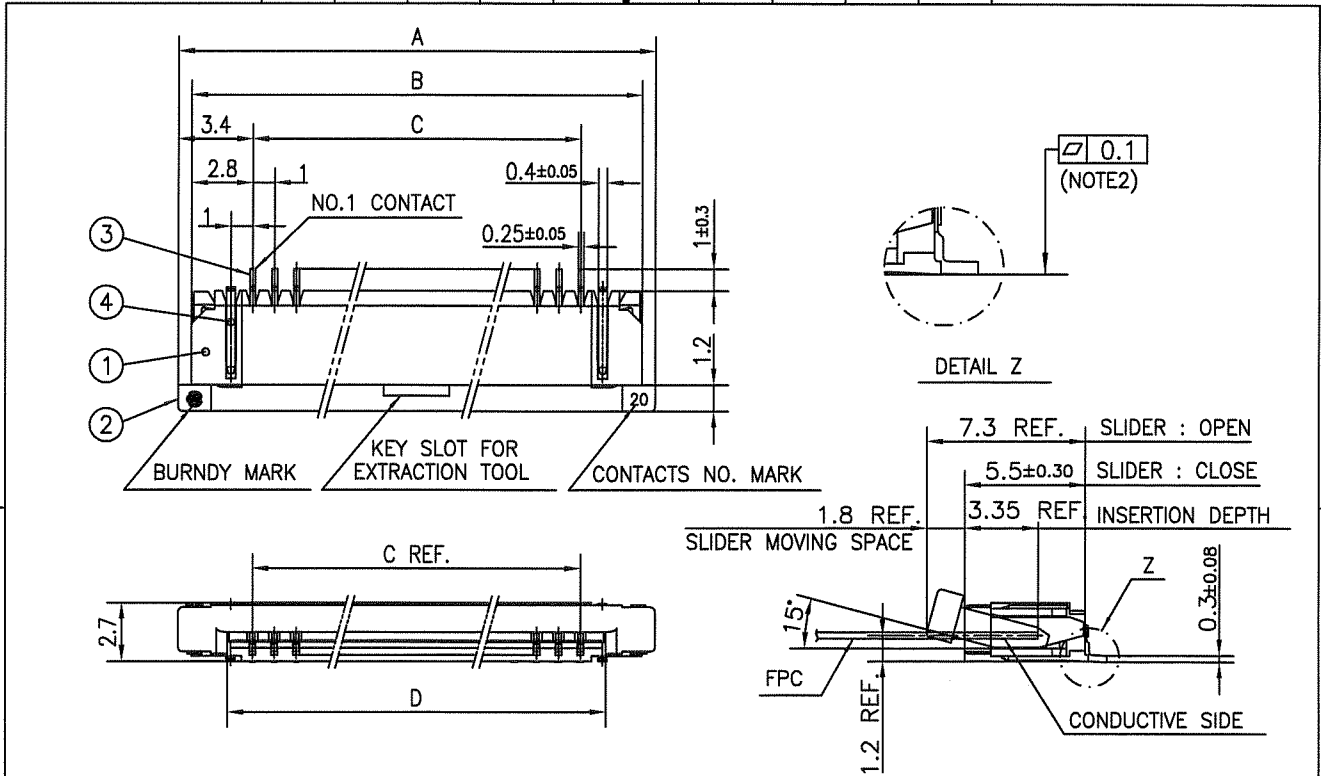
NO. OF CONTACTS (n)	CAT. NO.	DIMENSIONS (NOTE2)			
		A ± 0.2	B ± 0.2	C ± 0.2	D ± 0.1
4	SFW4R-1/2STA__LF	9.8	8.6	3.0	5.3
5	SFW5R-1/2STA__LF	10.8	9.6	4.0	6.3
6	SFW6R-1/2STA__LF	11.8	10.6	5.0	7.3
7	SFW7R-1/2STA__LF	12.8	11.6	6.0	8.3
8	SFW8R-1/2STA__LF	13.8	12.6	7.0	9.3
9	SFW9R-1/2STA__LF	14.8	13.6	8.0	10.3
10	SFW10R-1/2STA__LF	15.8	14.6	9.0	11.3
11	SFW11R-1/2STA__LF	16.8	15.6	10.0	12.3
12	SFW12R-1/2STA__LF	17.8	16.6	11.0	13.3
13	SFW13R-1/2STA__LF	18.8	17.6	12.0	14.3
14	SFW14R-1/2STA__LF	19.8	18.6	13.0	15.3
15	SFW15R-1/2STA__LF	20.8	19.6	14.0	16.3
16	SFW16R-1/2STA__LF	21.8	20.6	15.0	17.3
17	SFW17R-1/2STA__LF	22.8	21.6	16.0	18.3
18	SFW18R-1/2STA__LF	23.8	22.6	17.0	19.3
19	SFW19R-1/2STA__LF	24.8	23.6	18.0	20.3
20	SFW20R-1/2STA__LF	25.8	24.6	19.0	21.3
21	SFW21R-1/2STA__LF	26.8	25.6	20.0	22.3
22	SFW22R-1/2STA__LF	27.8	26.6	21.0	23.3
23	SFW23R-1/2STA__LF	28.8	27.6	22.0	24.3
24	SFW24R-1/2STA__LF	29.8	28.6	23.0	25.3
25	SFW25R-1/2STA__LF	30.8	29.6	24.0	26.3
26	SFW26R-1/2STA__LF	31.8	30.6	25.0	27.3
27	SFW27R-1/2STA__LF	32.8	31.6	26.0	28.3
28	SFW28R-1/2STA__LF	33.8	32.6	27.0	29.3
29	SFW29R-1/2STA__LF	34.8	33.6	28.0	30.3
30	SFW30R-1/2STA__LF	35.8	34.6	29.0	31.3



NOTES

1. THIS PRODUCT IS THE CONNECTOR USED FOR FPC AND COPES WITH AUTOMATIC MOUNTING (SMT).
2. SEE PART DRAWINGS FOR DIMENSIONS A~D.

mat'l. code		surface 58 / tolerance ISO 1302		tolerance ISO 406 / ISO 1101		projection		product family 58RF		CODE JP	
ltr		ecn no		dr		date		title		CAT NO. TABLE FOR 1mm SPACING SMT CONNECTOR (Cat. No. SFW__R-1/2STA__LF)	
B								mm		scale X	
sheet index		revision sheet		dr		engr		chr		appd	
				M. Yamashita 2008-10-27		M. Yamashita 2009-10-27		S. W. 2008-10-27		J. Chidambaram 2009-10-27	
								FCI		dwg no 10100523 sheet 2 of 8 size A4	
										type Product Customer Drawing	
										Rev. B	



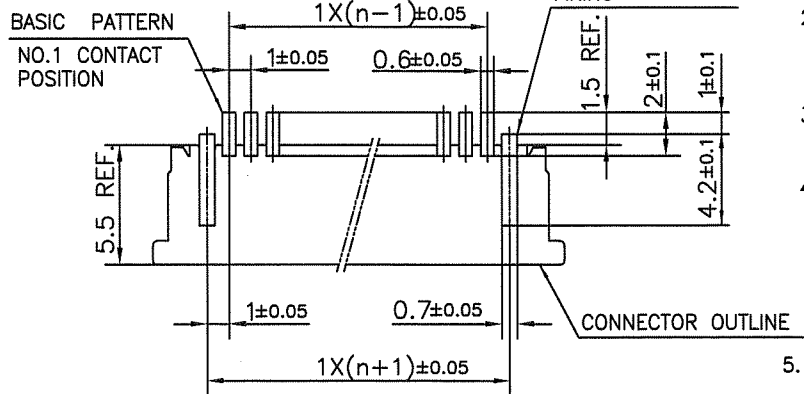
PT. NO.	PARTS NAME	MATERIAL	Q'TY	NOTE
1	HOUSING	PPS RESIN GLASS REINFORCED (UL94V-0)	1	COLOR : BROWN
2	SLIDER		1	COLOR : BLACK
3	CONTACT	PHOSPHOR BRONZE	n	CONTACT AREA : GOLD TARMINAL AREA : TIN
4	MOUNTING PLATE		2	PLATING : TIN

n : NO. OF CONTACTS

NOTES

1. THIS PRODUCT IS THE CONNECTOR USED FOR FPC AND COPES WITH AUTOMATIC MOUNTING (SMT).
2. FLATNESS FOR CONTACT TERMINAL HOUSING MUST BE WITHIN TOLERANCE IN Z PORTION DETAILED DRAWING.
3. THIS PRODUCT IS LOWER CONTACT TYPE CONNECTOR.
4. THIS PRODUCT MEETS EUROPEAN UNION DIRECTIVES AND OTHER?COUNTRY REGULATIONS AS DESCRIBED IN GS-22-008

RECOMMENDED PC BOARD LAYOUT (COMPONENT SIDE)



5. THE HOUSING WILL WITHSTAND EXPOSURE TO 260°C PEAK TEMPERATURE FOR 10 SECONDS IN A REFLOW SOLDERING OVEN.

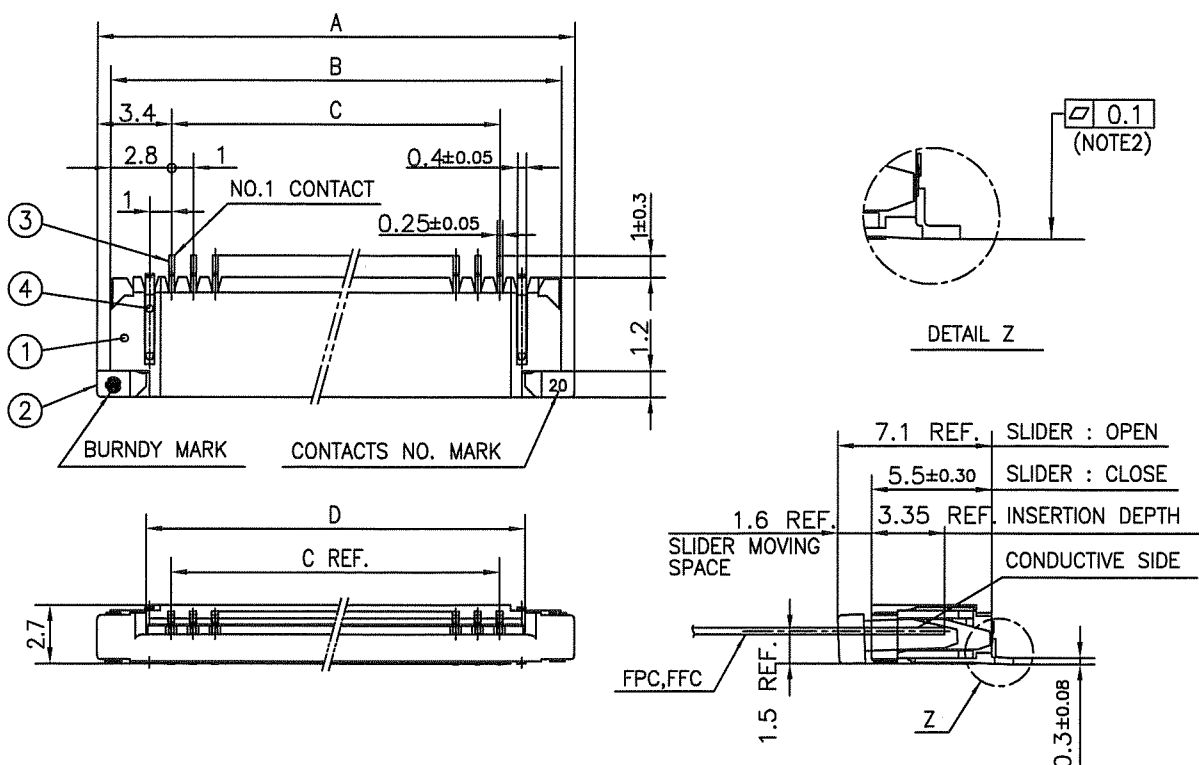
mat'l. code		surface 58		tolerance ISO 1302		projection		product family 58RF		CODE JP	
ltr		ecn no		dr		date		title		1mm SPACING SMT CONNECTOR (Cat. No. SFW__R-1STA__LF)	
B								mm			
				angles		linear ±0.2		scale X			
				dr		M. YAMASHITA 2008-10-27		dwg no		sheet 3 of 8 size	
				enrg		M. YAMASHITA 2008-10-27		10100523		A4	
				chr		S. W. 2008-10-27		type		Product Customer Drawing	
				appd		S. W. 2008-10-27					
sheet index		revision sheet								Rev. B	



FCIconnect.com

Copyright FCI.





PT. NO.	PARTS NAME	MATERIAL	Q'TY	NOTE
1	HOUSING	PPS RESIN GLASS REINFORCED (UL94V-0)	1	COLOR : BROWN
2	SLIDER		1	COLOR : BLACK
3	CONTACT	PHOSPHOR BRONZE	n	CONTACT AREA : GOLD TARMINAL AREA : TIN
4	MOUNTING PLATE		2	PLATING : TIN

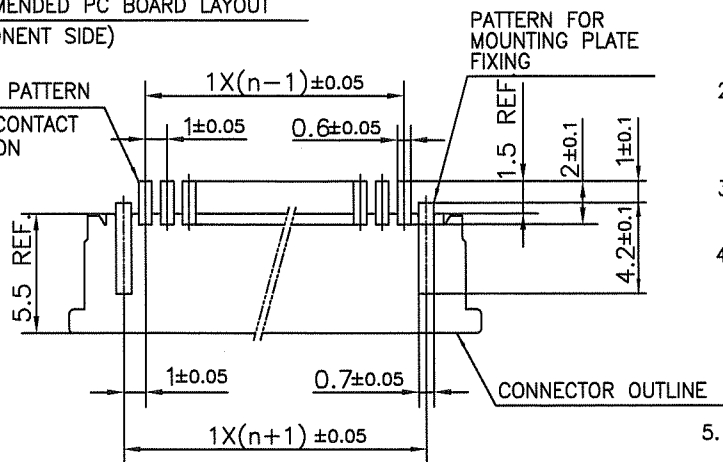
n : NO. OF CONTACTS

NOTES

1. THIS PRODUCT IS THE CONNECTOR USED FOR FPC AND COPES WITH AUTOMATIC MOUNTING (SMT).
2. FLATNESS FOR CONTACT TERMINAL HOUSING MUST BE WITHIN TOLERANCE IN Z PORTION DETAILED DRAWING.
3. THIS PRODUCT IS UPPER CONTACT TYPE CONNECTOR.
4. THIS PRODUCT MEETS EUROPEAN UNION DIRECTIVES AND OTHER?COUNTRY REGULATIONS AS DESCRIBED IN GS-22-008

RECOMMENDED PC BOARD LAYOUT (COMPONENT SIDE)

BASIC PATTERN NO.1 CONTACT POSITION



5. THE HOUSING WILL WITHSTAND EXPOSURE TO 260°C PEAK TEMPERATURE FOR 10 SECONDS IN A REFLOW SOLDERING OVEN.

mat'l. code		surface 58 / tolerance ISO 1302 ✓ / ISO 406 / ISO 1101		projection		product family 58RF		CODE JP	
ltr		ecn no		dr		date		tolerances unless otherwise specified	
B								±0.2	
				angles		linear		mm	
								scale X	
		dr		S. YAMASHITA		2009-10-27		product family	
		enrg		S. YAMASHITA		2009-10-27		sheet 4 of 8	
		chr		S. Yamashita		2009-10-27		size A4	
		appd		S. Yamashita		2009-10-27		10100523	
sheet index		revision sheet						type Product Customer Drawing	
								Rev. B	



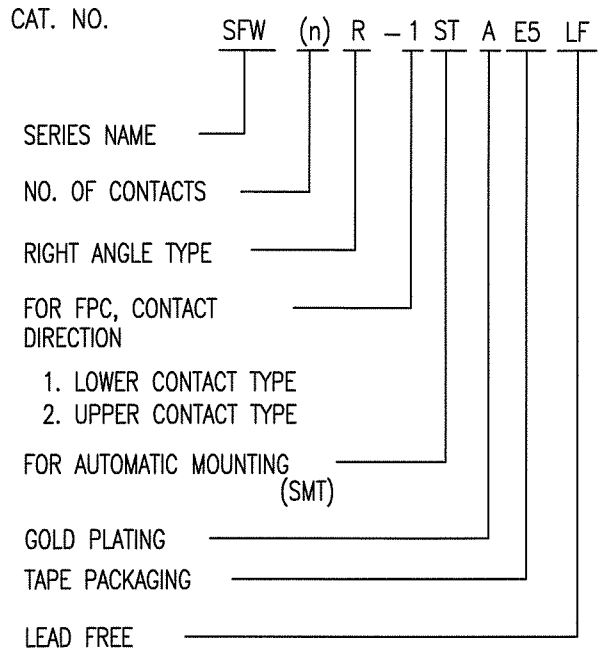
FCIconnect.com

Copyright FCI.



CAT. NO. & DIMENSIONS

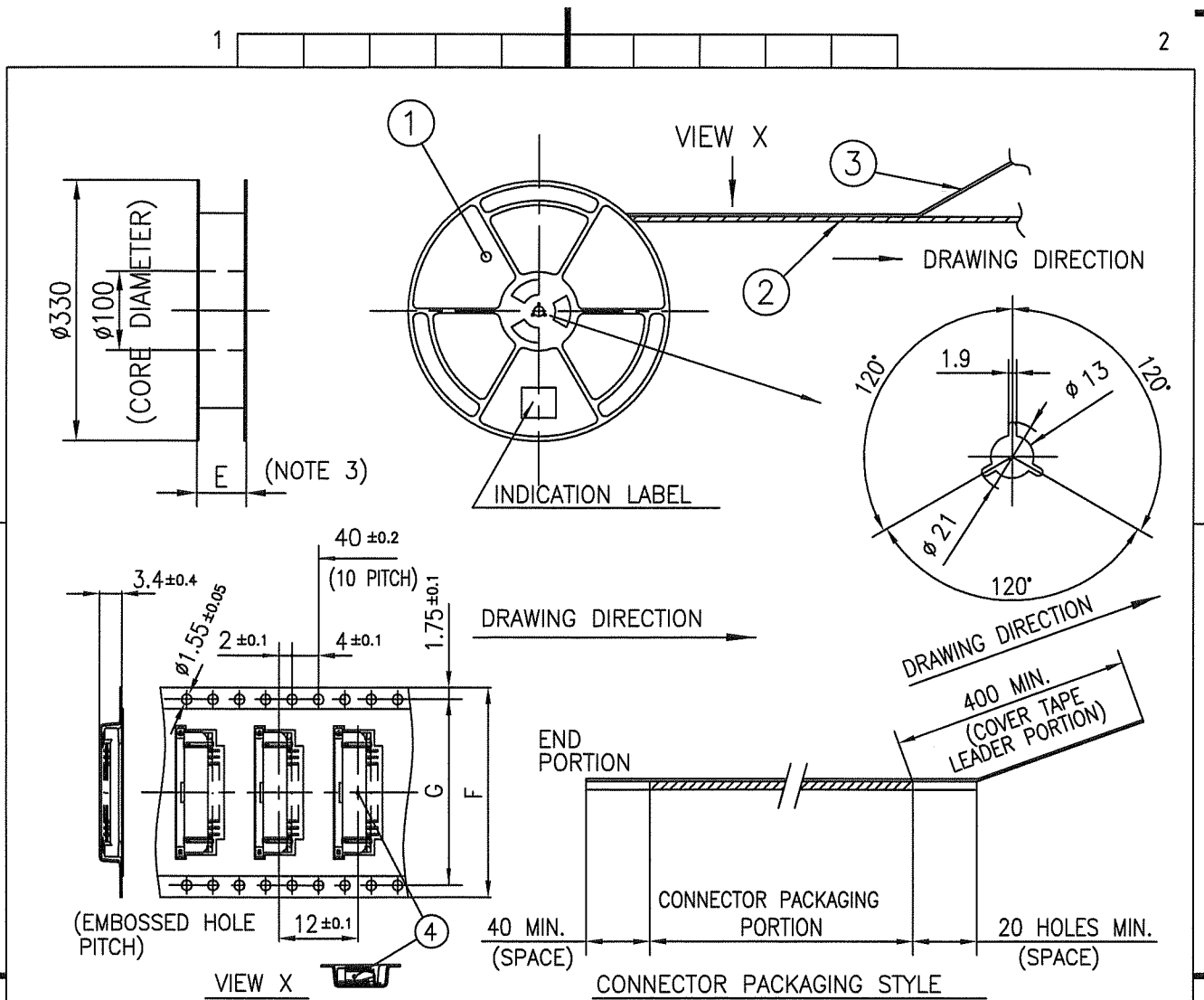
NO. OF CONTACTS (n)	CAT. NO. (NOTE2)	DIMENSIONS (NOTE3)		
		E MAX.	F ± 0.3	G ± 0.1
4	SFW4R-1/2STAE5LF	22.4	16	—
5	SFW5R-1/2STAE5LF	30.4	24	—
6	SFW6R-1/2STAE5LF	30.4	24	—
7	SFW7R-1/2STAE5LF	30.4	24	—
8	SFW8R-1/2STAE5LF	30.4	24	—
9	SFW9R-1/2STAE5LF	30.4	24	—
10	SFW10R-1/2STAE5LF	30.4	24	—
11	SFW11R-1/2STAE5LF	30.4	24	—
12	SFW12R-1/2STAE5LF	30.4	24	—
13	SFW13R-1/2STAE5LF	38.4	32	28.4
14	SFW14R-1/2STAE5LF	38.4	32	28.4
15	SFW15R-1/2STAE5LF	38.4	32	28.4
16	SFW16R-1/2STAE5LF	38.4	32	28.4
17	SFW17R-1/2STAE5LF	50.4	44	40.4
18	SFW18R-1/2STAE5LF	50.4	44	40.4
19	SFW19R-1/2STAE5LF	50.4	44	40.4
20	SFW20R-1/2STAE5LF	50.4	44	40.4
21	SFW21R-1/2STAE5LF	50.4	44	40.4
22	SFW22R-1/2STAE5LF	50.4	44	40.4
23	SFW23R-1/2STAE5LF	50.4	44	40.4
24	SFW24R-1/2STAE5LF	50.4	44	40.4
25	SFW25R-1/2STAE5LF	50.4	44	40.4
26	SFW26R-1/2STAE5LF	50.4	44	40.4
27	SFW27R-1/2STAE5LF	50.4	44	40.4
28	SFW28R-1/2STAE5LF	62.4	56	52.4
29	SFW29R-1/2STAE5LF	62.4	56	52.4
30	SFW30R-1/2STAE5LF	62.4	56	52.4



NOTES

1. THIS PRODUCT IS THE CONNECTOR USED FOR FPC AND COPES WITH AUTOMATIC MOUNTING (SMT).
2. THIS CATALOG NO. INDICATES PLASTIC TAPE PACKAGED CONNECTOR.
3. SEE PART DRAWINGS FOR DIMENSIONS E~G.

mat'l. code		surface 58/ISO 1302 ✓		tolerance ISO 406 ISO 1101		projection		product family 58RF		CODE JP	
ltr		ecn no		dr		date		tolerances unless otherwise specified		title	
B								angles linear		CAT NO. TABLE FOR PLASTIC TAPE PACKAGED 1mm SPACING SMT CONNECTOR (Cat. No. SFW__R-1/2STAE5LF)	
								mm		scale X	
				dr		M. YAMASHITA 2008-10-27		FCCI		dwg no sheet 5 of 8 size	
				enrg		M. YAMASHITA 2008-10-27				10100523 A4	
				chr		S. Vitale 2008-10-27					
				appd		S. Chudam 2008-10-27					
sheet index		revision sheet								type Product Customer Drawing	
										Rev. B	

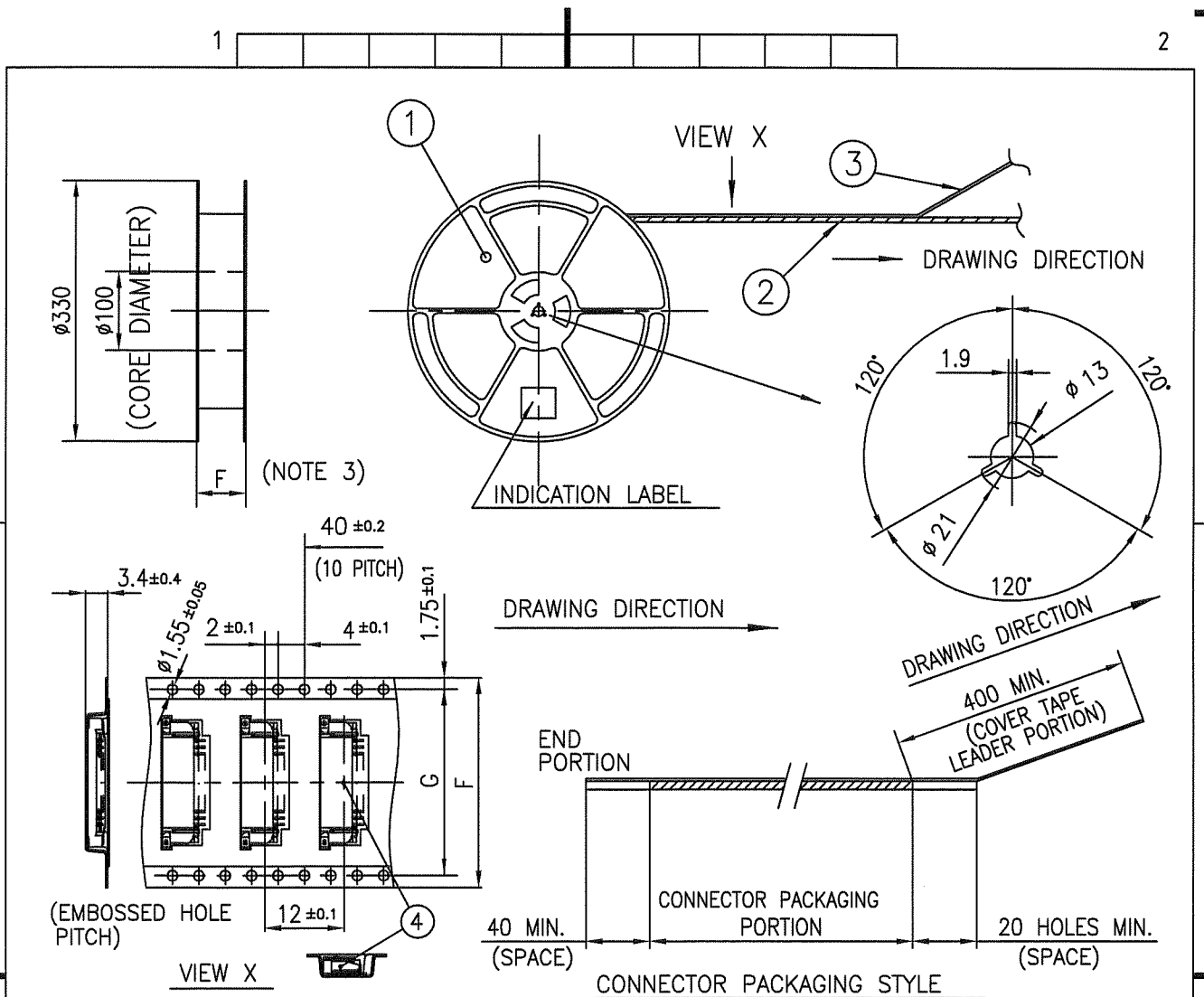


PT. NO.	PARTS NAME	CAT. NO.	MATERIAL	Q'TY	NOTE
1	REEL	_____	POLYSTYRENE	1	COLOR : WHITE or BLACK
2	PLASTIC (EMBOSS) TAPE	_____	PET	_____	COLOR : TRANSPARENCY
3	COVER	_____	POLYESTER	_____	COLOR : TRANSPARENCY
4	CONNECTOR	SFW__R-1STA__LF	SEE ATTACHED DWG.	1500	LOWER CONTACT TYPE

NOTES

- THIS IS PLASTIC TAPE PACKAGED CONNECTOR USED FOR FPC AND COPES WITH AUTOMATIC MOUNTING (SMT).
- SEE JIS C 0806 (PACKING OF ELECTRONIC COMPONENTS ON CONTINUOUS TAPES (SURFACE MOUNTING DEVICES)) FOR SHAPE AND DIMENSIONS OF PLASTIC (EMBOSS) TAPE AND REEL.
- E DIMENSION IS PORTION OF THE CORE.

mat'l. code		surface 58 ✓ ISO 1302		tolerance ISO 406 ISO 1101		projection mm		product family 58RF		CODE JP	
ltr		ecn no		dr		date		title PLASTIC TAPE PACKAGED 1mm SPACING SMT CONNECTOR (Cat. No. SFW__R-1STAE5LF)		dwg no 10100523	
B								scale X		sheet 6 of 8 size A4	
		angles ±5°		linear ±5				FCI		type Product Customer Drawing	
sheet index		revision sheet								Rev. B	



PT. NO.	PARTS NAME	CAT. NO.	MATERIAL	Q'TY	NOTE
1	REEL	_____	POLYSTYRENE	1	COLOR : WHITE or BLACK
2	PLASTIC (EMBOSS) TAPE	_____	PET	_____	COLOR : TRANSPARENCY
3	COVER	_____	POLYESTER	_____	COLOR : TRANSPARENCY
4	CONNECTOR	SFW__R-2STA_LF	SEE ATTACHED DWG.	1500	UPPER CONTACT TYPE

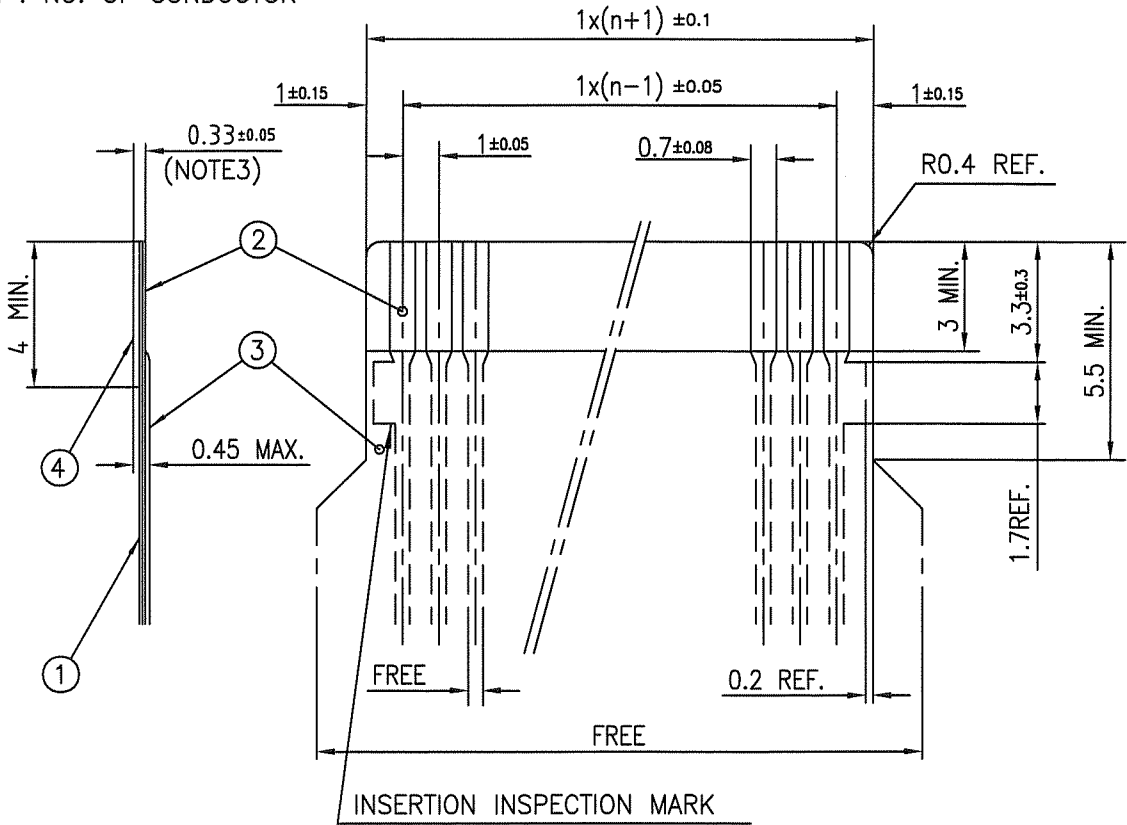
NOTES

- THIS IS PLASTIC TAPE PACKAGED CONNECTOR USED FOR FPC AND CYPES WITH AUTOMATIC MOUNTING (SMT).
- SEE JIS C 0806 (PACKING OF ELECTRONIC COMPONENTS ON CONTINUOUS TAPES (SURFACE MOUNTING DEVICES)) FOR SHAPE AND DIMENSIONS OF PLASTIC (EMBOSS) TAPE AND REEL.
- E DIMENSION IS PORTION OF THE CORE.

mat'l. code		surface 58 / tolerance ISO 1302 / ISO 406 / ISO 1101		projection		product family 58RF		CODE JP	
ltr		ecn no		dr		date		title	
B								PLASTIC TAPE PACKAGED 1mm SPACING SMT CONNECTOR (Cat. No. SFW__R-2STAE5LF)	
		angles		linear		±5		mm	
		±5°						scale X	
		dr		enr		chr		appd	
		M. YAMASITA 2007-10-27		M. YAMASITA 2007-10-27		S. Withler 2009-10-27		S. Dindam 2007-10-27	
								FCI	
								dwg no 10100523	
								sheet 7 of 8 size A4	
								type Product Customer Drawing	
sheet index		revision sheet						Rev. B	

RECOMMENDED CABLE (FPC)

n : NO. OF CONDUCTOR



PT. NO.	PARTS NAME	MATERIAL	THICKNESS (um)
1	BASE FILM	POLYIMIDE OR POLYESTER OR EQUAL	25
2	CONDUCTOR	COPPER FOIL (PLATING : Ni UNDER PLATING GOLD0.5um MIN.)	35
3	OVERLAY	POLYIMIDE OR POLYESTER OR EQUAL	—
4	SUPPORTING TAPE	POLYESTER OR POLYIMIDE OR EQUAL	188

- NOTES
1. NO BURR AT EACH PORTION.
  2. NO PEELING IN COMMON USE.
  3. TOTAL THICKNESS LIMIT OF EACH MATERIAL (INCLUDING ADHESIVE AGENT) IS SPECIFIED.

mat'l. code		surface ISO 1302 58 ✓		tolerance ISO 406 ISO 1101		projection		product family 58RF		CODE JP	
ltr B		ecn no		dr		date		title		RECOMMENDED CABLE (Cat. No. SFW__R-1/2STA_)	
				angles		linear		mm		scale X	
				dr		2009-10-27		dwg no		sheet 8 of 8 size A4	
				enr		2007-10-27		10100523			
				chr		2009-10-27		type		Product Customer Drawing	
				appd		2009-10-27					
sheet index		revision sheet								Rev. B	