

## FEATURES AND SPECIFICATIONS

### Features and Benefits

- Sizes 2 to 15 circuits
- Mating headers must be long enough to accommodate board thickness
- Polarizing key available
- Available without hooks
- Various tail lengths available

### Reference Information

Packaging: Bag  
 UL File No.: E29179  
 CSA File No.: LR19980  
 Mates With: Molex KK 3.96mm (.156") locking headers  
 or 1.14mm (.045") pins  
 Designed In: Inches

### Electrical

Voltage: 250V AC  
 Current: 5.0A max.\*  
 Contact Resistance: 6mΩ max.  
 Dielectric Withstanding Voltage: 1500V AC  
 Insulation Resistance: 50K MΩ min.

### Physical

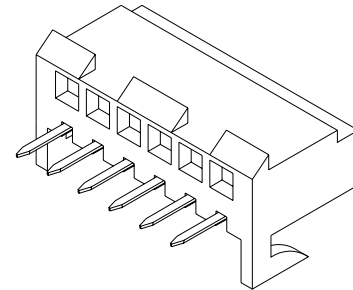
Housing: Nylon, UL 94V-2  
 (see 41815 for polyester, UL 94V-0)  
 Contact: Brass or Phosphor Bronze  
 Plating: See Table  
 Operating Temperature: 0 to +75°C

**molex®** 3.96mm (.156") Pitch  
**KK®**

**PC Board Connector**

**2145/3215**

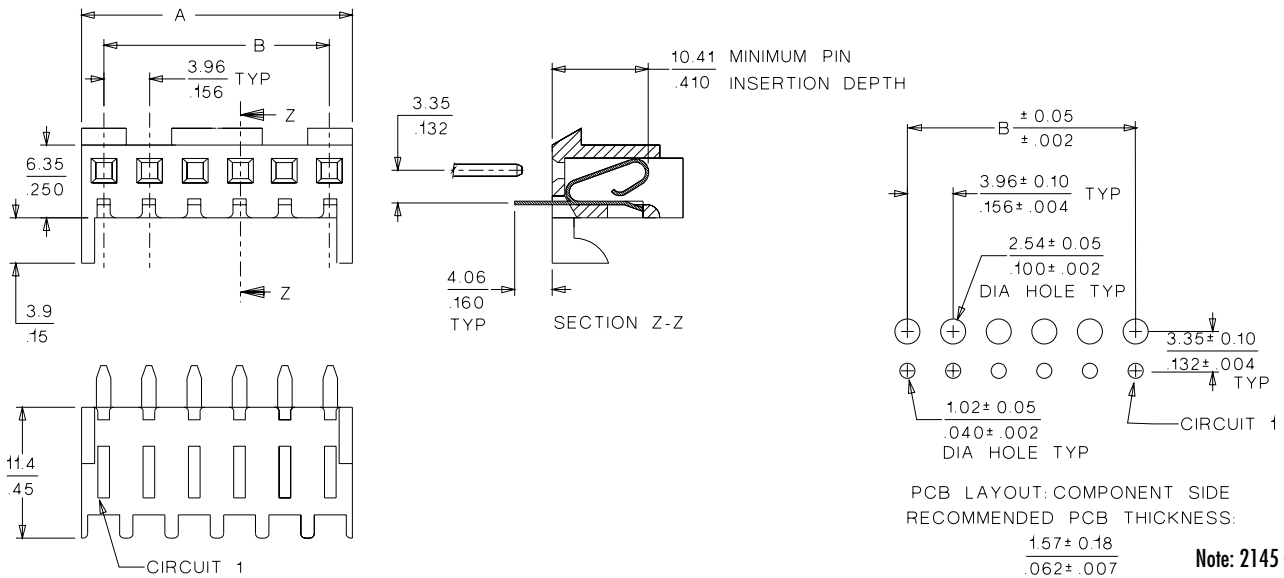
**Bottom Entry**



**D**

**3.00 to 7.92mm (.118 to .312") Pitch**

## CATALOG DRAWING (FOR REFERENCE ONLY)



## ORDERING INFORMATION AND DIMENSIONS

Circuits	Order No.				Dimension		Center Hook(s) Location
	2145		3215†		A	B	
2	• 09-62-6024	• 09-62-3022			7.82 (.308)	3.96 (.156)	
3	• 09-62-6034	• 09-62-3032	26-11-6035	26-29-1031	11.79 (.464)	7.92 (.312)	
4	• 09-62-6044	• 09-62-3042	26-11-6045	26-29-1041	15.75 (.620)	11.89 (.468)	
5	• 09-62-6054	• 09-62-3052	26-11-6055	26-29-1051	19.71 (.776)	15.85 (.624)	
6	• 09-62-6064	• 09-62-3062	26-11-6065	26-29-1061	23.07 (.932)	19.81 (.780)	
7	• 09-62-6074	• 09-62-3072	26-11-6075	26-29-1071	27.64 (1.088)	23.77 (.936)	
8	• 09-62-6084	• 09-62-3082	26-11-6085	26-29-1081	31.60 (1.244)	27.74 (1.092)	(1) between circuits 4-5
9	• 09-62-6094	• 09-62-3092	26-11-6095	26-29-1091	35.56 (1.400)	31.70 (1.248)	(1) between circuits 4-5
10	• 09-62-6104	• 09-62-3102	26-11-6105	26-29-1101	39.52 (1.556)	35.66 (1.404)	(1) between circuits 5-6
11	• 09-62-6114	• 09-62-3112		26-29-1111	43.48 (1.712)	39.62 (1.560)	
12	• 09-62-6124	• 09-62-3122	26-11-6125	26-29-1121	47.45 (1.868)	43.59 (1.716)	(2) between circuits 4-5 and 8-9
13	• 09-62-6134	• 09-62-3132		26-29-1131	51.41 (2.024)	47.55 (1.872)	
14	• 09-62-6144	• 09-62-3142		26-29-1141	55.37 (2.180)	51.51 (2.028)	
15	• 09-62-6154	• 09-62-3152	26-11-6155	26-29-1151	59.33 (2.336)	55.47 (2.184)	(2) between circuits 5-6 and 10-11

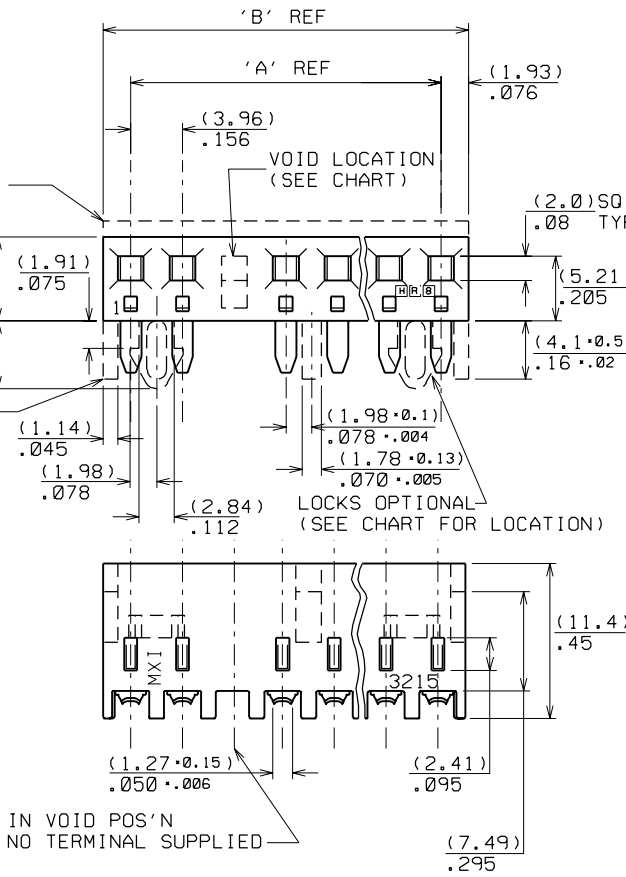
• US Standard Product, available through Molex franchised distributors

\* Dependent upon PC board

† Preferred version in Europe and the Far East

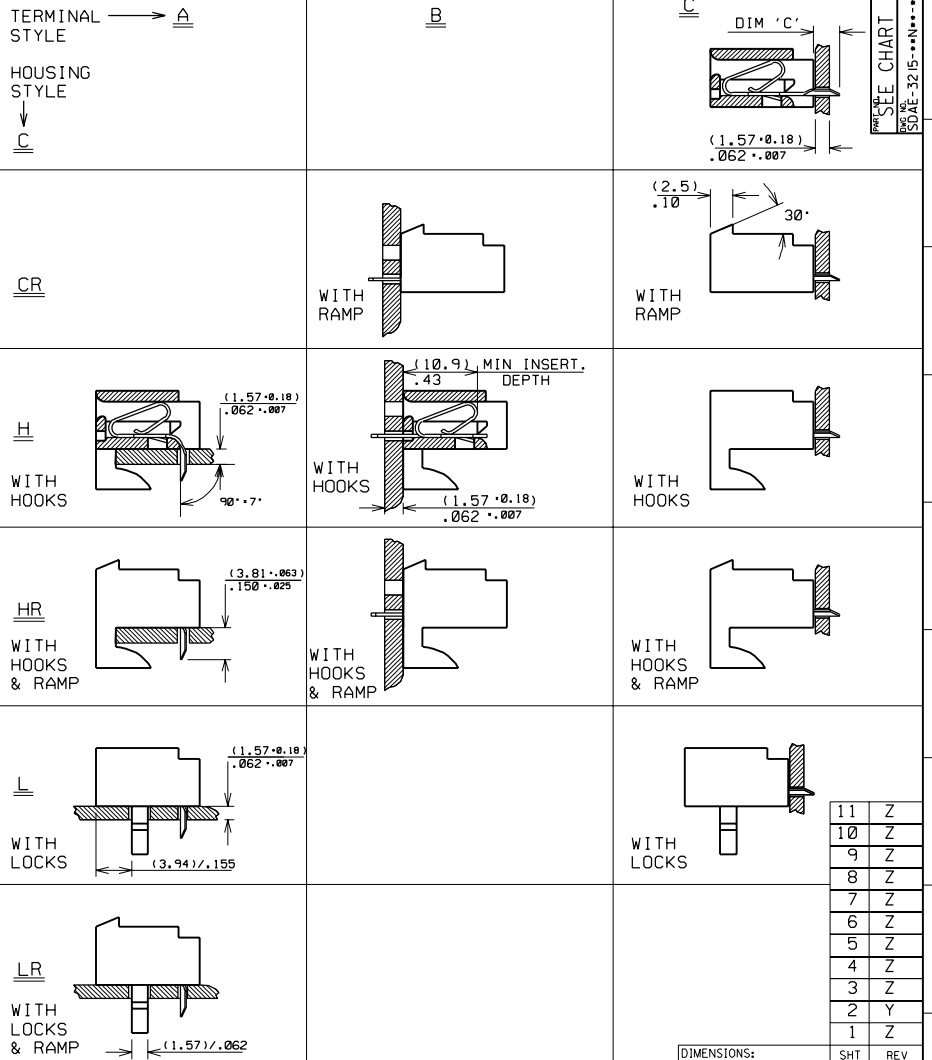
20	(75.29±0.41) 2.964±.016	(79.15±0.51) 3.116±.020
19	(71.32±0.41) 2.809±.016	(75.18±0.51) 2.960±.020
18	(67.36±0.36) 2.652±.014	(71.22±0.46) 2.804±.018
17	(63.40±0.36) 2.496±.014	(67.26±0.46) 2.648±.018
16	(59.44±0.36) 2.340±.014	(63.29±0.46) 2.492±.018
15	(55.47±0.3) 2.184±.012	(59.33±0.41) 2.336±.016
14	(51.51±0.3) 2.028±.012	(55.37±0.41) 2.180±.016
13	(47.55±0.30) 1.872±.012	(51.41±0.41) 2.024±.016
12	(43.59±0.25) 1.716±.010	(47.45±0.36) 1.868±.014
11	(39.62±0.25) 1.560±.010	(43.48±0.36) 1.712±.014
10	(35.66±0.25) 1.404±.010	(39.52±0.3) 1.556±.012
9	(31.70±0.18) 1.248±.007	(35.56±0.3) 1.400±.012
8	(27.74±0.18) 1.092±.007	(31.60±0.3) 1.244±.012
7	(23.77±0.18) .936±.007	(27.64±0.3) 1.088±.012
6	(19.81±0.13) .780±.005	(23.67±0.25) .932±.011
5	(15.85±0.13) .624±.005	(19.71±0.25) .776±.010
4	(11.89±0.13) .468±.005	(15.75±0.25) .620±.010
3	(7.92±0.13) .312±.005	(11.79±0.25) .464±.010

NO OF CCTS	DIM. 'A'	DIM. 'B'
11		Z
10		Z
9		Z
8		Z
7		Z
6		Z
5		Z
4		Z
3		Z
2		Y
1		Z



NOTES:

1. THESE ASSEMBLIES STACKABLE END TO END ON (3.96)±.156 CENTRE TO CENTRE PROGRESSION.
2. FOR CHARTS & PANEL DRILLING DETAILS SEE SHEET 2 AND SUBSEQUENT SHEETS.
3. TERMINAL PULL OUT FORCE- 4LBS MIN.
4. TERMINALS ARE LUBRICATED WITH MXI-3.
5. CONNECTORS FOR USE WITH (1.14)±.045 SQ. OR RD. PINS



UPDATED BORDER EC NO. E2001-0463 DRAWING INDRAK 24/10/00	QUALITY SYMBOLS MAJOR MINOR CRITICAL	GENERAL TOLERANCES: (UNLESS SPECIFIED)		SCALE 4 : 1	DESIGN UNITS mm INCH	THIRD ANGLE PROJECTION	DIMENSIONS: <input checked="" type="checkbox"/> mm <input type="checkbox"/> INCH <input type="checkbox"/> mm ONLY	SHT	REV
		4 PLACES ±0. ±.	3 PLACES ±0. ±.010	2 PLACES ±0.25 ±.014	1 PLACE ±0.36 ±.	ANGULAR: ± 1/2°	DRAWN BY & DATE G. HART 24/11/82	CHECKED BY & DATE M GOONEY 26/11/98	TITLE: CONNECTOR, K-K (3.96)±.156 WITH OR WITHOUT LOCKING WITH P.C. TAIL TERMINALS
REV	DESCRIPTION	DRAFT WHERE APPLICABLE MUST REMAIN WITHIN DIMENSIONS		CAD FILENAME SE32151.DGN	MATERIAL NO. SEE CHART	MOLEX INCORPORATED	DRAWING NO. SDAE-3215-••N••••	SHEET NO. 1 OF 1	

THIS DRAWING CONTAINS INFORMATION THAT IS PROPRIETARY TO MOLEX INCORPORATED AND SHOULD NOT BE USED WITHOUT WRITTEN PERMISSION.

13		12		11		10		9		8		7		6		5		4		3		2		1		
PART NO.	ENG NO.	NO. OF CCTS	LOCK RAMP	VOID CCT POS 'N	CENTRE HOOK LOCATED BETWEEN CCT NO'S	PART NO.	ENG NO.	NO. OF CCTS	LOCK RAMP	VOID CCT POS 'N	CENTRE HOOK LOCATED BETWEEN CCT NO'S	PART NO.	ENG NO.	NO. OF CCTS	LOCK RAMP	VOID CCT POS 'N	CENTRE HOOK LOCATED BETWEEN CCT NO'S	PART NO.	ENG NO.	NO. OF CCTS	LOCK RAMP	VOID CCT POS 'N	CENTRE HOOK LOCATED BETWEEN CCT NO'S	SEE CHART P.D. NO. SDAE-3215-••N•••••		
26-29-1032	AE-3215-CR3G2B	3	YES	NONE		26-29-1033	AE-3215-H3G2B	3	NO	NONE	---	26-29-1031	AE-3215-HR3G2B	3	YES	NONE	---									
↑ -1042	↑ -CR4G2B	4	↑	↑		↑ -1043	↑ -H4G2B	4	↑	↑	---	↑ -1041	↑ -HR4G2B	4	↑	↑	---									
-1052	-CR5G2B	5				-1053	-H5G2B	5			---	-1051	-HR5G2B	5			---									
-1062	-CR6G2B	6				-1063	-H6G2B	6			---	-1061	-HR6G2B	6			---									
-1072	-CR7G2B	7				-1073	-H7G2B	7			---	-1071	-HR7G2B	7			---									
-1082	-CR8G2B	8				-1083	-H8G2B	8			4&5	-1081	-HR8G2B	8			4&5									
-1092	-CR9G2B	9				-1093	-H9G2B	9			4&5	-1091	-HR9G2B	9			4&5									
-1102	-CR10G2B	10				-1103	-H10G2B	10			5&6	-1101	-HR10G2B	10			5&6									
-1112	-CR11G2B	11				-1113	-H11G2B	11			5&6	-1111	-HR11G2B	11			5&6									
-1122	-CR12G2B	12				-1123	-H12G2B	12			4&5 8&9	-1121	-HR12G2B	12			4&5 8&9									
-1132	-CR13G2B	13				-1133	-H13G2B	13			4&5 9&10	-1131	-HR13G2B	13			4&5 9&10									
-1142	-CR14G2B	14				-1143	-H14G2B	14			5&6 9&10	-1141	-HR14G2B	14			5&6 9&10									
-1152	-CR15G2B	15				-1153	-H15G2B	15			5&6 10&11	-1151	-HR15G2B	15			5&6 10&11									
-1162	-CR16G2B	16				-1163	-H16G2B	16			6&7 11&12	-1161	-HR16G2B	16			6&7 11&12									
-1172	-CR17G2B	17				-1173	-H17G2B	17			6&7 11&12	-1171	-HR17G2B	17			6&7 11&12									
-1182	-CR18G2B	18				-1183	-H18G2B	18			6&7 10&11 15&16	-1181	-HR18G2B	18			6&7 10&11 15&16									
↓ -1192	↓ -CR19G2B	19	↓	↓		↓ -1193	↓ -H19G2B	19	↓	↓	5&6 10&11 15&16	↓ -1191	↓ -HR19G2B	19	↓	↓	5&6 10&11 15&16									
26-29-1202	AE-3215-CR20G2B	20	YES	NONE		26-29-1203	AE-3215-H20G2B	20	NO	NONE	5&6 10&11 15&16	26-29-1201	AE-3215-HR20G2B	20	YES	NONE	5&6 10&11 15&16									

HOUSING,  
STYLE - CR

TERMINAL,  
STYLE - B  
DRILLING DETAIL 'B'  
SEE SHEET 2

HOUSING,  
STYLE - H

TERMINAL,  
STYLE - B  
DRILLING DETAIL 'B'

HOUSING,  
STYLE - HR

TERMINAL,  
STYLE - B  
DRILLING DETAIL 'B'

**NOTES:**

1. TERMINAL MUST MEET MOLEX SOLDERABILITY SPEC. NO. 152.

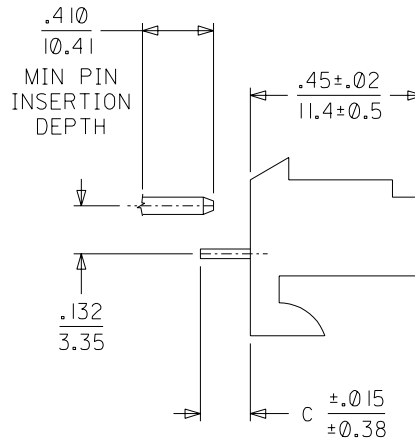
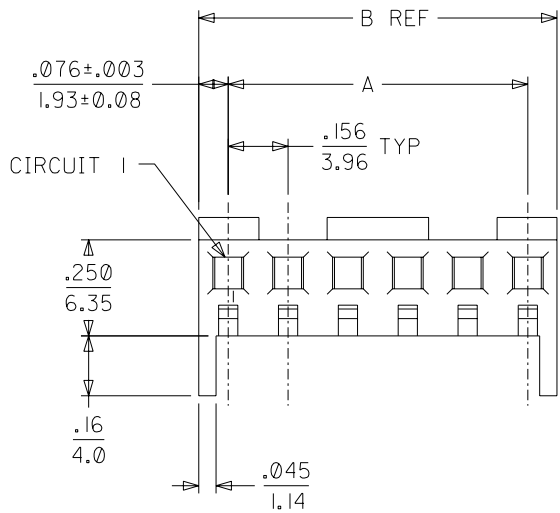
**MATERIAL:**

HOUSING - NYLON, 94V-2, COLOUR - NATURAL

TERMINAL - PHOS. BR. PLATING -  $\frac{0.0004}{0.00015} / \frac{0.0006}{0.00025}$  GOLD OVER  $\frac{0.0008}{0.0003} / \frac{0.0015}{0.0006}$  NICKLE

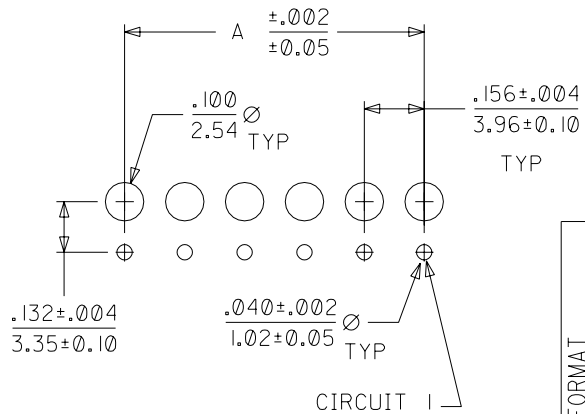
IN CONTCAT AREA WITH  $\frac{0.0013}{0.00005}$  MIN. GOLD FLASH OVERALL

SEE SHEET 1 P.D. NO. SDAE-3215-••N•••••	EG. NO. DRWING: 24/1000	QUALITY SYMBOLS MAJOR CRITICAL	GENERAL TOLERANCES: (UNLESS SPECIFIED)		SCALE: 1:1	DESIGN UNITS: mm	THIRD ANGLE PROJECTION	DIMENSIONS: <input checked="" type="checkbox"/> mm <input type="checkbox"/> INCH <input type="checkbox"/> mm ONLY	SHT	REV	
	CHK: / / / /		4 PLACES ±0. ±.	3 PLACES ±0. ±.	2 PLACES ±0. ±.	1 PLACE ±0. ±.			DRAWN BY & DATE G. HART 24/11/82	TITLE: CONNECTOR, K-K (3.96) / .156 WITH OR WITHOUT LOCKING WITH P.C. TAIL TERMINALS	REVISE ON CAD ONLY
	APPR: / / / /		3 PLACES ±0. ±.	2 PLACES ±0. ±.	1 PLACE ±0. ±.	CHECKED BY & DATE M. GOONEY 26/11/98					
	REV: / / / /		ANGULAR: ± 1/2°		APPROVED BY & DATE MWILHITE 26/11/98	CAD FILENAME SE32158.DGN			MATERIAL NO. SEE CHART		DRAWING NO. SDAE-3215-••N•••••
	DRAFT WHERE APPLICABLE MUST REMAIN WITHIN DIMENSIONS		THIS DRAWING CONTAINS INFORMATION THAT IS PROPRIETARY TO MOLEX INCORPORATED AND SHOULD NOT BE USED WITHOUT WRITTEN PERMISSION.		SIZE C						



NOTES:

- HOUSING MATERIAL: NYLON, UL 94V-2
- CATALOG PLATINGS:  
 (102) = OVERALL TIN - 200 M.I. MIN OVER COPPER  
 (567) = SELECT GOLD - 15 M.I. MIN WITH  
 SELECT TIN/LEAD - 100 M.I. MIN BOTH  
 OVER NICKEL
- PRODUCT SPECIFICATION: PS-08-50
- SOLDERABILITY SPECIFICATION: SMES-152
- RIGHT ANGLE OPTIONS SEE DRAWING SDA-2145-001
- TOP ENTRY OPTIONS SEE DRAWING SDA-2145-002



PCB LAYOUT: COMPONENT SIDE  
 RECOMMENDED PCB THICKNESS: .062

2145		
CKT	A	B
02	.156±.002 3.96±0.13	.308 7.82
03	.312±.005 7.92±0.13	.464 11.79
04	.468±.005 11.89±0.13	.620 15.75
05	.624±.005 15.85±0.13	.776 19.71
06	.780±.005 19.81±0.13	.932 23.67
07	.936±.010 23.77±0.25	1.088 27.64
08	1.092±.010 27.74±0.25	1.244 31.60
09	1.248±.010 31.70±0.25	1.400 35.56
10	1.404±.010 35.66±0.25	1.556 39.52
11	1.560±.010 39.62±0.25	1.712 43.48
12	1.716±.010 43.59±0.25	1.868 47.45
13	1.872±.010 47.55±0.25	2.024 51.41
14	2.028±.014 51.51±0.36	2.180 55.37
15	2.184±.014 55.47±0.36	2.336 59.33

REV FORMAT	EC NO. UCP2003-1553	DRWN: SAMIEC 1/16/03	CHK: SAMIEC 1/16/03	APPR: MARGULIS 1/16/03
DESCRIPTION	MAJOR CRITICAL			
REV	WI			

QUALITY SYMBOLS	MAJOR CRITICAL
DESCRIPTION	MAJOR CRITICAL

GENERAL TOLERANCES: (UNLESS SPECIFIED)	SCALE	DESIGN UNITS	THIRD ANGLE PROJECTION
4 PLACES ±0.	mm	mm	mm
3 PLACES ±0.	INCH	INCH	INCH
2 PLACES ±0.25	mm	mm	mm
1 PLACE ±0.36	INCH	INCH	INCH
ANGULAR: ±1/2°			
DRAFT WHERE APPLICABLE MUST REMAIN WITHIN DIMENSIONS			

DRAWN BY & DATE	CHECKED BY & DATE	APPROVED BY & DATE	CAD FILENAME
SAMIEC 1/16/03	SAMIEC 1/16/03	MARGULIS 1/16/03	.
THIS DRAWING CONTAINS INFORMATION THAT IS PROPRIETARY TO MOLEX INCORPORATED AND SHOULD NOT BE USED WITHOUT WRITTEN PERMISSION.			

DIMENSIONS:			ALL	WI
mm	INCH	mm	SHT	REV
INCH	mm	ONLY	REVISE ON CAD ONLY	
TITLE: KK 156 HOUSING ASSY PC TAIL BOTTOM ENRTY				
MOLEX INCORPORATED				
MATERIAL NO.	DRAWING NO.	SHEET NO.		
SEE CHART	SDA-2145 -003	1 OF 3		
SIZE				A



# KK 156 PCB ASSY 2-15 CKT

## 2145 BOTTOM ENTRY SERIES

CATALOG PRODUCTS

OPTIONS	RAMPS	YES	RAMPS	YES
	HOOKS:	YES	HOOKS:	YES
	COLOR:	WHITE	COLOR:	WHITE
	MOLD VOID:	NONE	MOLD VOID:	NONE
	TERM MATL:	PHOS BRONZE	TERM MATL:	PHOS BRONZE
	CONTACT:	STANDARD	CONTACT:	STANDARD
	PC TAIL (C):	.160 / 4.06	PC TAIL (C):	.160 / 4.06
	PLT CODE:	102 – TIN	PLT CODE:	567 – 15 GOLD
	TERM VOID:	NONE	TERM VOID:	NONE
	PACKAGING:	TRAY PK-2145-001	PACKAGING:	TRAY PK-2145-001
Ckt	Material No	Material No		
2	09-62-6024	09-62-4028		
3	09-62-6034	09-62-4038		
4	09-62-6044	09-62-4048		
5	09-62-6054	09-62-4058		
6	09-62-6064	09-62-4068		
7	09-62-6074	09-62-4078		
8	09-62-6084	09-62-4088		
9	09-62-6094	09-62-4098		
10	09-62-6104	09-62-4108		
11	09-62-6114	09-62-4118		
12	09-62-6124	09-62-4128		
13	09-62-6134	09-62-4138		
14	09-62-6144	09-62-4148		
15	09-62-6154	09-62-4158		

<b>REV:</b>	<b>UCP2003-1553</b> 1/24/2003 SAMIEC	<b>TITLE:</b>	
<b>W1</b>		<b>KK 156 PCB ASSY</b> <b>2145 BOTTOM ENTRY SERIES</b>	<u>SHEET No.</u> <b>- 2 -</b>
<b>DOCUMENT NUMBER:</b>	<b>CREATED / REVISED BY:</b>	<b>CHECKED BY:</b>	<b>APPROVED BY:</b>
<b>SDA-2145-003</b>	<b>SAMIEC</b>	<b>SAMIEC</b>	<b>MARGULIS</b>



# KK 156 PCB ASSY 2-15 CKT

## 2145 BOTTOM ENTRY SERIES

CUSTOM PRODUCTS

OPTIONS	RAMPS	YES	RAMPS	YES	RAMPS	YES	RAMPS	YES
	HOOKS:	YES	HOOKS:	YES	HOOKS:	YES	HOOKS:	YES
	COLOR:	WHITE	COLOR:	WHITE	COLOR:	WHITE	COLOR:	WHITE
	MOLD VOID:	NONE	MOLD VOID:	NONE	MOLD VOID:	NONE	MOLD VOID:	NONE
	TERM MATL:	PHOS BRONZE	TERM MATL:	BRASS	TERM MATL:	BRASS	TERM MATL:	BRASS
	CONTACT:	STANDARD	CONTACT:	STANDARD	CONTACT:	STANDARD	CONTACT:	STANDARD
	PC TAIL (C):	.160 / 4.06	PC TAIL (C):	.160 / 4.06	PC TAIL (C):	.160 / 4.06	PC TAIL (C):	.126 / 3.20
	PLT CODE:	P913 – TIN/LEAD	PLT CODE:	P913 – TIN/LEAD	PLT CODE:	567 – 15 GOLD	PLT CODE:	P913 – TIN/LEAD
	TERM VOID:	NONE	TERM VOID:	NONE	TERM VOID:	NONE	TERM VOID:	NONE
	PACKAGING:	TRAY PK-2145-001	PACKAGING:	TRAY PK-2145-001	PACKAGING:	TRAY PK-2145-001	PACKAGING:	TRAY PK-2145-001
Ckt	Material No		Material No		Material No		Material No	
2	09-52-2028		09-52-3022		09-62-3022		09-52-5022	
3	09-52-2038		09-52-3032		09-62-3032		09-52-5032	
4	09-52-2048		09-52-3042		09-62-3042		09-52-5042	
5	09-52-2058		09-52-3052		09-62-3052		09-52-5052	
6	09-52-2068		09-52-3062		09-62-3062		09-52-5062	
7	09-52-2078		09-52-3072		09-62-3072		09-52-5072	
8	09-52-2088		09-52-3082		09-62-3082		09-52-5082	
9	09-52-2098		09-52-3092		09-62-3092		09-52-5092	
10	09-52-2108		09-52-3102		09-62-3102		09-52-5102	
11	09-52-2118		09-52-3112		09-62-3112		09-52-5112	
12	09-52-2128		09-52-3122		09-62-3122		09-52-5122	
13	09-52-2138		09-52-3132		09-62-3132		09-52-5132	
14	09-52-2148		09-52-3142		09-62-3142		09-52-5142	
15	09-52-2158		09-52-3152		09-62-3152		09-52-5152	

<b>REV:</b>	<b>W1</b>	<b>UCP2003-1553</b> 1/24/2003 SAMIEC	<b>TITLE:</b> <b>KK 156 PCB ASSY</b> <b>2145 BOTTOM ENTRY SERIES</b>	<b>SHEET No.</b> <b>- 3 -</b>			
<b>DOCUMENT NUMBER:</b>	<b>SDA-2145-003</b>	<b>CREATED / REVISED BY:</b>	<b>SAMIEC</b>	<b>CHECKED BY:</b>	<b>SAMIEC</b>	<b>APPROVED BY:</b>	<b>MARGULIS</b>

20	(75.29±0.41) 2.964±.016	(79.15±0.51) 3.116±.020
19	(71.32±0.41) 2.809±.016	(75.18±0.51) 2.960±.020
18	(67.36±0.36) 2.652±.014	(71.22±0.46) 2.804±.018
17	(63.40±0.36) 2.496±.014	(67.26±0.46) 2.648±.018
16	(59.44±0.36) 2.340±.014	(63.29±0.46) 2.492±.018
15	(55.47±0.3) 2.184±.012	(59.33±0.41) 2.336±.016
14	(51.51±0.3) 2.028±.012	(55.37±0.41) 2.180±.016
13	(47.55±0.30) 1.872±.012	(51.41±0.41) 2.024±.016
12	(43.59±0.25) 1.716±.010	(47.45±0.36) 1.868±.014
11	(39.62±0.25) 1.560±.010	(43.48±0.36) 1.712±.014
10	(35.66±0.25) 1.404±.010	(39.52±0.3) 1.556±.012
9	(31.70±0.18) 1.248±.007	(35.56±0.3) 1.400±.012
8	(27.74±0.18) 1.092±.007	(31.60±0.3) 1.244±.012
7	(23.77±0.18) .936±.007	(27.64±0.3) 1.088±.012
6	(19.81±0.13) .780±.005	(23.67±0.25) .932±.011
5	(15.85±0.13) .624±.005	(19.71±0.25) .776±.010
4	(11.89±0.13) .468±.005	(15.75±0.25) .620±.010
3	(7.92±0.13) .312±.005	(11.79±0.25) .464±.010

IN VOID POS'N  
NO TERMINAL SUPPLIED

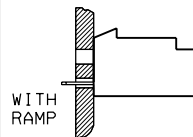
NOTES:

1. THESE ASSEMBLIES STACKABLE END TO END ON (3.96)/.156 CENTRE TO CENTRE PROGRESSION.
2. FOR CHARTS & PANEL DRILLING DETAILS SEE SHEET 2 AND SUBSEQUENT SHEETS.
3. TERMINAL PULL OUT FORCE- 4LBS MIN.
4. TERMINALS ARE LUBRICATED WITH MXI-3.
5. CONNECTORS FOR USE WITH (1.14)/.045 SQ. OR RD. PINS

TERMINAL STYLE → A

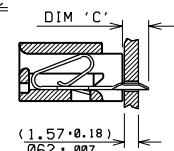
HOUSING STYLE ↓ C

B



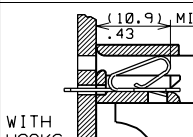
WITH RAMP

C



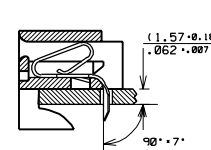
SEE CHART

CR



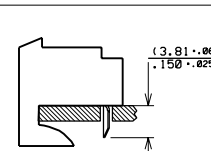
WITH RAMP

H



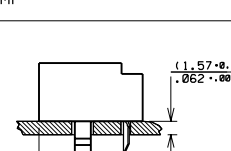
WITH HOOKS

HR



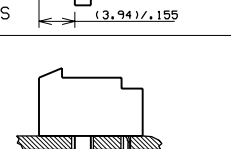
WITH HOOKS & RAMP

L



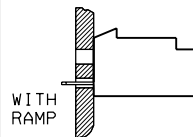
WITH LOCKS

LR



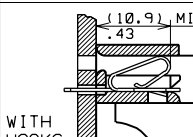
WITH LOCKS & RAMP

CR



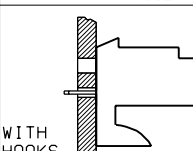
WITH RAMP

H



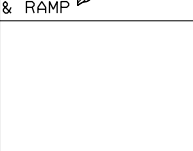
WITH HOOKS

HR




WITH HOOKS & RAMP

L



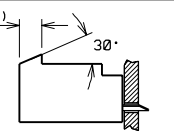
WITH LOCKS

LR



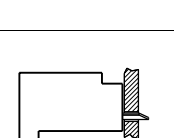
WITH LOCKS & RAMP

C



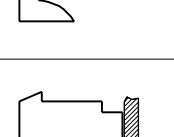
WITH RAMP

C



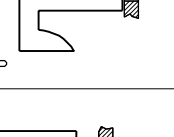
WITH HOOKS

C



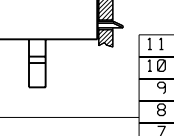
WITH HOOKS & RAMP

C



WITH LOCKS

C



WITH LOCKS & RAMP

11	Z
10	Z
9	Z
8	Z
7	Z
6	Z
5	Z
4	Z
3	Z
2	Y
1	Z

UPDATED BORDER	QUALITY SYMBOLS	GENERAL TOLERANCES: (UNLESS SPECIFIED)	SCALE 4 : 1	DESIGN UNITS	THIRD ANGLE PROJECTION	SHT	REV
EC NO. E2001-0463	MAJOR	4 PLACES ±0. ±.	4 : 1	mm	<input checked="" type="checkbox"/> mm <input type="checkbox"/> INCH <input type="checkbox"/> INCH ONLY		
DRWING INDRAK 24/11/00	CRITICAL	3 PLACES ±0. ±.010		INCH	<input type="checkbox"/> mm <input checked="" type="checkbox"/> INCH ONLY		
CHK: / /		2 PLACES ±0.25 ±.014					
APPR: / /		1 PLACE ±0.36 ±.					
REV	DESCRIPTION	ANGULAR: ± 1/2 °					
Z		DRAFT WHERE APPLICABLE MUST REMAIN WITHIN DIMENSIONS					

DRAWN BY & DATE	TITLE:	SHEET NO.
G. HART 24/11/82	CONNECTOR, K-K (3.96)/.156 WITH OR WITHOUT LOCKING WITH P.C. TAIL TERMINALS	1 OF 1
CHECKED BY & DATE	MATERIAL NO.	SIZE
M. GOONEY 26/11/98	SEE CHART	C
APPROVED BY & DATE	DRAWING NO.	
MWILHITE 26/11/98	SE32151 .DGN	
CAD FILENAME	THIS DRAWING CONTAINS INFORMATION THAT IS PROPRIETARY TO MOLEX INCORPORATED AND SHOULD NOT BE USED WITHOUT WRITTEN PERMISSION.	
MOLEX MOLEX INCORPORATED		

13		12		11		10		9		8		7		6		5		4		3		2		1					
PART NO.	ENG NO.	NO. OF CCTS	LOCK RAMP	VOID CCT POS'N		PART NO.	ENG NO.	NO. OF CCTS	LOCK RAMP	VOID CCT POS'N	CENTRE HOOK LOCATED BETWEEN CCT NO'S	PART NO.	ENG NO.	NO. OF CCTS	LOCK RAMP	VOID CCT POS'N	CENTRE HOOK LOCATED BETWEEN CCT NO'S	PART NO.	ENG NO.	NO. OF CCTS	LOCK RAMP	VOID CCT POS'N	CENTRE HOOK LOCATED BETWEEN CCT NO'S	PART NO.	ENG NO.	NO. OF CCTS	LOCK RAMP	VOID CCT POS'N	CENTRE HOOK LOCATED BETWEEN CCT NO'S
26-11-6038	AE-3215-CR3BB	3	YES	NONE		26-11-6039	AE-3215-H3BB	3	NO	NONE	---	26-11-6035	AE-3215-HR3BB	3	YES	NONE	---	26-11-2031	AE-3215-C3AC	3	NO	NONE							
↑ -6048	↑ -CR4BB	4	↑	↑		↑ -6049	↑ -H4BB	4	↑	↑	---	↑ -6045	↑ -HR4BB	4	↑	↑	---	↑ -2041	↑ -C4AC	4	↑	↑							
-6058	-CR5BB	5				-6059	-H5BB	5			---	-6055	-HR5BB	5			---	-2051	-C5AC	5									
-6068	-CR6BB	6				-6069	-H6BB	6			---	-6065	-HR6BB	6			---	-2061	-C6AC	6									
-6078	-CR7BB	7				-6079	-H7BB	7			---	-6075	-HR7BB	7			---	-2071	-C7AC	7									
-6088	-CR8BB	8				-6089	-H8BB	8			4&5	-6085	-HR8BB	8			4&5	-2081	-C8AC	8									
-6098	-CR9BB	9				-6099	-H9BB	9			4&5	-6095	-HR9BB	9			4&5	-2091	-C9AC	9									
-6108	-CR10BB	10				-6109	-H10BB	10			5&6	-6105	-HR10BB	10			5&6	-2101	-C10AC	10									
-6118	-CR11BB	11				-6119	-H11BB	11			5&6	-6115	-HR11BB	11			5&6	-2111	-C11AC	11									
-6128	-CR12BB	12				-6129	-H12BB	12			4&5 8&9	-6125	-HR12BB	12			4&5 8&9	-2121	-C12AC	12									
-6138	-CR13BB	13				-6139	-H13BB	13			4&5 9&10	-6135	-HR13BB	13			4&5 9&10	-2131	-C13AC	13									
-6148	-CR14BB	14				-6149	-H14BB	14			5&6 9&10	-6145	-HR14BB	14			5&6 9&10	↓ -2141	-C14AC	14									
-6158	-CR15BB	15				-6159	-H15BB	15			5&6 10&11	-6155	-HR15BB	15			5&6 10&11	26-11-2151	-C15AC	15									
-6168	-CR16BB	16				-6169	-H16BB	16			6&7 11&12	-6165	-HR16BB	16			6&7 11&12	NOT TOOLED	-C16AC	16									
-6178	-CR17BB	17				-6179	-H17BB	17			6&7 11&12	-6175	-HR17BB	17			6&7 11&12	↑	-C17AC	17									
-6188	-CR18BB	18				-6189	-H18BB	18			6&7 10&11 15&16	-6185	-HR18BB	18			6&7 10&11 15&16	↑	-C18AC	18									
↓ -6198	↓ -CR19BB	19	↓	↓		↓ -6199	↓ -H19BB	19	↓	↓	5&6 10&11 15&16	↓ -6195	↓ -HR19BB	19	↓	↓	5&6 10&11 15&16	↓	-C19AC	19	↓	↓							
26-11-6208	AE-3215-CR20BB	20	YES	NONE		26-11-6209	AE-3215-H20BB	20	NO	NONE	5&6 10&11 15&16	26-11-6205	AE-3215-HR20BB	20	YES	NONE	5&6 10&11 15&16	NOT TOOLED	AE-3215-C20AC	20	NO	NONE							
												38-00-0545	AE-3215-HR17BB-51	17	YES	3,6,9 12,15	6&7 11&12												
												38-00-0546	AE-3215-HR8BB-51	8	YES	3,6	4&5												

SEE CHART  
SDAE-3215-\*\*\*N\*\*\*

HOUSING.  
STYLE- CR

TERMINAL.  
STYLE- B

DRILLING DETAIL 'B'  
(SEE SHEET 2)

HOUSING.  
STYLE- H

TERMINAL.  
STYLE- B

DRILLING DETAIL 'B'

HOUSING.  
STYLE- HR

TERMINAL.  
STYLE- B

DRILLING DETAIL 'B'

HOUSING.  
STYLE- C

TERMINAL.  
STYLE- C

DRILLING DETAIL 'D'

**NOTES:**

1. TERMINAL MUST MEET MOLEX SOLDERABILITY SPEC. NO. 152.

**MATERIAL:**

HOUSING- NYLON, 94V-2, COLOUR- NATURAL  
TERMINAL- PHOS. BR. PLATING (P914)  
HOT TIN/LEAD DIP (60/40) 1-2.5UM (.00040"-.000100")

SEE SHEET 1 EC NO: INDRAM 24/10/00 CHK: / / / / APPR: / / / / REV: Z	QUALITY SYMBOLS	GENERAL TOLERANCES: (UNLESS SPECIFIED)		SCALE	DESIGN UNITS	THIRD ANGLE PROJECTION	DIMENSIONS:	SHT	REV
	MAJOR	m/m	INCH	1:1	mm	<input checked="" type="checkbox"/> mm <input type="checkbox"/> INCH	<input checked="" type="checkbox"/> mm <input type="checkbox"/> INCH		
	CRITICAL	4 PLACES ±0.1	±.005		mm				
	C	3 PLACES ±0.1	±.005		mm				
		2 PLACES ±0.1	±.005		mm				
		1 PLACE ±0.1	±.005		mm				
		ANGULAR: ±1/2°		DRAWN BY & DATE G. HART 24/11/82		TITLE: CONNECTOR, K-K (3.96) / .156 WITH OR WITHOUT LOCKING WITH P.C. TAIL TERMINALS			
		DRAFT WHERE APPLICABLE MUST REMAIN WITHIN DIMENSIONS		CHECKED BY & DATE M GOONEY 26/11/98		MATERIAL NO. MOLEX INCORPORATED			
				APPROVED BY & DATE MWILHITE 26/11/98		DRAWING NO. SDAE-3215-***N***			
				CAD FILENAME SE32154.DGN		SHEET NO. 4 OF 4			
				THIS DRAWING CONTAINS INFORMATION THAT IS PROPRIETARY TO MOLEX INCORPORATED AND SHOULD NOT BE USED WITHOUT WRITTEN PERMISSION.		SIZE C			