

RED IS CONTAINED

DISK # DWG SIZE DATA CONTAINED IN THIS DOCUMENT IS PROPRIETARY TO TROMPETER ELECTRONICS, INC. AND SHALL NOT BE DISCLOSED, COPIED OR USED FOR REPRODUCTION OR MANUFACTURE WITHOUT EXPRESS WRITTEN PERMISSION.

J9 C

REV		EO	DESCRIPTION	OWN	APPROVED	DATE
			REVISIONS	305-0734		SH 1
B	10051		PICTORIALLY CHANGED 1.00 FLARED SEALING SLEEVE TO STRAIGHT (1.25) LONG SEALING SLEEVE; GENERAL UPDATE	DKC	<i>DKC</i>	12/1/92

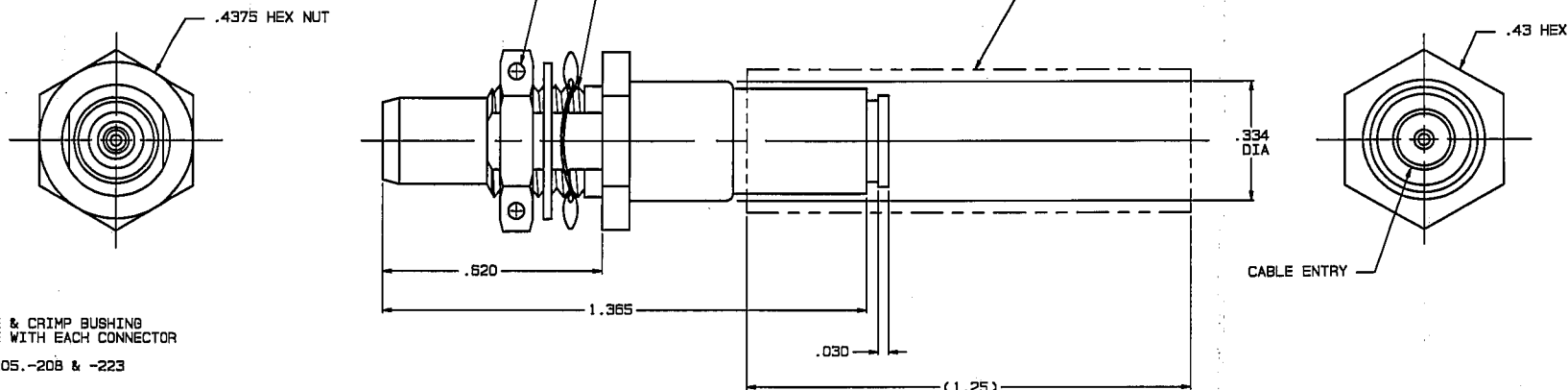
TABLE 1

DASH NO	MODEL NO	CENTER CONTACT/INTMD CONTACT TYPE
-1	TBJ3459C P	SOCKET/PIN
-2	TBJ3459C S	PIN/SOCKET

TABLE 2

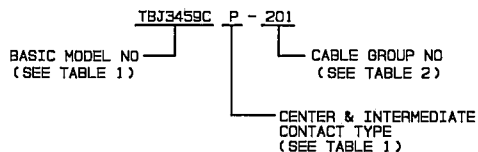
CABLE GROUP NO	CABLES ACCOMMODATED	ASSEMBLE PER
-201	M17/176-00002	TAI-162
-202	TWC-78-1, TROMPETER	
-203	TWC-124-1A, TROMPETER	
-204	10602, RAYCHEM	
-205	TWAC-78-1F2, TROMPETER	
-206	7826DD130, RAYCHEM	
-208	202-3927, MICRODOT	
-212	2524E0114, RAYCHEM	
-209	202-3942, MICRODOT	
-217	0C875TM24H, GRUMMAN	
-218	EPD22188B, RAYCHEM	
-219	2526D1114, RAYCHEM	
-220	0C875RR1, GRUMMAN	
-221	10614, RAYCHEM	
-222	10613, RAYCHEM	
-223	HMS2-1149, HUGHES	

INCH	MM
.003	0.08
.0050	0.13
.010	0.25
.030	0.76
.047	1.19
.125	3.18
.255	6.48
.274	6.96
.278	7.06
.330	8.38
.334	8.48
.335	8.51
.43	10.92
.4375	11.11
.620	15.75
1.25	31.75
1.365	34.67

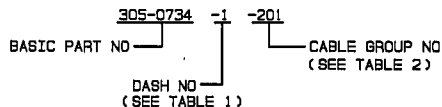


-1-221 SHOWN

6. EXAMPLE OF COMPLETE MODEL NO:



5. EXAMPLE OF COMPLETE PART NO:

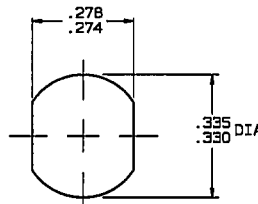


4. MAX PANEL THK .125

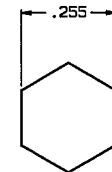
3. CONCENTRIC TWINAX 4 PIECE ASSY, FULL CRIMP
NONINSULATED BULKHEAD MOUNT RECEPTACLE, SOCKET CENTER CONTACT AND PIN INTERMEDIATE CONTACT OR PIN CENTER CONTACT AND SOCKET INTERMEDIATE CONTACT

2. FINISH: TFS-1T (500 HOURS SALT SPRAY; TIN)

1. ALL DIM ARE IN INCHES



RECOMMENDED
PANEL CUTOUT



RECOMMENDED
HEX CRIMP

QTY	DESCRIPTION	PART NUMBER	ITEM
TOL UNLESS SPECIFIED		TROMPETER ELECTRONICS, INC.	TBJ3459CP/S
.XX ± .03	.XXX ± .010		
.XXX ± .010	.XXXX ± .0050	DRAWING NO. 305-0734	
ANGLE#		REV B	
DWN DKC 12-3-92	MATERIAL	CODE IDENT	DRAWING NO. 305-0734
CHK <i>DKC</i>			REV B
ENGR			
APPR <i>DKC</i>	12/1/92	SCALE 4/1	DATE 3/7/90 SHEET 1 OF 2