

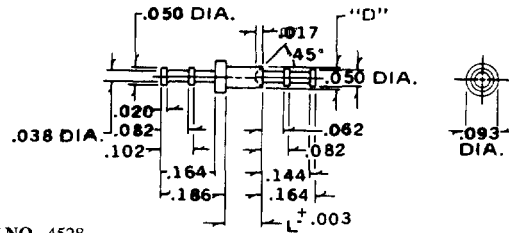


MIL-T-55155 Terminals

ORDER BY PART NO.	"D" ±.002	L NOM.	RECOMMENDATIONS		
			BD THICK	MTG HOLE	SWAGE TOOL
4528 B	.072	.082	.062	+0.03	4528
4528 C	DIA.	.113	.094	.076	
4528 D		.145	.125	DIA.	

MIL-T-55155/15-1, 2, & 3

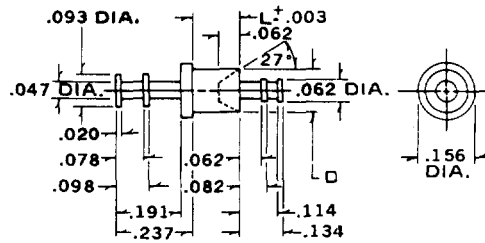
PART NO. 4528



ORDER BY PART NO.	"D" ±.002	L NOM.	RECOMMENDATIONS		
			BD THICK	MTG HOLE	SWAGE TOOL
4529 B	.125	.105	.062	+0.03	4529
4529 C	DIA.	.135	.094	.129	
4529 D		.165	.125	DIA.	

MIL-T-55155/15-4, 5, & 6

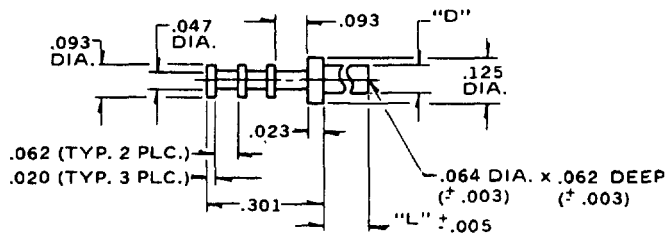
PART NO. 4529



ORDER BY PART NO.	"D" ±.002	L NOM.	RECOMMENDATIONS		
			BD THICK	MTG HOLE	SWAGE TOOL
4575 A		.062	.031		4575
4575 B	.090	.093	.062	+0.03	
4575 C	DIA.	.125	.094	.094	
4575 D		.156	.125	-0.01	
4575 E		.218	.187	DIA.	
4575 F					

MIL-T-55155/31-1, 3, 5, 7 & 10

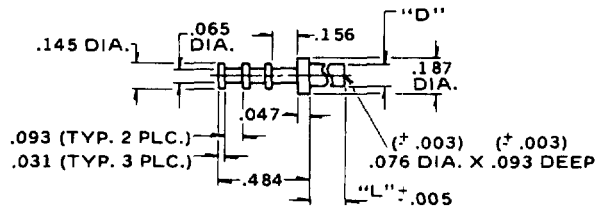
PART NO. 4575



ORDER BY PART NO.	"D" ±.002	L NOM.	RECOMMENDATIONS		
			BD THICK	MTG HOLE	SWAGE TOOL
4576 A		.078	.031		4576
4576 B	.112	.109	.062	+0.03	
4576 C	DIA.	.140	.094	.116	
4576 D		.171	.125	-0.01	
4576 E		.195	.156	DIA.	
4576 F		.234	.187		
4576 G		.296	.250		

MIL-T-55155/31-2, 4, 6, 8, 9, 11 & 12

PART NO. 4576



Standard Plating Suffix to Part Number

Terminal

See Page 93 for all plating options.

-4 (Sb over Cu)

TOLERANCE: .xxx ±.005 (ALL DIMS. BEFORE PLATING)