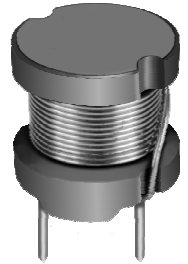
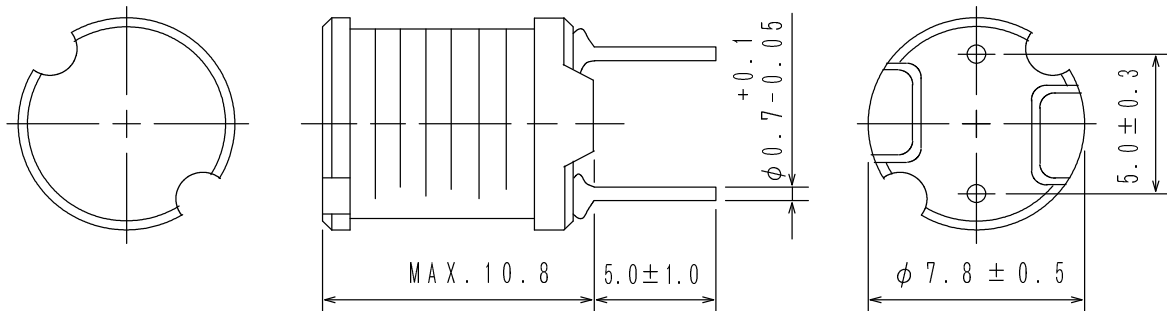
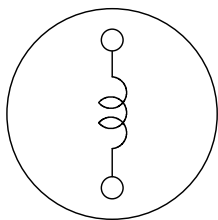


Type: RCH8011
◆ Product Description

- 8.3mm Max. ϕ , 10.8mm Max. Height.
- Inductance range: $10\ \mu\text{H} \sim 1.0\text{mH}$.
- Rated current range: $0.47 \sim 4.1\text{A}$.
- In addition to the standard versions of inductors shown here, custom inductors are available to meet your exact requirements.


◆ Feature

- Magnetically unshielded construction.
- Ideally used in Printers, LCD TV, DVD, Printer, Copy Machine, Main board of the compounding machines, etc as power supplier's Inductors or DC-DC converter inductors.
- RoHS Compliance and Halogen Free.

◆ Dimensions (mm)

◆ Schematics (Bottom)


Type: RCH8011
◆ Specification

| Part Name | Stamp | Inductance (μ H) 100 kHz/1V | D.C.R. (m Ω) [Max.] (Typ.) (at 20°C) | Saturation Current (mA) ※1 | Temperature Rise Current (mA)※2 |
|----------------|-------|--|--|-------------------------------|---------------------------------------|
| RCH8011NP-100L | 100 | 10 \pm 15% | 35(28) | 4400 | 4100 |
| RCH8011NP-120L | 120 | 12 \pm 15% | 40(32) | 4000 | 3950 |
| RCH8011NP-150L | 150 | 15 \pm 15% | 47(38) | 3600 | 3750 |
| RCH8011NP-180L | 180 | 18 \pm 15% | 53(42) | 3300 | 3600 |
| RCH8011NP-220L | 220 | 22 \pm 15% | 56(45) | 2800 | 3050 |
| RCH8011NP-270L | 270 | 27 \pm 15% | 65(52) | 2600 | 2800 |
| RCH8011NP-330L | 330 | 33 \pm 15% | 75(60) | 2400 | 2700 |
| RCH8011NP-390L | 390 | 39 \pm 15% | 84(67) | 2200 | 2550 |
| RCH8011NP-470L | 470 | 47 \pm 15% | 110(88) | 2000 | 2150 |
| RCH8011NP-560L | 560 | 56 \pm 15% | 123(98) | 1850 | 2000 |
| RCH8011NP-680L | 680 | 68 \pm 15% | 138(111) | 1700 | 1900 |
| RCH8011NP-820L | 820 | 82 \pm 15% | 190(154) | 1600 | 1550 |
| RCH8011NP-101L | 101 | 100 \pm 15% | 215(172) | 1500 | 1500 |
| RCH8011NP-121L | 121 | 120 \pm 15% | 275(222) | 1200 | 1300 |
| RCH8011NP-151L | 151 | 150 \pm 15% | 310(250) | 1100 | 1200 |
| RCH8011NP-181L | 181 | 180 \pm 15% | 360(288) | 1000 | 1100 |
| RCH8011NP-221L | 221 | 220 \pm 15% | 440(354) | 950 | 1050 |
| RCH8011NP-271L | 271 | 270 \pm 15% | 590(472) | 900 | 900 |
| RCH8011NP-331L | 331 | 330 \pm 15% | 640(512) | 800 | 820 |
| RCH8011NP-391L | 391 | 390 \pm 15% | 710(570) | 700 | 780 |
| RCH8011NP-471L | 471 | 470 \pm 15% | 900(720) | 650 | 700 |
| RCH8011NP-561L | 561 | 560 \pm 15% | 1125(903) | 600 | 640 |
| RCH8011NP-681L | 681 | 680 \pm 15% | 1280(1025) | 560 | 540 |
| RCH8011NP-821L | 821 | 820 \pm 15% | 1660(1329) | 520 | 500 |
| RCH8011NP-102L | 102 | 1000 \pm 15% | 1915(1532) | 490 | 470 |

※1: Saturation current: The DC current at which the inductance decreases to 90% of its initial value.

※2: Temperature rise current: The DC current at which the temperature rise is $\Delta t=40^{\circ}\text{C}$. ($T_a=20^{\circ}\text{C}$).