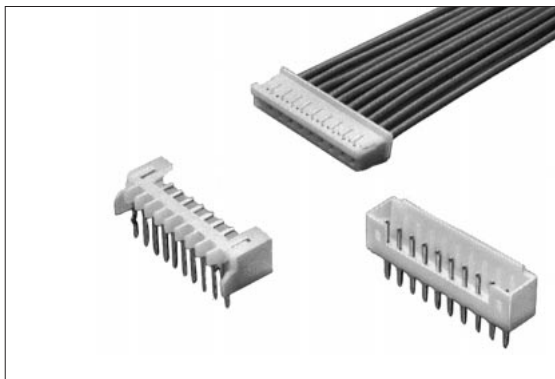


CRIMP CONNECTOR

UP Series 2.0mm Spacing



Features

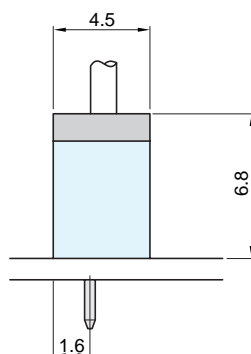
1. UP series are crimp type connectors featuring a compact design with pins set at 2.0mm spacing. Socket and plug connections for this model measure only 6.8mm high and 4.5mm thick.
2. Connectors in this series are available in two basic plug-in designs (straight or right-angle) and come in an assortment of fourteen different plug types ranging from 2P to 15P.
3. The terminal for this connector features a tapered "dimple" design which is highly resistant against even minute amounts of friction.
4. A lock mechanism is utilized for the socket and plug housings to ensure firm connection and to prevent improper plug insertion.

Specifications

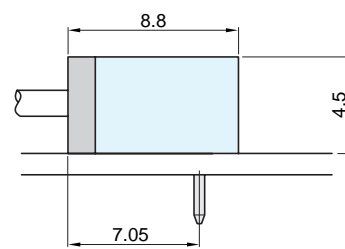
1. Rating : 1A 125V AC/DC
2. Contact Resistance : 20mΩ max.
3. Insulation Resistance :
1,000MΩ min. at 500V DC
4. Withstanding Voltage :
500V AC for one minute.
5. Operating Temperature :
-25°C to +85°C
6. Applicable Wire Size : AWG22 to 30
(Sheath dia. ϕ 0.5 to ϕ 1.5mm)
7. Applicable PC Board Thickness:
1.0mm to 1.6mm

Connection Diagram

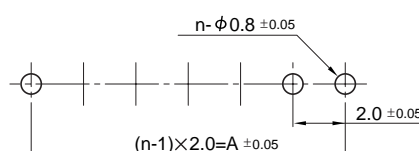
Straight Type



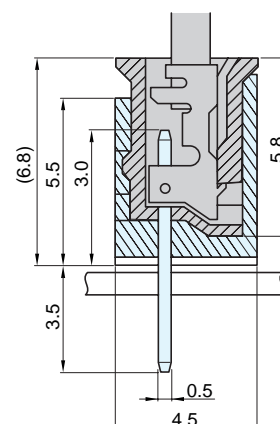
Right-Angle Type



Recommended Mounting Hole for PC Board

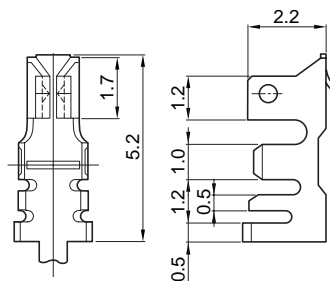


Structural Configuration Diagram



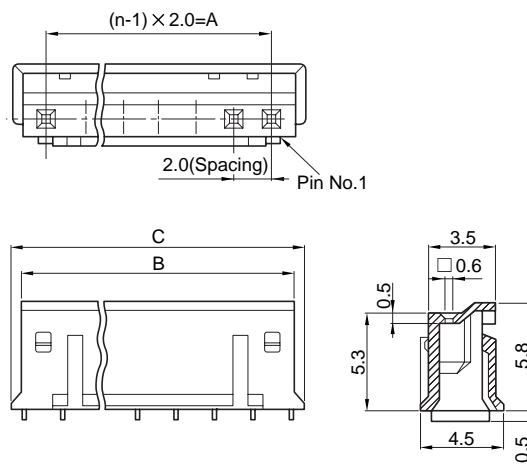
● Terminal

Part No.	Applicable Wire Size (AWG)	Sheath Dia. (mm)	Material	Plating	No. of Terminal/Reel
W-T0843-11#01	22~28	φ 1.5~φ 0.8	Phosphor Bronze	Tinned (Reflow Treatment)	15,000
W-T0844-11#01	26~32	φ 1.3~φ 0.5	Phosphor Bronze	Tinned (Reflow Treatment)	15,000



● Socket Housing

No. of Pins	Part No.	A	B	C
2	W-A2402-IN #01	2.0	4.5	5.6
3	W-A2403-IN #01	4.0	6.5	7.6
4	W-A2404-IN #01	6.0	8.5	9.6
5	W-A2405-IN #01	8.0	10.5	11.6
6	W-A2406-IN #01	10.0	12.5	13.6
7	W-A2407-IN #01	12.0	14.5	15.6
8	W-A2408-IN #01	14.0	16.5	17.6
9	W-A2409-IN #01	16.0	18.5	19.6
10	W-A2410-IN #01	18.0	20.5	21.6
11	W-A2411-IN #01	20.0	22.5	23.6
12	W-A2412-IN #01	22.0	24.5	25.6
13	W-A2413-IN #01	24.0	26.5	27.6
14	W-A2414-IN #01	26.0	28.5	29.6
15	W-A2415-IN #01	28.0	30.5	31.6



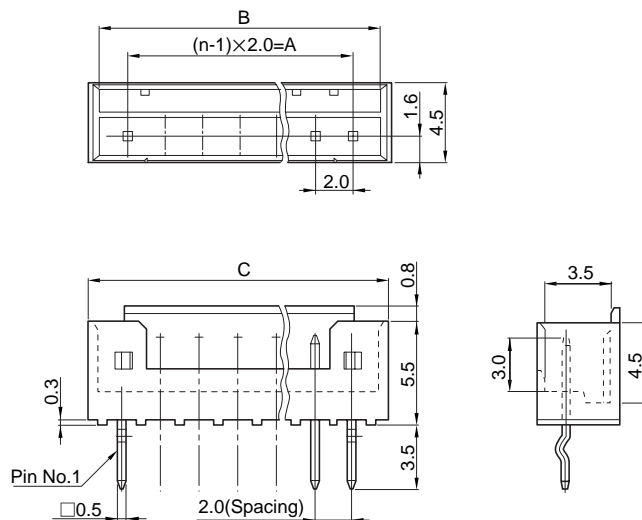
■ Material and Plating

- Housing : Polyamide (Natural color) 94V-0

Straight Type

● Plug

No. of Pins	Straight Type	Right-Angle Type	A	B	C
2	W-P7502#11	W-P7902#11	2.0	4.6	5.6
3	W-P7503#11	W-P7903#11	4.0	6.6	7.6
4	W-P7504#11	W-P7904#11	6.0	8.6	9.6
5	W-P7505#11	W-P7905#11	8.0	10.6	11.6
6	W-P7506#11	W-P7906#11	10.0	12.6	13.6
7	W-P7507#11	W-P7907#11	12.0	14.6	15.6
8	W-P7508#11	W-P7908#11	14.0	16.6	17.6
9	W-P7509#11	W-P7909#11	16.0	18.6	19.6
10	W-P7510#11	W-P7910#11	18.0	20.6	21.6
11	W-P7511#11	W-P7911#11	20.0	22.6	23.6
12	W-P7512#11	W-P7912#11	22.0	24.6	25.6
13	W-P7513#11	W-P7913#11	24.0	26.6	27.6
14	W-P7514#11	W-P7914#11	26.0	28.6	29.6
15	W-P7515#11	W-P7915#11	28.0	30.6	31.6



■ Material and Plating

- Housing : Polyamide (Natural Color) 94V-0
- Plug pin : Brass, Tin-lead plating Reflow Treatment

Right-Angle Type

■ NOTE

Contact the company directly if additional specifications are desired.

