

SPECIFICATIONS

Mechanical

Contact Retention Force: 0.50Kg min.

Electrical

Voltage Rating: 750V

Current Rating: 1A

Contact Resistance: 45mΩ max.

Dielectrical Withstanding Voltage: 1000V

Insulation Resistance: 1000MΩ min.

Physical

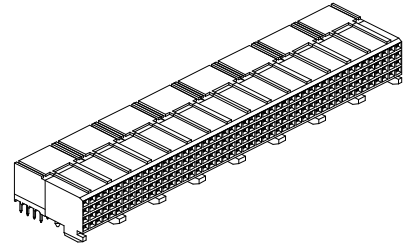
Housing: LCP, UL 94-0, Ivory White

Contact: Phosphor Bronze

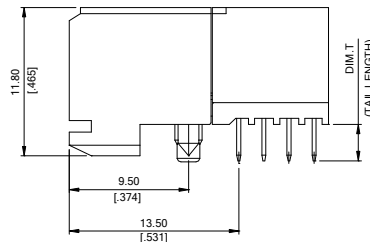
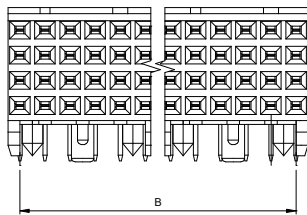
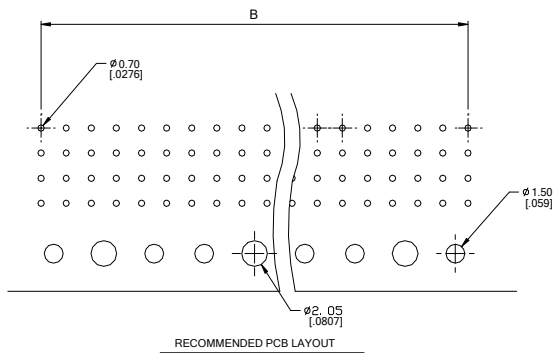
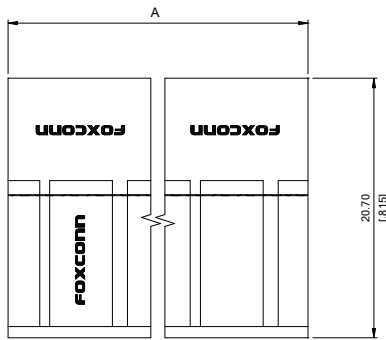
Plating: See "ORDERING INFORMATION"

FUTURE BUS CONNECTOR

1F Series,
Rec. Solder Fit Type
2.0mm Pitch
4Rows



DRAWING



ORDERING INFORMATION

PRODUCT NO.: 1 F 1 2 * * * * - S * 0 1 0 N - A *

POS. NO.
024: 24 POS.
048: 48 POS.
072: 72 POS.
096: 96 POS.
120: 120 POS.
144: 144 POS.
168: 168 POS.
192: 192 POS.

MATING AREA PLATING
1: GOLD FLASH
3: 0.76um(30u")MIN. GOLD PLATING
5: 1.27um(50u")MIN. GOLD PLATING
A: 0.76um(30u")MIN. FPT PLATING
0.25um(10u")MIN. GOLD INCLUDED

LEAD FREE CODE
N: NONE
F: LEAD FREE PLATING
TAIL LENGTH (T)
1: 2.90mm
2: 2.73mm
3: 3.53mm

1F12192*-S*O10N-AF	192	95.90	94.00
1F12168*-S*O10N-AF	168	83.90	82.00
1F12144*-S*O10N-AF	144	71.90	70.00
1F12120*-S*O10N-AF	120	59.90	58.00
1F12096*-S*O10N-AF	96	47.90	46.00
1F12072*-S*O10N-AF	72	35.90	34.00
1F12048*-S*O10N-AF	48	23.90	22.00
1F12024*-S*O10N-AF	24	11.90	10.00
P/N	POS.	DIM. A	DIM. B