

CATALOG NUMBER DESCRIPTION

RP1G PIN HEADER

NO OF POSITIONS: 72, 96, 120, 150

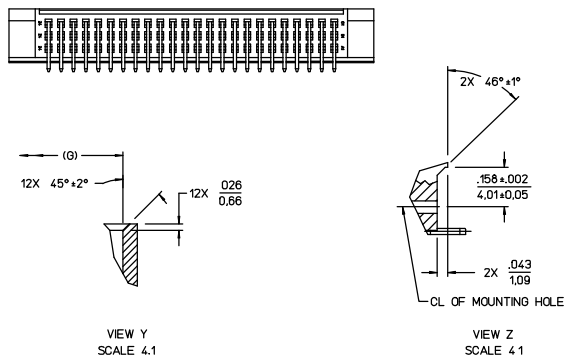
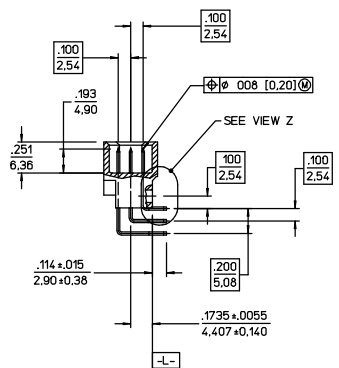
U 30 P - - 16

VARIATION
16-RIGHT ANGLE PIN HEADER
CARD EXTENDER

CONTACT FINISH
B-30 MICROINCH GOLD
D-30 MICROINCH PALLADIUM NICKEL

CONTACT ARRANGEMENT

DESIGNATION	ARRANGEMENT
30	3 ROWS FULLY LOADED




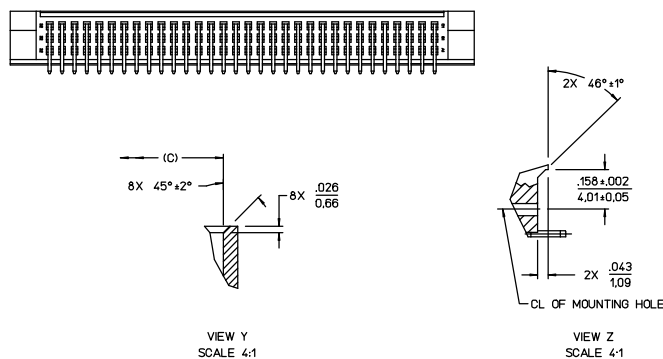
REFERENCE.

SE93320, RPI672U30RB-10

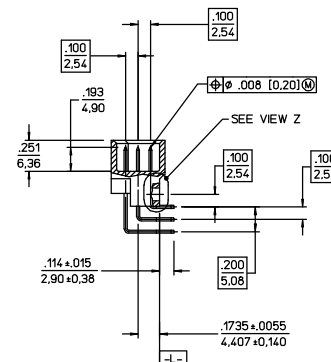
SUPERSEDED SE93315 SHT. 5
BY SE95579 SHT. 1



SUPERSEDES: SKME268.0-2

LINEAR MEASURE:	INCH mm	INCH mm
THIRD ANGLE PROJECTION		
		
- TOLERANCES -		
UNLESS OTHERWISE SPECIFIED		
NO. OF DECIMAL PLACES IN INCHES	INCH (mm)	
ONE PLACE	±1 (.05)	
TWO PLACES	±.02 (.05)	
THREE PLACES	±.005 (.013)	
ANGLES ±°		



CONTACT FINISH: 30 MICROINCHES [0,762 MICRONS] MIN GOLD IN CONTACT AREA
200 MICROINCHES [5,08 MICRONS] MIN TIN/LEAD ALLOY ON CONTACT TAILS
50 MICROINCHES [1,27 MICRONS] MIN NICKEL UNDERPLATE ALL OVER



LINEAR MEASURE: $\frac{\text{INCH}}{\text{mm}}$ $\frac{\text{INCH}}{\text{mm}}$ (mm)		RIGHT ANGLE PIN HEADER CARD EXTENDER CONNECTOR	
THIRD ANGLE PROJECTION 		CAT NO RPI- <u>U30PB-16</u> (SEE TABLE) SCALE <u>1:1</u>	
- TOLERANCES - UNLESS OTHERWISE SPECIFIED		DRAWN DET 2-07-89 CHECKED PJT 2-19-87	
NO OF DECIMAL PLACES IN INCHES ONE PLACE ± 1 (.2, .5, .1) TWO PLACES ± 02 (.05) THREE PLACES ± 005 (.013)		DSGN PJ.B 11-25-88 MKT TFK 9-23-88 QC DC 10-12-88	
		DRAWING NO 10-12-88	
FRAMATOME CONNECTORS INTERNATIONAL		SE93315	
SHEET 2 OF 3		SHEET 2 OF 3	

DWG RELEASED TO CENTRAL FILE 3-06-89	CAD APPROVAL PJT 3-06-89
--------------------------------------	--------------------------

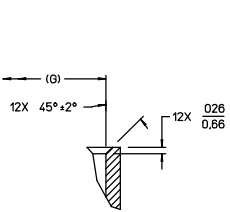
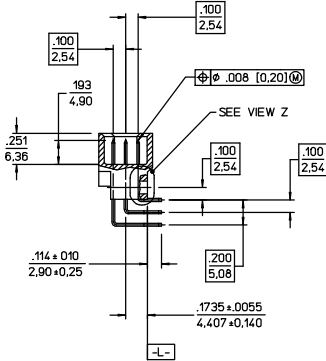
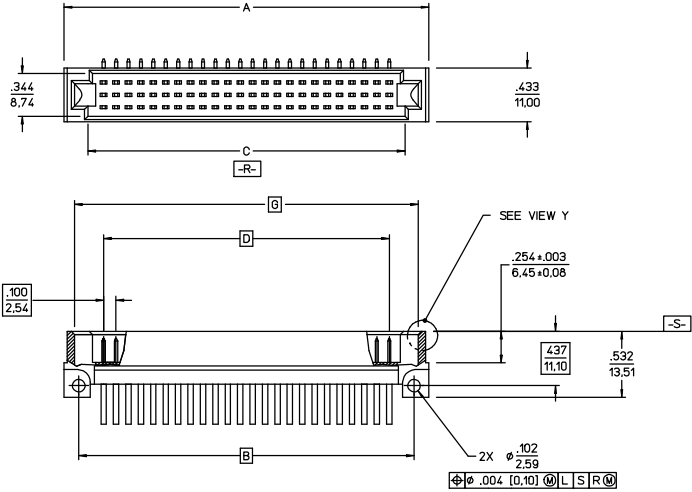
TABLE OF DIMENSIONS						
CATALOG NUMBER	NUMBER OF POSITIONS	A	B	C ±.004 (2.54)	D	G
RPI672U30PB-11	72	2.936 74.57	2.700 68.58	2.558 64.97	2.300 58.42	2.770 70.36
RPI696U30PB-11	96	3.736 94.57	3.500 88.90	3.358 85.29	3.100 78.74	3.369 90.65

NOTES: UNLESS OTHERWISE SPECIFIED,

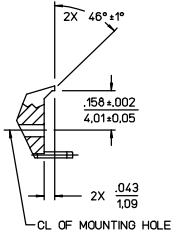
MATERIAL:

BODY - GLASS REINFORCED POLYESTER UL94V-0, COLOR - BLACK
CONTACTS - COPPER ALLOY

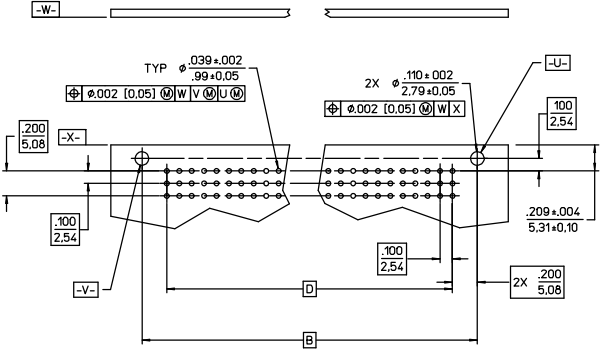
CONTACTS FINISH: 30 MICRONS [0.762 MICRONS] MIN GOLD IN CONTACT AREA
200 MICRONS [5.08 MICRONS] MIN TIN/LEAD ALLOY ON CONTACT TAILS
50 MICRONS [1.27 MICRONS] MIN NICKEL UNDERPLATE ALL OVER



VIEW Y
SCALE 4:1



VIEW Z
SCALE 4:1



SUGGESTED DRILL HOLE PATTERN

REFERENCE:
SE93320, RPI672U30RB-10

LINEAR MEASURE:		INCH	INCH (mm)	RT ANGLE PIN HEADER REV POL CARD EXTENDER CONN			
THIRD ANGLE PROJECTION		CAT NO RPI672U30PB-11 (SEE TABLE)		SCALE		2:1	
DRAWN		PJT 3-10-89		DESIGN		PJB 3-08-89	
CHECKED		PJB 3-10-89		MKT		TFK 3-03-89	
UNLESS OTHERWISE SPECIFIED		DRAWING NO		REV		K	
NO OF DECIMAL PLACES IN INCHES		INCH (mm)		DRAWING NO		REV	
ONE PLACE		±.1 (±2.54)		DRAWING NO		REV	
TWO PLACES		±.02 (±0.5)		DRAWING NO		REV	
THREE PLACES		±.005 (±0.13)		DRAWING NO		REV	
ANGLES °/1°		INCH (mm)		DRAWING NO		REV	



SHEET 3 OF 3

DWG RELEASED TO CENTRAL FILE 3-10-89 CAD APPROVAL PJB 3-10-89

CAT. NO SHOWN: RPI672U30PB-11