



Insulated Terminals Hi Alumina, Ceramic

Bifurcated Refer to Figure 1445

External Threads

Part No.	"T" Thread	U	W	X	Y	Z	Terminal	DWV
1445A	6-32	.188	.250	.188	.312	.550	1309	2800
1445B	6-32	.188	.250	.250	.312	.550	1309	2800
1445C	6-32	.188	.250	.312	.312	.550	1309	2800
1445D	6-32	.188	.250	.375	.312	.550	1309	2800
1445E	4-40	.188	.250	.188	.312	.550	1309	2800
1445F	4-40	.188	.250	.250	.312	.550	1309	2800
1445G	4-40	.188	.250	.312	.312	.550	1309	2800
1445H	4-40	.188	.250	.375	.312	.550	1309	2800
1465A	6-32	.230	.312	.188	.359	.600	1280	3200
1465B	6-32	.230	.312	.250	.359	.600	1280	3200
1465C	6-32	.230	.312	.312	.359	.600	1280	3200
1465D	6-32	.230	.312	.375	.359	.600	1280	3200
1465E	4-40	.230	.312	.188	.359	.600	1280	3200
1465F	4-40	.230	.312	.250	.359	.600	1280	3200
1465G	4-40	.230	.312	.312	.359	.600	1280	3200
1465H	4-40	.230	.312	.375	.359	.600	1280	3200
1485A	2-56	.141	.188	.125	.203	.360	2000	2000
1485B	2-56	.141	.188	.218	.203	.360	2000	2000
1485C	4-40	.141	.188	.125	.203	.360	2000	2000
1485D	4-40	.141	.188	.218	.203	.360	2000	2000

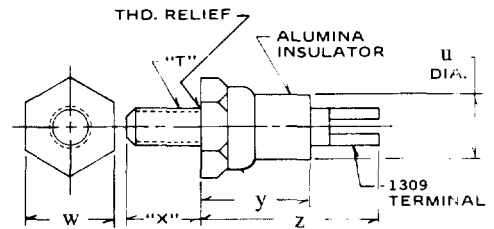


Fig. 1445

Bifurcated Refer to Figure 1446

Internal Threads

Part No.	Thread	U	W	Y	Z	Terminal	DWV
1446A	2-56	.188	.250	.359	.600	1309	2800
1446B	4-40	.188	.250	.359	.600	1309	2800
1466	6-32	.230	.312	.391	.630	1309	3200
1466A	4-40	.230	.312	.391	.630	1309	3200
1486A	4-40 x 3 Full	.141	.188	.266	.420	2000	1900
1486B	2-56 x 3 Full	.141	.188	.266	.420	2000	1900

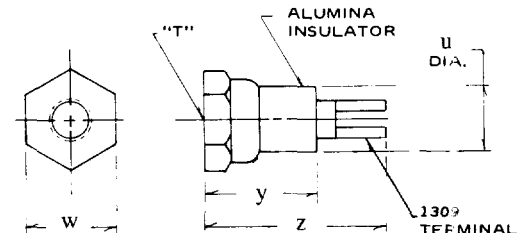


Fig. 1446

Bifurcated Refer to Figure 1447

Swage Type

Part No.	"D" Barrel Dia.	U	W	X	Y	Z	Terminal	DWV
1447A	.116	.188	.250	.075	.312	.550	1309	2800
1447B	.116	.188	.250	.105	.312	.550	1309	2800
1447C	.116	.188	.250	.135	.312	.550	1309	2800
1447D	.116	.188	.250	.165	.312	.550	1309	2800
1467A	.189	.230	.312	.054	.312	.550	1309	3200
1467B	.189	.230	.312	.094	.312	.550	1309	3200
1467C	.189	.230	.312	.125	.312	.550	1309	3200
1467D	.189	.230	.312	.156	.312	.550	1309	3200
1487A	.114	.141	.187	.054	.203	.360	2000	2000
1487B	.114	.141	.187	.094	.203	.360	2000	2000
1487C	.114	.141	.187	.125	.203	.360	2000	2000
1487D	.114	.141	.187	.156	.203	.360	2000	2000

Order Swage Tool 1447, 1467, 1487

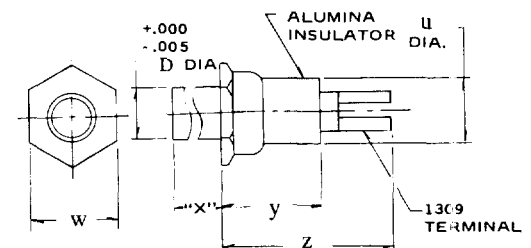


Fig. 1447

STANDARD PLATING SUFFIX TO PART NUMBER

SEE PAGE 93 FOR ALL PLATING OPTIONS

TERMINAL BASE
 -7 (Au over Cu) -5 (Sn over Cu)
 -4 (Sb over Cu) -5 (Sn over Cu)

TOLERANCE: .xxx ± .010, .xx ± .016 (ALL DIMS. BEFORE PLATING)