

DATA CONTAINED IN THIS DOCUMENT IS PROPRIETARY TO TROMPETER ELECTRONICS INC. AND SHALL NOT BE DISCLOSED, COPIED OR USED FOR PROCUREMENT OR MANUFACTURE WITHOUT EXPRESS WRITTEN PERMISSION OF TROMPETER ELECTRONICS INC.

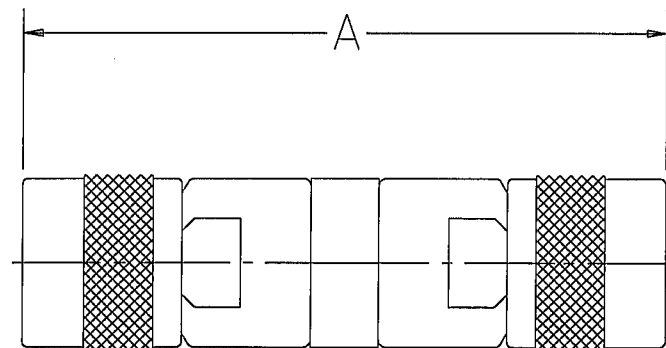
REVISIONS

305-0525

SH 1

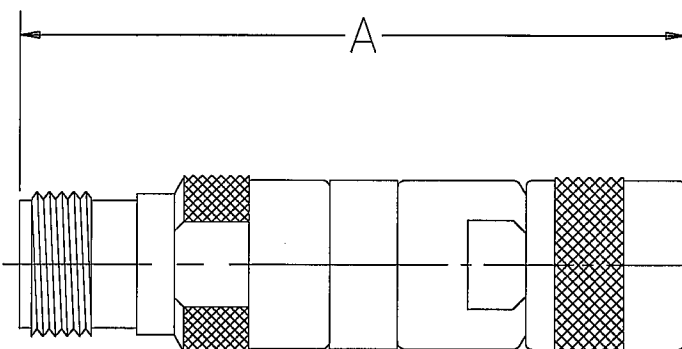
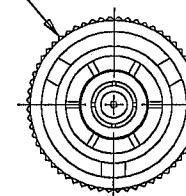
REV	DESCRIPTION	DATE	APPROVED
T	REVISED PER ECO 15316	2/3/04	WJ

DASH NO	MODEL NO DESCRIPTION	A DIM ±.050
-1	AD-PL155-A1-PL155	1.677
-2	AD-CJ3150-A1-PL3155	1.720
-3	AD-BJ3159-A1-PL3155	1.720
-4	AD-PL155FL-A1-PL155FL	1.677
-5	AD-CJ150-A1-PL155	1.720
-6	AD-CJ150-A1-PL155FL	
-7	AD-CJ3150-A6-PL3155	
-8	AD-PL3155-A1-PL3155	
-9	AD-BJ159-A1-PL155	
-10	AD-CJ150-A5-PL155	
-11	AD-CJ150-A6-PL155	
-12	AD-CJ3150-A4-PL3155	
-13	AD-CJ150-A1-PL3155	
-14	AD-CJ3150-A1-PL155	
-15	AD-CJ150-A1-CJ150FL	1.763
-16	AD-PL155-A1-PL3155	1.707
-17	AD-CJ150FL-A1-PL155	1.720
-18	AD-BJ159-A1-CJ150FL	1.763
-19	AD-CJ150-A9-PL155	1.720
-20	AD-CJ150-A1-CJ3150	1.763



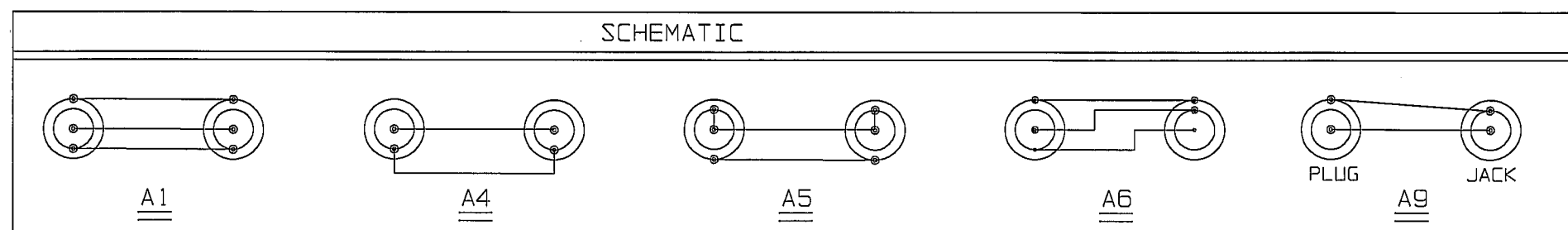
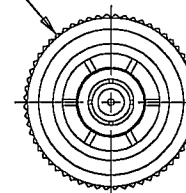
.484 MAX DIA

-1 SHOWN



.484 MAX DIA

-2 SHOWN



3. WITHIN SERIES ADAPTER, SUBMINIATURE TWINAX/TRIAX PLUG AND RECEPTACLE TO SUBMINIATURE TWINAX/TRIAX PLUG

2. FINISH: TFS-1A (NICKEL)

1. ALL DIM ARE IN INCHES

RED INDICATES ORIGINAL

INTERPRET DRAWING PER MIL-STD-100 DIMENSIONS ARE IN INCHES AND INCLUDE FINISH THICKNESS UNLESS OTHERWISE SPECIFIED		TOL.: UNLESS SPECIFIED .XX .XXX .XXXX ANGLES		TROMPETER ELECTRONICS, INC.
DRAWN PD	DATE 2-2-04	MATERIAL:	TITLE: SUBMINIATURE ADAPTER (150 SERIES)	
CHECKED WJ	DATE 2/3/04	FINISH:	SIZE CAGE CODE B 14949	DRAWING NO. 305-0525
QUALITY WJ	DATE 2/3/04		SCALE NONE	REV. T
APPROVED WJ	DATE 2/3/04		DO NOT SCALE DWG	DATE: 4/13/84
NEXT ASSY	CAD FILE NO 305-0525T			SHEET 1C