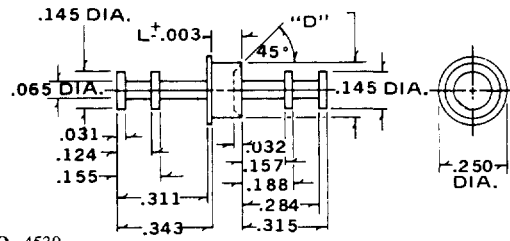




MIL-T-55155 Terminals

ORDER BY PART NO.	"D" ±.002	L NOM.	RECOMMENDATIONS		
			BD THICK	MTG HOLE	SWAGE TOOL
4530 B	.201	.093	.062	+.003	4530
4530 C	DIA.	.125	.094	.206 -.001	
4530 D		.156	.125	DIA.	

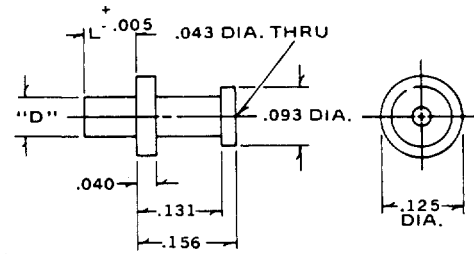
MIL-T-55155/15-7, 8, & 9



PART NO. 4530

ORDER BY PART NO.	"D" ±.002	L NOM.	RECOMMENDATIONS		
			BD THICK	MTG HOLE	SWAGE TOOL
4531 B	.062	.084	.062	+.003	4531
4531 C	DIA.	.115	.094	.066 -.001	
4531 D		.147	.125	DIA.	

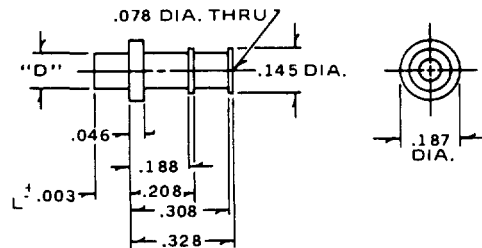
MIL-T-55155/16-1, 2, & 3



PART NO. 4531

ORDER BY PART NO.	"D" ±.002	L NOM.	RECOMMENDATIONS		
			BD THICK	MTG HOLE	SWAGE TOOL
4532 B	.112	.109	.062	+.003	4532
4532 C	DIA.	.141	.094	.116 -.001	
4532 D		.172	.125	DIA.	

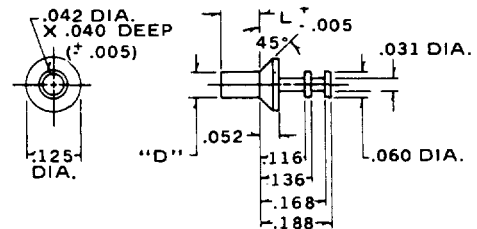
MIL-T-55155/17-1, 2, & 3



PART NO. 4532

ORDER BY PART NO.	"D" ±.002	L NOM.	RECOMMENDATIONS		
			BD THICK	MTG HOLE	SWAGE TOOL
4570 A		.062	.031	+.003	4570
4570 B	.060	.094	.062	.064	
4570 C	DIA.	.125	.094	-.001	
4570 D		.156	.125	DIA.	

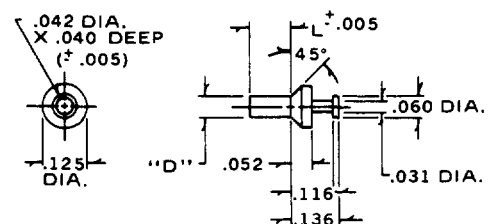
MIL-T-55155/23-1, 2, 3, & 4



PART NO. 4570

ORDER BY PART NO.	"D" ±.002	L NOM.	RECOMMENDATIONS		
			BD THICK	MTG HOLE	SWAGE TOOL
4572 A		.062	.031	+.003	4572
4572 B	.060	.094	.062	.064	
4572 C	DIA.	.125	.094	-.001	
4572 D		.156	.125	DIA.	

MIL-T-55155/25-1, 2, 3, & 4



PART NO. 4572

Standard Plating Suffix to Part Number

Terminal

See Page 93 for all plating options.

-4 (Sb over Cu)

TOLERANCE: .xxx ±.005 (ALL DIMS. BEFORE PLATING)

Winchester Electronics

400 Park Road • Watertown, Ct 06795-0500 • Phone:(860)945-5000 • FAX: (860)945-5191 • E-MAIL: useco@litton-wed.com