

Customer Information Sheet

DRAWING No.: M83-LMT2M3N60-0000-0000

SHEET 2 OF 2

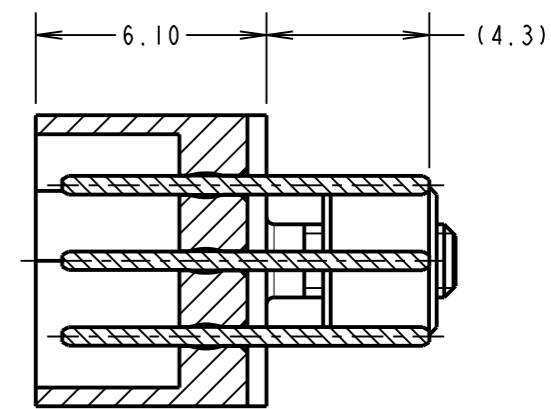
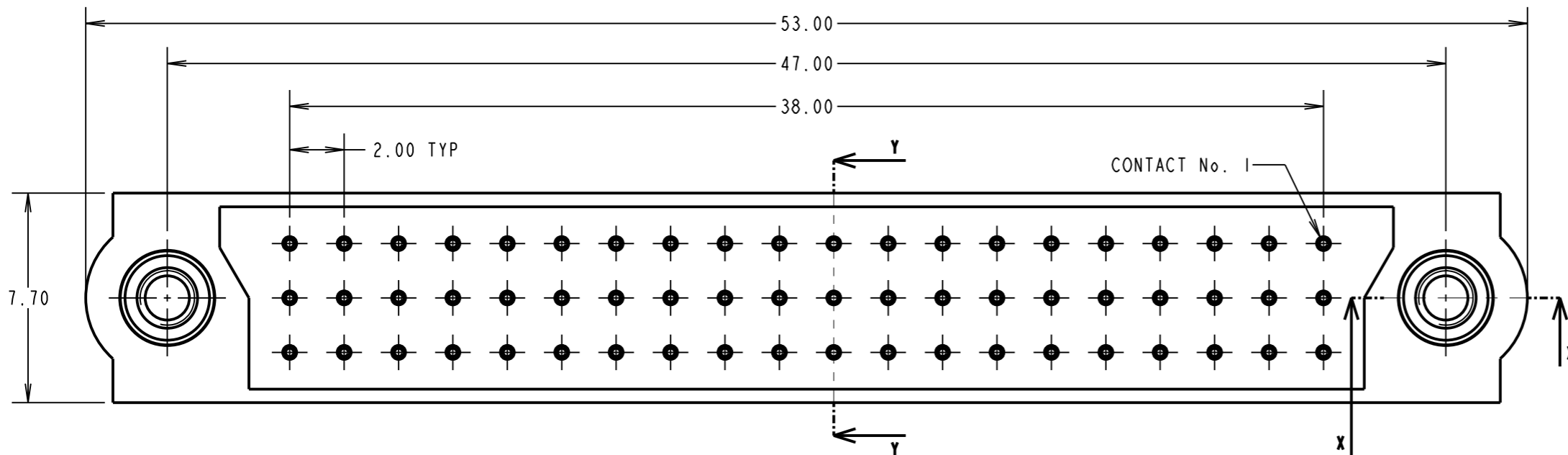
IF IN DOUBT - ASK

(C)

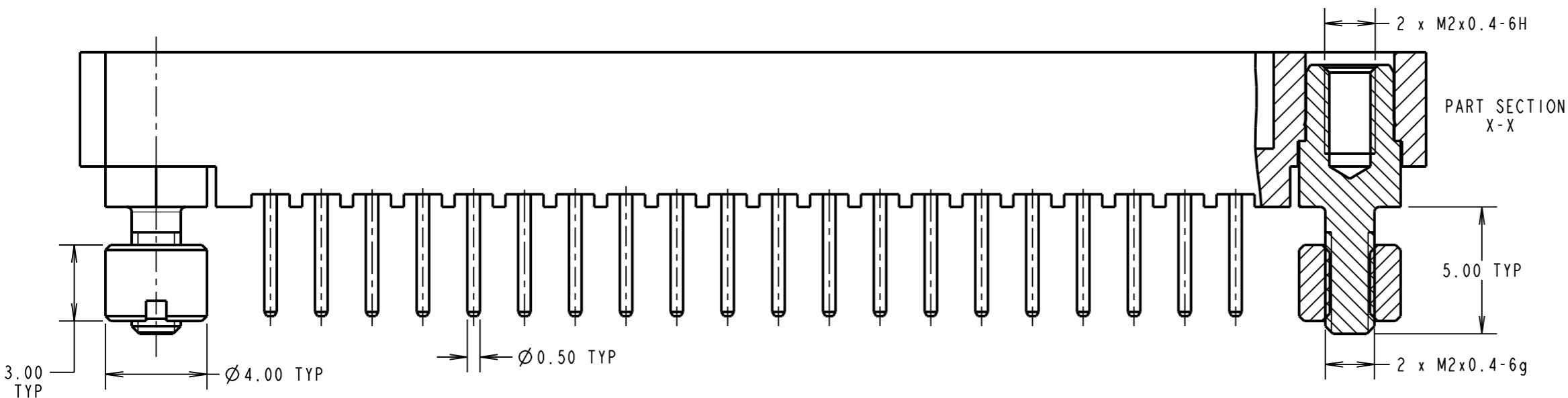
NOT TO SCALE

THIRD ANGLE PROJECTION

ALL DIMENSIONS IN mm



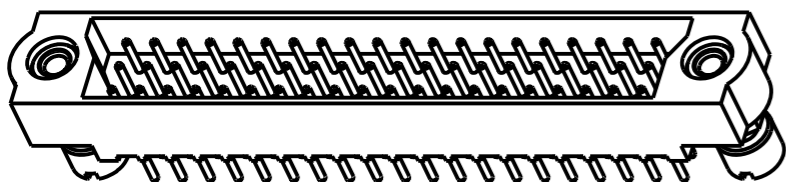
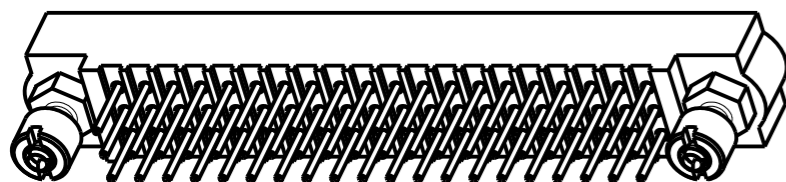
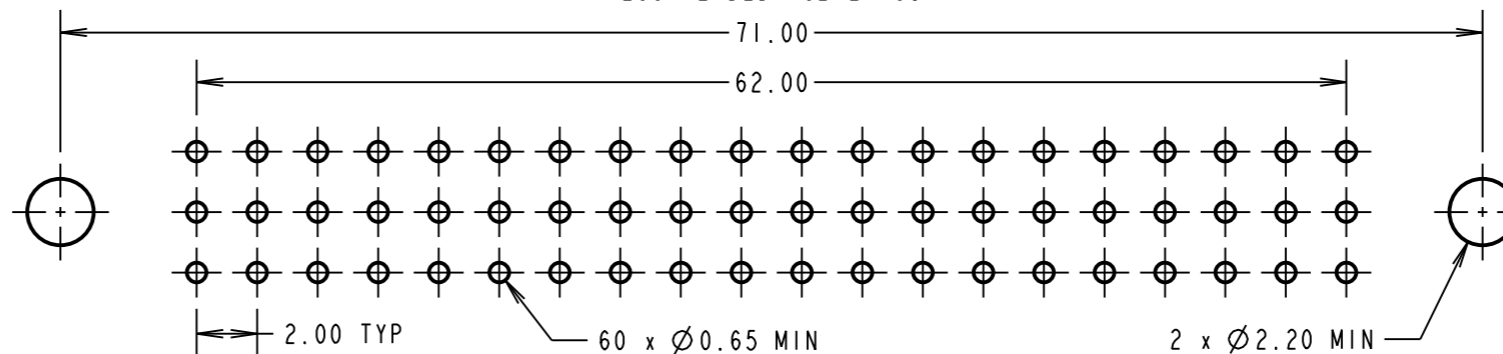
SECTION Y-Y



SPECIFICATIONS:

- MATERIAL:
- MOULDING = GLASS-FILLED PPS, UL94V-0, BLACK
- JACKSCREW = STAINLESS STEEL
- CONTACT = PHOSPHOR BRONZE
- FINISH:
- CONTACT = 0.75µ GOLD
- ELECTRICAL:
- CURRENT RATING AT 25°C = 3.0A MAX
- CURRENT RATING AT 85°C = 2.2A MAX
- CONTACT RESISTANCE = 25 mΩ MAX
- WORKING VOLTAGE = 120V AC/DC
- VOLTAGE PROOF = 360V AC/DC
- INSULATION RESISTANCE = 100 MΩ MIN
- MECHANICAL:
- DURABILITY = 500 OPERATIONS
- ENVIRONMENTAL:
- TEMPERATURE RANGE = -55°C TO +125°C
- PACKING:
- TRAY
- BOARD MOUNT NUTS PACKED SEPERATELY IN A BAG
- FOR COMPLETE SPECIFICATION, SEE COMPONENT SPECIFICATION C005XX (LATEST ISSUE)

RECOMMENDED PCB LAYOUT



SM	C	23.09.10	10946
NAME	ISS.	DATE	C/NOTE
APPROVED: S. MCCULLAGH			
CHECKED:		R. ADDE	
DRAWN:		R. ADDE	
CUSTOMER REF.:			
ASSEMBLY DRG:			

HARWIN

HARWIN USA
TEL: 603 893 5376
FAX: 603 893 5396
mis@harwin.com

HARWIN Europe (UK)
TEL: 023 9231 4545
FAX: 023 9231 4590
mis@harwin.co.uk

HARWIN Asia
TEL: +65 6 779 4909
FAX: +65 6 779 3868
mis@harwin.com.sg

THIS DRAWING AND ANY INFORMATION OR DESCRIPTIVE MATTER SET OUT HEREON ARE CONFIDENTIAL AND COPYRIGHT PROPERTY OF THE HARWIN GROUP AND MUST NOT BE DISCLOSED, LOANED, COPIED OR USED FOR MANUFACTURING, TENDERING OR FOR ANY OTHER PURPOSE WITHOUT THEIR WRITTEN PERMISSION.

TOLERANCES
X. = ±1mm
X.X = ±0.25mm
X.XX = ±0.10mm
X.XXX = ±0.01mm
ANGLES = ±5°
UNLESS STATED

MATERIAL:
SEE ABOVE

FINISH:
SEE ABOVE

S/AREA:
mm²

TITLE:
JACKSCREW DATAMATE 60 WAY
3-ROW VERTICAL MALE ASSY

DRAWING NUMBER:
M83-LMT2M3N60-0000-000

SHT 2 OF 2