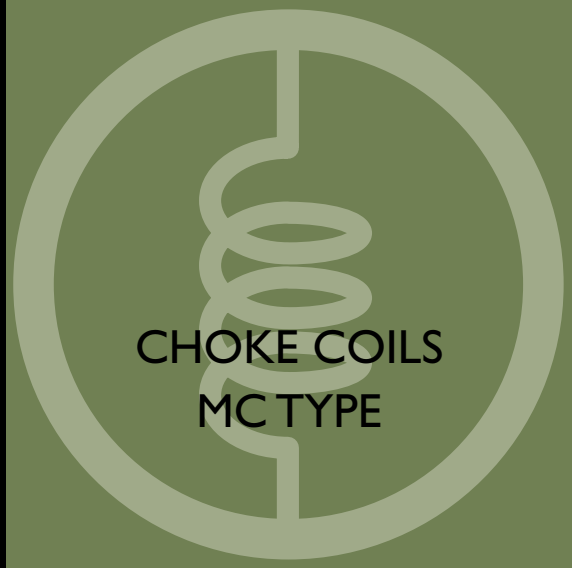


# MSC04 Series



CHOKE COILS  
MC TYPE

## TEST INSTRUMENTS

L.Q. : HP 4291A RF Impedance Analyzer

SRF : HP 4291A RF Impedance Analyzer

RDC : Milliohm Meter HP-4338B

IDC : HP 4261A Digital LCR Meter

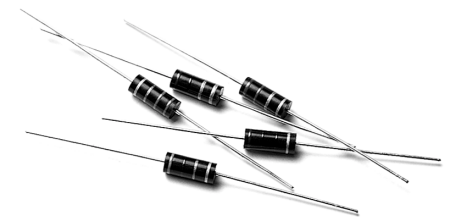
## FEATURES

Wide Range of Inductance

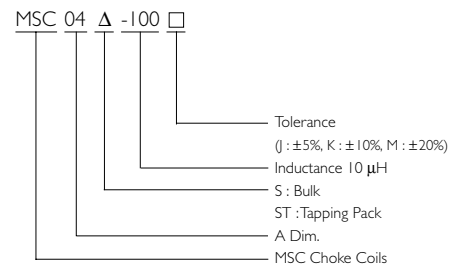
Sturdy Construction

Precision Performance

High Reliability, Uniform in Size, Ideal for Automat Insertion



## PRODUCT IDENTIFICATION



## DIMENSIONS

**L=0.22~560 $\mu\text{H}$**

FIG.	A	B
1	34.2 $\pm$ 0.254	10.4 $\pm$ 0.254
2	34.2 $\pm$ 0.254	10.4 $\pm$ 0.254

**L=680~1000 $\mu\text{H}$**

FIG.	A	B	C	$\phi\text{D}$	D	E	F	G
1	4.82 $\pm$ 0.254	11.18 $\pm$ 0.254	62 $\pm$ 3	0.65 $\phi$				
2	4.82 $\pm$ 0.254	11.18 $\pm$ 0.254	52.4 $\pm$ 1.5		5 $\pm$ 0.5	6 $\pm$ 1	3.2 <sup>0</sup>	0.65 $\phi$

Dimensions : mm

FIG.1

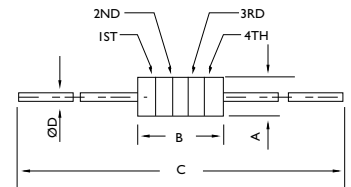
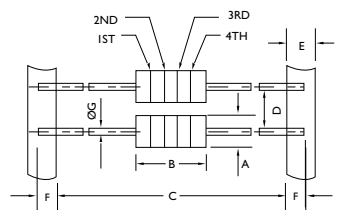


FIG.2





## ELECTRICAL PARAMETERS

ITEM MSC04 SERIES	INDUCTANCE L( $\mu$ H)	TEST FREQ. (MHz)	STANDARD SPEC.			
			Q Min.	S.R.F. Min. (MHz)	D.C. RESISTANCE Max.( $\Omega$ )	IDC (mA)
MSC04A-R22 □	0.22	25.2	40	250	0.067	800
MSC04A-R27 □	0.27	25.2	47	250	0.11	680
MSC04A-R33 □	0.33	25.2	46	250	0.13	620
MSC04A-R39 □	0.39	25.2	44	250	0.18	530
MSC04A-R47 □	0.47	25.2	44	235	0.25	450
MSC04A-R56 □	0.56	25.2	43	210	0.33	390
MSC04A-R68 □	0.68	25.2	45	190	0.45	330
MSC04A-R82 □	0.82	25.2	46	180	0.59	290
MSC04A-1R0 □	1.0	25.2	44	140	0.07	800
MSC04A-1R2 □	1.2	7.96	56	130	0.10	700
MSC04A-1R5 □	1.5	7.96	50	115	0.12	600
MSC04A-1R8 □	1.8	7.96	50	105	0.14	550
MSC04A-2R2 □	2.2	7.96	50	100	0.19	500
MSC04A-2R7 □	2.7	7.96	55	92	0.28	400
MSC04A-3R3 □	3.3	7.96	55	85	0.35	380
MSC04A-3R9 □	3.9	7.96	55	75	0.40	360
MSC04A-4R7 □	4.7	7.96	55	70	0.55	300
MSC04A-5R6 □	5.6	7.96	58	65	0.72	280
MSC04A-6R8 □	6.8	7.96	55	55	1.02	170
MSC04A-8R2 □	8.2	7.96	50	50	1.32	170
MSC04A-100 □	10	7.96	55	46	1.62	180
MSC04A-120 □	12	2.52	60	44	2.00	110
MSC04A-150 □	15	2.52	45	49	0.80	260
MSC04A-180 □	18	2.52	45	45	0.89	250
MSC04A-220 □	22	2.52	46	41	0.96	220
MSC04A-270 □	27	2.52	48	38	1.19	200
MSC04A-330 □	33	2.52	46	34	1.37	190
MSC04A-390 □	39	2.52	50	29	1.93	180
MSC04A-470 □	47	2.52	50	27	2.11	175
MSC04A-560 □	56	2.52	45	25	2.23	160
MSC04A-680 □	68	2.52	40	21	2.70	150
MSC04A-820 □	82	2.52	42	10.5	2.44	140
MSC04A-101 □	100	2.52	40	10	3.12	120
MSC04A-121 □	120	0.796	50	9.7	3.60	95
MSC04A-151 □	150	0.796	50	8.5	4.10	90
MSC04A-181 □	180	0.796	55	8.0	4.40	85
MSC04A-221 □	220	0.796	55	7.5	5.00	80
MSC04A-271 □	270	0.796	55	7.0	5.80	70
MSC04A-331 □	330	0.796	55	6.5	6.40	65
MSC04A-391 □	390	0.796	60	6.2	7.40	60
MSC04A-471 □	470	0.796	60	5.7	9.50	55
MSC04A-561 □	560	0.796	60	4.7	10.5	55
MSC04A-681 □	680	0.796	60	4.5	11.8	50
MSC04A-821 □	820	0.796	60	4.2	13.0	45
MSC04A-102 □	1000	0.796	60	3.8	17.5	60

\*Customers' Specifications are Welcome