

SPECIFICATIONS

Mechanical

Mating Force: 100gf max. per contact
Unmating Force: 10gf min. per contact
Durability: 100 Cycles

Electrical

Current Rating: 0.5A DC
Contact Resistance: 40mW max. (Initial) , 50mW max. (After)
Dielectrical Withstanding Voltage: 300V
Insulation Resistance: 100MW min.

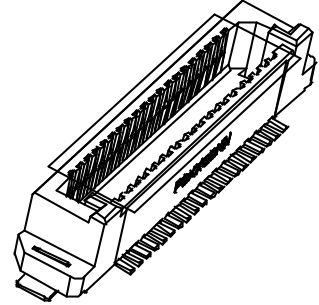
Physical

Housing: LCP, UL 94V-0 rated in Ivory White Color
Contact: Brass
Plating: 50u" min. Nickel Base Plating
 1~4u" min. Gold plating on Contact Area
 100u" min Pure Tin on Solder Tail Area
Metal Ear: Phosphor Bronze
Operating Temperature: -55°C to + 85°C

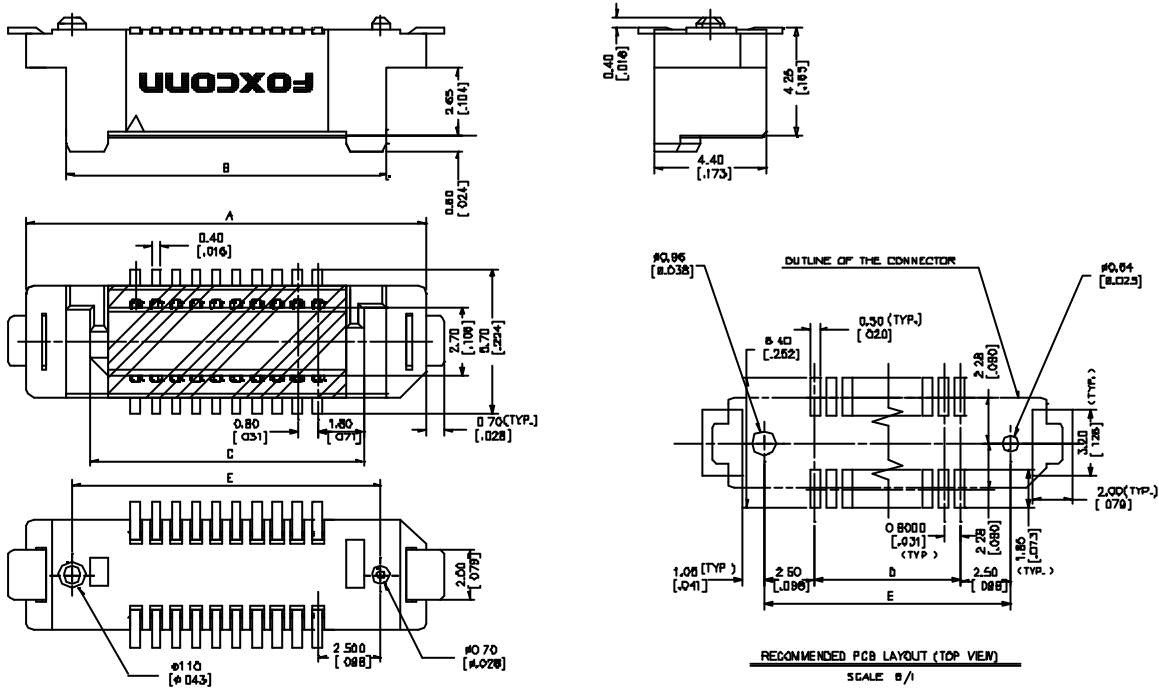
Board to Board Connector

QT80 Series
0.80 mm [.031"] Pitch
Vertical , Plug

Mated with QT81 Series



DRAWING



ORDERING INFORMATION

PRODUCT NO.: QT80***A-1111-*F

Fine Pitch
 Board To Board Conn.
 8=0.8[.031"] pitch
 0=Plug.
 Pos. NO.
 020=20Pin
 160=160Pin

LEAD FREE Package
 8=Tape & Reel W/PI-film
 Metal Ear
 1=W/ M/E
 Extend code
 Post:
 1=W/ Post
 Profile Height:
 1=4.25[.167"]
 Contact Area Plating:
 A=2-5u" Gold

	56 B	52.7	50 B	47.2	52.2
120	[2.197]	[2.074]	[2.000]	[1.859]	[2.059]
100	17.8	44.7	42.8	39.2	44.2
	[1.282]	[1.760]	[1.685]	[1.545]	[1.743]
80	39.8	36.7	34.8	31.2	36.2
	[1.551]	[1.445]	[1.370]	[1.229]	[1.425]
70	33.8	32.7	30.8	27.2	32.2
	[1.409]	[1.287]	[1.202]	[1.071]	[1.288]
60	31.8	28.7	26.8	23.2	28.2
	[1.252]	[1.130]	[1.055]	[.913]	[1.110]
50	27.8	24.7	22.8	19.2	24.2
	[1.094]	[.972]	[.896]	[.764]	[.953]
40	23.8	20.7	18.8	15.2	20.2
	[.937]	[.814]	[.740]	[.598]	[.795]
30	19.8	16.7	14.8	11.2	16.2
	[.780]	[.657]	[.572]	[.441]	[.639]
20	15.8	12.7	10.8	7.2	12.2
	[.622]	[.500]	[.420]	[.283]	[.480]
PCS NO	DN A	DN B	DN C	DN D	DN E