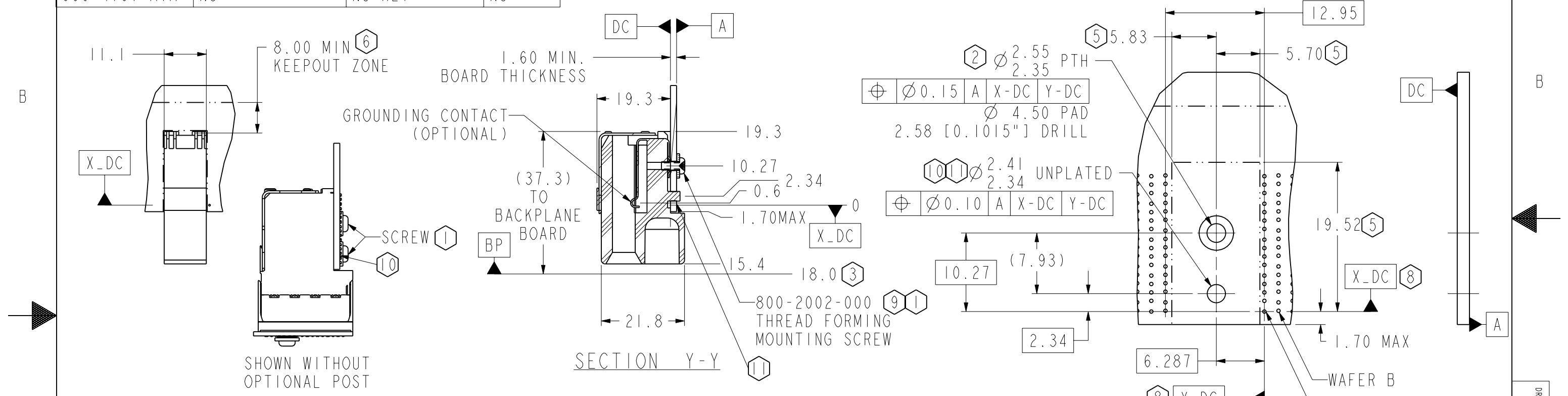


PART NUMBER	GROUND CONTACT	KEY POSITION	POST
960-410Y-A0B	YES	NO KEY	YES
960-410Y-A0A	NO	NO KEY	YES
960-410Y-A1B	YES	NO KEY	NO
960-410Y-A1A	NO	NO KEY	NO

ZONE	REV	SCR NUMBER	DESCRIPTION	BY	DATE	APPROVED
ALL	04		GEOM TOLERANCE	C.LEIGHTON	12/06/2006	D.MANTER
ALL	05		ADDED NO POST OPTION & 19.52 WAS 19.30	HCL-SS	12/11/2007	D.MANTER
ALL	06		UPDATED NOTES I AND II	HCL-MR	12/21/2007	A.PFHANL



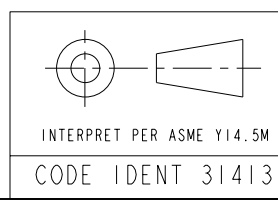
NOTE:

1. SCREW LENGTH AND PART NUMBER - DEPENDENT ON PCB THICKNESS
2. PLATED THROUGH HOLE TO CONNECT TO CHASSIS FOR FIRST MATE GROUND OPTION THOUGH GUIDE PIN: SEE TB-2149 FOR ROUTING GUIDELINES. USE UNPLATED THROUGH HOLE FOR UNGROUNDED MODULE
3. NOMINAL DIMENSION FOR FULLY SEATED CONNECTOR
4. FOR MATING GUIDE PIN DETAIL AND LOCATION SEE DRAWING C942-4100-500 FOR STANDALONE GUIDE PIN.
5. NO SURFACE TRACES IN KEEP-OUT ZONE.
6. FOR CONNECTOR REPAIRABILITY, USE KEEP OUT ZONE.
7. SEE TB-2104 FOR BOARD WEIGHT LIMITATIONS.
8. REFER TO C950-400A-500 FOR SIGNAL CONNECTOR DETAIL
9. INSTALLATION TORQUE SPECIFICATION= 3.5IN/LBS ±1.0 IN/LBS.
10. THROUGH HOLE MAY ALSO BE USED FOR ADDITIONAL SCREW WITH GUIDE/JOINER MODULE WITHOUT POST
11. THROUGH HOLE REQUIRED FOR WIDE GUIDE MODULES WITH POST. WIDE GUIDES USED AS A STIFFENER JOINER MODULE DO NOT HAVE A POST AND DO NOT REQUIRE THIS HOLE UNLESS THE ADDITIONAL SCREW IS USED.

DAUGHTERCARD REFERENCE

DAUGHTERCARD HOLE PATTERN
WIDE GUIDE/JOINER MODULE
CONNECTOR SIDE
SCALE 2/1

TOLERANCES		DESIGN	Amphenol TCS	
0.0	±0.25	07/07/06 C.LEIGHTON	A Division of Amphenol Corporation	
0.00	±0.13	DRAWN 12/06/2006 C.LEIGHTON	44 Simon Street, Nashua, NH, 03060 603.879.3000	
0.000	± -	CHK 08/09/2006 T.COHEN	TITLE DC WIDE GUIDE MODULE, 4 PAIR XCede	
ANGLES	± -	APVD 08/09/2006 D.MANTER	PART NO. SEE TABLE	
UNLESS OTHERWISE SPECIFIED DIMENSIONS ARE IN MM, DECIMAL MAKER IS PERIOD			DRAWING NO. C960-410Y-500 REV 06	
CUSTOMER USE DRAWING			ProePART 01109-DC-MODULE6 C960-410Z-500--DC4-W-GUIDED .dwg 1.3 4.3	
			SIZE B	SCALE 1/1



DRW NO. C960-410Y-500
 SH 1
 REV 06