

SPECIFICATIONS

Mechanical

Contact Retention Force: 0.15kg min.
Durability : 25 Cycles

Electrical

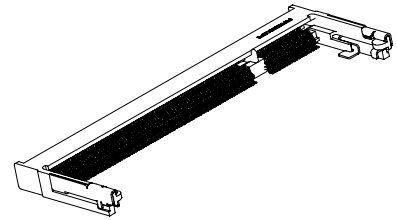
Voltage Rating: 25V
Current Rating: 0.3A
Contact Resistance: 50mΩ max.
Dielectric Withstanding Voltage: 250V AC/1 min.
Insulation Resistance: 100MΩ

Physical

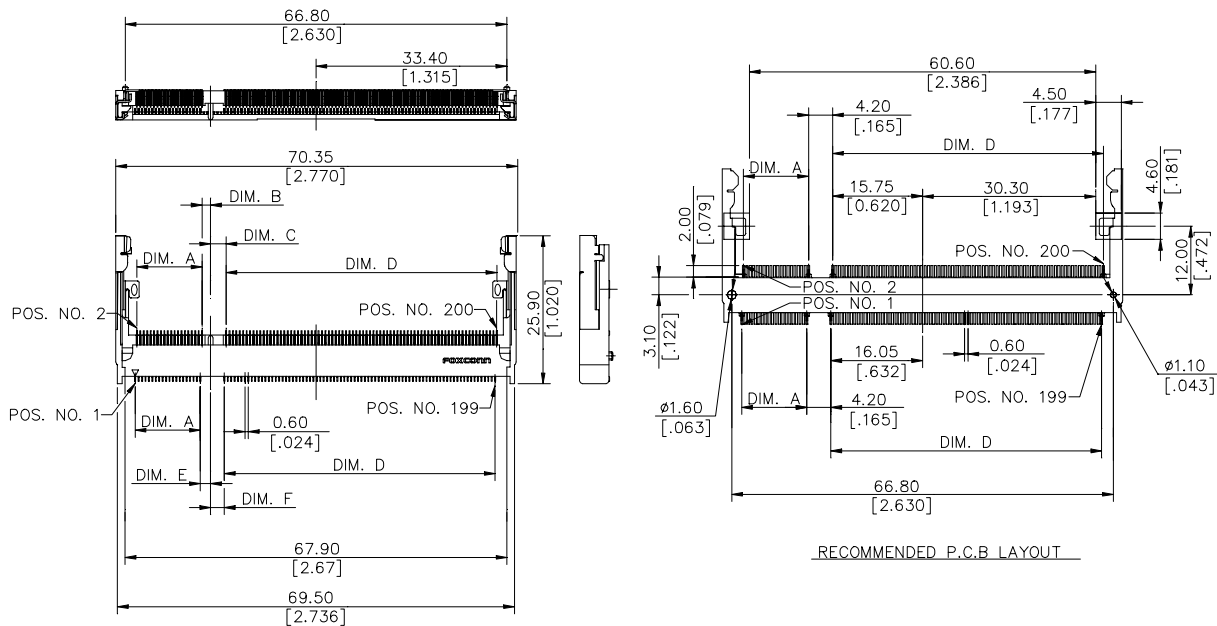
Housing: Thermoplastic, UL 94V-0 rated in Ivory Color
Contact: Copper alloy
Plating: See "ORDERING INFORMATION"
Metal Spring: Copper alloy
Operating Temperature: -40 to +85

DDR SO DIMM Socket

AS Series
5.2mm Height SMT Type
0.60mm [.024"] Pitch
200 Pos.



DRAWING



ORDERING INFORMATION

PRODUCT NO.: **A S 0 A4 2 6 - E 2 * N - * F**

Memory Module Socket — A
 Horizontal Type — S
 Single Row — 0
 No. of Pos. — A4=200 Pos.
 SMT Type — 2
 Contact Area Plating — 6=10u" Gold

— 2
 — *
 — N
 — *
 — F

F=Lead Free
 1=Hard Tray
 4=Soft Tray
 7=Tape Reel
 N=Normal Type
 S=Standard Type
 R=Reverse Type
 2=5.2mm Height
 E=DDR SO DIMM (Type II)

AS0A426-E2RN-*F	11.40 [.449]	2.70 [.108]	1.50 [.059]
AS0A426-E2SN-*F	47.40 [1.866]	1.80 [.071]	2.40 [.094]
P/N	DIM. D	DIM. E	DIM. F
AS0A426-E2RN-*F	47.40 [1.866]	2.40 [.094]	1.80 [.071]
AS0A426-E2SN-*F	11.40 [.449]	1.50 [.059]	2.70 [.108]
P/N	DIM. A	DIM. B	DIM. C