

# LGC-500

## SERIES

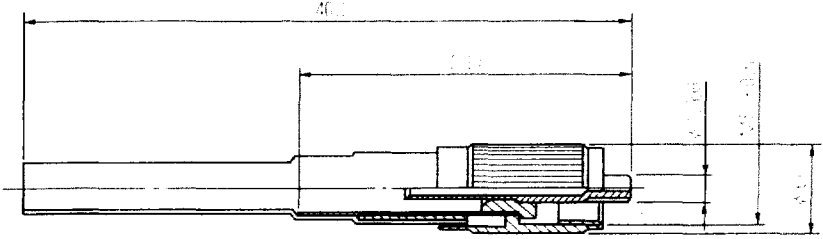
(JIS C5972: F03 Single-Core Optical Fiber Connectors)

- Small size and light weight
  - Zirconia ferrules are newly available, in addition to the press ferrules (G1).
- Key specifications

Item (conditions)	Standard value
Insertion Plug loss	50/125G   surface grinding: 1.0dB or less (average 0.63dB) 10/125SSM   projected spherical grinding: 0.7dB or less (average 0.19dB)
Compatible optical fiber cord	OFC2.8-Y-SSM-10/125 (JIS C6820) OFC2.8-Y-SG I -50/125 (JIS C6820)

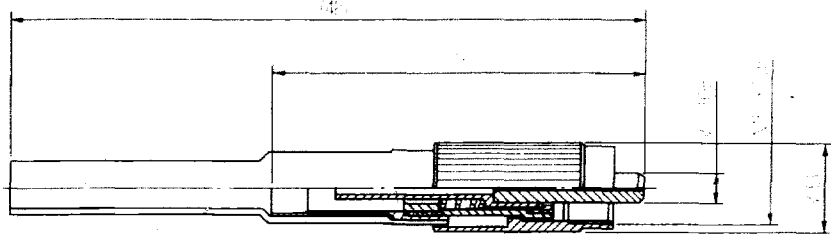
### PLUG

● LGC-P50 ( )



Note: This figure shows the temporarily mounted plug. The product is not assembled in the form of part.

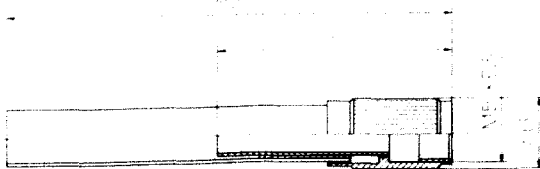
● LGC-PS50 ( )



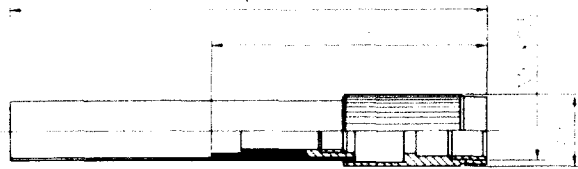
Part No.	JIS No.	Components
LGC-P504	CNF03PPM124E1	LGC-PH501 + LGC-PF504
LGC-P506	CNF03SPM126E1	LGC-PH501 + LGC-PF506
LGC-P508	CNF03SPM128E1	LGC-PH501 + LGC-PF508
LGC-PS503	CNF03SPM123D1	LGC-PH502 + LGC-PF503B
LGC-PS504	CNF03SPM124D1	LGC-PH502 + LGC-PF504B
LGC-PS505	CNF03SPM125D1	LGC-PH502 + LGC-PF505B
LGC-PS506	CNF03SPM126D1	LGC-PH502 + LGC-PF506B
LGC-PS507	CNF03SPM127D1	LGC-PH502 + LGC-PF507B
LGC-PS508	CNF03SPM128D1	LGC-PH502 + LGC-PF508B

### PLUG HOUSING

● LGC-PH501



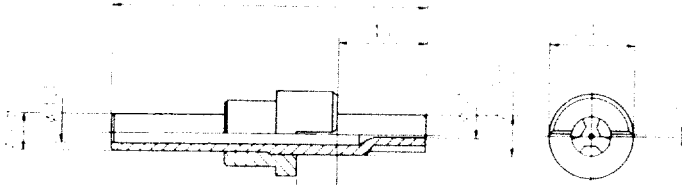
● LGC-PH502



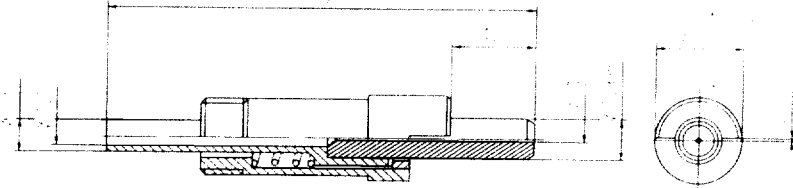
These figures show the temporarily mounted housing. The product is not assembled in the form of part.

## ■ FERRULE

### ● Press ferrule LGC-PF50( )



### ● Zirconia ferrule LGC-PFS50( )

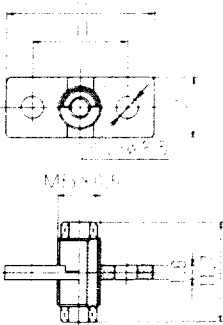


Part No.	φd(㎜)
LGC-PF504	0.124
LGC-PF506	0.126
LGC-PF508	0.128
LGC-PFS503	0.123
LGC-PFS504	0.124
LGC-PFS505	0.125
LGC-PFS506	0.126
LGC-PFS507	0.127
LGC-PFS508	0.128

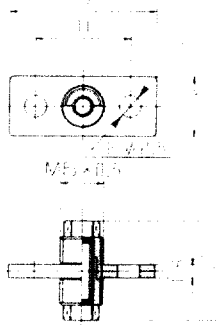
Note: LGC-PF50( ) cannot be used for the single-mode fiber.

## ■ ADAPTOR

### ● LGC-A501



### ● LGC-AS501

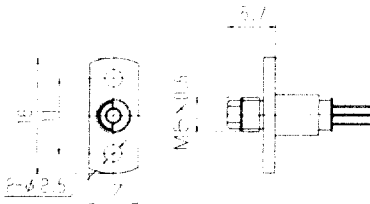


Part No.	JIS No.
LGC-A501	CNF03PAFE
LGC-AS501 <sup>term</sup>	CNF03PAFD

Note: LGC-AS501 is to be used in combination with the LGC-PS50( ) plug.

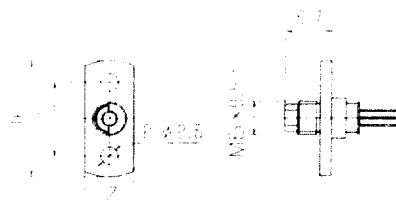
## ■ LIGHT EMITTING ELEMENT MODULE ■ LIGHT RECEIVING ELEMENT MODULE

### ● LGC-M500ED08-01



Item	Performance	Conditions
Fiber connected light output	70μW	I <sub>r</sub> =100mA, 50/125G  1m
Wavelength (center)	850nm	I <sub>r</sub> =100mA
Forward voltage	2V	I <sub>r</sub> =100mA
Spectrum half-value width	45nm	I <sub>r</sub> =100mA
Forward voltage	150mA	
Backward voltage	2V	
Operating temperature	-10~60°C	

### ● LGC-M500P108-01



Item	Performance	Conditions
Quantum efficiency	65%	V <sub>r</sub> =10V, λ=850nm
Rise time	1ns	V <sub>r</sub> =10V, λ=850nm
Fall time	1ns	R <sub>L</sub> =50Ω
Dark current	1nA	V <sub>r</sub> =10V
Capacity between terminals	2pF	V <sub>r</sub> =10V, f=1MHz
Wavelength range	500-1100nm	
Forward voltage	100mA	
Backward voltage	100V	
Operating temperature	-10~60°C	