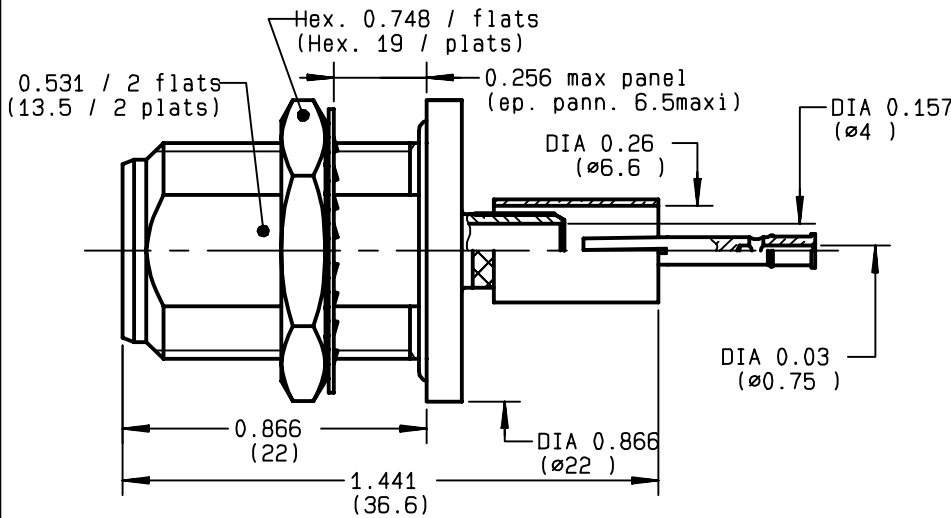


**STRAIGHT BULKHEAD JACK FULL CRIMP-TYPE  
PANEL SEAL CABLE 6/75 S**

**R162.335.000**  
**SERIES N 75**



PERCAGE PANNEAU  
MOUNTING HOLE

	MM		INCH	
	maxi	mini	maxi	mini
A	16.1	16	0.634	0.63
B	13.7	13.6	0.539	0.535

NOMINAL IMPEDANCE	<b>75</b> Ω
FREQUENCY RANGE	<b>0-1.5</b> GHz
TEMPERATURE RATING	<b>-55/+155</b> °C
V.S.W.R	<b>1.06</b> + x F(GHz)Maxi
RF INSERTION LOSS	<b>0.15</b> √F(GHz) dB Maxi
VOLTAGE RATING	<b>850</b> Veff Maxi
DIELECTRIC WITHSTANDING VOLTAGE	<b>1500</b> Veff Mini
INSULATION RESISTANCE	<b>5000</b> MΩMini
HERMETIC SEAL	<b>NA</b> Atm.cm <sup>3</sup> /s
LEAKAGE (pressurized only)	<b>NA</b>
MECHANICAL DURABILITY	<b>500</b> Cycles
WEIGHT	<b>31.9</b> gr
SPECIFICATION	

CABLES : **KX 6A**  
**RG 59**

OTHERS CHARACTERISTICS

CABLE RETENTION	<b>200</b>	N Mini
CENTER CONTACT RETENTION		
Axial force - mating end	<b>27</b>	N Mini
Axial force - opposite end	<b>27</b>	N Mini
Torque	<b>NA</b>	cm.N Mini
RECOMMENDED TORQUES		
Mating	<b>NA</b>	cm.N
Panel nut	<b>500</b>	cm.N
Clamp nut	<b>NA</b>	cm.N

CONNECTOR PARTS	MATERIALS	FINISH	(all values are given in micrometers)
BODY	BRASS	BBR 2	
OUTER CONTACT	BRASS	BBR 2	
CENTER CONTACT	BERYLLIUM COPPER	GOLD 0.5 OVER NICKEL 2	
INSULATOR	PTFE	-	
GASKET	SILICONE RUBBER	-	
OTHERS PIECES	BRASS	BBR 2	

GAUTIER

ISSUE <b>9733C00</b>	CREATION DATE <b>28/10/1994</b>	FILE PART-NUMBER
-------------------------	------------------------------------	------------------



**RADIALL**®

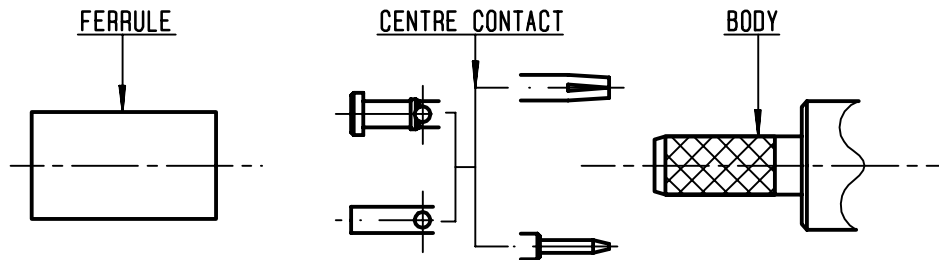
The information given here is subject to change without notice.  
Design changes may be in order to improve the product.

*Connect to the future*



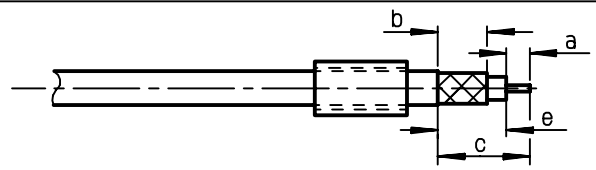
**R162.335.000**

ISSUE **9733C00** SERIES **N 75**



①

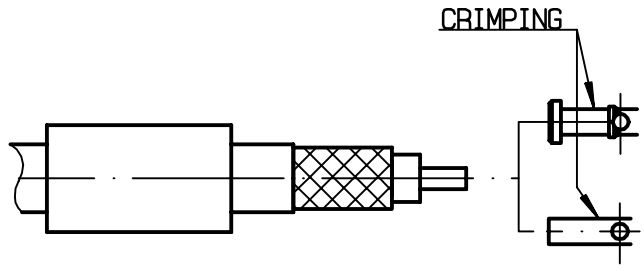
Slide onto the cable the ferrule  
Strip the cable .  
-  
-



Stripping	a	b	c	d	e
inch	0.177	0.315	0.63	0	0.453
mm	4.5	8	16		11.5

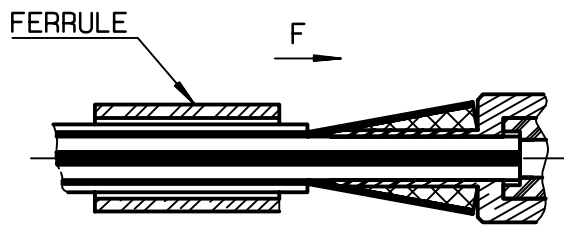
②

Slide on centre contact until it bottoms against cable dielectrique .  
Crimp centre contact .  
Crimping tool : R282 223 000 ( Hex. :0.068 )  
or R282 293 000 ( M22520/5-01 )  
+ dies R282 235 011 ( M22520/5-11 ) .  
-  
-  
-



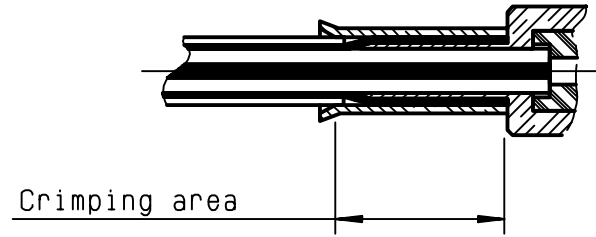
③

Fan the braid .  
Slide cable into the body until bottoms against insulator .  
Slide ferrule over the braid .  
(In direction F)



④

Crimp the ferrule with crimping tool R 282 223 000 ( Hex. : 0.255 ) or crimping tool R282 293 000 ( M22520/5-01 )  
+ dies R282 235 013 ( M22520/5-13 )  
Cut the excess of braid .  
-  
-  
-  
-



GAUTIER