

SINGLE-POLE, SINGLE-THROW
ABSORPTIVE

MECHANICAL SPECIFICATIONS:

Case Styles: S2 Outline (Two bit control)
S2-1 Outline (Single bit control)

Finish: Gold plate per MIL-G-45204, Chem film per MIL-C-5541

Connectors: SMA Female per MIL-C-39012

Bias & Control Pins: $\varnothing 0.02'' \times 0.15''$ long

Weight: 20g max

Mounting: $\varnothing 0.10''$ through holes (4) places

DC Bias: +15V +/-3V @ 80mA max
(-12 option) -15V +/-3V @ 50mA max

Control:	TTL 0 = Low Loss	E1 controls J2 – J1
(Standard)	TTL 1 = Isolation	E2 controls J3 – J1

Single Bit Control: E1=0: J2 – J1 low loss, J3 – J1 isolation (E2=N/C)
(-1 option) E1=1: J3 – J1 low loss, J2 – J1 isolation (E2=N/C)

Absorptive switch: Internal 50Ω terminations at J2 and J3 (in isolation mode).

Switching speed is defined as 50%TTL to 90% (t-on) and 50%TTL to 10%RF (t-off).

SCREENING:

Internal Visual per MIL-STD-883, Method 2017

Operating Temp: -55°C to +85°C

Temperature Cycle: -65°C to +100°C, 10 cycles

Storage Temp: -65°C to +125°C

Humidity: MIL-STD-202F, M103, Cond B

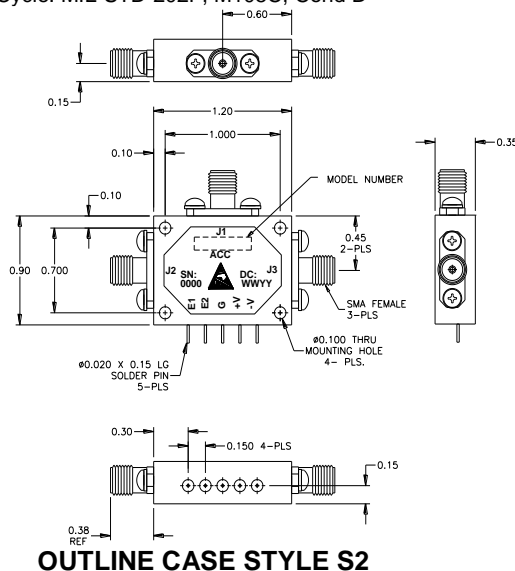
Shock: MIL-STD-202F, M213, Cond B

Altitude: MIL-STD-202F, M105, Cond B

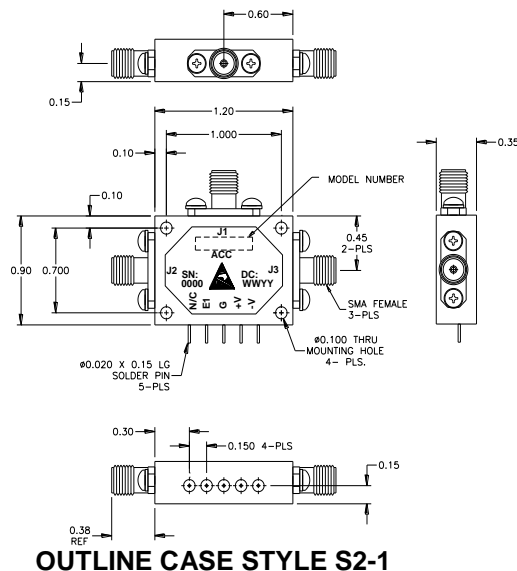
Vibration : MIL-STD-202F, M204, Cond B

Thermal Shock: MIL-STD-202F, M107, Cond A

Temperature Cycle: MIL-STD-202F, M105C, Cond D



OUTLINE CASE STYLE S2



OUTLINE CASE STYLE S2-1

PART NUMBER ORDERING INFORMATION:

- Add “-RC” suffix: RoHS-compliant
- Add “-5” suffix: +/-5V DC supplies
- Add “-5-RC” suffix: +/-5V DC supplies, RoHS-compliant
- Add “-12” suffix: +/-12V to 18V DC supplies
- Add “-12-RC” suffix: +/-12V to 18V DC supplies, RoHS-compliant
- Add “-1”: Single bit logic control
- Add “-1-RC” suffix: Single bit logic control, RoHS-compliant
- Add “-1-5” suffix: Single bit logic control, +/-5V DC supplies

- Add “-1-5-RC” suffix: Single bit logic control, +/-5V DC supplies, RoHS-compliant
- Add “-1-12” suffix: Single bit logic control, +/-12V to 18V DC supplies
- Add “-1-12-RC” suffix: Single bit logic control, +/-12V to 18V DC supplies, RoHS-compliant
- Add “-H” suffix: Hermetic seal (does not apply to RoHS-compliant)