

ATTENUATORS

2.9mm, DC - 18 GHz, 2 Watts

SPECIFICATIONS:

Models: 2112M/012, 2112F/012, 2112M/036, 2112F/036

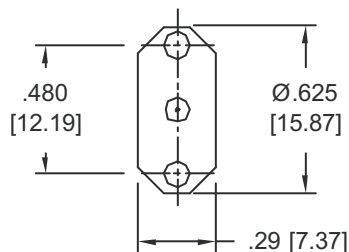
RoHS
Compliant

Electrical:

Frequency Range _____ DC - 18 GHz
Available dB Values _____ 0 - 12 dB
Attenuation Accuracy _____ In 1 dB Increments
0 - 6 dB _____ ± 0.3 dB
7 - 12 dB _____ ± 0.5 dB
VSWR
DC - 4 GHz _____ 1.15:1 Max.
4 - 12.4 GHz _____ 1.25:1 Max.
12.4 - 18 GHz _____ 1.50:1 Max.
Input Power _____ 2 Watts Avg. @ +25°C
Derated Linearly to 0.5 Watts @ +125°C
Peak Power _____ 250 Watts Max.
(5uSec Pulse, .05% Duty Cycle)
Impedance _____ 50 Ohms
Operating Temp Range _____ -65°C to +125°C

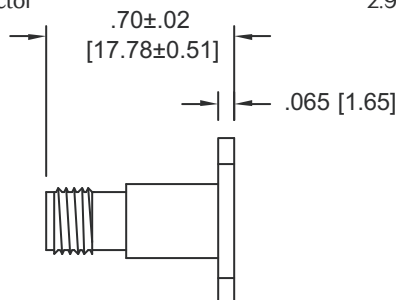
Mechanical:

2.9mm Connectors _____ Passivated Stainless Steel
Mates both Mechanically and Electrically with all
SMA, SMK and 3.5mm Series Connectors
Conductors _____ Gold Plated Beryllium Copper

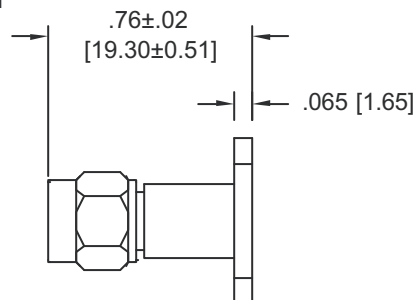



2-HOLE FLANGE
DETAIL - TYPICAL

Model Number: **2112F/XX**
2.9mm Female Connector



Model Number: **2112M/XX**
2.9mm Male Connector



MODEL NUMBER	PIN INTERFACE	RECOMMENDED INTERFACE PIN DIMENSIONS	 Spherical or Tapered end Recommended
2112X/12	Ø.012	Ø.0120 ±.0005 [0.305 ±0.013] x .050 ±.005 [1.27 ±0.13] LONG PIN	
2112X/36	Ø.036	Ø.0360 ±.0005 [0.914 ±0.013] x .09 [2.29] MAX. LONG PIN	

HOW TO ORDER:

Model Number: **2112X/XX-XX**
Connector Configuration _____ Mating Pin Diameter _____
F = 2.9mm Female 12 = Ø.012 PIN
M = 2.9mm Male 36 = Ø.036 PIN

Ordering Examples:

Model Number: **2112F/12-6**
6 dB; 2.9mm Female; Accepts Ø.012 Pin

Model Number: **2112M/36-10**
10 dB; 2.9mm Male; Accepts Ø.036 Pin

Note: Dimensions in Brackets are Expressed in Millimeters and are for Reference Only.
Design, specifications are subject to change without notice. Contact factory for technical specifications before purchasing and/or use.

2112: REV-



Aeroflex / Inmet, Inc. 300 Dino Drive, Ann Arbor, MI 48103 • U.S.A.
888-244-6638 or 734-426-5553 • FAX: 734-426-5557
www.aeroflex-inmet.com • inmet-sales@aeroflex.com