

FEATURES AND SPECIFICATIONS

Features and Benefits

- Sizes 2 to 24 circuits
- Standard with locking ramp
- Feed-to and feed-through versions
- Molded-in strain reliefs
- Optional covers, polarizing keys and pegs
- Double cantilever contacts preloaded in housing

Reference Information

Product Specification: PS-7660

Packaging: Bag

Tooling Information: See IDT tooling section

UL File No.: E29179

CSA File No.: LR19980

TUV File No.: R75108

Mates With: 41661, 41662, 41681, 41682, 41741, 41761,

41771, 41772, 41791 and 41792 headers

Use Molex Cable: 7382, 7517, 8868 and 40174

Designed In: Inches

Electrical

Voltage: 250V

Current: 5.0A (22, 20 and 18 AWG)

Contact Resistance: 20mΩ max.

Dielectric Withstanding Voltage: 2000V AC

Insulation Resistance: 200K MΩ min.

Mechanical

Contact Retention to Housing: 8 lb min.

Wire Pull-Out Force:

AWG	18	20	22	24
Horizontal (lb)	20.0	17.0	12.7	8.0
Vertical (lb)	5.0	3.8	3.5	2.4

Mating Force: 2 lb max.

Unmating Force: 0.5 lb min.

Physical

Housing: Nylon, UL 94V-2

Contact: Brass

Plating: Tin or Gold

Temperature: 0 to +75°C

Wire Range: 1.14mm (.045") to 2.41mm (.095") OD solid or stranded

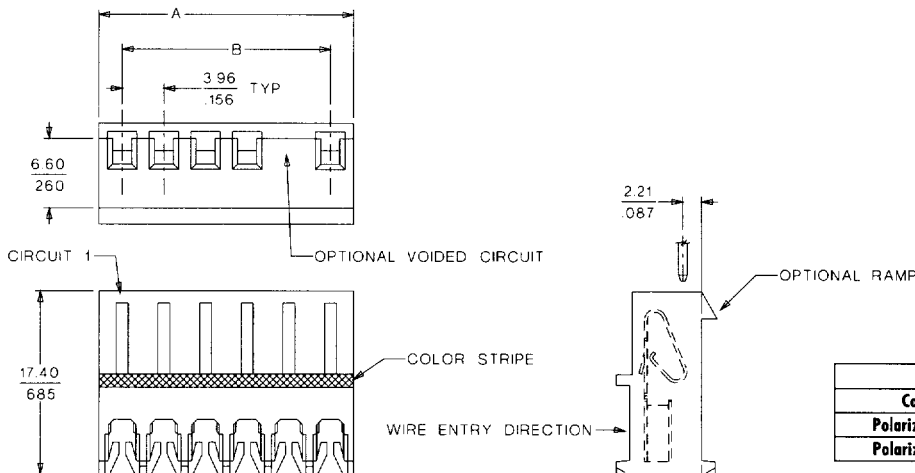
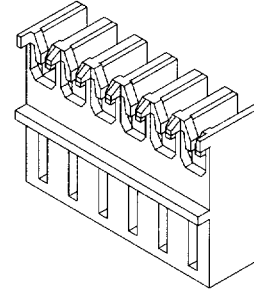
molex® 3.96mm (.156") Pitch
KK®

Connector

7675

IDT

Double Cantilever Contact



	Order No.
Cover	15-05-7XX4
Polarizing Key	15-04-0288
Polarizing Peg	15-04-0291

ORDERING INFORMATION AND DIMENSIONS

Order No.				Style	Color	Types of Wire Terminated
With Locking Ramp		Without Locking Ramp				
Tin	Gold	Tin	Gold			
09-06-0XX8	26-32-9XX0	09-07-0XX8	*	Feed-to	Yellow	18 AWG solid or fused stranded
09-06-0XX7	26-32-9XX4	09-07-0XX7	*	Feed-through		
09-06-1XX8	26-32-7XX4	09-07-1XX8	*	Feed-to	Red	20 AWG solid or fused stranded, and 18 AWG stranded wire
09-06-1XX7	26-32-7XX2	09-07-1XX7	*	Feed-through		
09-06-2XX8	*	09-07-2XX8	*	Feed-to	Blue	20 AWG stranded
09-06-2XX7	*	09-07-2XX7	*	Feed-through		
09-06-3XX8	26-32-9XX3	09-07-3XX8	*	Feed-to	Green	26 and 27 AWG stranded, fused stranded, and 24 AWG stranded wire
09-06-3XX7	*	09-07-3XX7	*	Feed-through		
09-06-5XX8	26-32-9XX5	09-07-5XX8	*	Feed-to	Black	24 and 22 AWG solid or fused stranded, and 22 AWG stranded wire
09-06-5XX7	*	09-07-5XX7	*	Feed-through		

Replace XX with no. of circuits, 02-24

Circuits	Dimension	
	A	B
2	8.38 (.330)	3.96 (.156)
3	12.34 (.486)	7.92 (.312)
4	16.31 (.642)	11.89 (.468)
5	20.27 (.798)	15.85 (.624)
6	24.23 (.954)	19.81 (.780)
7	28.19 (1.110)	23.77 (.936)

Circuits	Dimension	
	A	B
8	32.16 (1.266)	27.74 (1.092)
9	36.12 (1.422)	31.70 (1.248)
10	40.08 (1.578)	35.66 (1.404)
11	44.04 (1.734)	39.62 (1.560)
12	48.00 (1.890)	43.59 (1.716)
13	51.97 (2.046)	47.55 (1.872)

Circuits	Dimension	
	A	B
14	55.93 (2.202)	51.51 (2.028)
15	59.89 (2.358)	55.47 (2.184)
16	63.86 (2.514)	59.44 (2.340)
17	67.82 (2.670)	63.40 (2.496)
18	71.78 (2.826)	67.36 (2.652)
19	75.74 (2.982)	71.32 (2.808)

Circuits	Dimension	
	A	B
20	79.70 (3.138)	75.28 (2.964)
21	83.67 (3.294)	79.25 (3.120)
22	87.63 (3.450)	83.21 (3.276)
23	91.59 (3.606)	87.17 (3.432)
24	95.55 (3.762)	91.14 (3.588)

* Contact Inside Sales for ordering information
Note: Some wires require deviation from chart

