

NOTES :

- 1) MATERIALS :  
HOUSING : NYLON, GLASS-FILLED, UL94V-0, COLOR - SEE CHART  
TERMINALS : PHOSPHOR BRONZE, .012/(0.30)  
FITTING NAILS : BRASS ALLOY, .010/(0.25)
- 2) FINISH :  
TERMINAL PLATING OPTIONS : (SEE TABLE)  
(A) SELECT GOLD IN CONTACT AREA: .000050/(0.00127) MIN.,  
\*SELECT MATTE TIN IN PC TAIL AREA: .000100/(0.00254) MIN.,  
WITH OVERALL NICKEL UNDERPLATE: .000050/(0.00127) MIN.  
(B) SELECT GOLD IN CONTACT AREA: .000030/(0.00076) MIN.,  
\*SELECT MATTE TIN IN PC TAIL AREA: .000100/(0.00254) MIN.,  
WITH OVERALL NICKEL UNDERPLATE: .000050/(0.00127) MIN.  
(C) SELECT GOLD IN CONTACT AREA: .000015/(0.00038) MIN.,  
\*SELECT MATTE TIN IN PC TAIL AREA: .000100/(0.00254) MIN.,  
WITH OVERALL NICKEL UNDERPLATE: .000050/(0.00127) MIN.
- FITTING NAILS :  
\*100 MICROINCHES MATTE TIN OVER 50 MICROINCHES NICKEL UNDERPLATE  
\*THE PRIMARY SHIPPING CARTON WILL BE LABELED "ELV AND  
RoHS COMPLIANT". CARTONS WITHOUT THIS LABEL MAY  
CONTAIN PRODUCT WITH TIN-LEAD IN THE PC TAIL AREA.
- 3) PRODUCT SPECIFICATION : PS-43743-001
- 4) COPLANARITY SPECIFICATIONS:  
WITH THE MODULAR JACK SITTING ON A LEVEL SURFACE, THE MAXIMUM GAP BETWEEN  
THE LEVEL SURFACE AND ALL TERMINAL TAILS AND BOTH FITTING NAILS IS .006/(0.15).
- 5) FOR ASSEMBLIES HAVING VOIDED CIRCUITS, THE TAIL PORTION IS CUT  
AND REMOVED. THE MATING PORTION OF THE TERMINAL REMAINS INTACT.  
VOIDED CIRCUITS MUST BE THE SAME FOR BOTH PORTS.
- 6) CONVECTION SOLDERING TECHNOLOGY SHOULD BE USED WHEN GANGING MODULAR  
JACKS WITH INBOARD NAILS SIDE-BY-SIDE.
- 7) THIS PART CONFORMS TO CLASS B REQUIREMENTS OF COSMETIC  
SPECIFICATION PS-45499-002.

PC BOARD LAYOUT FOR  
8 POSITION HOUSING  
(COMPONENT SIDE OF BOARD)

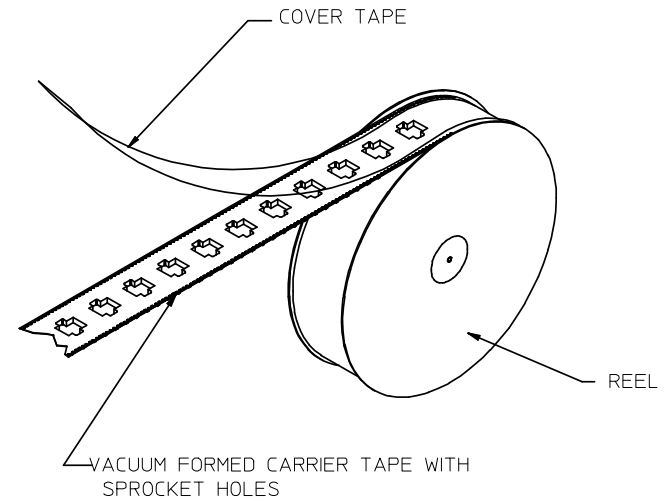
PC BOARD LAYOUT FOR  
6 POSITION HOUSING  
(COMPONENT SIDE OF BOARD)

2	G1
1	G2
	SHREV

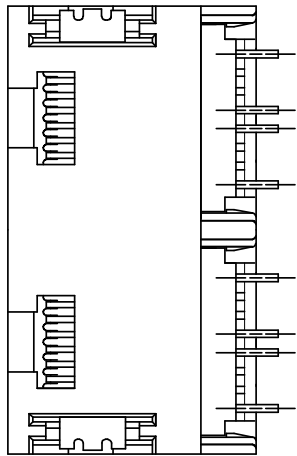
<b>REVISED NOTES</b> EC NO: UCP2009-1244 DRAWN: KLOSTNER 2008/12/10 CHKD: JEBEL 2008/12/10 APPR: FBMITH 2008/12/10 G2	DESCRIPTION QUALITY SYMBOLS ▽=0 ▽=0	GENERAL TOLERANCES (UNLESS SPECIFIED)		DIMENSION STYLE <b>IN/MM</b>	SCALE <b>1:1</b>	DESIGN UNITS <b>INCH</b>	THIRD ANGLE PROJECTION
		4 PLACES ± --- ± --- 3 PLACES ± --- ± .010 2 PLACES ± .025 ± .015 1 PLACE ± 0.38 ± --- ANGULAR ± 1/2°	DRAWN BY MUELLER DATE 98/06/11	DATE 98/06/11	TITLE <b>4, 6, &amp; 8 CIRCUIT DUAL PORT SMT MODULAR JACK W/ FLUSH MOUNT NAILS</b>	MOLEX INCORPORATED	SHEET NO. <b>1 OF 2</b>
		DRAFT WHERE APPLICABLE MUST REMAIN WITHIN DIMENSIONS	APPROVED BY EDGLEY DATE 98/06/17	MATERIAL NO. <b>SEE SHT 2</b>	DOCUMENT NO. <b>SD-44193-001</b>	MOLEX	SHEET NO. <b>1 OF 2</b>
		THIS DRAWING CONTAINS INFORMATION THAT IS PROPRIETARY TO MOLEX INCORPORATED AND SHOULD NOT BE USED WITHOUT WRITTEN PERMISSION					

	13	12	11	10	9	8	7	6	5	4	3	2	1
	ASSEMBLY ITEM NO.	CONNECTOR SIZE	CIRCUIT SIZE	TERMINAL PLATING	TAPE & REEL PACKAGING NO.	VOIDED CIRCUITS	HOUSING COLOR						
J	44193-0001	8	4	A	PK-70873-7004	NA	BLACK						
	44193-0002	8	6	A	PK-70873-7004								
	44193-0003	8	8	A	PK-70873-7004								
I	44193-0004	6	4	A	PK-70873-7003								
	44193-0005	6	6	A	PK-70873-7003								
	44193-0006	8	4	B	PK-70873-7004								
H	44193-0007	8	6	B	PK-70873-7004								
	44193-0008	8	8	B	PK-70873-7004								
	44193-0009	6	4	B	PK-70873-7003								
	44193-0010	6	6	B	PK-70873-7003								
G	44193-0011	8	4	C	PK-70873-7004								
	44193-0012	8	6	C	PK-70873-7004								
	44193-0013	8	8	C	PK-70873-7004								
	44193-0014	6	4	C	PK-70873-7003								
F	44193-0015	6	6	C	PK-70873-7003								
	44193-0016	6	2	A	PK-70873-7003								
	44193-0017	6	2	B	PK-70873-7003								
E	44193-0018	6	2	C	PK-70873-7003								

HOUSING SIZE	CIRCUIT SIZE	DIM. A
6	6	.250 (6.35)
6	4	.150 (3.81)
6	2	.050 (1.27)
8	8	.350 (8.89)
8	6	.250 (6.35)
8	4	.150 (3.81)



TAPE AND REEL PACKAGING



TYPICAL VIEW SHOWING VOIDED CIRCUIT  
(CIRCUITS 2,3,6,7 SHOWN VOIDED)

<b>OBSOLETE 441930019</b> EC NO: UCP2008-1189 DRAWN: JBELL 2007/11/30 CHKD: LSCHMIDT 2008/02/20 APPR: FSMITH 2008/03/04	QUALITY SYMBOLS 	GENERAL TOLERANCES (UNLESS SPECIFIED)		DIMENSION STYLE <b>IN/MM</b>		SCALE <b>4:1</b>	DESIGN UNITS <b>INCH</b>	THIRD ANGLE PROJECTION	
		4 PLACES ± --- ± ---	3 PLACES ± --- ± .010	DRAWN BY MUELLER	DATE 98/06/11	TITLE <b>2 PORT SMT. JACK ASSY W/FLUSH MOUNT NAILS</b>			
		2 PLACES ± 0.25 ± .015	1 PLACE ± 0.38 ± ---	CHECKED BY ROBERTS	DATE 98/06/16	MOLEX INCORPORATED			
		ANGULAR ± 1/2°		APPROVED BY EDGLEY	DATE 98/06/17	DOCUMENT NO. <b>SD-44193-001</b>	SHEET NO. <b>2 OF 2</b>		
DRAFT WHERE APPLICABLE MUST REMAIN WITHIN DIMENSIONS		SEE CHART		THIS DRAWING CONTAINS INFORMATION THAT IS PROPRIETARY TO MOLEX INCORPORATED AND SHOULD NOT BE USED WITHOUT WRITTEN PERMISSION					