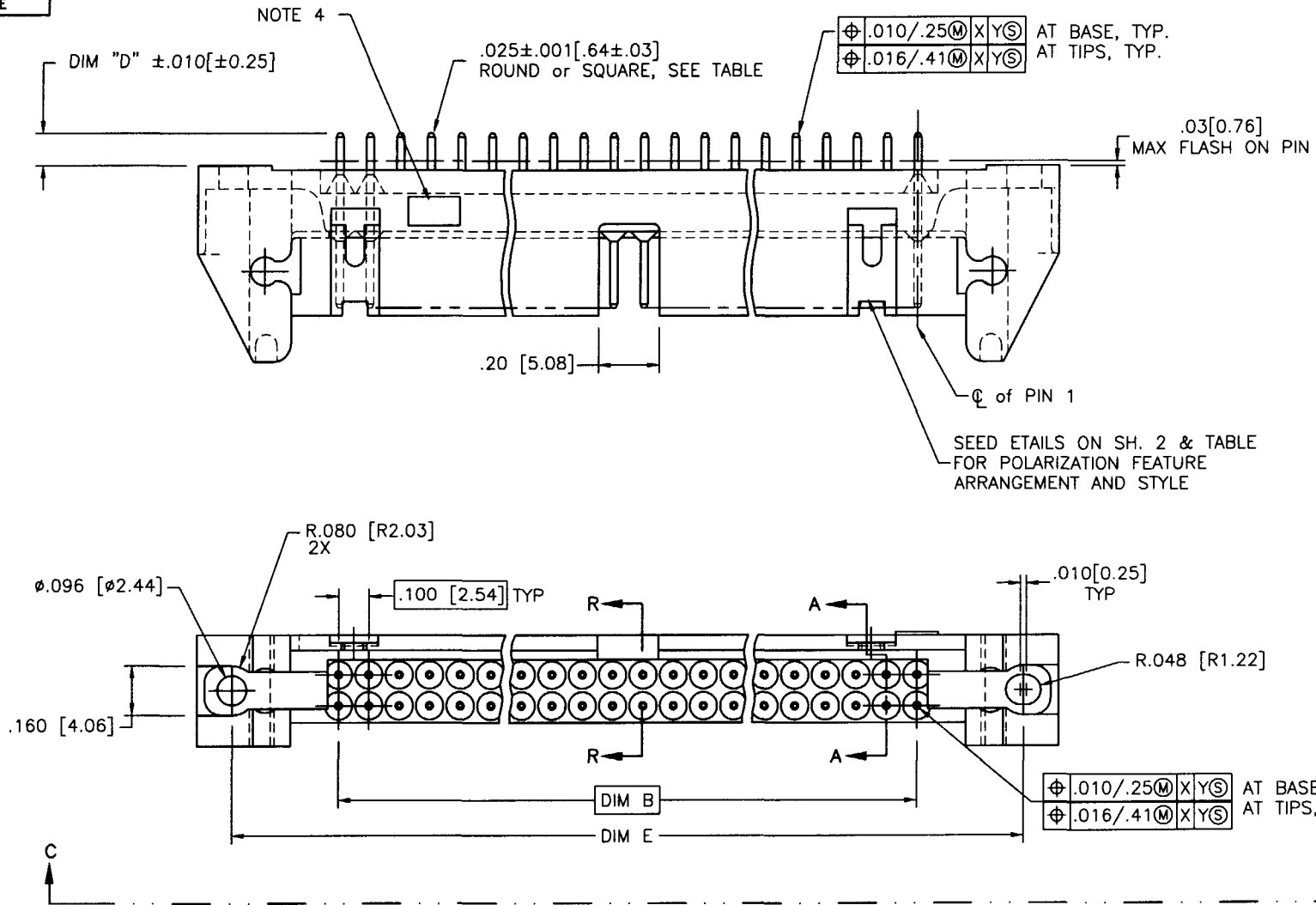


Tous droits strictement réservés. Reproduction ou communication à des tiers interdite sous quelque forme que ce soit sans autorisation écrite du propriétaire. Propriété de FCI. Droits de reproduction FCI.



All rights strictly reserved. Reproduction or issue to third parties in any form whatever is not permitted without written authority from the proprietor. Property of FCI. Copyright FCI.

PRODUCT NUMBER  
SEE TABLE



|   |          |     |         |  |                    |          |          |                  |        |   |       |
|---|----------|-----|---------|--|--------------------|----------|----------|------------------|--------|---|-------|
| mat'l. code 16-508-036,<br>16-508-002, 16-508-131 |          |     |         | tolerances unless<br>otherwise specified |                    |          |          | CUSTOMER<br>COPY |        | Electronics<br>FCI <a href="http://www.fciconnect.com">www.fciconnect.com</a> |       |
| ltr   | ech no   | dr  | date    | linear                                   | .XX ±.01/.3        |          |          | projection       |        | title   |       |
| F   | V90880   | EPK | 4/6/99  |  | .XXX ±.005/0.13    |          |          |                  |        | QUICKIE HDR, STRAIGHT<br>3 WALL LATCH & EJECT                                 |       |
| G   | V90995   | EPK | 4/29/99 |  | .XXXX ±.0020/0.051 |          |          | INCH/MM          |        | product family QKE. HDR.  |       |
| H   | V91075   | EPK | 5/6/99  | angles                                   | 0° ±2°             |          |          | scale            |        | code  |       |
| J   | V00871   | EPK | 4/11/00 | dr                                       | J. SHREINER        | 1/15/90  | 2:1      |                  | size   |   | 213   |
| K   | V01240   | MDF | 5/11/00 | enr                                      | M. SMYK            | 11/15/90 |          |                  | dwg no |   | sheet |
|   |          |     |         |  | chr                | M. SMYK  | 11/15/90 |                  |        | 1 of 8  |       |
|   |          |     |         |  | appd               | M. SMYK  | 11/15/90 |                  |        | A 66207   |       |
| sheet   | revision | K   | K       | K  | K                  | K        | K        | K                |        |   |       |
| index   | sheet    | 1   | 2       | 3  | 4                  | 5        | 6        | 7                | 8      |   |       |

cage code  
22526

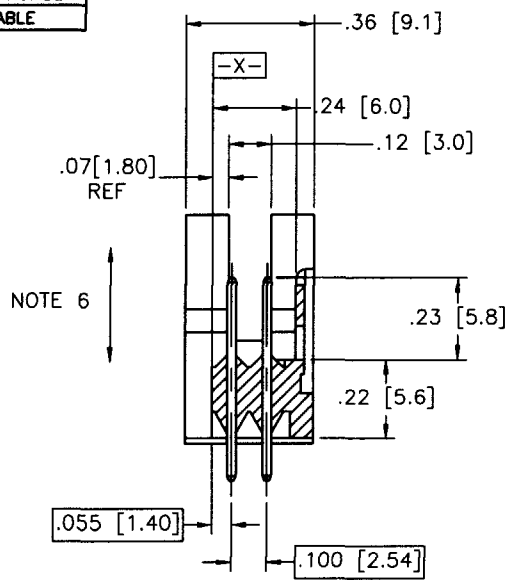
ACAD

Tous droits strictement réservés. Reproduction ou communication à des tiers interdite sous quelque forme que ce soit sans autorisation écrite du propriétaire. Propriété de FCI. Droits de reproduction FCI.

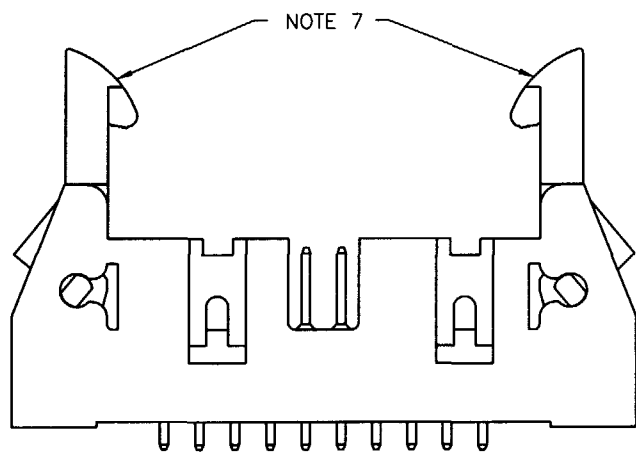
All rights strictly reserved. Reproduction or issue to third parties in any form whatever is not permitted without written authority from the proprietor. Property of FCI. Copyright FCI.



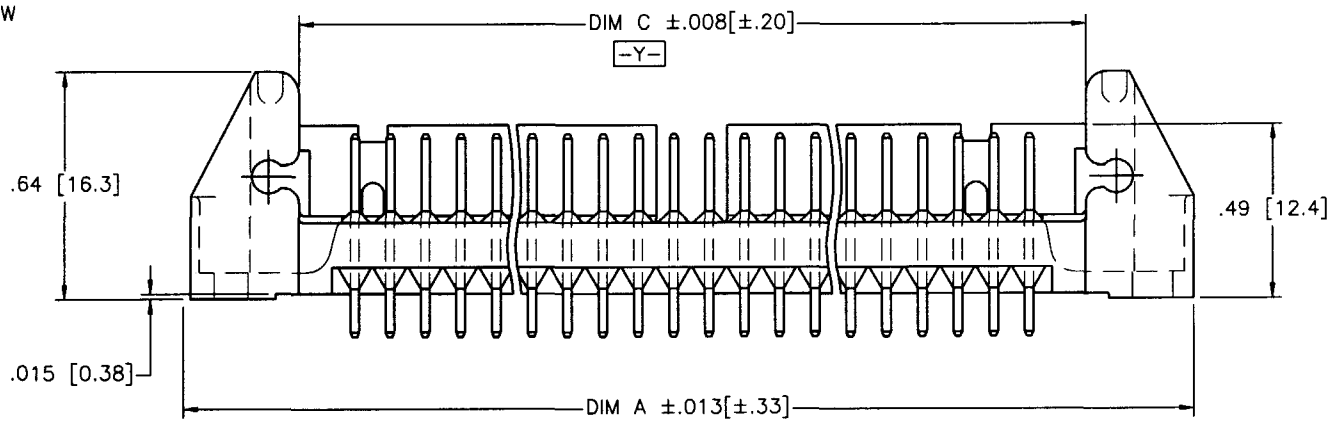
PRODUCT NUMBER  
SEE TABLE



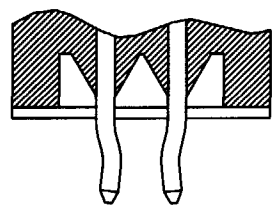
SECTION A-A  
ROTATED 90° CW



HEADER WITH LATCHES



VIEW C-C

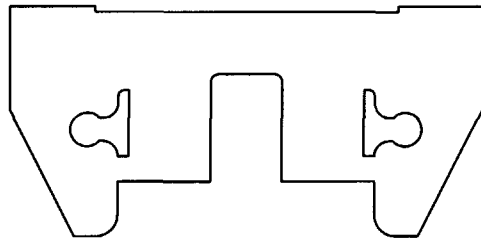


SECTION R-R

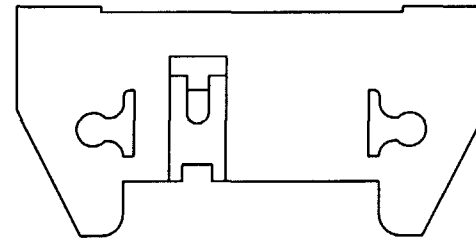
|             |                |    |      |                                       |                     |               |  |                                   |           |       |      |
|-------------|----------------|----|------|---------------------------------------|---------------------|---------------|--|-----------------------------------|-----------|-------|------|
| mat'l. code |                |    |      | tolerances unless otherwise specified |                     | CUSTOMER COPY |  | Electronics<br>www.fciconnect.com |           |       |      |
| ltr         | ecn no         | dr | date | linear                                | .XX ±.01/.3         | projection    |  | title                             |           |       |      |
| K           |                |    |      |                                       | .XXX ±.005/0.13     |               |  | QUICKIE HDR, STRAIGHT             |           | code  | 213  |
|             |                |    |      |                                       | .XXX ±.0020/0.051   |               |  | 3 WALL LATCH & EJECT              |           | sheet | 2 of |
|             |                |    |      | angles                                | 0° ±2°              | INCH/MM       |  | product family                    | QKE. HDR. |       |      |
|             |                |    |      | dr                                    | J. SHREINER 1/15/90 | scale         |  | A                                 | 66207     |       |      |
|             |                |    |      | engr                                  | M. SMYK 1/15/90     | 2:1           |  | cage code                         | 22526     |       |      |
|             |                |    |      | chr                                   | M. SMYK 1/15/90     |               |  |                                   |           |       |      |
|             |                |    |      | appd                                  | M. SMYK 1/15/90     |               |  |                                   |           |       |      |
| sheet index | revision sheet |    |      |                                       |                     |               |  |                                   |           |       |      |

ACAD

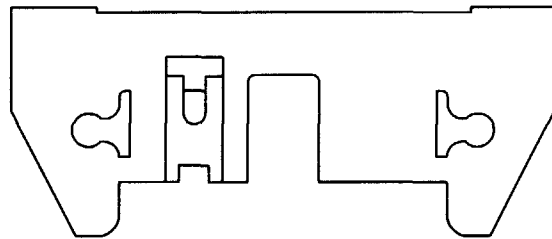
PRODUCT NUMBER  
SEE TABLE



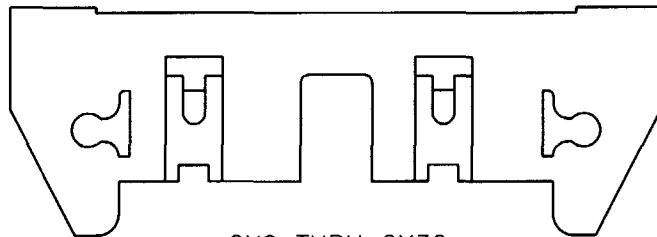
2X5  
STYLE A



2X5  
STYLE B



2X7  
STYLE C



2X8 THRU 2X30  
2X10 SHOWN  
STYLE D

NOTES:

1. MOLDING MATERIAL: GLASS FILLED POLYESTER FLAME RETARDANT PER UL- 94V-0. COLOR: BLUE
2. PIN MATERIAL: PHOS BRONZE
- ③ 1" MAX DRAFT PERMISSIBLE ON ALL SURFACES UNLESS OTHERWISE SPECIFIED.
- ④ LOGO LOCATED APPROX, AS SHOWN.
5. RECOMMENDED MOUNTING SCREW: #2-56 FILLISTER HD. MACH. SCREW 3/8 LG. FOR 1/16" AND 3/32" BOARD 7/16" LG. FOR 1/8" BOARD.
6. 4 LBS/2.3 KG MIN PIN RETENTION IN BOTH DIRECTIONS. (SEE TABLE)
7. HEADER WITH LOW PROFILE (LP) LATCHES (SEE TABLE) ARE DESIGNED TO BE USED WITH FEMALE CONNECTORS WITHOUT STRAIN RELIEF. HEADERS WITH (STD) LATCHES (SEE TABLE) ARE DESIGNED TO BE USED WITH FEMALE CONNECTORS WITH STRAIN RELIEF.
8. PLATING ON LEAD-IN PORTION OF PIN IS MANUFACTURING OPTION.
9. SPECIAL LATCH HEIGHT TO BE USED WITH CARD CONNECTOR APPLICATION.
- ⑩ RETENTIVE FEATURE AVAILABLE ON CONNECTORS WITH .105/2.67, .120/3.05, OR .150/3.81 TAIL LENGTH RETENTIVE P/N INCLUDES THE LETTER "R" AFTER THE EXISTING P/N.  
EXAMPLE: 66207-XXX FOR EXISTING P/N  
66207-XXXR FOR RETENTIVE P/N.  
RETENTIVE FEATURE LOCATION - SEE TABLE  
SEE SECTION R-R ON SH. 2.

Tous droits strictement reserves. Reproduction ou communication a des tiers interdite sans queique forme que ce soit sans autorisation ecrite du proprietaire. Propriete de c FCI. Droits de reproduction FCI.



All rights strictly reserved. Reproduction or issue to third parties in any form whatever is not permitted without written authority from the proprietor. Property of FCI. Copyright FCI.

|             |                |    |      |                                       |                     |               |   |   |  |       |  |
|-------------|----------------|----|------|---------------------------------------|---------------------|---------------|---|---|--|-------|--|
| mat'l. code |                |    |      | tolerances unless otherwise specified |                     | CUSTOMER COPY |   | Electronics<br>FCI <a href="http://www.felconnect.com">www.felconnect.com</a> |  |       |  |
| ltr         | ecn no         | dr | date | linear                                | .XX ±.01/.3         | projection    |   | title   |  |       |  |
| k           |                |    |      |                                       | .XXX ±.005/0.13     |               |   | QUICKIE HDR, STRAIGHT   |  | code  |  |
|             |                |    |      | angles                                | .XXXX ±.0020/0.051  | INCH/MM       |   | 3 WALL LATCH & EJECT  |  |       |  |
|             |                |    |      | dr                                    | 0° ±2°              |               |   | product family OKE. HDR.  |  | code  |  |
|             |                |    |      | enrg                                  | J. SHREINER 1/15/90 | scale         | A | size  |  |       |  |
|             |                |    |      | chr                                   | M. SMYK 1/15/90     |               |   | 66207   |  | sheet |  |
|             |                |    |      | appd                                  | M. SMYK 1/15/90     |               |   | 2:1   |  | 3 of  |  |
| sheet index | revision sheet |    |      |                                       |                     |               |   | cage code   |  |       |  |
|             |                |    |      |                                       |                     |               |   | 22526   |  |       |  |

ACAD


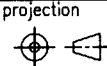
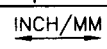
cage code  
22526

| PRODUCT NUMBER | SIZE   | DIM A       | DIM B       | DIM C       | DIM D     | DIM E       | LATCHES NOTE 7 | STYLE | PIN SHAPE | PIN PLATING                          |
|----------------|--------|-------------|-------------|-------------|-----------|-------------|----------------|-------|-----------|--------------------------------------|
| 66207-001      | 2 X 5  | 1.330/33.78 | .400/10.16  | .720/18.29  | .105/2.67 | 1.100/27.94 | NO             | A     | RND       | 30μ"/0.76μ Au OVER 50μ"/1.27μ MIN Ni |
| -002           | 2 X 7  | 1.530/38.86 | .600/15.24  | .920/23.37  |           | 1.300/33.02 |                | C     |           |                                      |
| -003           | 2 X 8  | 1.630/41.40 | .700/17.78  | 1.020/25.91 |           | 1.400/35.56 |                | D     |           |                                      |
| -004           | 2 X 10 | 1.830/46.48 | .900/22.86  | 1.220/30.99 |           | 1.600/40.64 |                |       |           |                                      |
| -005           | 2 X 13 | 2.130/54.10 | 1.200/30.48 | 1.520/38.61 |           | 1.900/48.26 |                |       |           |                                      |
| -006           | 2 X 17 | 2.530/64.26 | 1.600/40.64 | 1.920/48.77 |           | 2.300/58.42 |                |       |           |                                      |
| -007           | 2 X 20 | 2.830/71.88 | 1.900/48.26 | 2.220/56.39 |           | 2.600/66.04 |                |       |           |                                      |
| -008           | 2 X 25 | 3.330/84.58 | 2.400/60.96 | 2.720/69.09 |           | 3.100/78.74 |                |       |           |                                      |
| -009           | 2 X 30 | 3.830/97.28 | 2.900/73.66 | 3.220/81.79 |           | 3.600/91.44 | NO             | D     |           |                                      |
| -010           | 2 X 5  | 1.330/33.78 | .400/10.16  | .720/18.29  |           | 1.100/27.94 | STD            | A     |           |                                      |
| -011           | 2 X 7  | 1.530/38.86 | .600/15.24  | .920/23.37  |           | 1.300/33.02 |                | C     |           |                                      |
| -012           | 2 X 8  | 1.630/41.40 | .700/17.78  | 1.020/25.91 |           | 1.400/35.56 |                | D     |           |                                      |
| -013           | 2 X 10 | 1.830/46.48 | .900/22.86  | 1.220/30.99 |           | 1.600/40.64 |                |       |           |                                      |
| -014           | 2 X 13 | 2.130/54.10 | 1.200/30.48 | 1.520/38.61 |           | 1.900/48.26 |                |       |           |                                      |
| -015           | 2 X 17 | 2.530/64.26 | 1.600/40.64 | 1.920/48.77 |           | 2.300/58.42 |                |       |           |                                      |
| -016           | 2 X 20 | 2.830/71.88 | 1.900/48.26 | 2.220/56.39 |           | 2.600/66.04 |                |       |           |                                      |
| -017           | 2 X 25 | 3.330/84.58 | 2.400/60.96 | 2.720/69.09 |           | 3.100/78.74 |                |       |           |                                      |
| -018           | 2 X 30 | 3.830/97.28 | 2.900/73.66 | 3.220/81.79 |           | 3.600/91.44 | STD            | D     |           |                                      |
| -019           | 2 X 5  | 1.330/33.78 | .400/10.16  | .720/18.29  |           | 1.100/27.94 | LP             | A     |           |                                      |
| -020           | 2 X 7  | 1.530/38.86 | .600/15.24  | .920/23.37  |           | 1.300/33.02 |                | C     |           |                                      |
| -021           | 2 X 8  | 1.630/41.40 | .700/17.78  | 1.020/25.91 |           | 1.400/35.56 |                | D     |           |                                      |
| -022           | 2 X 10 | 1.830/46.48 | .900/22.86  | 1.220/30.99 |           | 1.600/40.64 |                |       |           |                                      |
| -023           | 2 X 13 | 2.130/54.10 | 1.200/30.48 | 1.520/38.61 |           | 1.900/48.26 |                |       |           |                                      |
| -024           | 2 X 17 | 2.530/64.26 | 1.600/40.64 | 1.920/48.77 |           | 2.300/58.42 |                |       |           |                                      |
| -025           | 2 X 20 | 2.830/71.88 | 1.900/48.26 | 2.220/56.39 |           | 2.600/66.04 |                |       |           |                                      |
| -026           | 2 X 25 | 3.330/84.58 | 2.400/60.96 | 2.720/69.09 |           | 3.100/78.74 |                |       |           |                                      |
| -027           | 2 X 30 | 3.830/97.28 | 2.900/73.66 | 3.220/81.79 |           | 3.600/91.44 | LP             | D     |           |                                      |
| -028           | 2 X 5  | 1.330/33.78 | .400/10.16  | .720/18.29  |           | 1.100/27.94 | NO             | B     |           |                                      |
| -029           | 2 X 5  | 1.330/33.78 | .400/10.16  | .720/18.29  |           | 1.100/27.94 | STD            | B     |           |                                      |
| -030           | 2 X 5  | 1.330/33.78 | .400/10.16  | .720/18.29  | .105/2.67 | 1.100/27.94 | LP             | B     |           |                                      |
| -031           | 2 X 5  | 1.330/33.78 | .400/10.16  | .720/18.29  | .150/3.81 |             | NO             | A     |           |                                      |
| -032           | 2 X 7  | 1.530/38.86 | .600/15.24  | .920/23.37  |           | 1.300/33.02 |                | C     |           |                                      |
| -033           | 2 X 8  | 1.630/41.40 | .700/17.78  | 1.020/25.91 |           | 1.400/35.56 |                | D     |           |                                      |
| -034           | 2 X 10 | 1.830/46.48 | .900/22.86  | 1.220/30.99 |           | 1.600/40.64 |                | D     |           |                                      |
| -035           | 2 X 13 | 2.130/54.10 | 1.200/30.48 | 1.520/38.61 |           | 1.900/48.26 |                | D     |           |                                      |
| 66207-036      | 2 X 17 | 2.530/64.26 | 1.600/40.64 | 1.920/48.77 | .150/3.81 | 2.300/58.42 | NO             | D     | RND       | 30μ"/0.76μ Au OVER 50μ"/1.27μ MIN Ni |

Tous droits strictement reserves. Reproduction ou communication a des tiers interdite sous quelque forme que ce soit sans autorisation ecrite du proprietaire. Property of FCI. Droits de reproduction FCI.

All rights strictly reserved. Reproduction or issue to third parties in any form whatever is not permitted without written authority from the proprietor. Property of FCI. Copyright FCI.

FCI


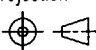
|             |                |    |      |                                       |                    |         |            |   |  |  |  |
|-------------|----------------|----|------|---------------------------------------|--------------------|---------|------------|---|--|--|--|
| mat'l. code |                |    |      | tolerances unless otherwise specified |                    |         |            | CUSTOMER COPY   |  |  <b>Electronics</b><br><a href="http://www.fciconnect.com">www.fciconnect.com</a> |  |
| ltr         | ecn no         | dr | date | linear                                | .XX ±.01/.3        |         | projection |  | title                                      |  |  |
| K           |                |    |      |                                       | .XXX ±.005/0.13    |         |            |   | QUICKIE HDR, STRAIGHT 3 WALL LATCH & EJECT |  |  |
|             |                |    |      | angles                                | .XXXX ±.0020/0.051 |         | INCH/MM    |  | product family QKE. HDR.                   |  |  |
|             |                |    |      | dr                                    | J. SHREINER        | 1/15/90 |            |   | code 213                                   |  |  |
|             |                |    |      | engr                                  | M. SMYK            | 1/15/90 | scale      | A   | size/ dwg no                               |  |  |
|             |                |    |      | chr                                   | M. SMYK            | 1/15/90 |            |   | 66207                                      |  |  |
|             |                |    |      | appd                                  | M. SMYK            | 1/15/90 | 2:1        |   | sheet 4 of                                 |  |  |
| sheet index | revision sheet |    |      |                                       |                    |         |            |   |  |  |  |

| PRODUCT NUMBER | SIZE   | DIM A       | DIM B       | DIM C       | DIM D      | DIM E       | LATCH NOTE 7 | STYLE | PIN SHAPE | PIN PLATING                          |
|----------------|--------|-------------|-------------|-------------|------------|-------------|--------------|-------|-----------|--------------------------------------|
| 66207-037      | 2 X 20 | 2.830/71.88 | 1.900/48.26 | 2.220/56.39 | .150/3.81  | 2.600/76.04 | NO           | D     | RND       | 30μ"/0.76μ Au OVER 50μ"/1.27μ MIN Ni |
| -038           | 2 X 25 | 3.330/84.58 | 2.400/60.96 | 2.720/69.09 |            | 3.100/78.74 | NO           | D     |           |                                      |
| -039           | 2 X 30 | 3.830/97.28 | 2.900/73.66 | 3.220/81.79 |            | 3.600/91.44 | NO           | D     |           |                                      |
| -040           | 2 X 5  | 1.330/33.78 | .400/10.16  | .720/18.29  |            | 1.100/27.94 | STD          | A     |           |                                      |
| -041           | 2 X 7  | 1.530/38.86 | .600/15.24  | .920/23.37  |            | 1.300/33.02 |              | C     |           |                                      |
| -042           | 2 X 8  | 1.630/41.40 | .700/17.78  | 1.020/25.91 |            | 1.400/35.56 |              | D     |           |                                      |
| -043           | 2 X 10 | 1.830/46.48 | .900/22.86  | 1.220/30.99 |            | 1.600/40.64 |              |       |           |                                      |
| -044           | 2 X 13 | 2.130/54.10 | 1.200/30.48 | 1.520/38.61 |            | 1.900/48.26 |              |       |           |                                      |
| -045           | 2 X 17 | 2.530/64.26 | 1.600/40.64 | 1.920/48.77 |            | 2.300/58.42 |              |       |           |                                      |
| -046           | 2 X 20 | 2.830/71.88 | 1.900/48.26 | 2.220/56.39 |            | 2.600/76.04 |              |       |           |                                      |
| -047           | 2 X 25 | 3.330/84.58 | 2.400/60.96 | 2.720/69.09 |            | 3.100/78.74 |              |       |           |                                      |
| -048           | 2 X 30 | 3.830/97.28 | 2.900/73.66 | 3.220/81.79 |            | 3.600/91.44 | STD          | D     |           |                                      |
| -049           | 2 X 5  | 1.330/33.78 | .400/10.16  | .720/18.29  |            | 1.100/27.94 | LP           | A     |           |                                      |
| -050           | 2 X 7  | 1.530/38.86 | .600/15.24  | .920/23.37  |            | 1.300/33.02 |              | C     |           |                                      |
| -051           | 2 X 8  | 1.630/41.40 | .700/17.78  | 1.020/25.91 |            | 1.400/35.56 |              | D     |           |                                      |
| -052           | 2 X 10 | 1.830/46.48 | .900/22.86  | 1.220/30.99 |            | 1.600/40.64 |              |       |           |                                      |
| -053           | 2 X 13 | 2.130/54.10 | 1.200/30.48 | 1.520/38.61 |            | 1.900/48.26 |              |       |           |                                      |
| -054           | 2 X 17 | 2.530/64.26 | 1.600/40.64 | 1.920/48.77 |            | 2.300/58.42 |              |       |           |                                      |
| -055           | 2 X 20 | 2.830/71.88 | 1.900/48.26 | 2.220/56.39 |            | 2.600/76.04 |              |       |           |                                      |
| -056           | 2 X 25 | 3.330/84.58 | 2.400/60.96 | 2.720/69.09 |            | 3.100/78.74 |              |       |           |                                      |
| -057           | 2 X 30 | 3.830/97.28 | 2.900/73.66 | 3.220/81.79 |            | 3.600/91.44 | LP           | D     |           |                                      |
| -058           | 2 X 5  | 1.330/33.78 | .400/10.16  | .720/18.29  |            | 1.100/27.94 | NO           | B     |           |                                      |
| -059           | 2 X 5  | 1.330/33.78 | .400/10.16  | .720/18.29  |            | 1.100/27.94 | STD          | B     |           |                                      |
| -060           | 2 X 5  | 1.330/33.78 | .400/10.16  | .720/18.29  | .150/3.81  | 1.100/27.94 | LP           | B     | RND       |                                      |
| -061           | 2 X 5  | 1.330/33.78 | .400/10.16  | .720/18.29  | .675/17.15 | 1.100/27.94 | NO           | A     | SQ        |                                      |
| -062           | 2 X 7  | 1.530/38.86 | .600/15.24  | .920/23.37  |            | 1.300/33.02 |              | C     |           |                                      |
| -063           | 2 X 8  | 1.630/41.40 | .700/17.78  | 1.020/25.91 |            | 1.400/35.56 |              | D     |           |                                      |
| -064           | 2 X 10 | 1.830/46.48 | .900/22.86  | 1.220/30.99 |            | 1.600/40.64 |              |       |           |                                      |
| -065           | 2 X 13 | 2.130/54.10 | 1.200/30.48 | 1.520/38.61 |            | 1.900/48.26 |              |       |           |                                      |
| -066           | 2 X 17 | 2.530/64.26 | 1.600/40.64 | 1.920/48.77 |            | 2.300/58.42 |              |       |           |                                      |
| -067           | 2 X 20 | 2.830/71.88 | 1.900/48.26 | 2.220/56.39 |            | 2.600/76.04 |              |       |           |                                      |
| -068           | 2 X 25 | 3.330/84.58 | 2.400/60.96 | 2.720/69.09 |            | 3.100/78.74 |              |       |           |                                      |
| -069           | 2 X 30 | 3.830/97.28 | 2.900/73.66 | 3.220/81.79 |            | 3.600/91.44 | NO           | D     |           |                                      |
| -070           | 2 X 5  | 1.330/33.78 | .400/10.16  | .720/18.29  |            | 1.100/27.94 | STD          | A     |           |                                      |
| -071           | 2 X 7  | 1.530/38.86 | .600/15.24  | .920/23.37  |            | 1.300/33.02 | STD          | C     |           |                                      |
| 66207-072      | 2 X 8  | 1.630/41.40 | .700/17.78  | 1.020/25.91 | .675/17.15 | 1.400/35.56 | STD          | D     | SQ        | 30μ"/0.76μ Au OVER 50μ"/1.27μ MIN Ni |

Tous droits strictement reserves. Reproduction ou communication a des tiers interdite sous quelque forme que ce soit sans autorisation écrite du propriétaire. Propriete de c FCI. Droits de reproduction FCI.

All rights strictly reserved. Reproduction or issue to third parties in any form whatever is not permitted without written authority from the proprietor. Property of FCI. Copyright FCI.

FCI

|             |                |                                       |      |               |                     |  |   |
|-------------|----------------|---------------------------------------|------|---------------|---------------------|--|---|
| mat'l. code |                | tolerances unless otherwise specified |      | CUSTOMER COPY |                     |  <b>Electronics</b><br><a href="http://www.fciconnect.com">www.fciconnect.com</a> |   |
| ltr         | ecn no         | dr                                    | date | linear        | .XX ±.01/.3         | projection   |  |
| K           |                |                                       |      |               | .XXX ±.005/0.13     |  |   |
|             |                |                                       |      | angles        | .XXXX ±.0020/0.051  | product family<br>QKE. HDR.  | code<br>213   |
|             |                |                                       |      | dr            | 0° ±2°              |  |   |
|             |                |                                       |      | enr           | J. SHREINER 1/15/90 | sheet<br>5 of  |   |
|             |                |                                       |      | chr           | M. SMYK 1/15/90     |  | sheet<br>5 of   |
|             |                |                                       |      | appd          | M. SMYK 1/15/90     | sheet<br>5 of  |   |
| sheet index | revision sheet |                                       |      |               |                     |  |   |

| PRODUCT NUMBER | SIZE   | DIM A       | DIM B       | DIM C       | DIM D      | DIM E       | LATCH NOTE 7 | STYLE | PIN SHAPE | PIN PLATING                          |
|----------------|--------|-------------|-------------|-------------|------------|-------------|--------------|-------|-----------|--------------------------------------|
| 66207-073      | 2 X 10 | 1.830/46.48 | .900/22.86  | 1.220/30.99 | .675/17.15 | 1.600/40.64 | STD          | D     | SQ        | 30μ"/0.76μ Au OVER 50μ"/1.27μ MIN Ni |
| -074           | 2 X 13 | 2.130/54.10 | 1.200/30.48 | 1.520/38.61 |            | 1.900/48.26 |              |       |           |                                      |
| -075           | 2 X 17 | 2.530/64.26 | 1.600/40.64 | 1.920/48.77 |            | 2.300/58.42 |              |       |           |                                      |
| -076           | 2 X 20 | 2.830/71.88 | 1.900/48.26 | 2.220/56.39 |            | 2.600/76.04 |              |       |           |                                      |
| -077           | 2 X 25 | 3.330/84.58 | 2.400/60.96 | 2.720/69.09 |            | 3.100/78.74 |              |       |           |                                      |
| -078           | 2 X 30 | 3.830/97.28 | 2.900/73.66 | 3.220/81.79 |            | 3.600/91.44 | STD          | D     |           |                                      |
| -079           | 2 X 5  | 1.330/33.78 | .400/10.16  | .720/18.29  |            | 1.100/27.94 | LP           | A     |           |                                      |
| -080           | 2 X 7  | 1.530/38.86 | .600/15.24  | .920/23.37  |            | 1.300/33.02 |              | C     |           |                                      |
| -081           | 2 X 8  | 1.630/41.40 | .700/17.78  | 1.020/25.91 |            | 1.400/35.56 |              | D     |           |                                      |
| -082           | 2 X 10 | 1.830/46.48 | .900/22.86  | 1.220/30.99 |            | 1.600/40.64 |              |       |           |                                      |
| -083           | 2 X 13 | 2.130/54.10 | 1.200/30.48 | 1.520/38.61 |            | 1.900/48.26 |              |       |           |                                      |
| -084           | 2 X 17 | 2.530/64.26 | 1.600/40.64 | 1.920/48.77 |            | 2.300/58.42 |              |       |           |                                      |
| -085           | 2 X 20 | 2.830/71.88 | 1.900/48.26 | 2.220/56.39 |            | 2.600/76.04 |              |       |           |                                      |
| -086           | 2 X 25 | 3.330/84.58 | 2.400/60.96 | 2.720/69.09 |            | 3.100/78.74 |              |       |           |                                      |
| -087           | 2 X 30 | 3.830/97.28 | 2.900/73.66 | 3.220/81.79 |            | 3.600/91.44 | LP           | D     |           |                                      |
| -088           | 2 X 5  | 1.330/33.78 | .400/10.16  | .720/18.29  |            | 1.100/27.94 | NO           | B     |           |                                      |
| -089           | 2 X 5  | 1.330/33.78 | .400/10.16  | .720/18.29  |            | 1.100/27.94 | STD          | B     |           |                                      |
| -090           | 2 X 5  | 1.330/33.78 | .400/10.16  | .720/18.29  | .675/17.15 | 1.100/27.94 | LP           | B     | SQ        |                                      |
| -091           | 2 X 12 | 2.030/45.56 | 1.100/27.94 | 1.420/36.07 | .105/2.67  | 1.800/45.72 | NO           | D     | RND       |                                      |
| -092           |        |             |             |             | .105/2.67  |             | STD          |       |           |                                      |
| -093           |        |             |             |             | .105/2.67  |             | LP           |       |           |                                      |
| -094           |        |             |             |             | .150/3.81  |             | NO           |       |           |                                      |
| -095           |        |             |             |             | .150/3.81  |             | STD          |       |           |                                      |
| -096           |        |             |             |             | .150/3.81  |             | LP           |       | RND       |                                      |
| -097           |        |             |             |             | .675/17.15 |             | NO           |       | SQ        |                                      |
| -098           |        |             |             |             | .675/17.15 |             | STD          |       | SQ        |                                      |
| -099           | 2 X 12 | 2.030/45.56 | 1.100/27.94 | 1.420/36.07 | .675/17.15 | 1.800/45.72 | LP           |       | SQ        |                                      |
| -100           | 2 X 15 | 2.330/59.18 | 1.400/35.56 | 1.720/43.69 | .105/2.67  | 2.100/53.34 | NO           |       | RND       |                                      |
| -101           |        |             |             |             | .105/2.67  |             | STD          |       |           |                                      |
| -102           |        |             |             |             | .105/2.67  |             | LP           |       |           |                                      |
| -103           |        |             |             |             | .150/3.81  |             | NO           |       |           |                                      |
| -104           |        |             |             |             | .150/3.81  |             | STD          |       |           |                                      |
| -105           |        |             |             |             | .150/3.81  |             | LP           |       | RND       |                                      |
| -106           |        |             |             |             | .675/17.15 |             | NO           |       | SQ        |                                      |
| -107           |        |             |             |             | .675/17.15 |             | STD          |       | SQ        |                                      |
| 66207-108      | 2 X 15 | 2.330/59.18 | 1.400/35.56 | 1.720/43.69 | .675/17.15 | 2.100/53.34 | LP           | D     | SQ        | 30μ"/0.76μ Au OVER 50μ"/1.27μ MIN Ni |

Tous droits strictement reserves. Reproduction ou communication a des tiers interdite sous quelque forme que ce soit sans autorisation écrite du propriétaire. Propriété de c FCI. Droits de reproduction FCI.

All rights strictly reserved. Reproduction or issue to third parties in any form whatever is not permitted without written authority from the proprietor. Property of FCI. Copyright FCI.


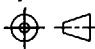


|             |                |    |      |                                       |                    |         |                      |                          |                       |                                   |         |     |
|-------------|----------------|----|------|---------------------------------------|--------------------|---------|----------------------|--------------------------|-----------------------|-----------------------------------|---------|-----|
| mat'l. code |                |    |      | tolerances unless otherwise specified |                    |         |                      | CUSTOMER COPY            |                       | Electronics<br>www.fciconnect.com |         |     |
| ltr         | ecn no         | dr | date | linear                                | .XX ±.01/.3        |         | projection           |                          | title                 |                                   | code    |     |
| k           |                |    |      |                                       | .XXX ±.005/0.13    |         |                      |                          | QUICKIE HDR, STRAIGHT |                                   |         | 213 |
|             |                |    |      |                                       | .XXXX ±.0020/0.051 |         |                      |                          | 3 WALL LATCH & EJECT  |                                   |         |     |
|             |                |    |      | angles                                | 0° ±2'             |         | INCH/MM<br>scale 2:1 | product family QKE. HDR. |                       | sheet 6 of                        |         |     |
|             |                |    |      | dr                                    | J. SHREINER        | 1/15/90 |                      | size  dwg no             |                       |                                   | A 66207 |     |
|             |                |    |      | enr                                   | M. SMYK            | 1/15/90 |                      |                          |                       |                                   |         |     |
|             |                |    |      | chr                                   | M. SMYK            | 1/15/90 |                      |                          |                       |                                   |         |     |
|             |                |    |      | appd                                  | M. SMYK            | 1/15/90 |                      |                          |                       |                                   |         |     |
| sheet index | revision sheet |    |      |                                       |                    |         |                      |                          |                       |                                   |         |     |

Tous droits strictement reserves. Reproduction ou communication a des tiers interdite sous quelque forme que ce soit sans autorisation écrite du propriétaire. Propriete de c FCI. Droits de reproduction FCI.

All rights strictly reserved. Reproduction or issue to third parties in any form whatever is not permitted without written authority from the proprietor. Property of FCI. Copyright FCI.

| PRODUCT NUMBER | SIZE   | DIM A       | DIM B       | DIM C       | DIM D      | DIM E       | LATCH  | STYLE | PIN SHAPE | PIN PLATING                          | PIN OMIT |
|----------------|--------|-------------|-------------|-------------|------------|-------------|--------|-------|-----------|--------------------------------------|----------|
| 66207-109      | 2 X 22 | 3.030/76.96 | 2.100/53.34 | 2.420/61.47 | .105/2.67  | 2.800/81.12 | NO     | D     | RND       | 30μ"/0.76μ Au OVER 50μ"/1.27μ Ni MIN |          |
| -110           |        |             |             |             | .105/2.67  |             | STD    |       |           |                                      |          |
| -111           |        |             |             |             | .105/2.67  |             | LP     |       |           |                                      |          |
| -112           |        |             |             |             | .150/3.81  |             | NO     |       |           |                                      |          |
| -113           |        |             |             |             | .150/3.81  |             | STD    |       |           |                                      |          |
| -114           |        |             |             |             | .150/3.81  |             | LP     |       | RND       |                                      |          |
| -115           |        |             |             |             | .675/17.15 |             | NO     |       | SQ        |                                      |          |
| -116           |        |             |             |             | .675/17.15 |             | STD    |       | SQ        |                                      |          |
| -117           | 2 X 22 | 3.030/76.96 | 2.100/53.34 | 2.420/61.47 | .675/17.15 | 2.800/81.12 | LP     |       | SQ        | 30μ"/0.76μ Au OVER 50μ"/1.27μ Ni MIN |          |
| -118           | 2 X 17 | 2.530/64.26 | 1.600/40.64 | 1.920/48.77 | .150/3.81  | 2.300/58.42 | LP     |       | RND       | 15μ"/0.38μ Au OVER 50μ"/1.27μ Ni MIN |          |
| -119           | 2 X 17 | 2.530/64.26 | 1.600/40.64 | 1.920/48.77 | .150/3.81  | 2.300/58.42 | NO     |       | RND       | 15μ"/0.38μ Au OVER 50μ"/1.27μ Ni MIN |          |
| -120           | 2 X 10 | 1.830/46.48 | .900/22.86  | 1.220/30.99 | .105/2.67  | 1.600/40.64 | NOTE 9 |       | SQ        | 30μ"/0.76μ Au OVER 50μ"/1.27μ Ni MIN |          |
| -121           | 2 X 10 | 1.830/46.48 | .900/22.86  | 1.220/30.99 | .150/3.81  | 1.600/40.64 | NOTE 9 | D     | RND       |                                      |          |
| -122           | 2 X 5  | 1.330/33.78 | .400/10.16  | .720/18.29  | .105/2.67  | 1.100/27.94 | NOTE 9 | B     | SQ        |                                      |          |
| -123           | 2 X 5  | 1.330/33.78 | .400/10.16  | .720/18.29  |            | 1.100/27.94 | NO     | B     |           |                                      |          |
| -124           | 2 X 10 | 1.830/46.48 | .900/22.86  | 1.220/30.99 |            | 1.600/40.64 | NO     | D     |           |                                      |          |
| -125           | 2 X 25 | 3.330/84.58 | 2.400/60.96 | 2.720/69.09 |            | 3.100/78.74 | NOTE 9 | D     |           |                                      |          |
| -126           | 2 X 25 | 3.330/84.58 | 2.400/60.96 | 2.720/69.09 |            | 3.100/78.74 | NO     | D     |           |                                      |          |
| -127           | 2 X 5  | 1.330/33.78 | .400/10.16  | .720/18.29  |            | 1.100/27.94 | NO     | A     |           |                                      |          |
| -128           | 2 X 5  | 1.330/33.78 | .400/10.16  | .720/18.29  |            | 1.100/27.94 | NOTE 9 | A     |           |                                      |          |
| -129           | 2 X 7  | 1.530/38.86 | .600/15.24  | .920/23.37  |            | 1.300/33.02 | NO     | C     |           |                                      |          |
| -130           | 2 X 7  | 1.530/38.86 | .600/15.24  | .920/23.37  |            | 1.300/33.02 | NOTE 9 | C     |           |                                      |          |
| -131           | 2 X 8  | 1.630/41.40 | .700/17.78  | 1.020/25.91 |            | 1.400/35.56 | NO     | D     |           |                                      |          |
| -132           | 2 X 8  | 1.630/41.40 | .700/17.78  | 1.020/25.91 |            | 1.400/35.56 | NOTE 9 |       |           |                                      |          |
| -133           | 2 X 13 | 2.130/54.10 | 1.200/30.48 | 1.520/38.61 |            | 1.900/48.26 | NO     |       |           |                                      |          |
| -134           | 2 X 13 | 2.130/54.10 | 1.200/30.48 | 1.520/38.61 |            | 1.900/48.26 | NOTE 9 |       |           |                                      |          |
| -135           | 2 X 17 | 2.530/64.26 | 1.600/40.64 | 1.920/48.77 |            | 2.300/58.42 | NO     |       |           |                                      |          |
| -136           | 2 X 17 | 2.530/64.26 | 1.600/40.64 | 1.920/48.77 |            | 2.300/58.42 | NOTE 9 |       |           |                                      |          |
| -137           | 2 X 20 | 2.830/71.88 | 1.900/48.26 | 2.220/56.39 |            | 2.600/66.04 | NO     |       |           |                                      |          |
| -138           | 2 X 20 | 2.830/71.88 | 1.900/48.26 | 2.220/56.39 |            | 2.600/66.04 | NOTE 9 |       |           |                                      |          |
| -139           | 2 X 30 | 3.830/97.28 | 2.900/73.66 | 3.220/81.79 |            | 3.600/91.44 | NO     |       |           |                                      |          |
| -140           | 2 X 30 | 3.830/97.28 | 2.900/73.66 | 3.220/81.79 |            | 3.600/91.44 | NOTE 9 | D     | SQ        | 30μ"/0.76μ Au OVER 50μ"/1.27μ Ni MIN |          |
| -141           | 2 X 5  | 1.330/33.78 | .400/10.16  | .720/18.29  | .105/2.67  | 1.100/27.94 | LP     | A     | RND       | 15μ"/0.38μ Au OVER 50μ"/1.27μ Ni MIN | 10       |
| -142           | 2 X 5  | 1.330/33.78 | .400/10.16  | .720/18.29  | .120/27.94 | 1.100/27.94 | LP     | A     | RND       | 15μ"/0.38μ Au OVER 50μ"/1.27μ Ni MIN | 10       |
| -143           | 2 X 5  | 1.330/33.78 | .400/10.16  | .720/18.29  | .105/2.67  | 1.100/27.94 | NO     | A     | RND       | 15μ"/0.38μ Au OVER 50μ"/1.27μ Ni MIN | 10       |
| 66207-144      | 2 X 5  | 1.330/33.78 | .400/10.16  | .720/18.29  | .120/27.94 | 1.100/27.94 | NO     | A     | RND       | 15μ"/0.38μ Au OVER 50μ"/1.27μ Ni MIN | 10       |

|             |                |    |      |                                       |                    |         |             |  |                       |  |      |
|-------------|----------------|----|------|---------------------------------------|--------------------|---------|-------------|--|-----------------------|--|------|
| mat'l. code |                |    |      | tolerances unless otherwise specified |                    |         |             | CUSTOMER COPY  |                       |  <b>Electronics</b><br>www.fciconnect.com |      |
| ltr         | ecn no         | dr | date | linear                                | .XX ±.01/.3        |         |             | projection   | title                 |  |      |
| k           |                |    |      |                                       | .XXX ±.005/0.13    |         |             |  | QUICKIE HDR, STRAIGHT |  |      |
|             |                |    |      |                                       | .XXXX ±.0020/0.051 |         |             |  | 3 WALL LATCH & EJECT  |  |      |
|             |                |    |      | angles                                | 0° ±2°             |         |             | <br>INCH/MM<br>scale<br>2:1 | product family        |  | code |
|             |                |    |      | dr                                    | J. SHREINER        | 1/15/90 | QKE. HDR.   |  | 213                   |  |      |
|             |                |    |      | enr                                   | M. SMYK            | 1/15/90 | size dwg no |  | sheet                 |  |      |
|             |                |    |      | chr                                   | M. SMYK            | 1/15/90 | A           |  | 7 of                  |  |      |
|             |                |    |      | appd                                  | M. SMYK            | 1/15/90 | 66207       |  |                       |  |      |
| sheet index | revision sheet |    |      |                                       |                    |         |             |  |                       |  |      |

cage code  
22526

ACAD

All rights strictly reserved. Reproduction or issue to third parties in any form whatever is not permitted without written authority from the proprietor. Property of FCI. Copyright FCI.



Tous droits strictement reserves. Reproduction ou communication a des tiers interdite sous quelque forme que ce soit sans autorisation écrite du propriétaire. Propriete de c FCI. Droits de reproduction FCI.

| PRODUCT NUMBER | SIZE   | DIM A       | DIM B       | DIM C       | DIM D      | DIM E       | LATCH  | STYLE | PIN SHAPE | PIN PLATING                          | PIN OMIT |
|----------------|--------|-------------|-------------|-------------|------------|-------------|--------|-------|-----------|--------------------------------------|----------|
| 66207-145      | 2 X 5  | 1.330/33.78 | .400/10.16  | .720/18.29  | .120/27.94 | 1.100/27.94 | NOTE 9 | A     | RND       | 15μ"/0.38μ Au OVER 50μ"/1.27μ Ni MIN | 10       |
| 66207-146      | 2 X 30 | 3.830/97.28 | 2.900/73.66 | 3.220/81.79 | .150/3.81  | 3.600/91.44 | NOTE 9 | D     | RND       | 30μ"/0.76μ Au OVER 50μ"/1.27μ Ni MIN | -        |

|             |                |    |      |                                       |                      |               |  |                |
|-------------|----------------|----|------|---------------------------------------|----------------------|---------------|--|----------------|
| mat'l. code |                |    |      | tolerances unless otherwise specified |                      | CUSTOMER COPY | <b>FCI</b> Electronics<br><a href="http://www.fciconnect.com">www.fciconnect.com</a> |                |
| ltr         | ecn no         | dr | date | linear                                | .XX ±.01/.3          |               |  | projection     |
| k           |                |    |      |                                       | .XXX ±.005/0.13      |               | <b>QUICKIE HDR, STRAIGHT<br/>3 WALL LATCH &amp; EJECT</b>                            |                |
|             |                |    |      | angles                                | .XXXX ±.0020/0.051   |               |  | product family |
|             |                |    |      | dr                                    | 0° ±2°               | INCH/MM       | QKE. HDR.  |                |
|             |                |    |      | engr                                  | E KROPIEWICKI 5/6/99 | scale         | code   |                |
|             |                |    |      | chr                                   | L. GREEN 5/6/99      |               | A  | 213            |
|             |                |    |      | appd                                  | L. GREEN 5/6/99      |               | 66207  | sheet          |
| sheet index | revision sheet |    |      |                                       |                      | 2:1           | 8 of   |                |

cage code  
22526

ACAD