

ASH-515 Series Pitch 5mm

Housing

BODY MATERIAL: THERMOPLASTIC (UL 94V-0), GREEN
 CLAMP: NICKEL PLATED PHOSPHOR BRONZE
 WIRE CAGE: NICKEL PLATED BRASS
 WIRE RANGE AWG: 12-16 STR.
 SCREWS: ZINC PLATED STEEL
 AVAILABLE IN MULTI POLES FROM 2 THRU 24
 RATING: 10 AMPERES, 300 VAC
 INSULATION WITHSTANDS VOLTAGE AC2000
 INSULATION RESISTANCE 500MΩ OR MORE AT DC500V

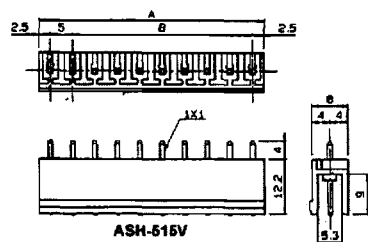
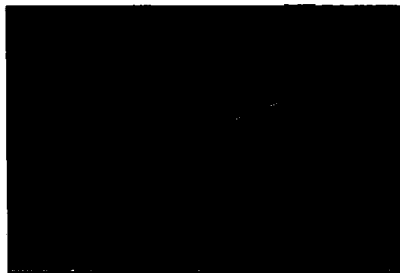
Material

BODY MATERIAL: THERMOPLASTIC (UL 94V-0), GREEN
 TERMINALS PIN: TIN PLATED BRASS
 AVAILABLE IN MULTI POLES FROM 2 THRU 24.
 CHOICE OF RIGHT ANGLE OR VERTICAL

Features

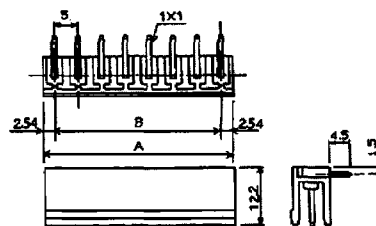
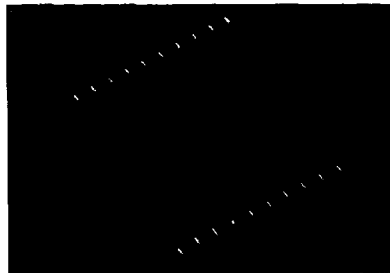
- * DISCONNECTABLE TWO-PIECE CONSTRUCTION SIMPLIFIES FIELD MAINTENANCE.
- * CHOICE OF PARALLEL OR PERPENDICULAR WIRING.
- * SHROUDED PIN HEADER PROTECTS PINS FROM PHYSICAL OR CHEMICAL DAMAGE.

ASH-515H



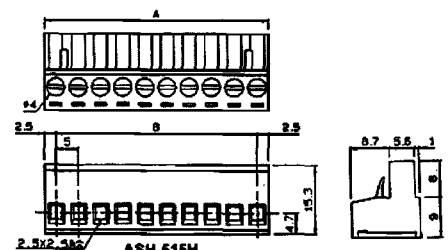
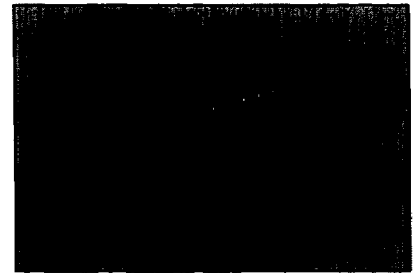
ASH-515H

ASH-515V



ASH-515V

ASH-515R



ASH-515R

PITCH: 5mm
 DIMENSION: ±0.2mm

POLE	2	3	4	5	6	7	8	9	10
A	10.0	15.0	20.0	25.0	30.0	35.0	40.0	45.0	50.0
B	5.0	10.0	15.0	20.0	25.0	30.0	35.0	40.0	45.0

POLE	11	12	13	14	15	16	17	18	19	20
A	55.0	60.0	65.0	70.0	75.0	80.0	85.0	90.0	95.0	100.0
B	50.0	55.0	60.0	65.0	70.0	75.0	80.0	85.0	90.0	95.0