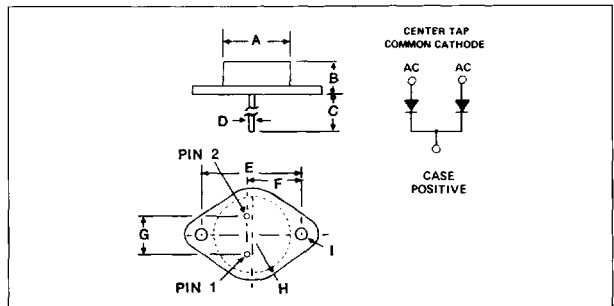


30 Amp Center-Tapped HV Schottky Rectifier

50 Volt, 60 Volt, 80 Volt & 100 Volt V_{RRM}
 0.82 Volts V_F at $I_F = 15$ Amps
 Low Leakage at High Temperature
 15 Amp Per Leg Center - Tapped TO-3

LTR.	INCHES	MILLIMETERS
A	.72 Dia.	18,29
B	.323-.342	8,20-8,69
C	.40 Min.	10,16
D	.038-.043 Dia.	.97-1,09
E	1.180-1.194	29,97-30,33
F	.665-.675	16,89-17,15
G	.426-.440	10,82-11,18
H	.525 R Max	13,34
I	.151-.161 Dia.	3,84-4,09



MAXIMUM RATINGS per diode (At $T_C = 25^\circ\text{C}$ unless otherwise noted)

RATINGS	SYMBOL	VSK30100T	VSK3080T	VSK3060T	VSK3050T	UNITS
DC Blocking Voltage	V_R					
Working Peak Reverse Voltage	V_{RRM}	100	80	60	50	Volts
Peak Repetitive Reverse Voltage	V_{RRM}					
RMS Reverse Voltage	V_{RRMS}	71	56	42	35	Volts
Average Rectified Forward Current $T_C = 100^\circ\text{C}$ (Total Pkg.) (See Fig. 3)	I_O	30.0				Amps
Peak Surge Current (non-rep) $\frac{1}{2}$ cycle, 60 Hz	I_{FSM}	300				Amps
Operating and Storage Junction Temperature Range	T_J, T_{STG}	- 65 to + 150				$^\circ\text{C}$
Thermal Resistance, Junction-to-case (Total Pkg.)	R_{JC}	1.5				$^\circ\text{C}/\text{W}$

ELECTRICAL CHARACTERISTICS per diode (At $T_C = 25^\circ\text{C}$ unless otherwise noted)

CHARACTERISTICS	SYMBOL	VSK30100T	VSK3080T	VSK3060T	VSK3050T	UNITS
Maximum Instantaneous Forward Voltage (See Fig. 1 for typ. V_F) $I_F = 8.0$ Amps $I_F = 15.0$ Amps $I_F = 45.0$ Amps	V_F	$T_J = 25^\circ\text{C}$	$T_J = 100^\circ\text{C}$	$T_J = 150^\circ\text{C}$		Volts
		0.75	0.65	0.575		
		0.82	0.75	0.625		
		1.04	0.95	0.875		
Maximum Instantaneous Reverse Current at VR (See Figure 2) $T_C = 25^\circ\text{C}$ $T_C = 100^\circ\text{C}$ $T_C = 150^\circ\text{C}$	I_R		5.0			mA
			10.0			
			25.0			
Typical Junction Capacitance $V_R = 10\text{V}$ (See Figure 4)	C_J		350			pF

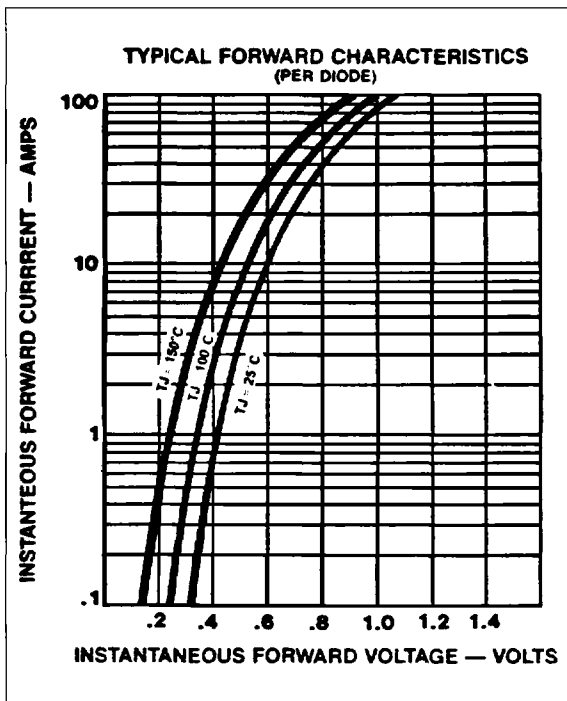


FIGURE 1

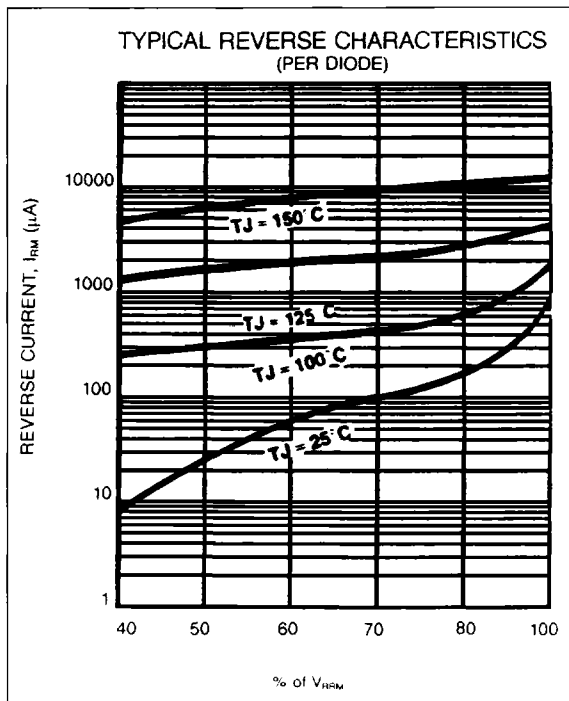


FIGURE 2

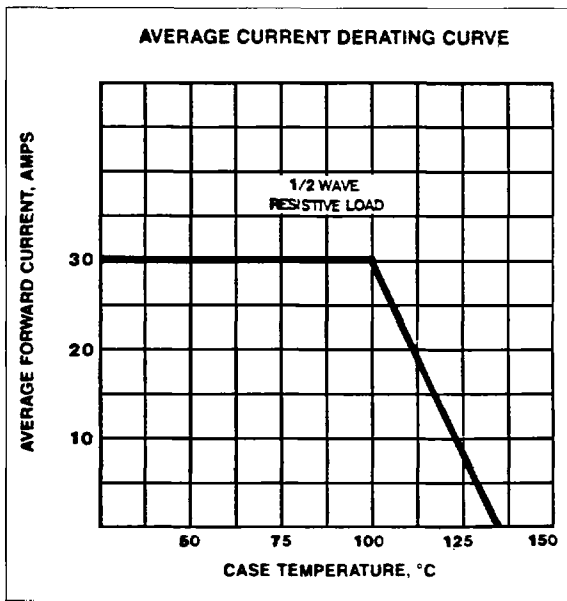


FIGURE 3

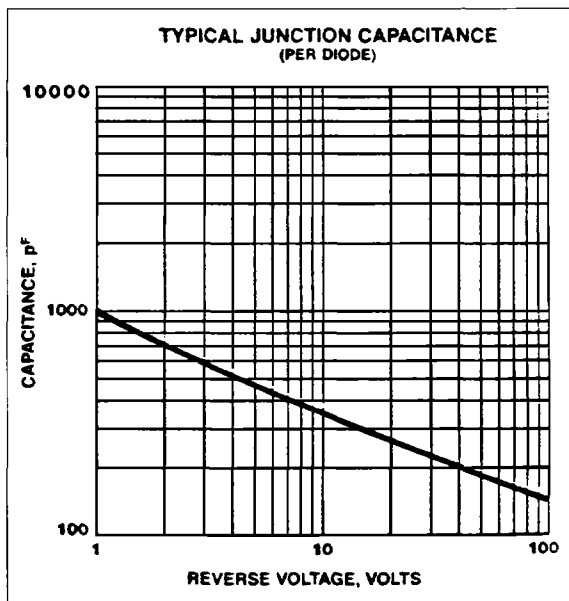


FIGURE 4