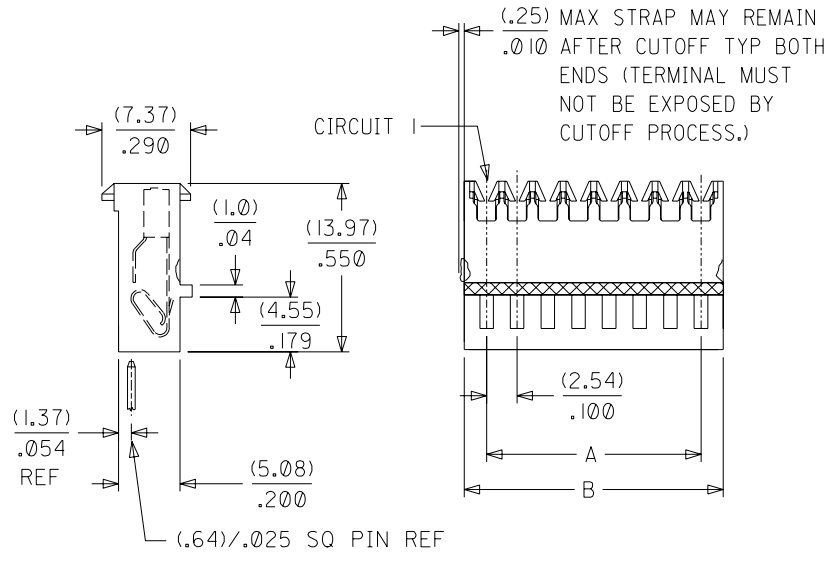
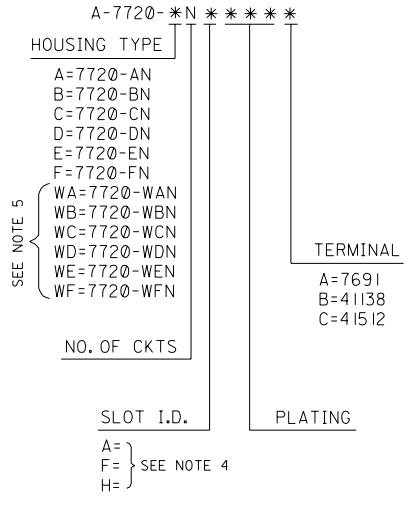


NO OF CKTS	DIM A	DIM B	DIM C
2	(2.54) .100	(5.44) .214	(7.59) .299
3	(5.08) .200	(7.98) .314	(10.13) .399
4	(7.62) .300	(10.52) .414	(12.67) .499
5	(10.16) .400	(13.06) .514	(15.21) .599
6	(12.70) .500	(15.60) .614	(17.75) .699
7	(15.24) .600	(18.14) .714	(20.29) .799
8	(17.78) .700	(20.68) .814	(22.23) .899
9	(20.30) .800	(23.22) .914	(25.37) .999
10	(22.86) .900	(25.76) 1.014	(27.91) 1.099
11	(25.40) 1.000	(28.30) 1.114	(30.45) 1.199
12	(27.94) 1.100	(30.84) 1.214	(32.99) 1.299
13	(30.48) 1.200	(33.38) 1.314	(35.53) 1.399
14	(33.02) 1.300	(35.92) 1.414	(38.07) 1.499
15	(35.56) 1.400	(38.46) 1.514	(40.61) 1.599
16	(38.10) 1.500	(41.00) 1.614	(43.15) 1.699
17	(40.64) 1.600	(43.54) 1.714	(45.69) 1.799
18	(43.18) 1.700	(46.08) 1.814	(48.23) 1.899
19	(45.72) 1.800	(48.62) 1.914	(50.77) 1.999
20	(48.26) 1.900	(51.16) 2.014	(53.31) 2.099
21	(50.80) 2.000	(53.70) 2.114	(55.85) 2.199
22	(53.34) 2.100	(56.24) 2.214	(58.39) 2.299
23	(55.88) 2.200	(58.78) 2.314	(60.93) 2.399
24	(58.42) 2.300	(61.32) 2.414	(63.47) 2.499
25	(60.96) 2.400	(63.86) 2.514	(66.01) 2.599
26	(63.50) 2.500	(66.40) 2.614	(68.55) 2.699
27	(66.04) 2.600	(68.94) 2.714	(71.09) 2.799
28	(68.58) 2.700	(71.48) 2.814	(73.63) 2.899

ENGINEERING NUMBERING SYSTEM FOR PARTS WITHOUT VOIDS
SEE SHEET 17 FOR PARTS WITH VOIDS



NOTES

1. COLORED STRIPE TO RUN LENGTH OF RIB AS SHOWN (SEE CHART FOR COLOR)
2. PRODUCT SPECIFICATION: PS-7720-001
3. SEE APPLICATION SPEC SMES-7720-0002 FOR ADDITIONAL INFORMATION.
4. WIRE SPECIFICATIONS: SEE SMES-7720-0002 (INSUL. DIA .060 MAX)
SLOT SIZE A FOR USE WITH:
26 AWG SOLID, STRANDED TINNED
28 AWG SOLID, STRANDED TINNED, AND STRANDED TOPCOAT
SLOT SIZE H FOR USE WITH:
24 AWG SOLID, STRANDED TINNED, AND STRANDED TOPCOAT
26 AWG STRANDED TOPCOAT
SLOT SIZE F FOR USE WITH:
22 AWG STRANDED TINNED
5. THESE HOUSING ARE FOR USE WITH SINGLE 22 AWG WIRE TERMINATION ONLY
6. PACKAGING: BULK PK-7720-001 SEE CHART
7. FINISH: SEE SDES-88
(102) OVERALL TIN: .00508 MICROMETERS MIN OVER .00254 MICROMETERS MIN COPPER.
(208) SELECT GOLD: .00038 MICROMETERS MIN, *SELECT TIN: .00254 MICROMETERS MIN, OVERALL NICKEL UNDERPLATE: .00127 MICROMETERS MIN.
(228) SELECT GOLD: .00076 MICROMETERS MIN, *SELECT IN: .00254 MICROMETERS MIN, OVERALL NICKEL UNDERPLATE: .00127 MICROMETERS MIN.
*THE PRIMARY SHIPPING CARTON WILL BE LABELED "COMPLIANT TO RoHS DIRECTIVE 2002/95/EC AND ELV ANNEX II OF DIRECTIVE 2000/53/EC".
CARTONS WITHOUT THIS LABEL MAY CONTAIN PRODUCT WITH TIN/LEAD PLATINGS.

3-*	AZI
2	AZ
1	AZI
SHT	REV
REVISE ON CAD ONLY	

ADD E19HP09B-51 EC NO. UCP2004-1987 DRWN: SAMIEC 4 /13/04 CHK: SAMIEC 4 /13/04 APPR: MARGULIS 4 /13/04	DESCRIPTION MAJOR CRITICAL C=0	QUALITY SYMBOLS	GENERAL TOLERANCES: (UNLESS SPECIFIED)		SCALE :	DESIGN UNITS <input type="checkbox"/> mm <input checked="" type="checkbox"/> INCH	THIRD ANGLE PROJECTION	DIMENSIONS: <input type="checkbox"/> mm <input type="checkbox"/> INCH <input type="checkbox"/> mm ONLY		SHEET NO.
		4 PLACES ±0. ±.	mm INCH	DRAWN BY & DATE SAMIEC 4 /13/04	TITLE: KK 100 IDT CONNECTOR ASSEMBLY			SHEET NO.		
		3 PLACES ±0. ±.	mm INCH	CHECKED BY & DATE SAMIEC 4 /13/04	MOLEX INCORPORATED			SHEET NO.		
		2 PLACES ±0. ±.	mm INCH	APPROVED BY & DATE MARGULIS 4 /13/04	CAD FILENAME	MATERIAL NO. SEE CHART	DRAWING NO. SD-7720 -001	SHEET NO. 1 OF 17		
1 PLACE ±0. ±.	mm INCH	ANGULAR: ± 1/2 °	DRAFT WHERE APPLICABLE MUST REMAIN WITHIN DIMENSIONS		THIS DRAWING CONTAINS INFORMATION THAT IS PROPRIETARY TO MOLEX INCORPORATED AND SHOULD NOT BE USED WITHOUT WRITTEN PERMISSION.			SIZE A		

A-7720-ANA102		A-7720-BNA102		A-7720-CNA102		A-7720-DNA102		A-7720-ENA102		A-7720-FNA102	
HOUSING	7720-AN	HOUSING	7720-BN	HOUSING	7720-CN	HOUSING	7720-DN	HOUSING	7720-EN	HOUSING	7720-FN
TERM. NO	7691-A102	TERM. NO	7691-A102	TERM. NO	7691-A102	TERM. NO	7691-A102	TERM. NO	7691-A102	TERM. NO	7691-A102
PLATING:	102	PLATING:	102	PLATING:	102	PLATING:	102	PLATING:	102	PLATING:	102
COLOR	BROWN	COLOR	BROWN	COLOR	BROWN	COLOR	BROWN	COLOR	BROWN	COLOR	BROWN
MATL NO	ENG NO:	MATL NO	ENG NO:	MATL NO	ENG NO:	MATL NO	ENG NO:	MATL NO	ENG NO:	MATL NO	ENG NO:
22-26-7021	A-7720-A02A102A	22-26-8021	A-7720-B02A102A	22-26-9021	A-7720-C02A102A	22-41-3021	A-7720-D02A102A	22-41-4021	A-7720-E02A102A	22-41-5021	A-7720-F02A102A
22-26-7031	A-7720-A03A102A	22-26-8031	A-7720-B03A102A	22-26-9031	A-7720-C03A102A	22-41-3031	A-7720-D03A102A	22-41-4031	A-7720-E03A102A	22-41-5031	A-7720-F03A102A
22-26-7041	A-7720-A04A102A	22-26-8041	A-7720-B04A102A	22-26-9041	A-7720-C04A102A	22-41-3041	A-7720-D04A102A	22-41-4041	A-7720-E04A102A	22-41-5041	A-7720-F04A102A
22-26-7051	A-7720-A05A102A	22-26-8051	A-7720-B05A102A	22-26-9051	A-7720-C05A102A	22-41-3051	A-7720-D05A102A	22-41-4051	A-7720-E05A102A	22-41-5051	A-7720-F05A102A
22-26-7061	A-7720-A06A102A	22-26-8061	A-7720-B06A102A	22-26-9061	A-7720-C06A102A	22-41-3061	A-7720-D06A102A	22-41-4061	A-7720-E06A102A	22-41-5061	A-7720-F06A102A
22-26-7071	A-7720-A07A102A	22-26-8071	A-7720-B07A102A	22-26-9071	A-7720-C07A102A	22-41-3071	A-7720-D07A102A	22-41-4071	A-7720-E07A102A	22-41-5071	A-7720-F07A102A
22-26-7081	A-7720-A08A102A	22-26-8081	A-7720-B08A102A	22-26-9081	A-7720-C08A102A	22-41-3081	A-7720-D08A102A	22-41-4081	A-7720-E08A102A	22-41-5081	A-7720-F08A102A
22-26-7091	A-7720-A09A102A	22-26-8091	A-7720-B09A102A	22-26-9091	A-7720-C09A102A	22-41-3091	A-7720-D09A102A	22-41-4091	A-7720-E09A102A	22-41-5091	A-7720-F09A102A
22-26-7101	A-7720-A10A102A	22-26-8101	A-7720-B10A102A	22-26-9101	A-7720-C10A102A	22-41-3101	A-7720-D10A102A	22-41-4101	A-7720-E10A102A	22-41-5101	A-7720-F10A102A
22-26-7111	A-7720-A11A102A	22-26-8111	A-7720-B11A102A	22-26-9111	A-7720-C11A102A	22-41-3111	A-7720-D11A102A	22-41-4111	A-7720-E11A102A	22-41-5111	A-7720-F11A102A
22-26-7121	A-7720-A12A102A	22-26-8121	A-7720-B12A102A	22-26-9121	A-7720-C12A102A	22-41-3121	A-7720-D12A102A	22-41-4121	A-7720-E12A102A	22-41-5121	A-7720-F12A102A
22-26-7131	A-7720-A13A102A	22-26-8131	A-7720-B13A102A	22-26-9131	A-7720-C13A102A	22-41-3131	A-7720-D13A102A	22-41-4131	A-7720-E13A102A	22-41-5131	A-7720-F13A102A
22-26-7141	A-7720-A14A102A	22-26-8141	A-7720-B14A102A	22-26-9141	A-7720-C14A102A	22-41-3141	A-7720-D14A102A	22-41-4141	A-7720-E14A102A	22-41-5141	A-7720-F14A102A
22-26-7151	A-7720-A15A102A	22-26-8151	A-7720-B15A102A	22-26-9151	A-7720-C15A102A	22-41-3151	A-7720-D15A102A	22-41-4151	A-7720-E15A102A	22-41-5151	A-7720-F15A102A
22-26-7161	A-7720-A16A102A	22-26-8161	A-7720-B16A102A	22-26-9161	A-7720-C16A102A	22-41-3161	A-7720-D16A102A	22-41-4161	A-7720-E16A102A	22-41-5161	A-7720-F16A102A
22-26-7171	A-7720-A17A102A	22-26-8171	A-7720-B17A102A	22-26-9171	A-7720-C17A102A	22-41-3171	A-7720-D17A102A	22-41-4171	A-7720-E17A102A	22-41-5171	A-7720-F17A102A
22-26-7181	A-7720-A18A102A	22-26-8181	A-7720-B18A102A	22-26-9181	A-7720-C18A102A	22-41-3181	A-7720-D18A102A	22-41-4181	A-7720-E18A102A	22-41-5181	A-7720-F18A102A
22-26-7191	A-7720-A19A102A	22-26-8191	A-7720-B19A102A	22-26-9191	A-7720-C19A102A	22-41-3191	A-7720-D19A102A	22-41-4191	A-7720-E19A102A	22-41-5191	A-7720-F19A102A
22-26-7201	A-7720-A20A102A	22-26-8201	A-7720-B20A102A	22-26-9201	A-7720-C20A102A	22-41-3201	A-7720-D20A102A	22-41-4201	A-7720-E20A102A	22-41-5201	A-7720-F20A102A
22-26-7211	A-7720-A21A102A	22-26-8211	A-7720-B21A102A	22-26-9211	A-7720-C21A102A	22-41-3211	A-7720-D21A102A	22-41-4211	A-7720-E21A102A	22-41-5211	A-7720-F21A102A
22-26-7221	A-7720-A22A102A	22-26-8221	A-7720-B22A102A	22-26-9221	A-7720-C22A102A	22-41-3221	A-7720-D22A102A	22-41-4221	A-7720-E22A102A	22-41-5221	A-7720-F22A102A
22-26-7231	A-7720-A23A102A	22-26-8231	A-7720-B23A102A	22-26-9231	A-7720-C23A102A	22-41-3231	A-7720-D23A102A	22-41-4231	A-7720-E23A102A	22-41-5231	A-7720-F23A102A
22-26-7241	A-7720-A24A102A	22-26-8241	A-7720-B24A102A	22-26-9241	A-7720-C24A102A	22-41-3241	A-7720-D24A102A	22-41-4241	A-7720-E24A102A	22-41-5241	A-7720-F24A102A
22-26-7251	A-7720-A25A102A	22-26-8251	A-7720-B25A102A	22-26-9251	A-7720-C25A102A	22-41-3251	A-7720-D25A102A	22-41-4251	A-7720-E25A102A	22-41-5251	A-7720-F25A102A
22-26-7261	A-7720-A26A102A	22-26-8261	A-7720-B26A102A	22-26-9261	A-7720-C26A102A	22-41-3261	A-7720-D26A102A	22-41-4261	A-7720-E26A102A	22-41-5261	A-7720-F26A102A
22-26-7271	A-7720-A27A102A	22-26-8271	A-7720-B27A102A	22-26-9271	A-7720-C27A102A	22-41-3271	A-7720-D27A102A	22-41-4271	A-7720-E27A102A	22-41-5271	A-7720-F27A102A
22-26-7281	A-7720-A28A102A	22-26-8281	A-7720-B28A102A	22-26-9281	A-7720-C28A102A	22-41-3281	A-7720-D28A102A	22-41-4281	A-7720-E28A102A	22-41-5281	A-7720-F28A102A

REVISION:	AZ1	TITLE:	SEE SHEET 1	KK 100 IDT CONNECTOR	SHEET No.	3
------------------	------------	---------------	--------------------	-----------------------------	------------------	----------

DOCUMENT NUMBER:	SD-7720-001	CREATED / REVISED BY:	CHECKED BY:	APPROVED BY:
-------------------------	--------------------	------------------------------	--------------------	---------------------

A-7720-ANHP909B		A-7720-BNHP909B		A-7720-CNHP909B		A-7720-DNHP909B		A-7720-ENHP909B		A-7720-FNHP909B	
HOUSING	7720-AN	HOUSING	7720-BN	HOUSING	7720-CN	HOUSING	7720-DN	HOUSING	7720-EN	HOUSING	7720-FN
TERM. NO	41138-HP909	TERM. NO	41138-HP909	TERM. NO	41138-HP909	TERM. NO	41138-HP909	TERM. NO	41138-HP909	TERM. NO	41138-HP909
PLATING:	P909	PLATING:	P909	PLATING:	P909	PLATING:	P909	PLATING:	P909	PLATING:	P909
COLOR	GREEN	COLOR	GREEN	COLOR	GREEN	COLOR	GREEN	COLOR	GREEN	COLOR	GREEN
MATL NO	ENG NO:	MATL NO	ENG NO:	MATL NO	ENG NO:	MATL NO	ENG NO:	MATL NO	ENG NO:	MATL NO	ENG NO:
22-26-7022	A-7720-A02HP909B	22-26-8022	A-7720-B02HP909B	22-26-9022	A-7720-C02HP909B	22-41-3022	A-7720-D02HP909B	22-41-4022	A-7720-E02HP909B	22-41-5022	A-7720-F02HP909B
22-26-7032	A-7720-A03HP909B	22-26-8032	A-7720-B03HP909B	22-26-9032	A-7720-C03HP909B	22-41-3032	A-7720-D03HP909B	22-41-4032	A-7720-E03HP909B	22-41-5032	A-7720-F03HP909B
22-26-7042	A-7720-A04HP909B	22-26-8042	A-7720-B04HP909B	22-26-9042	A-7720-C04HP909B	22-41-3042	A-7720-D04HP909B	22-41-4042	A-7720-E04HP909B	22-41-5042	A-7720-F04HP909B
22-26-7052	A-7720-A05HP909B	22-26-8052	A-7720-B05HP909B	22-26-9052	A-7720-C05HP909B	22-41-3052	A-7720-D05HP909B	22-41-4052	A-7720-E05HP909B	22-41-5052	A-7720-F05HP909B
22-26-7062	A-7720-A06HP909B	22-26-8062	A-7720-B06HP909B	22-26-9062	A-7720-C06HP909B	22-41-3062	A-7720-D06HP909B	22-41-4062	A-7720-E06HP909B	22-41-5062	A-7720-F06HP909B
22-26-7072	A-7720-A07HP909B	22-26-8072	A-7720-B07HP909B	22-26-9072	A-7720-C07HP909B	22-41-3072	A-7720-D07HP909B	22-41-4072	A-7720-E07HP909B	22-41-5072	A-7720-F07HP909B
22-26-7082	A-7720-A08HP909B	22-26-8082	A-7720-B08HP909B	22-26-9082	A-7720-C08HP909B	22-41-3082	A-7720-D08HP909B	22-41-4082	A-7720-E08HP909B	22-41-5082	A-7720-F08HP909B
22-26-7092	A-7720-A09HP909B	22-26-8092	A-7720-B09HP909B	22-26-9092	A-7720-C09HP909B	22-41-3092	A-7720-D09HP909B	22-41-4092	A-7720-E09HP909B	22-41-5092	A-7720-F09HP909B
22-26-7102	A-7720-A10HP909B	22-26-8102	A-7720-B10HP909B	22-26-9102	A-7720-C10HP909B	22-41-3102	A-7720-D10HP909B	22-41-4102	A-7720-E10HP909B	22-41-5102	A-7720-F10HP909B
22-26-7112	A-7720-A11HP909B	22-26-8112	A-7720-B11HP909B	22-26-9112	A-7720-C11HP909B	22-41-3112	A-7720-D11HP909B	22-41-4112	A-7720-E11HP909B	22-41-5112	A-7720-F11HP909B
22-26-7122	A-7720-A12HP909B	22-26-8122	A-7720-B12HP909B	22-26-9122	A-7720-C12HP909B	22-41-3122	A-7720-D12HP909B	22-41-4122	A-7720-E12HP909B	22-41-5122	A-7720-F12HP909B
22-26-7132	A-7720-A13HP909B	22-26-8132	A-7720-B13HP909B	22-26-9132	A-7720-C13HP909B	22-41-3132	A-7720-D13HP909B	22-41-4132	A-7720-E13HP909B	22-41-5132	A-7720-F13HP909B
22-26-7142	A-7720-A14HP909B	22-26-8142	A-7720-B14HP909B	22-26-9142	A-7720-C14HP909B	22-41-3142	A-7720-D14HP909B	22-41-4142	A-7720-E14HP909B	22-41-5142	A-7720-F14HP909B
22-26-7152	A-7720-A15HP909B	22-26-8152	A-7720-B15HP909B	22-26-9152	A-7720-C15HP909B	22-41-3152	A-7720-D15HP909B	22-41-4152	A-7720-E15HP909B	22-41-5152	A-7720-F15HP909B
22-26-7162	A-7720-A16HP909B	22-26-8162	A-7720-B16HP909B	22-26-9162	A-7720-C16HP909B	22-41-3162	A-7720-D16HP909B	22-41-4162	A-7720-E16HP909B	22-41-5162	A-7720-F16HP909B
22-26-7172	A-7720-A17HP909B	22-26-8172	A-7720-B17HP909B	22-26-9172	A-7720-C17HP909B	22-41-3172	A-7720-D17HP909B	22-41-4172	A-7720-E17HP909B	22-41-5172	A-7720-F17HP909B
22-26-7182	A-7720-A18HP909B	22-26-8182	A-7720-B18HP909B	22-26-9182	A-7720-C18HP909B	22-41-3182	A-7720-D18HP909B	22-41-4182	A-7720-E18HP909B	22-41-5182	A-7720-F18HP909B
22-26-7192	A-7720-A19HP909B	22-26-8192	A-7720-B19HP909B	22-26-9192	A-7720-C19HP909B	22-41-3192	A-7720-D19HP909B	22-41-4192	A-7720-E19HP909B	22-41-5192	A-7720-F19HP909B
22-26-7202	A-7720-A20HP909B	22-26-8202	A-7720-B20HP909B	22-26-9202	A-7720-C20HP909B	22-41-3202	A-7720-D20HP909B	22-41-4202	A-7720-E20HP909B	22-41-5202	A-7720-F20HP909B
22-26-7212	A-7720-A21HP909B	22-26-8212	A-7720-B21HP909B	22-26-9212	A-7720-C21HP909B	22-41-3212	A-7720-D21HP909B	22-41-4212	A-7720-E21HP909B	22-41-5212	A-7720-F21HP909B
22-26-7222	A-7720-A22HP909B	22-26-8222	A-7720-B22HP909B	22-26-9222	A-7720-C22HP909B	22-41-3222	A-7720-D22HP909B	22-41-4222	A-7720-E22HP909B	22-41-5222	A-7720-F22HP909B
22-26-7232	A-7720-A23HP909B	22-26-8232	A-7720-B23HP909B	22-26-9232	A-7720-C23HP909B	22-41-3232	A-7720-D23HP909B	22-41-4232	A-7720-E23HP909B	22-41-5232	A-7720-F23HP909B
22-26-7242	A-7720-A24HP909B	22-26-8242	A-7720-B24HP909B	22-26-9242	A-7720-C24HP909B	22-41-3242	A-7720-D24HP909B	22-41-4242	A-7720-E24HP909B	22-41-5242	A-7720-F24HP909B
22-26-7252	A-7720-A25HP909B	22-26-8252	A-7720-B25HP909B	22-26-9252	A-7720-C25HP909B	22-41-3252	A-7720-D25HP909B	22-41-4252	A-7720-E25HP909B	22-41-5252	A-7720-F25HP909B
22-26-7262	A-7720-A26HP909B	22-26-8262	A-7720-B26HP909B	22-26-9262	A-7720-C26HP909B	22-41-3262	A-7720-D26HP909B	22-41-4262	A-7720-E26HP909B	22-41-5262	A-7720-F26HP909B
22-26-7272	A-7720-A27HP909B	22-26-8272	A-7720-B27HP909B	22-26-9272	A-7720-C27HP909B	22-41-3272	A-7720-D27HP909B	22-41-4272	A-7720-E27HP909B	22-41-5272	A-7720-F27HP909B
22-26-7282	A-7720-A28HP909B	22-26-8282	A-7720-B28HP909B	22-26-9282	A-7720-C28HP909B	22-41-3282	A-7720-D28HP909B	22-41-4282	A-7720-E28HP909B	22-41-5282	A-7720-F28HP909B

--	--	--	--	--	--	--	--	--	--	--	--

REVISION:	AZ1	SEE SHEET 1	TITLE:	KK 100 IDT CONNECTOR	SHEET No.	4
------------------	------------	--------------------	---------------	-----------------------------	------------------	----------

DOCUMENT NUMBER: SD-7720-001	CREATED / REVISED BY:	CHECKED BY:	APPROVED BY:
-----------------------------------------------	------------------------------	--------------------	---------------------

A-7720-WANFP909B		A-7720-WBNFP909B		A-7720-WCNFP909B		A-7720-WDNFP909B		A-7720-WENFP909B		A-7720-WFNFP909B	
HOUSING	7720-WAN	HOUSING	7720-WBN	HOUSING	7720-WCN	HOUSING	7720WDN	HOUSING	7720-WEN	HOUSING	7720-WFN
TERM. NO	41138-FP909B	TERM. NO	41138-FP909B	TERM. NO	41138-FP909B	TERM. NO	41138-FP909B	TERM. NO	41138-FP909B	TERM. NO	41138-FP909B
PLATING:	P909	PLATING:	P909	PLATING:	P909	PLATING:	P909	PLATING:	P909	PLATING:	P909
COLOR	BLACK	COLOR	BLACK	COLOR	BLACK	COLOR	BLACK	COLOR	BLACK	COLOR	BLACK
MATL NO	ENG NO:	MATL NO	ENG NO:	MATL NO	ENG NO:	MATL NO	ENG NO:	MATL NO	ENG NO:	MATL NO	ENG NO:
22-42-6020	A-7720-WA02FP909B	22-42-6021	A-7720-WB02FP909B	22-42-6022	A-7720-WC02FP909B	22-42-6023	A-7720-WD02FP909B	22-42-6024	A-7720-WE02FP909B	22-42-6025	A-7720-WF02FP909B
22-42-6030	A-7720-WA03FP909B	22-42-6031	A-7720-WB03FP909B	22-42-6032	A-7720-WC03FP909B	22-42-6033	A-7720-WD03FP909B	22-42-6034	A-7720-WE03FP909B	22-42-6035	A-7720-WF03FP909B
22-42-6040	A-7720-WA04FP909B	22-42-6041	A-7720-WB04FP909B	22-42-6042	A-7720-WC04FP909B	22-42-6043	A-7720-WD04FP909B	22-42-6044	A-7720-WE04FP909B	22-42-6045	A-7720-WF04FP909B
22-42-6050	A-7720-WA05FP909B	22-42-6051	A-7720-WB05FP909B	22-42-6052	A-7720-WC05FP909B	22-42-6053	A-7720-WD05FP909B	22-42-6054	A-7720-WE05FP909B	22-42-6055	A-7720-WF05FP909B
22-42-6060	A-7720-WA06FP909B	22-42-6061	A-7720-WB06FP909B	22-42-6062	A-7720-WC06FP909B	22-42-6063	A-7720-WD06FP909B	22-42-6064	A-7720-WE06FP909B	22-42-6065	A-7720-WF06FP909B
22-42-6070	A-7720-WA07FP909B	22-42-6071	A-7720-WB07FP909B	22-42-6072	A-7720-WC07FP909B	22-42-6073	A-7720-WD07FP909B	22-42-6074	A-7720-WE07FP909B	22-42-6075	A-7720-WF07FP909B
22-42-6080	A-7720-WA08FP909B	22-42-6081	A-7720-WB08FP909B	22-42-6082	A-7720-WC08FP909B	22-42-6083	A-7720-WD08FP909B	22-42-6084	A-7720-WE08FP909B	22-42-6085	A-7720-WF08FP909B
22-42-6090	A-7720-WA09FP909B	22-42-6091	A-7720-WB09FP909B	22-42-6092	A-7720-WC09FP909B	22-42-6093	A-7720-WD09FP909B	22-42-6094	A-7720-WE09FP909B	22-42-6095	A-7720-WF09FP909B
22-42-6100	A-7720-WA10FP909B	22-42-6101	A-7720-WB10FP909B	22-42-6102	A-7720-WC10FP909B	22-42-6103	A-7720-WD10FP909B	22-42-6104	A-7720-WE10FP909B	22-42-6105	A-7720-WF10FP909B
22-42-6110	A-7720-WA11FP909B	22-42-6111	A-7720-WB11FP909B	22-42-6112	A-7720-WC11FP909B	22-42-6113	A-7720-WD11FP909B	22-42-6114	A-7720-WE11FP909B	22-42-6115	A-7720-WF11FP909B
22-42-6120	A-7720-WA12FP909B	22-42-6121	A-7720-WB12FP909B	22-42-6122	A-7720-WC12FP909B	22-42-6123	A-7720-WD12FP909B	22-42-6124	A-7720-WE12FP909B	22-42-6125	A-7720-WF12FP909B
22-42-6130	A-7720-WA13FP909B	22-42-6131	A-7720-WB13FP909B	22-42-6132	A-7720-WC13FP909B	22-42-6133	A-7720-WD13FP909B	22-42-6134	A-7720-WE13FP909B	22-42-6135	A-7720-WF13FP909B
22-42-6140	A-7720-WA14FP909B	22-42-6141	A-7720-WB14FP909B	22-42-6142	A-7720-WC14FP909B	22-42-6143	A-7720-WD14FP909B	22-42-6144	A-7720-WE14FP909B	22-42-6145	A-7720-WF14FP909B
22-42-6150	A-7720-WA15FP909B	22-42-6151	A-7720-WB15FP909B	22-42-6152	A-7720-WC15FP909B	22-42-6153	A-7720-WD15FP909B	22-42-6154	A-7720-WE15FP909B	22-42-6155	A-7720-WF15FP909B
22-42-6160	A-7720-WA16FP909B	22-42-6161	A-7720-WB16FP909B	22-42-6162	A-7720-WC16FP909B	22-42-6163	A-7720-WD16FP909B	22-42-6164	A-7720-WE16FP909B	22-42-6165	A-7720-WF16FP909B
22-42-6170	A-7720-WA17FP909B	22-42-6171	A-7720-WB17FP909B	22-42-6172	A-7720-WC17FP909B	22-42-6173	A-7720-WD17FP909B	22-42-6174	A-7720-WE17FP909B	22-42-6175	A-7720-WF17FP909B
22-42-6180	A-7720-WA18FP909B	22-42-6181	A-7720-WB18FP909B	22-42-6182	A-7720-WC18FP909B	22-42-6183	A-7720-WD18FP909B	22-42-6184	A-7720-WE18FP909B	22-42-6185	A-7720-WF18FP909B
22-42-6190	A-7720-WA19FP909B	22-42-6191	A-7720-WB19FP909B	22-42-6192	A-7720-WC19FP909B	22-42-6193	A-7720-WD19FP909B	22-42-6194	A-7720-WE19FP909B	22-42-6195	A-7720-WF19FP909B
22-42-6200	A-7720-WA20FP909B	22-42-6201	A-7720-WB20FP909B	22-42-6202	A-7720-WC20FP909B	22-42-6203	A-7720-WD20FP909B	22-42-6204	A-7720-WE20FP909B	22-42-6205	A-7720-WF20FP909B
22-42-6210	A-7720-WA21FP909B	22-42-6211	A-7720-WB21FP909B	22-42-6212	A-7720-WC21FP909B	22-42-6213	A-7720-WD21FP909B	22-42-6214	A-7720-WE21FP909B	22-42-6215	A-7720-WF21FP909B
22-42-6220	A-7720-WA22FP909B	22-42-6221	A-7720-WB22FP909B	22-42-6222	A-7720-WC22FP909B	22-42-6223	A-7720-WD22FP909B	22-42-6224	A-7720-WE22FP909B	22-42-6225	A-7720-WF22FP909B
22-42-6230	A-7720-WA23FP909B	22-42-6231	A-7720-WB23FP909B	22-42-6232	A-7720-WC23FP909B	22-42-6233	A-7720-WD23FP909B	22-42-6234	A-7720-WE23FP909B	22-42-6235	A-7720-WF23FP909B
22-42-6240	A-7720-WA24FP909B	22-42-6241	A-7720-WB24FP909B	22-42-6242	A-7720-WC24FP909B	22-42-6243	A-7720-WD24FP909B	22-42-6244	A-7720-WE24FP909B	22-42-6245	A-7720-WF24FP909B
22-42-6250	A-7720-WA25FP909B	22-42-6251	A-7720-WB25FP909B	22-42-6252	A-7720-WC25FP909B	22-42-6253	A-7720-WD25FP909B	22-42-6254	A-7720-WE25FP909B	22-42-6255	A-7720-WF25FP909B
22-42-6260	A-7720-WA26FP909B	22-42-6261	A-7720-WB26FP909B	22-42-6262	A-7720-WC26FP909B	22-42-6263	A-7720-WD26FP909B	22-42-6264	A-7720-WE26FP909B	22-42-6265	A-7720-WF26FP909B
22-42-6270	A-7720-WA27FP909B	22-42-6271	A-7720-WB27FP909B	22-42-6272	A-7720-WC27FP909B	22-42-6273	A-7720-WD27FP909B	22-42-6274	A-7720-WE27FP909B	22-42-6275	A-7720-WF27FP909B
22-42-6280	A-7720-WA28FP909B	22-42-6281	A-7720-WB28FP909B	22-42-6282	A-7720-WC28FP909B	22-42-6283	A-7720-WD28FP909B	22-42-6284	A-7720-WE28FP909B	22-42-6285	A-7720-WF28FP909B

REVISION:		TITLE:		SHEET No.	
AZ1		SEE SHEET 1		KK 100 IDT CONNECTOR	
				6	

DOCUMENT NUMBER:	CREATED / REVISED BY:	CHECKED BY:	APPROVED BY:
SD-7720-001			

A-7720-ANA501A		A-7720-BNA501A		A-7720-CNA501A		A-7720-DNA501A		A-7720-ENA501A		A-7720-FNA501A	
HOUSING	7720-AN	HOUSING	7720-BN	HOUSING	7720-CN	HOUSING	7720-DN	HOUSING	7720-EN	HOUSING	7720-FN
TERM. NO	7691-A501	TERM. NO	7691-A501	TERM. NO	7691-A501	TERM. NO	7691-A501	TERM. NO	7691-A501	TERM. NO	7691-A501
PLATING:	501	PLATING:	501	PLATING:	501	PLATING:	501	PLATING:	501	PLATING:	501
COLOR	BROWN	COLOR	BROWN	COLOR	BROWN	COLOR	BROWN	COLOR	BROWN	COLOR	BROWN
MATL NO	ENG NO:	MATL NO	ENG NO:	MATL NO	ENG NO:	MATL NO	ENG NO:	MATL NO	ENG NO:	MATL NO	ENG NO:
	A-7720-A02A501A	22-45-8021	A-7720-B02A501A	22-45-7021	A-7720-C02A501A		A-7720-D02A501A	22-45-7024	A-7720-E02A501A		A-7720-F02A501A
	A-7720-A03A501A	22-45-8031	A-7720-B03A501A	22-45-7031	A-7720-C03A501A		A-7720-D03A501A	22-45-7034	A-7720-E03A501A		A-7720-F03A501A
	A-7720-A04A501A	22-45-8041	A-7720-B04A501A		A-7720-C04A501A		A-7720-D04A501A	22-45-7044	A-7720-E04A501A		A-7720-F04A501A
22-45-7053	A-7720-A05A501A	22-45-8051	A-7720-B05A501A		A-7720-C05A501A		A-7720-D05A501A	22-45-7054	A-7720-E05A501A		A-7720-F05A501A
	A-7720-A06A501A	22-45-8061	A-7720-B06A501A	22-45-7061	A-7720-C06A501A		A-7720-D06A501A	22-45-7064	A-7720-E06A501A		A-7720-F06A501A
22-45-7073	A-7720-A07A501A	22-45-8071	A-7720-B07A501A		A-7720-C07A501A		A-7720-D07A501A	22-45-7074	A-7720-E07A501A		A-7720-F07A501A
22-45-7083	A-7720-A08A501A	22-45-8081	A-7720-B08A501A	22-45-7081	A-7720-C08A501A	22-45-7089	A-7720-D08A501A	22-45-7084	A-7720-E08A501A	22-45-7087	A-7720-F08A501A
	A-7720-A09A501A	22-45-8091	A-7720-B09A501A		A-7720-C09A501A		A-7720-D09A501A	22-45-7094	A-7720-E09A501A		A-7720-F09A501A
	A-7720-A10A501A	22-45-8101	A-7720-B10A501A		A-7720-C10A501A		A-7720-D10A501A	22-45-7104	A-7720-E10A501A		A-7720-F10A501A
	A-7720-A11A501A	22-45-8111	A-7720-B11A501A		A-7720-C11A501A		A-7720-D11A501A	22-45-7114	A-7720-E11A501A		A-7720-F11A501A
	A-7720-A12A501A	22-45-8121	A-7720-B12A501A		A-7720-C12A501A		A-7720-D12A501A	22-45-7124	A-7720-E12A501A		A-7720-F12A501A
	A-7720-A13A501A	22-45-8131	A-7720-B13A501A	22-45-7131	A-7720-C13A501A		A-7720-D13A501A	22-45-7134	A-7720-E13A501A		A-7720-F13A501A
22-45-7143	A-7720-A14A501A	22-45-8141	A-7720-B14A501A		A-7720-C14A501A		A-7720-D14A501A	22-45-7144	A-7720-E14A501A		A-7720-F14A501A
	A-7720-A15A501A	22-45-8151	A-7720-B15A501A		A-7720-C15A501A		A-7720-D15A501A	22-45-7154	A-7720-E15A501A		A-7720-F15A501A
	A-7720-A16A501A	22-45-8161	A-7720-B16A501A		A-7720-C16A501A		A-7720-D16A501A	22-45-7164	A-7720-E16A501A		A-7720-F16A501A
	A-7720-A17A501A	22-45-8171	A-7720-B17A501A		A-7720-C17A501A		A-7720-D17A501A	22-45-7174	A-7720-E17A501A		A-7720-F17A501A
	A-7720-A18A501A	22-45-8181	A-7720-B18A501A		A-7720-C18A501A		A-7720-D18A501A	22-45-7184	A-7720-E18A501A		A-7720-F18A501A
	A-7720-A19A501A	22-45-8191	A-7720-B19A501A		A-7720-C19A501A		A-7720-D19A501A	22-45-7194	A-7720-E19A501A		A-7720-F19A501A
	A-7720-A20A501A	22-45-8201	A-7720-B20A501A		A-7720-C20A501A		A-7720-D20A501A	22-45-7204	A-7720-E20A501A		A-7720-F20A501A
	A-7720-A21A501A	22-45-8211	A-7720-B21A501A		A-7720-C21A501A		A-7720-D21A501A	22-45-7214	A-7720-E21A501A		A-7720-F21A501A
	A-7720-A22A501A	22-45-8221	A-7720-B22A501A		A-7720-C22A501A		A-7720-D22A501A	22-45-7224	A-7720-E22A501A		A-7720-F22A501A
	A-7720-A23A501A	22-45-8231	A-7720-B23A501A		A-7720-C23A501A		A-7720-D23A501A	22-45-7234	A-7720-E23A501A		A-7720-F23A501A
	A-7720-A24A501A	22-45-8241	A-7720-B24A501A	22-45-7241	A-7720-C24A501A		A-7720-D24A501A	22-45-7244	A-7720-E24A501A		A-7720-F24A501A
	A-7720-A25A501A	22-45-8251	A-7720-B25A501A		A-7720-C25A501A		A-7720-D25A501A	22-45-7254	A-7720-E25A501A		A-7720-F25A501A
	A-7720-A26A501A	22-45-8261	A-7720-B26A501A		A-7720-C26A501A		A-7720-D26A501A	22-45-7264	A-7720-E26A501A		A-7720-F26A501A
	A-7720-A27A501A	22-45-8271	A-7720-B27A501A		A-7720-C27A501A		A-7720-D27A501A	22-45-7274	A-7720-E27A501A		A-7720-F27A501A
	A-7720-A28A501A	22-45-8281	A-7720-B28A501A		A-7720-C28A501A		A-7720-D28A501A	22-45-7284	A-7720-E28A501A		A-7720-F28A501A

REVISION:		TITLE:		SHEET No.
AZ1	SEE SHEET 1	KK 100 IDT CONNECTOR		7

DOCUMENT NUMBER:	CREATED / REVISED BY:	CHECKED BY:	APPROVED BY:
SD-7720-001			

A-7720-ANH501B		A-7720-BNH501B		A-7720-CNH501B		A-7720-DNH501B		A-7720-ENH501B		A-7720-FNH501B	
HOUSING	7720-AN	HOUSING	7720-BN	HOUSING	7720-CN	HOUSING	7720-DN	HOUSING	7720-EN	HOUSING	7720-FN
TERM. NO	41138-H501	TERM. NO	41138-H501	TERM. NO	41138-H501	TERM. NO	41138-H501	TERM. NO	41138-H501	TERM. NO	41138-H501
PLATING:	501	PLATING:	501	PLATING:	501	PLATING:	501	PLATING:	501	PLATING:	501
COLOR	GREEN	COLOR	GREEN	COLOR	GREEN	COLOR	GREEN	COLOR	GREEN	COLOR	GREEN
MATL NO	ENG NO:	MATL NO	ENG NO:	MATL NO	ENG NO:	MATL NO	ENG NO:	MATL NO	ENG NO:	MATL NO	ENG NO:
22-45-7025	A-7720-A02H501B	22-45-8022	A-7720-B02H501B		A-7720-C02H501B	22-45-8027	A-7720-D02H501B	22-45-7026	A-7720-E02H501B	22-45-7028	A-7720-F02H501B
22-45-7035	A-7720-A03H501B	22-45-8032	A-7720-B03H501B		A-7720-C03H501B	22-45-8037	A-7720-D03H501B	22-45-7036	A-7720-E03H501B	22-45-7038	A-7720-F03H501B
22-45-7045	A-7720-A04H501B	22-45-8042	A-7720-B04H501B		A-7720-C04H501B	22-45-8047	A-7720-D04H501B	22-45-7046	A-7720-E04H501B	22-45-7048	A-7720-F04H501B
22-45-7055	A-7720-A05H501B	22-45-8052	A-7720-B05H501B		A-7720-C05H501B	22-45-8057	A-7720-D05H501B	22-45-7056	A-7720-E05H501B	22-45-7058	A-7720-F05H501B
22-45-7065	A-7720-A06H501B		A-7720-B06H501B	22-45-7062	A-7720-C06H501B	22-45-8067	A-7720-D06H501B	22-45-7066	A-7720-E06H501B	22-45-7068	A-7720-F06H501B
22-45-7075	A-7720-A07H501B		A-7720-B07H501B		A-7720-C07H501B	22-45-8077	A-7720-D07H501B	22-45-7076	A-7720-E07H501B	22-45-7078	A-7720-F07H501B
22-45-7085	A-7720-A08H501B	22-45-8082	A-7720-B08H501B	22-45-7082	A-7720-C08H501B	22-45-8087	A-7720-D08H501B	22-45-7086	A-7720-E08H501B	22-45-7088	A-7720-F08H501B
22-45-7095	A-7720-A09H501B		A-7720-B09H501B		A-7720-C09H501B	22-45-8097	A-7720-D09H501B	22-45-7096	A-7720-E09H501B	22-45-7098	A-7720-F09H501B
22-45-7105	A-7720-A10H501B	22-45-8102	A-7720-B10H501B	22-45-7102	A-7720-C10H501B	22-45-8107	A-7720-D10H501B	22-45-7106	A-7720-E10H501B	22-45-7108	A-7720-F10H501B
22-45-7115	A-7720-A11H501B		A-7720-B11H501B		A-7720-C11H501B	22-45-8117	A-7720-D11H501B	22-45-7116	A-7720-E11H501B	22-45-7118	A-7720-F11H501B
22-45-7125	A-7720-A12H501B		A-7720-B12H501B		A-7720-C12H501B	22-45-8127	A-7720-D12H501B	22-45-7126	A-7720-E12H501B	22-45-7128	A-7720-F12H501B
22-45-7135	A-7720-A13H501B		A-7720-B13H501B	22-45-7132	A-7720-C13H501B	22-45-8137	A-7720-D13H501B	22-45-7136	A-7720-E13H501B	22-45-7138	A-7720-F13H501B
22-45-7145	A-7720-A14H501B		A-7720-B14H501B	22-45-7142	A-7720-C14H501B	22-45-8147	A-7720-D14H501B	22-45-7146	A-7720-E14H501B	22-45-7148	A-7720-F14H501B
22-45-7155	A-7720-A15H501B		A-7720-B15H501B		A-7720-C15H501B	22-45-8157	A-7720-D15H501B	22-45-7156	A-7720-E15H501B	22-45-7158	A-7720-F15H501B
22-45-7165	A-7720-A16H501B		A-7720-B16H501B		A-7720-C16H501B	22-45-8167	A-7720-D16H501B	22-45-7166	A-7720-E16H501B	22-45-7168	A-7720-F16H501B
22-45-7175	A-7720-A17H501B		A-7720-B17H501B		A-7720-C17H501B	22-45-8177	A-7720-D17H501B	22-45-7176	A-7720-E17H501B	22-45-7178	A-7720-F17H501B
22-45-7185	A-7720-A18H501B		A-7720-B18H501B		A-7720-C18H501B	22-45-8187	A-7720-D18H501B	22-45-7186	A-7720-E18H501B	22-45-7188	A-7720-F18H501B
22-45-7195	A-7720-A19H501B		A-7720-B19H501B		A-7720-C19H501B	22-45-8197	A-7720-D19H501B	22-45-7196	A-7720-E19H501B	22-45-7198	A-7720-F19H501B
22-45-7205	A-7720-A20H501B		A-7720-B20H501B		A-7720-C20H501B	22-45-8207	A-7720-D20H501B	22-45-7206	A-7720-E20H501B	22-45-7208	A-7720-F20H501B
22-45-7215	A-7720-A21H501B		A-7720-B21H501B		A-7720-C21H501B	22-45-8217	A-7720-D21H501B	22-45-7216	A-7720-E21H501B	22-45-7218	A-7720-F21H501B
22-45-7225	A-7720-A22H501B		A-7720-B22H501B		A-7720-C22H501B	22-45-8227	A-7720-D22H501B	22-45-7226	A-7720-E22H501B	22-45-7228	A-7720-F22H501B
22-45-7235	A-7720-A23H501B		A-7720-B23H501B		A-7720-C23H501B	22-45-8237	A-7720-D23H501B	22-45-7236	A-7720-E23H501B	22-45-7238	A-7720-F23H501B
22-45-7245	A-7720-A24H501B		A-7720-B24H501B		A-7720-C24H501B	22-45-8247	A-7720-D24H501B	22-45-7246	A-7720-E24H501B	22-45-7248	A-7720-F24H501B
22-45-7255	A-7720-A25H501B		A-7720-B25H501B		A-7720-C25H501B	22-45-8257	A-7720-D25H501B	22-45-7256	A-7720-E25H501B	22-45-7258	A-7720-F25H501B
22-45-7265	A-7720-A26H501B		A-7720-B26H501B		A-7720-C26H501B	22-45-8267	A-7720-D26H501B	22-45-7266	A-7720-E26H501B	22-45-7268	A-7720-F26H501B
22-45-7275	A-7720-A27H501B		A-7720-B27H501B		A-7720-C27H501B	22-45-8277	A-7720-D27H501B	22-45-7276	A-7720-E27H501B	22-45-7278	A-7720-F27H501B
22-45-7285	A-7720-A28H501B		A-7720-B28H501B		A-7720-C28H501B	22-45-8287	A-7720-D28H501B	22-45-7286	A-7720-E28H501B	22-45-7288	A-7720-F28H501B

--	--	--	--	--	--	--	--	--	--	--	--

REVISION:		TITLE:		SHEET No.
AZ1	SEE SHEET 1	KK 100 IDT CONNECTOR		8

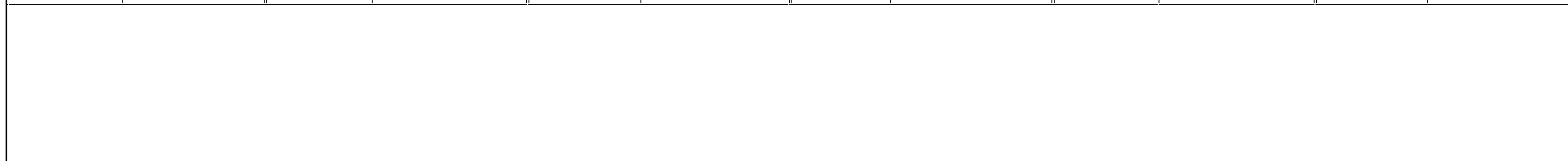
DOCUMENT NUMBER:	CREATED / REVISED BY:	CHECKED BY:	APPROVED BY:
SD-7720-001			

A-7720-ANH503B		A-7720-BNH503B		A-7720-CNH503B		A-7720-DNH503B		A-7720-ENH503B		A-7720-FNH503B	
HOUSING	7720-AN	HOUSING	7720-BN	HOUSING	7720-CN	HOUSING	7720-DN	HOUSING	7720-EN	HOUSING	7720-FN
TERM. NO	41138-H503	TERM. NO	41138-H503	TERM. NO	41138-H503	TERM. NO	41138-H503	TERM. NO	41138-H503	TERM. NO	41138-H503
PLATING:	503	PLATING:	503	PLATING:	503	PLATING:	503	PLATING:	503	PLATING:	503
COLOR	GREEN	COLOR	GREEN	COLOR	GREEN	COLOR	GREEN	COLOR	GREEN	COLOR	GREEN
MATL NO	ENG NO:	MATL NO	ENG NO:	MATL NO	ENG NO:	MATL NO	ENG NO:	MATL NO	ENG NO:	MATL NO	ENG NO:
	A-7720-A02H503B		A-7720-B02H503B	22-45-9022	A-7720-C02H503B		A-7720-D02H503B		A-7720-E02H503B		A-7720-F02H503B
	A-7720-A03H503B		A-7720-B03H503B	22-45-9032	A-7720-C03H503B		A-7720-D03H503B		A-7720-E03H503B		A-7720-F03H503B
	A-7720-A04H503B		A-7720-B04H503B	22-45-9042	A-7720-C04H503B		A-7720-D04H503B		A-7720-E04H503B	22-45-9047	A-7720-F04H503B
	A-7720-A05H503B		A-7720-B05H503B	22-45-9052	A-7720-C05H503B		A-7720-D05H503B	22-45-9055	A-7720-E05H503B	22-45-9057	A-7720-F05H503B
	A-7720-A06H503B		A-7720-B06H503B	22-45-9062	A-7720-C06H503B		A-7720-D06H503B	22-45-9065	A-7720-E06H503B	22-45-9067	A-7720-F06H503B
	A-7720-A07H503B		A-7720-B07H503B	22-45-9072	A-7720-C07H503B		A-7720-D07H503B		A-7720-E07H503B	22-45-9077	A-7720-F07H503B
	A-7720-A08H503B		A-7720-B08H503B	22-45-9082	A-7720-C08H503B		A-7720-D08H503B		A-7720-E08H503B	22-45-9087	A-7720-F08H503B
	A-7720-A09H503B		A-7720-B09H503B	22-45-9092	A-7720-C09H503B		A-7720-D09H503B		A-7720-E09H503B		A-7720-F09H503B
	A-7720-A10H503B		A-7720-B10H503B	22-45-9102	A-7720-C10H503B		A-7720-D10H503B		A-7720-E10H503B		A-7720-F10H503B
	A-7720-A11H503B		A-7720-B11H503B	22-45-9112	A-7720-C11H503B		A-7720-D11H503B		A-7720-E11H503B	22-45-9117	A-7720-F11H503B
	A-7720-A12H503B		A-7720-B12H503B	22-45-9122	A-7720-C12H503B		A-7720-D12H503B		A-7720-E12H503B		A-7720-F12H503B
	A-7720-A13H503B		A-7720-B13H503B	22-45-9132	A-7720-C13H503B		A-7720-D13H503B		A-7720-E13H503B		A-7720-F13H503B
	A-7720-A14H503B		A-7720-B14H503B	22-45-9142	A-7720-C14H503B		A-7720-D14H503B		A-7720-E14H503B		A-7720-F14H503B
	A-7720-A15H503B		A-7720-B15H503B	22-45-9152	A-7720-C15H503B		A-7720-D15H503B		A-7720-E15H503B		A-7720-F15H503B
	A-7720-A16H503B		A-7720-B16H503B	22-45-9162	A-7720-C16H503B		A-7720-D16H503B		A-7720-E16H503B		A-7720-F16H503B
	A-7720-A17H503B		A-7720-B17H503B	22-45-9172	A-7720-C17H503B		A-7720-D17H503B		A-7720-E17H503B		A-7720-F17H503B
	A-7720-A18H503B		A-7720-B18H503B	22-45-9182	A-7720-C18H503B		A-7720-D18H503B		A-7720-E18H503B		A-7720-F18H503B
	A-7720-A19H503B		A-7720-B19H503B	22-45-9192	A-7720-C19H503B		A-7720-D19H503B		A-7720-E19H503B		A-7720-F19H503B
	A-7720-A20H503B		A-7720-B20H503B	22-45-9202	A-7720-C20H503B		A-7720-D20H503B		A-7720-E20H503B		A-7720-F20H503B
	A-7720-A21H503B		A-7720-B21H503B	22-45-9212	A-7720-C21H503B		A-7720-D21H503B		A-7720-E21H503B		A-7720-F21H503B
	A-7720-A22H503B		A-7720-B22H503B	22-45-9222	A-7720-C22H503B		A-7720-D22H503B		A-7720-E22H503B		A-7720-F22H503B
	A-7720-A23H503B		A-7720-B23H503B	22-45-9232	A-7720-C23H503B		A-7720-D23H503B		A-7720-E23H503B		A-7720-F23H503B
	A-7720-A24H503B		A-7720-B24H503B	22-45-9242	A-7720-C24H503B		A-7720-D24H503B		A-7720-E24H503B		A-7720-F24H503B
	A-7720-A25H503B		A-7720-B25H503B	22-45-9252	A-7720-C25H503B		A-7720-D25H503B		A-7720-E25H503B		A-7720-F25H503B
	A-7720-A26H503B		A-7720-B26H503B	22-45-9262	A-7720-C26H503B		A-7720-D26H503B		A-7720-E26H503B		A-7720-F26H503B
	A-7720-A27H503B		A-7720-B27H503B	22-45-9272	A-7720-C27H503B		A-7720-D27H503B		A-7720-E27H503B		A-7720-F27H503B
	A-7720-A28H503B		A-7720-B28H503B	22-45-9282	A-7720-C28H503B		A-7720-D28H503B		A-7720-E28H503B		A-7720-F28H503B

REVISION: AZ1	SEE SHEET 1	TITLE: KK 100 IDT CONNECTOR	SHEET No. 10
-------------------------	-------------	---------------------------------------	------------------------

DOCUMENT NUMBER: SD-7720-001	CREATED / REVISED BY:	CHECKED BY:	APPROVED BY:
----------------------------------------	-----------------------	-------------	--------------

A-7720-ANA228A		A-7720-BNA228A		A-7720-CNA228A		A-7720-DNA228A		A-7720-ENA228A		A-7720-FNA228A	
HOUSING	7720-AN	HOUSING	7720-BN	HOUSING	7720-CN	HOUSING	7720-DN	HOUSING	7720-EN	HOUSING	7720-FN
TERM. NO	7691-A228	TERM. NO	7691-A228	TERM. NO	7691-A228	TERM. NO	7691-A228	TERM. NO	7691-A228	TERM. NO	7691-A228
PLATING:	228	PLATING:	228	PLATING:	228	PLATING:	228	PLATING:	228	PLATING:	228
COLOR	BROWN	COLOR	BROWN	COLOR	BROWN	COLOR	BROWN	COLOR	BROWN	COLOR	BROWN
MATL NO	ENG NO:	MATL NO	ENG NO:	MATL NO	ENG NO:	MATL NO	ENG NO:	MATL NO	ENG NO:	MATL NO	ENG NO:
	A-7720-A02A228A		A-7720-B02A228A	22-45-9021	A-7720-C02A228A	22-45-9020	A-7720-D02A228A	22-45-9024	A-7720-E02A228A	22-45-9029	A-7720-F02A228A
	A-7720-A03A228A		A-7720-B03A228A	22-45-9031	A-7720-C03A228A	22-45-9030	A-7720-D03A228A	22-45-9034	A-7720-E03A228A	22-45-9039	A-7720-F03A228A
	A-7720-A04A228A		A-7720-B04A228A	22-45-9041	A-7720-C04A228A	22-45-9040	A-7720-D04A228A	22-45-9044	A-7720-E04A228A	22-45-9049	A-7720-F04A228A
	A-7720-A05A228A		A-7720-B05A228A	22-45-9051	A-7720-C05A228A	22-45-9050	A-7720-D05A228A	22-45-9054	A-7720-E05A228A	22-45-9059	A-7720-F05A228A
	A-7720-A06A228A		A-7720-B06A228A	22-45-9061	A-7720-C06A228A	22-45-9060	A-7720-D06A228A	22-45-9064	A-7720-E06A228A	22-45-9069	A-7720-F06A228A
	A-7720-A07A228A		A-7720-B07A228A	22-45-9071	A-7720-C07A228A	22-45-9070	A-7720-D07A228A	22-45-9074	A-7720-E07A228A	22-45-9079	A-7720-F07A228A
	A-7720-A08A228A		A-7720-B08A228A	22-45-9081	A-7720-C08A228A	22-45-9080	A-7720-D08A228A	22-45-9084	A-7720-E08A228A	22-45-9089	A-7720-F08A228A
	A-7720-A09A228A		A-7720-B09A228A	22-45-9091	A-7720-C09A228A	22-45-9090	A-7720-D09A228A	22-45-9094	A-7720-E09A228A	22-45-9099	A-7720-F09A228A
	A-7720-A10A228A		A-7720-B10A228A	22-45-9101	A-7720-C10A228A	22-45-9100	A-7720-D10A228A	22-45-9104	A-7720-E10A228A	22-45-9109	A-7720-F10A228A
	A-7720-A11A228A		A-7720-B11A228A	22-45-9111	A-7720-C11A228A	22-45-9110	A-7720-D11A228A	22-45-9114	A-7720-E11A228A	22-45-9119	A-7720-F11A228A
	A-7720-A12A228A		A-7720-B12A228A	22-45-9121	A-7720-C12A228A	22-45-9120	A-7720-D12A228A	22-45-9124	A-7720-E12A228A	22-45-9129	A-7720-F12A228A
	A-7720-A13A228A		A-7720-B13A228A	22-45-9131	A-7720-C13A228A	22-45-9130	A-7720-D13A228A	22-45-9134	A-7720-E13A228A	22-45-9139	A-7720-F13A228A
	A-7720-A14A228A		A-7720-B14A228A	22-45-9141	A-7720-C14A228A	22-45-9140	A-7720-D14A228A	22-45-9144	A-7720-E14A228A	22-45-9149	A-7720-F14A228A
	A-7720-A15A228A		A-7720-B15A228A	22-45-9151	A-7720-C15A228A	22-45-9150	A-7720-D15A228A	22-45-9154	A-7720-E15A228A	22-45-9159	A-7720-F15A228A
	A-7720-A16A228A		A-7720-B16A228A	22-45-9161	A-7720-C16A228A	22-45-9160	A-7720-D16A228A	22-45-9164	A-7720-E16A228A	22-45-9169	A-7720-F16A228A
	A-7720-A17A228A		A-7720-B17A228A	22-45-9171	A-7720-C17A228A	22-45-9170	A-7720-D17A228A	22-45-9174	A-7720-E17A228A	22-45-9179	A-7720-F17A228A
	A-7720-A18A228A		A-7720-B18A228A	22-45-9181	A-7720-C18A228A	22-45-9180	A-7720-D18A228A	22-45-9184	A-7720-E18A228A	22-45-9189	A-7720-F18A228A
	A-7720-A19A228A		A-7720-B19A228A	22-45-9191	A-7720-C19A228A	22-45-9190	A-7720-D19A228A	22-45-9194	A-7720-E19A228A	22-45-9199	A-7720-F19A228A
	A-7720-A20A228A		A-7720-B20A228A	22-45-9201	A-7720-C20A228A	22-45-9200	A-7720-D20A228A	22-45-9204	A-7720-E20A228A	22-45-9209	A-7720-F20A228A
	A-7720-A21A228A		A-7720-B21A228A	22-45-9211	A-7720-C21A228A	22-45-9210	A-7720-D21A228A	22-45-9214	A-7720-E21A228A	22-45-9219	A-7720-F21A228A
	A-7720-A22A228A		A-7720-B22A228A	22-45-9221	A-7720-C22A228A	22-45-9220	A-7720-D22A228A	22-45-9224	A-7720-E22A228A	22-45-9229	A-7720-F22A228A
	A-7720-A23A228A		A-7720-B23A228A	22-45-9231	A-7720-C23A228A	22-45-9230	A-7720-D23A228A	22-45-9234	A-7720-E23A228A	22-45-9239	A-7720-F23A228A
	A-7720-A24A228A		A-7720-B24A228A	22-45-9241	A-7720-C24A228A	22-45-9240	A-7720-D24A228A	22-45-9244	A-7720-E24A228A	22-45-9249	A-7720-F24A228A
	A-7720-A25A228A		A-7720-B25A228A	22-45-9251	A-7720-C25A228A	22-45-9250	A-7720-D25A228A	22-45-9254	A-7720-E25A228A	22-45-9259	A-7720-F25A228A
	A-7720-A26A228A		A-7720-B26A228A	22-45-9261	A-7720-C26A228A	22-45-9260	A-7720-D26A228A	22-45-9264	A-7720-E26A228A	22-45-9269	A-7720-F26A228A
	A-7720-A27A228A		A-7720-B27A228A	22-45-9271	A-7720-C27A228A	22-45-9270	A-7720-D27A228A	22-45-9274	A-7720-E27A228A	22-45-9279	A-7720-F27A228A
	A-7720-A28A228A		A-7720-B28A228A	22-45-9281	A-7720-C28A228A	22-45-9280	A-7720-D28A228A	22-45-9284	A-7720-E28A228A	22-45-9289	A-7720-F28A228A



REVISION: AZ1	SEE SHEET 1	TITLE: KK 100 IDT CONNECTOR	SHEET No. 14
-------------------------	-------------	---------------------------------------	------------------------

DOCUMENT NUMBER: SD-7720-001	CREATED / REVISED BY:	CHECKED BY:	APPROVED BY:
----------------------------------------	-----------------------	-------------	--------------

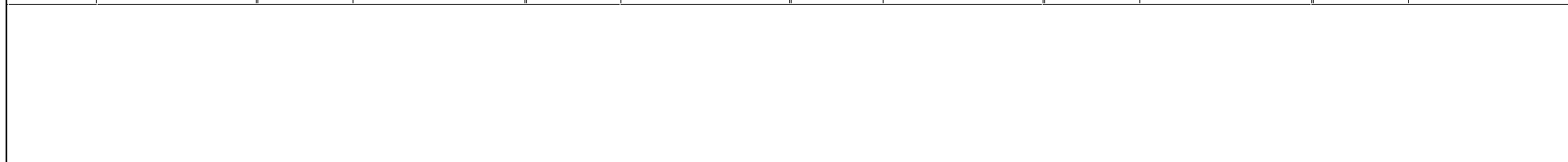
A-7720-ANH208B		A-7720-BNH208B		A-7720-CNH208B		A-7720-DNH208B		A-7720-ENH208B		A-7720-FNH208B	
HOUSING	7720-AN	HOUSING	7720-BN	HOUSING	7720-CN	HOUSING	7720-DN	HOUSING	7720-EN	HOUSING	7720-FN
TERM. NO	41138-H208	TERM. NO	41138-H208	TERM. NO	41138-H208	TERM. NO	41138-H208	TERM. NO	41138-H208	TERM. NO	41138-H208
PLATING:	208	PLATING:	208	PLATING:	208	PLATING:	208	PLATING:	208	PLATING:	208
COLOR	GREEN	COLOR	GREEN	COLOR	GREEN	COLOR	GREEN	COLOR	GREEN	COLOR	GREEN
MATL NO	ENG NO:	MATL NO	ENG NO:	MATL NO	ENG NO:	MATL NO	ENG NO:	MATL NO	ENG NO:	MATL NO	ENG NO:
	A-7720-A02H208B		A-7720-B02H208B	22-45-5023	A-7720-C02H208B		A-7720-D02H208B		A-7720-E02H208B	22-45-9028	A-7720-F02H208B
	A-7720-A03H208B		A-7720-B03H208B	22-45-5033	A-7720-C03H208B		A-7720-D03H208B		A-7720-E03H208B	22-45-9038	A-7720-F03H208B
	A-7720-A04H208B		A-7720-B04H208B	22-45-5043	A-7720-C04H208B		A-7720-D04H208B		A-7720-E04H208B	22-45-9048	A-7720-F04H208B
	A-7720-A05H208B		A-7720-B05H208B	22-45-5053	A-7720-C05H208B		A-7720-D05H208B		A-7720-E05H208B	22-45-9058	A-7720-F05H208B
	A-7720-A06H208B		A-7720-B06H208B	22-45-5063	A-7720-C06H208B		A-7720-D06H208B		A-7720-E06H208B	22-45-9068	A-7720-F06H208B
	A-7720-A07H208B		A-7720-B07H208B	22-45-5073	A-7720-C07H208B		A-7720-D07H208B		A-7720-E07H208B	22-45-9078	A-7720-F07H208B
	A-7720-A08H208B		A-7720-B08H208B	22-45-5083	A-7720-C08H208B		A-7720-D08H208B		A-7720-E08H208B	22-45-9088	A-7720-F08H208B
	A-7720-A09H208B		A-7720-B09H208B	22-45-5093	A-7720-C09H208B		A-7720-D09H208B		A-7720-E09H208B	22-45-9098	A-7720-F09H208B
	A-7720-A10H208B		A-7720-B10H208B	22-45-5103	A-7720-C10H208B		A-7720-D10H208B		A-7720-E10H208B	22-45-9108	A-7720-F10H208B
	A-7720-A11H208B		A-7720-B11H208B	22-45-5113	A-7720-C11H208B		A-7720-D11H208B		A-7720-E11H208B	22-45-9118	A-7720-F11H208B
	A-7720-A12H208B		A-7720-B12H208B	22-45-5123	A-7720-C12H208B		A-7720-D12H208B		A-7720-E12H208B	22-45-9128	A-7720-F12H208B
	A-7720-A13H208B		A-7720-B13H208B	22-45-5133	A-7720-C13H208B		A-7720-D13H208B		A-7720-E13H208B	22-45-9138	A-7720-F13H208B
	A-7720-A14H208B		A-7720-B14H208B	22-45-5143	A-7720-C14H208B		A-7720-D14H208B		A-7720-E14H208B	22-45-9148	A-7720-F14H208B
	A-7720-A15H208B		A-7720-B15H208B	22-45-5153	A-7720-C15H208B		A-7720-D15H208B		A-7720-E15H208B	22-45-9158	A-7720-F15H208B
	A-7720-A16H208B		A-7720-B16H208B	22-45-5163	A-7720-C16H208B		A-7720-D16H208B		A-7720-E16H208B	22-45-9168	A-7720-F16H208B
	A-7720-A17H208B		A-7720-B17H208B	22-45-5173	A-7720-C17H208B		A-7720-D17H208B		A-7720-E17H208B	22-45-9178	A-7720-F17H208B
	A-7720-A18H208B		A-7720-B18H208B	22-45-5183	A-7720-C18H208B		A-7720-D18H208B		A-7720-E18H208B	22-45-9188	A-7720-F18H208B
	A-7720-A19H208B		A-7720-B19H208B	22-45-5193	A-7720-C19H208B		A-7720-D19H208B		A-7720-E19H208B	22-45-9198	A-7720-F19H208B
	A-7720-A20H208B		A-7720-B20H208B	22-45-5203	A-7720-C20H208B		A-7720-D20H208B		A-7720-E20H208B	22-45-9208	A-7720-F20H208B
	A-7720-A21H208B		A-7720-B21H208B	22-45-5213	A-7720-C21H208B		A-7720-D21H208B		A-7720-E21H208B	22-45-9218	A-7720-F21H208B
	A-7720-A22H208B		A-7720-B22H208B	22-45-5223	A-7720-C22H208B		A-7720-D22H208B		A-7720-E22H208B	22-45-9228	A-7720-F22H208B
	A-7720-A23H208B		A-7720-B23H208B	22-45-5233	A-7720-C23H208B		A-7720-D23H208B		A-7720-E23H208B	22-45-9238	A-7720-F23H208B
	A-7720-A24H208B		A-7720-B24H208B	22-45-5243	A-7720-C24H208B		A-7720-D24H208B		A-7720-E24H208B	22-45-9248	A-7720-F24H208B
	A-7720-A25H208B		A-7720-B25H208B	22-45-5253	A-7720-C25H208B		A-7720-D25H208B		A-7720-E25H208B	22-45-9258	A-7720-F25H208B
	A-7720-A26H208B		A-7720-B26H208B	22-45-5263	A-7720-C26H208B		A-7720-D26H208B		A-7720-E26H208B	22-45-9268	A-7720-F26H208B
	A-7720-A27H208B		A-7720-B27H208B	22-45-5273	A-7720-C27H208B		A-7720-D27H208B		A-7720-E27H208B	22-45-9278	A-7720-F27H208B
	A-7720-A28H208B		A-7720-B28H208B	22-45-5283	A-7720-C28H208B		A-7720-D28H208B		A-7720-E28H208B	22-45-9288	A-7720-F28H208B

--	--	--	--	--	--	--	--	--	--	--	--

REVISION: AZ1	SEE SHEET 1	TITLE: KK 100 IDT CONNECTOR	SHEET No. 15
-------------------------	-------------	---------------------------------------	------------------------

DOCUMENT NUMBER: SD-7720-001	CREATED / REVISED BY:	CHECKED BY:	APPROVED BY:
----------------------------------------	-----------------------	-------------	--------------

A-7720-ANH102B		A-7720-BNH102B		A-7720-CNH102B		A-7720-DNH102B		A-7720-ENH102B		A-7720-FNH102B	
HOUSING	7720-AN	HOUSING	7720-BN	HOUSING	7720-CN	HOUSING	7720-AN	HOUSING	7720-BN	HOUSING	7720-CN
TERM. NO	41138-H102	TERM. NO	41138-H102	TERM. NO	41138-H102	TERM. NO	41138-H102	TERM. NO	41138-H102	TERM. NO	41138-H102
PLATING:	102	PLATING:	102	PLATING:	102	PLATING:	102	PLATING:	102	PLATING:	102
COLOR	GREEN	COLOR	GREEN	COLOR	GREEN	COLOR	GREEN	COLOR	GREEN	COLOR	GREEN
MATL NO	ENG NO:	MATL NO	ENG NO:	MATL NO	ENG NO:	MATL NO	ENG NO:	MATL NO	ENG NO:	MATL NO	ENG NO:
	A-7720-A02H102B		A-7720-B02H102B		A-7720-C02H102B		A-7720-D02H102B		A-7720-E02H102B	22-26-8025	A-7720-F02H102B
	A-7720-A03H102B		A-7720-B03H102B		A-7720-C03H102B		A-7720-D03H102B		A-7720-E03H102B	22-26-8035	A-7720-F03H102B
	A-7720-A04H102B		A-7720-B04H102B		A-7720-C04H102B		A-7720-D04H102B		A-7720-E04H102B	22-26-8045	A-7720-F04H102B
	A-7720-A05H102B		A-7720-B05H102B		A-7720-C05H102B		A-7720-D05H102B		A-7720-E05H102B	22-26-8055	A-7720-F05H102B
	A-7720-A06H102B		A-7720-B06H102B		A-7720-C06H102B		A-7720-D06H102B		A-7720-E06H102B	22-26-8065	A-7720-F06H102B
	A-7720-A07H102B		A-7720-B07H102B		A-7720-C07H102B		A-7720-D07H102B		A-7720-E07H102B	22-26-8075	A-7720-F07H102B
	A-7720-A08H102B		A-7720-B08H102B		A-7720-C08H102B		A-7720-D08H102B		A-7720-E08H102B	22-26-8085	A-7720-F08H102B
	A-7720-A09H102B		A-7720-B09H102B		A-7720-C09H102B		A-7720-D09H102B		A-7720-E09H102B	22-26-8095	A-7720-F09H102B
	A-7720-A10H102B		A-7720-B10H102B		A-7720-C10H102B		A-7720-D10H102B		A-7720-E10H102B	22-26-8105	A-7720-F10H102B
	A-7720-A11H102B		A-7720-B11H102B		A-7720-C11H102B		A-7720-D11H102B		A-7720-E11H102B	22-26-8115	A-7720-F11H102B
	A-7720-A12H102B		A-7720-B12H102B		A-7720-C12H102B		A-7720-D12H102B		A-7720-E12H102B	22-26-8125	A-7720-F12H102B
	A-7720-A13H102B		A-7720-B13H102B		A-7720-C13H102B		A-7720-D13H102B		A-7720-E13H102B	22-26-8135	A-7720-F13H102B
	A-7720-A14H102B		A-7720-B14H102B		A-7720-C14H102B		A-7720-D14H102B		A-7720-E14H102B	22-26-8145	A-7720-F14H102B
	A-7720-A15H102B		A-7720-B15H102B		A-7720-C15H102B		A-7720-D15H102B		A-7720-E15H102B	22-26-8155	A-7720-F15H102B
	A-7720-A16H102B		A-7720-B16H102B		A-7720-C16H102B		A-7720-D16H102B		A-7720-E16H102B	22-26-8165	A-7720-F16H102B
	A-7720-A17H102B		A-7720-B17H102B		A-7720-C17H102B		A-7720-D17H102B		A-7720-E17H102B	22-26-8175	A-7720-F17H102B
	A-7720-A18H102B		A-7720-B18H102B		A-7720-C18H102B		A-7720-D18H102B		A-7720-E18H102B	22-26-8185	A-7720-F18H102B
	A-7720-A19H102B		A-7720-B19H102B		A-7720-C19H102B		A-7720-D19H102B		A-7720-E19H102B	22-26-8195	A-7720-F19H102B
	A-7720-A20H102B		A-7720-B20H102B		A-7720-C20H102B		A-7720-D20H102B		A-7720-E20H102B	22-26-8205	A-7720-F20H102B
	A-7720-A21H102B		A-7720-B21H102B		A-7720-C21H102B		A-7720-D21H102B		A-7720-E21H102B	22-26-8215	A-7720-F21H102B
	A-7720-A22H102B		A-7720-B22H102B		A-7720-C22H102B		A-7720-D22H102B		A-7720-E22H102B	22-26-8225	A-7720-F22H102B
	A-7720-A23H102B		A-7720-B23H102B		A-7720-C23H102B		A-7720-D23H102B		A-7720-E23H102B	22-26-8235	A-7720-F23H102B
	A-7720-A24H102B		A-7720-B24H102B		A-7720-C24H102B		A-7720-D24H102B		A-7720-E24H102B	22-26-8245	A-7720-F24H102B
	A-7720-A25H102B		A-7720-B25H102B		A-7720-C25H102B		A-7720-D25H102B		A-7720-E25H102B	22-26-8255	A-7720-F25H102B
	A-7720-A26H102B		A-7720-B26H102B		A-7720-C26H102B		A-7720-D26H102B		A-7720-E26H102B	22-26-8265	A-7720-F26H102B
	A-7720-A27H102B		A-7720-B27H102B		A-7720-C27H102B		A-7720-D27H102B		A-7720-E27H102B	22-26-8275	A-7720-F27H102B
	A-7720-A28H102B		A-7720-B28H102B		A-7720-C28H102B		A-7720-D28H102B		A-7720-E28H102B	22-26-8285	A-7720-F28H102B



REVISION: AZ1	SEE SHEET 1	TITLE: KK 100 IDT CONNECTOR	SHEET No. 16
-------------------------	-------------	---------------------------------------	------------------------

DOCUMENT NUMBER: SD-7720-001	CREATED / REVISED BY:	CHECKED BY:	APPROVED BY:
----------------------------------------	-----------------------	-------------	--------------

MATL NO	ENG NO:	HOUSING	TERM. NO	PLATING:	MOLDED VOID	TERMINAL VOID	
022421243	A-7720-D24HP909C-13A	7720-D24-13	41512-H(P909)	P909	13	13	
022421213	A-7720-D21HP909C-19A	7720-D21-19	41512-H(P909)	P909	19	19	
022421223	A-7720-D22HP909C-19A	7720-D22-19	41512-H(P909)	P909	19	19	
022421155	A-7720-D15HP909C-5A	7720-D15-5	41512-H(P909)	P909	5	5	
022421156	A-7720-E15HP909B-2B	7720-E15-2	41138-H(P909)	P909	2	NONE	
022421104	A-7720-E10HP909B-9B	7720-E10-9	41138-H(P909)	P909	9	NONE	
022421124	A-7720-E12HP909B-9B	7720-E12-9	41138-H(P909)	P909	9	NONE	
022421144	A-7720-F14HP909B-51B	7720-F14-51	41138-H(P909)	P909	2,3,5,6	NONE	
022421233	A-7720-F23HP909B-2B	7720-F23-2	41138-H(P909)	P909	2	NONE	
022421183	A-7720-F18HP909B-2B	7720-F18-2	41138-H(P909)	P909	2	NONE	
022421135	A-7720-F13HP909B-2B	7720-F13-2	41138-H(P909)	P909	2	NONE	
022421175	A-7720-F17HP909B-51A	7720-F17-51	41138-H(P909)	P909	1,17	1,17	
050290032	A-7720-E17HP909B-51A	7720-E17-51	41138-H(P909)	P909	1,17	1,17	
050291609	A-7720-E21HP909B-51A	7720-E21-51	41138-H(P909)	P909	1,21	NONE	
050291615	A-7720-E19HP909B-51A	7720-E19-51	41138-H(P909)	P909	1, 19	1, 19	

REVISION: AZ1	SEE SHEET 1	TITLE: KK 100 IDT CONNECTOR	SHEET No. 17
DOCUMENT NUMBER: SD-7720-001	CREATED / REVISED BY:	CHECKED BY:	APPROVED BY:



WIRE TERMINATION SPECIFICATION

1.0 SCOPE:

THIS SPECIFICATION IS DESIGNED TO INSURE THE PROPER PERFORMANCE OF THE 7720 AND THE 40555 SERIES I.D.T. CONNECTOR SYSTEMS.

2.0 APPLICABLE DRAWINGS:

PRODUCTS CONFORMING TO THIS SPECIFICATION ARE NOTED ON THE INDIVIDUAL SALES DRAWINGS.

3.0 CONDUCTOR REQUIREMENTS:

3.1 CONDUCTOR:

- 28-24 AWG SOLID TINNED COPPER WIRE
- 28-22 AWG (7 STRAND) CONCENTRIC STRANDED TINNED COPPER WIRE
- 28-24 AWG (7 STRAND) CONCENTRIC STRANDED TOPCOATED OR FUSED COPPER WIRE

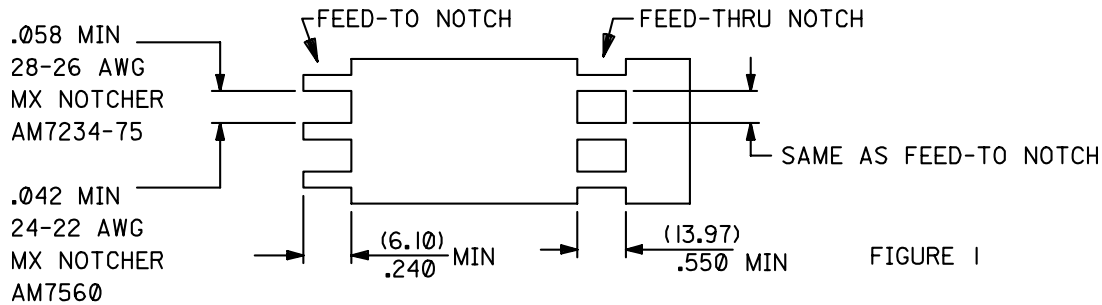
3.2 INSULATION:

DISCRETE WIRE:

UL STYLE 1007 OR 1061 WITH PCV INSULATION. INSULATION DIA. OF (1.52)/.060 MAX. WHEN TERMINATING WIRES ONE POSITION AT A TIME, OR (1.27)/.050 DIA. MAX. WHEN MASS TERMINATING.

MOLEX CABLE:

UL STYLE 2651 (STRANDED WIRE MUST HAVE 7 STRANDS) ON (2.54)/.100 CENTERS. MOLEX CABLE NUMBERS 24241, 7767, 8997, 7234, 7307, 24226, 7560, 8996 SEE FIGURES 1 AND 2 FOR CABLE PREPARATION.



SHT	1	2	3	4	5	6														
REVISE ON PC ONLY							TITLE													
D							UPDATE EC U50393 9-9-96 SAMIEC													
REV							DESCRIPTION													
DESIGN CONTROL							STATUS		WRITTEN BY:		CHECKED BY:		APPROVED BY:		DATE: YR / MO / DAY					
LISLE							M		SAMIEC		R EDGLEY		B LENZ		96 /02/08					

DOCUMENT NO.	FILE	SHT NO.
SMES-7720-0002	77200002	1 OF 6

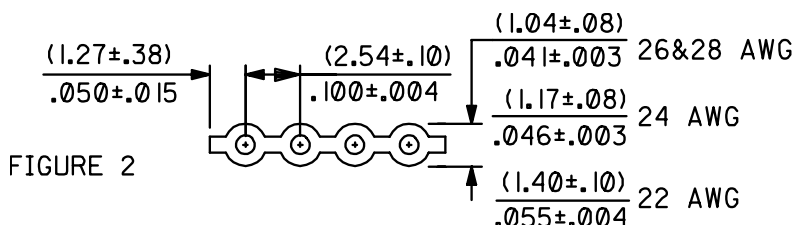


FIGURE 2

4.0 CONDUCTOR REQUIREMENTS: SEE FIGURE 3

4.1 CONDUCTOR SIZE IDENTIFICATION:

TERMINALS STAMPED WITH THE LETTER "A" ACCEPT MOLEX CABLE NO'S.

- 7234- 26 AWG SOLID TINNED COPPER
- 24241- 26 AWG STRANDED TINNED COPPER
- 7307- 28 AWG STRANDED TINNED COPPER
- 7767- 28 AWG STRANDED TOPCOAT COPPER

TERMINALS STAMPED WITH THE LETTER "A" ACCEPT WIRE THAT MEETS REQUIREMENTS IN SECTION 3.0

- 28 AWG STRANDED TINNED COPPER
- 28 AWG SOLID TINNED COPPER
- 28 AWG STRANDED TOPCOATED COPPER
- 26 AWG STRANDED TINNED COPPER
- 26 AWG SOLID TINNED COPPER

TERMINALS STAMPED WITH THE LETTER "H" ACCEPT MOLEX CABLE NO'S..

- 8996- 26 AWG STRANDED TOPCOATED COPPER
- 8997- 24 AWG STRANDED TOPCOATED COPPER
- 24226- 24 AWG STRANDED TINNED COPPER

TERMINALS STAMPED WITH THE LETTER "H" ACCEPT WIRE THAT MEETS REQUIREMENTS IN SECTION 3.0

- 24 AWG SOLID TINNED COPPER
- 26 AWG STRANDED TOPCOATED COPPER
- 24 AWG STRANDED TINNED COPPER
- 24 AWG STRANDED TOPCOATED COPPER

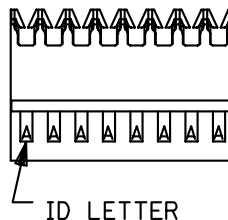
TERMINALS STAMPED WITH THE LETTER "F" ACCEPT MOLEX CABLE NO'S.

- 7560- 22 AWG STRANDED TINNED COPPER

TERMINALS STAMPED WITH THE LETTER "F" ACCEPT WIRE THAT MEETS REQUIREMENTS IN SECTION 3.0 WHEN USED IN ASSEMBLY A-7720-W*

- 22 AWG STRANDED TINNED COPPER

FIGURE 3



D	SEE SHEET 1
REV	DESCRIPTION

THIS DOCUMENT CONTAINS INFORMATION THAT IS PROPRIETARY TO MOLEX INC. AND SHOULD NOT BE USED WITHOUT WRITTEN PERMISSION

DOCUMENT NO. SMES-7720-0002	FILE NAME	SHEET
--------------------------------	-----------	-------



**5.0 MOLEX TERMINATION TOOLING: REQUIRED FOR TERMINATING 22 AWG CONDUCTORS
DISCRETE WIRE = CAM4 / 62300-0100**

CABLE = AM 8640 / 011-20-0412
AM8640B / 011-20-0771

6.0 TERMINATION REQUIREMENTS:

6.1 CABLE INSERTION DEPTH:

CABLE SHOULD BE INSERTED TO DEPTH WHERE THE MOLDED WIRE STRAIN RELIEF'S CAN RETURN TO THEIR NORMAL POSITION, AND A GAP IS MAINTAINED BETWEEN THE WIRE AND THE BOTTOM OF THE STRAIN RELIEF WINDOW, AS SHOWN IN FIGURE 4.

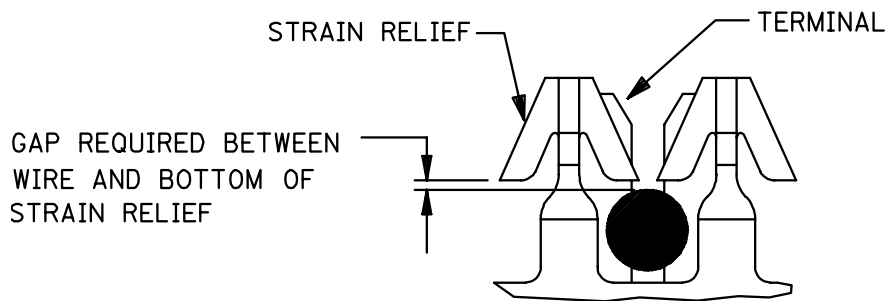


FIGURE 4

6.2 EXPOSED CONDUCTOR

EXPOSED CONDUCTORS SHALL NOT EXCEED THE LIMITS SPECIFIED IN FIGURE 5 AFTER TERMINATION

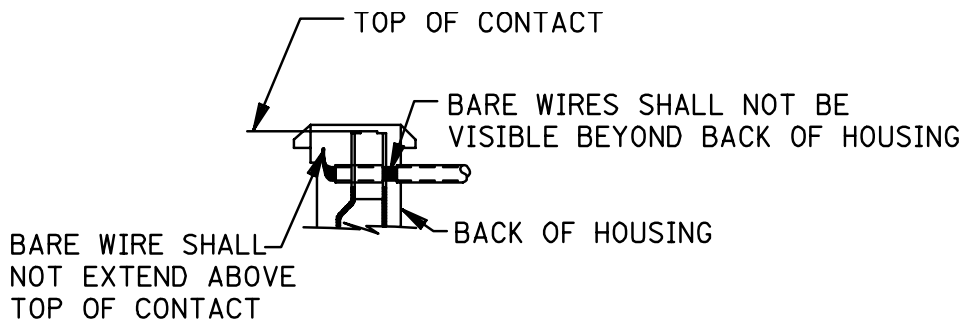


FIGURE 5

D	SEE SHEET 1
REV	DESCRIPTION

THIS DOCUMENT CONTAINS INFORMATION THAT IS PROPRIETARY TO MOLEX INC. AND SHOULD NOT BE USED WITHOUT WRITTEN PERMISSION

DOCUMENT NO. SMES-7720-0002	FILE NAME	SHEET
--------------------------------	-----------	-------



6.3 THE WIRE MUST BE DISPLACED IN BOTH INSULATION DISPLACEMENT SLOTS AND MUST PROTRUDE THROUGH THE SECONDARY SLOT BY (.63)/.025 MIN. AS SHOWN IN FIGURE 6.

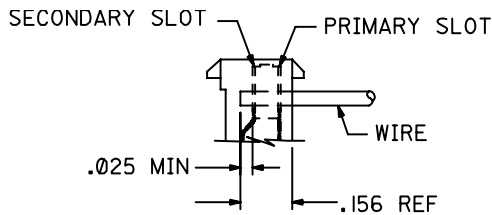


FIGURE 6

6.4 HORIZONTAL PULL OUT FORCE:

THE CONNECTOR MUST MAINTAIN THE FOLLOWING MIN. PULL OUT VALUES WHEN A FORCE IS APPLIED AT A RATE OF 1 INCH PER MINUTE TO THE CABLE IN A DIRECTION PERPENDICULAR TO THE INSULATION DISPLACEMENT SECTION, AS SHOWN IN FIGURE 7. (NOTE CABLE MUST BE SLIT TO FORM INDIVIDUAL CONDUCTORS AFTER TERMINATION BUT PRIOR TO TESTING).

AWG	PULL FORCE
24 AWG	8.0 LBS MIN
26 AWG	4.6 LBS MIN
28 AWG	3.9 LBS MIN

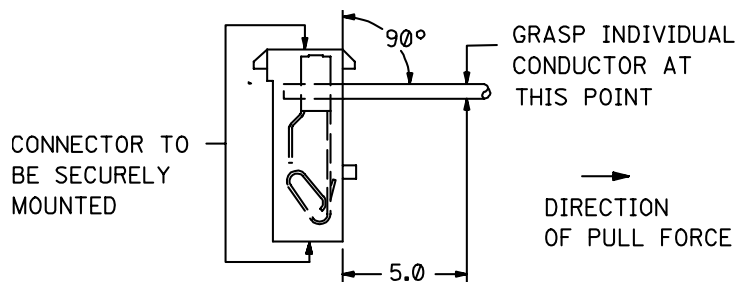


FIGURE 7

6.5 VERTICAL PULL OUT FORCE

THE CONNECTOR MUST MAINTAIN THE FOLLOWING MIN. PULL OUT VALUES WHEN A FORCE IS APPLIED AT A RATE OF 1 INCH PER MINUTE TO THE CABLE IN A DIRECTION PARALLEL TO THE INSULATION DISPLACEMENT SECTION, AS SHOWN IN FIGURE 8. (NOTE CABLE MUST BE SLIT TO FORM INDIVIDUAL CONDUCTORS AFTER TERMINATION BUT PRIOR TO TESTING. TEST IS PERFORMED WITHOUT STRAIN RELIEF COVERS.)

AWG	PULL FORCE
22 AWG	TO BE DETERMINED
24 AWG	1.5 LBS MIN.
26 AWG	1.5 LBS MIN.
28 AWG	1.5 LBS MIN.

D	SEE SHEET 1
REV	DESCRIPTION

THIS DOCUMENT CONTAINS INFORMATION THAT IS PROPRIETARY TO MOLEX INC. AND SHOULD NOT BE USED WITHOUT WRITTEN PERMISSION

DOCUMENT NO. SMES-7720-0002	FILE NAME	SHEET
--------------------------------	-----------	-------

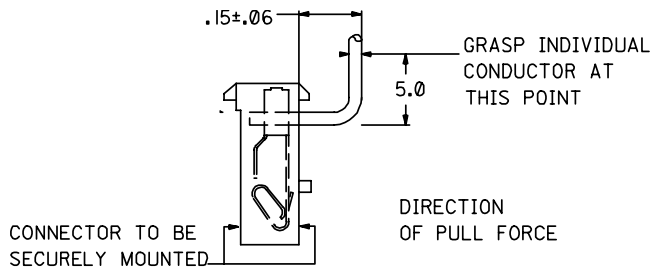


FIGURE 8

6.6 TORSIONAL RESISTANCE

CONNECTOR MUST WITHSTAND A MAXIMUM TWIST ON A TERMINATED CABLE OF 130 DEG. WITHOUT DISTURBING THE INSULATION DISPLACEMENT INTERFACE IN THE PRIMARY OR SECONDARY SLOTS (SEE FIGURE 9). (NOTE CABLE MUST BE SLIT TO FORM INDIVIDUAL CONDUCTORS AFTER TERMINATION BUT PRIOR TO TESTING).

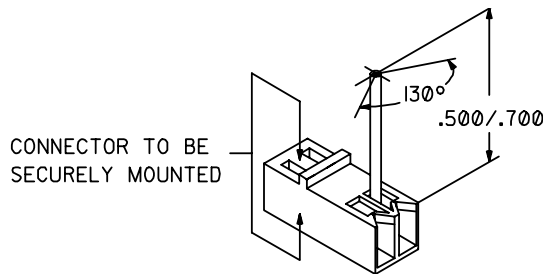


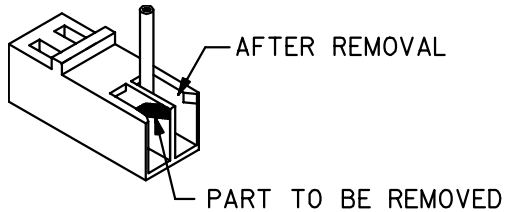
FIGURE 9

6.7 VISUAL INSPECTION:

AFTER TERMINATION, INSULATION DISPLACEMENT SECTION OF THE TERMINAL TO BE FREE OF TOOL MARKS FROM TERMINATION EQUIPMENT.

TERMINATION EVALUATION PROCEDURE

STEP 1 STRAIN RELIEF REMOVAL - REMOVE SHADED PORTION OF THE STRAIN RELIEF USING A RAZOR BLADE



D	SEE SHEET 1
REV	DESCRIPTION

THIS DOCUMENT CONTAINS INFORMATION THAT IS PROPRIETARY TO MOLEX INC. AND SHOULD NOT BE USED WITHOUT WRITTEN PERMISSION

DOCUMENT NO. SMES-7720-0002	FILE NAME	SHEET
--------------------------------	-----------	-------

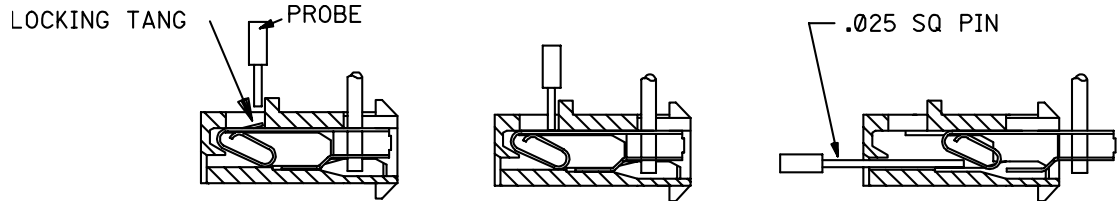


ENGINEERING SPECIFICATION

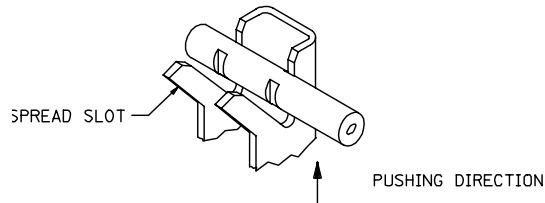


ENGLISH

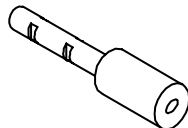
STEP 2 REMOVAL OF TERMINAL - INSERT PROBE INTO LOCKING TANG WINDOW AND DEPRESS THE LOCKING TANG UNTIL IT CLEARS HOUSING, THEN PUSH THE TERMINAL OUT OF THE HOUSING USING A BLUNT .025 SQ. PIN



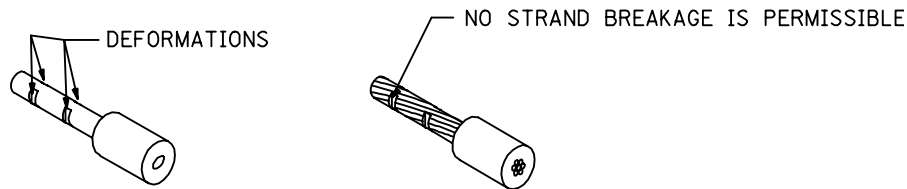
STEP 3 CONDUCTOR REMOVAL - USING A SMALL PAIR OF PLIERS SPREAD THE I.D.T. SLOT AND REMOVE CONDUCTOR BY PUSHING IN DIRECTION SHOWN.



STEP 4 REMOVING INSULATION - INSULATION TO BE REMOVED WITHOUT DISTURBING I.D.T. AREA



STEP 5 CONDUCTOR INSPECTION - FOUR DEFORMATION POINTS MUST BE CLEARLY VISIBLE WHEN USING 10X MAGNIFICATION.



D	SEE SHEET 1
REV	DESCRIPTION

THIS DOCUMENT CONTAINS INFORMATION THAT IS PROPRIETARY TO MOLEX INC. AND SHOULD NOT BE USED WITHOUT WRITTEN PERMISSION

DOCUMENT NO.

SMES-7720-0002

FILE NAME

SHEET

ES-40000-3996 REV. A SHEET 4 95/MAR/10 EC U5-0926 DCBRD03.SAM



ENGINEERING SPECIFICATION



ENGLISH

D	SEE SHEET 1
REV	DESCRIPTION

THIS DOCUMENT CONTAINS INFORMATION THAT IS PROPRIETARY TO MOLEX INC. AND SHOULD NOT BE USED WITHOUT WRITTEN PERMISSION

DOCUMENT NO. SMES-7720-0002		FILE NAME	SHEET
--------------------------------	--	-----------	-------