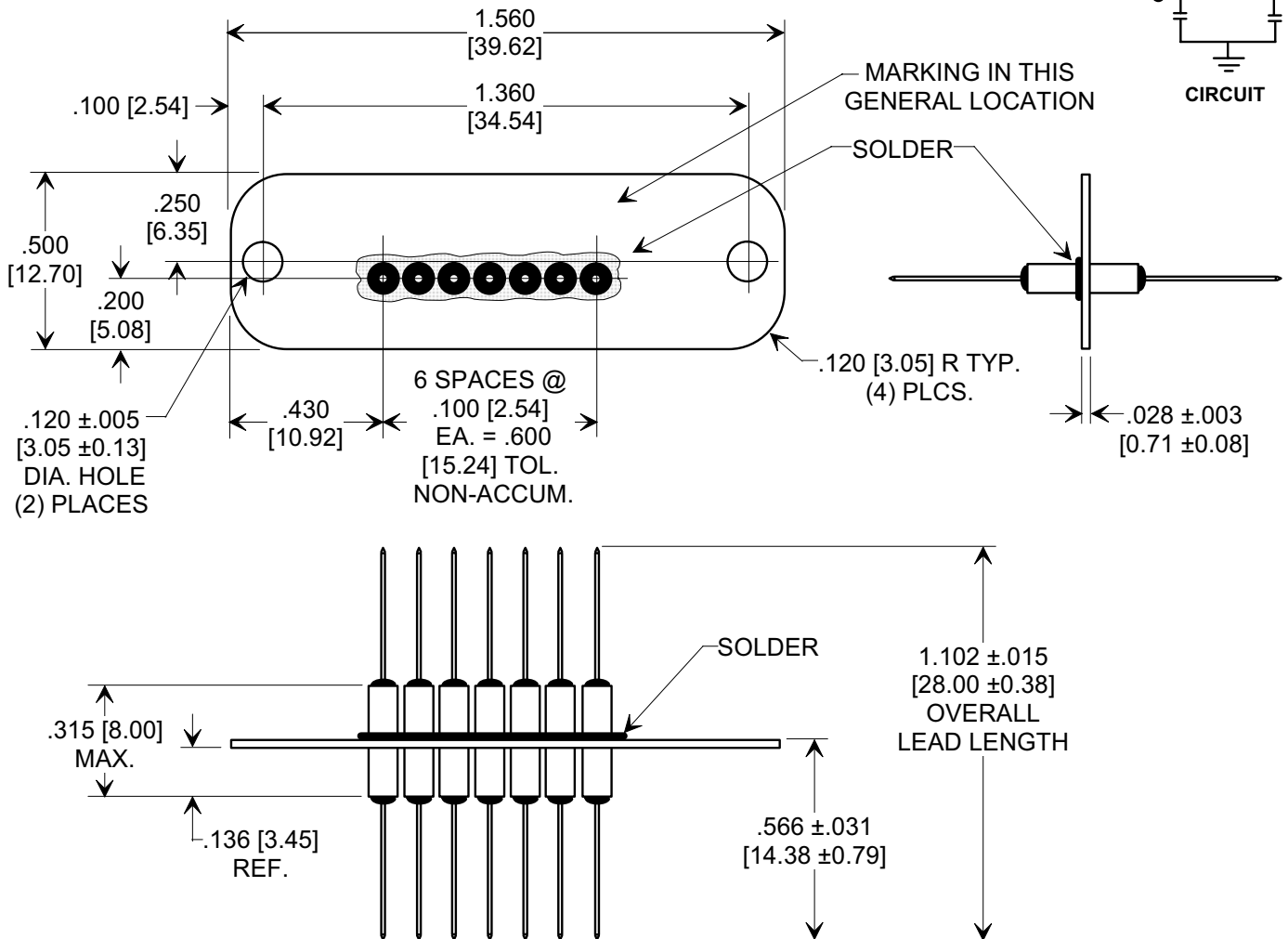
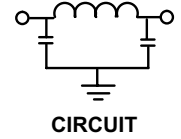
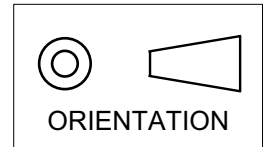


MARKETING SALES DRAWING

DIMENSIONS IN INCHES - DO NOT SCALE THIS DRAWING
 DIMENSIONS IN METRIC - []

Electrical Testing
 per Tusonix standard
 test plans and Mil-Std-202
 Test Methods.



NOTE:

- MATERIALS:
 PLATE: .028" ±0.003[0.71 ±0.08] BRASS, MATTE TIN FINISH.
 LEADS: .025"±.002[0.63 ±0.05] DIA. PHOSPHOR BRONZE, GOLD OVER NICKEL FINISH.
- MARKING TO BE TUSONIX PRODUCTION PART NUMBER AND DATE CODE.

Cx (pF)	CIRCUIT	WVDC (+125°C)	IR (MIN.)	CURRENT I _{dc} (A)	MINIMUM NO LOAD INSERTION LOSS @ 25°C (dB) PER MIL-STD-220		
					10 MHz	100 MHz	1 GHz
5000/10000	π	100	10 G Ω	5	14	55	70

X-2015 Rev-0 REVISION RECORD Original Release C.O. 20000503-1-01	0	--TOLERANCES-- Unless Otherwise Specified DECIMAL ± .010 [0.25] ANGLES ±	Title FILTER PLATE 7 POSITION	
	Drawn S.M. 05-03-00 Scale 2 X			
	Approved H.R. 05-03-00			
	TUSONIX TUCSON, ARIZONA		A	7907-001