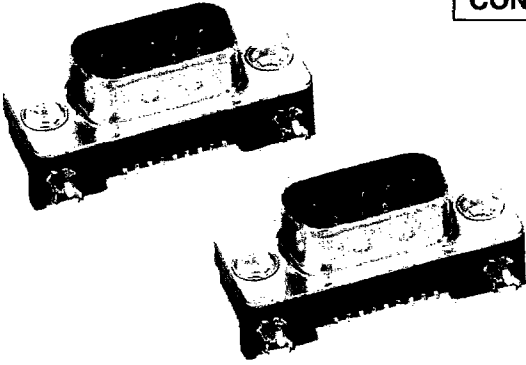
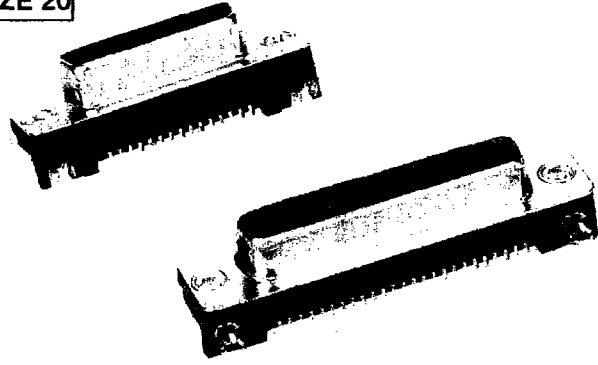


CONTACT SIZE 20



PLUG



RECEPTACLE

FEATURES

- * WIDELY USED IN NOTEBOOK PC
- * HIGH RELIABILITY
- * HIGH DURABILITY
- * INTEGRATED THERMOPLASTIC INSULATOR
- * GOLD PLATING CONTACT

MATERIALS/FINISHES

INSULATOR
THERMOPLASTIC (UL 94V-0, MOLDED BLACK)

CONTACT
COPPER ALLOY
CONTACT AREA
GOLD OVER Ni (50u" MIN.)
SOLDER AREA
TIN/LEAD (100u" MIN.) OVER Ni (50u" MIN.)

SHELL
STEEL
Ni PLATING

SPECIFICATION

ELECTRICAL CHARACTERISTICS :

- * LOW LEVEL CONTACT RESISTANCE : 15 mΩ MAX.
- * DIELECTRIC WITHSTANDING VOLTAGE : 750 VAC MIN.
- * INSULATION RESISTANCE : 5000 MΩ MIN.
- * CONTACT CURRENT RATING : 3 Ampere

MECHANICAL CHARACTERISTICS :

- * CONTACT ENGAGEMENT FORCE 12 oz. MAX.
- * CONTACT SEPRATION FORCE : 0.75 oz. MIN.
- * CONTACT RETENTION FORCE : 6 lbs MIN.
- * DURABILITY : 500 CYCLES
- * OPERATING TEMPERATURE : -55°C TO +105°C

ORDER INFORMATION

DS N N N N N — XN

D-SUB SMT SERIES

TERMINATOR TYPE
0 = PARALLEL

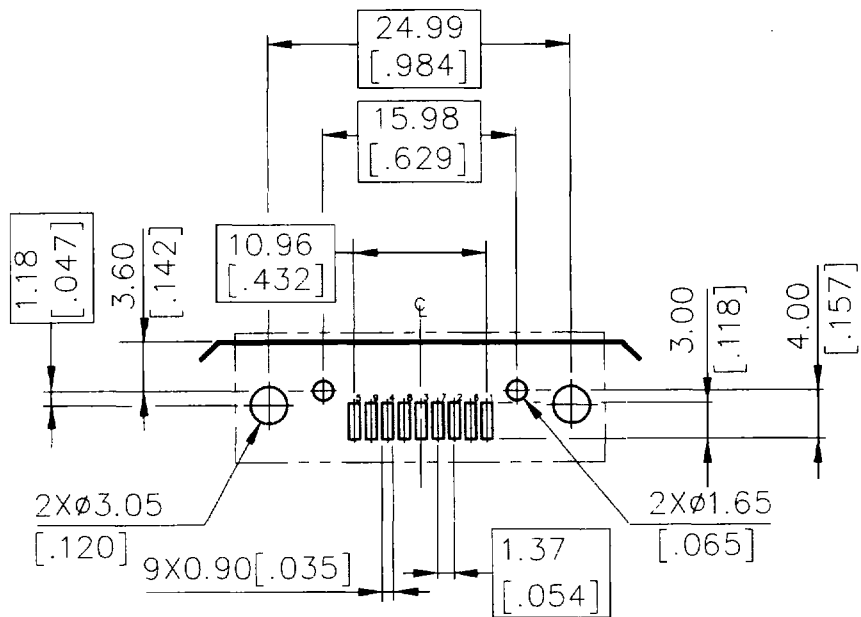
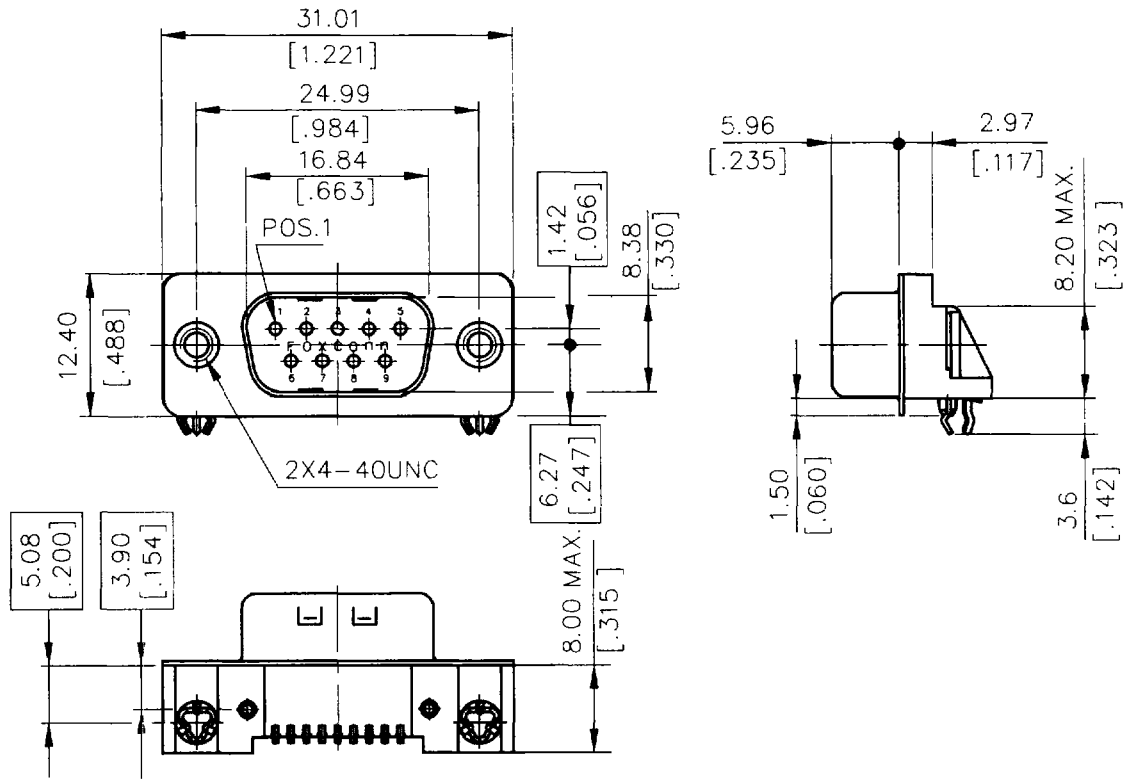
CONTACT DESIGN TYPE
0 = MALE
1 = FEMALE

NO. OF CONTACT POSITION
CONTACT SIZE 20
1 = 9 PIN
2 = 15 PIN
3 = 25 PIN

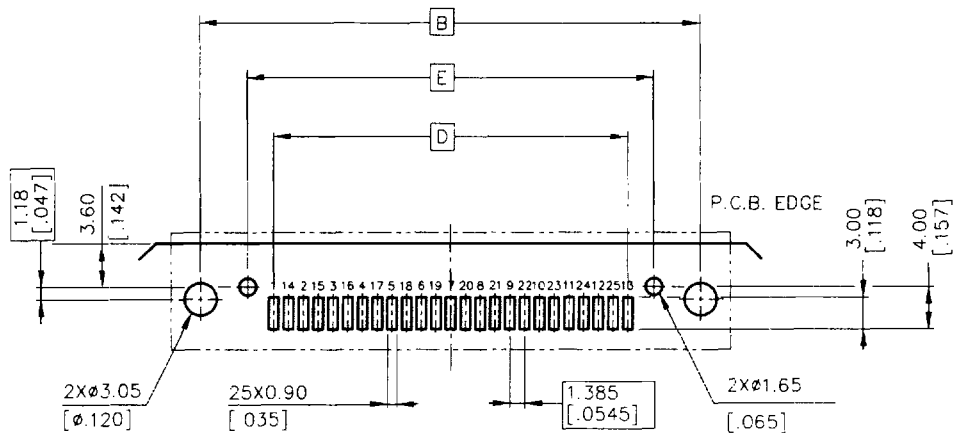
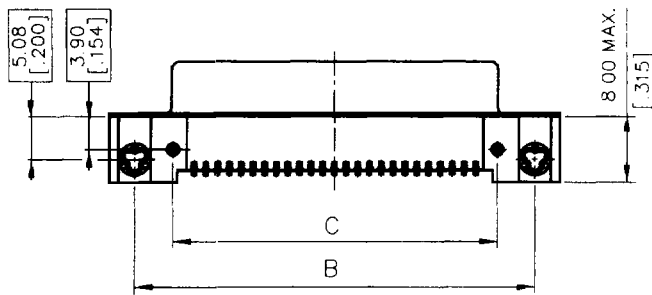
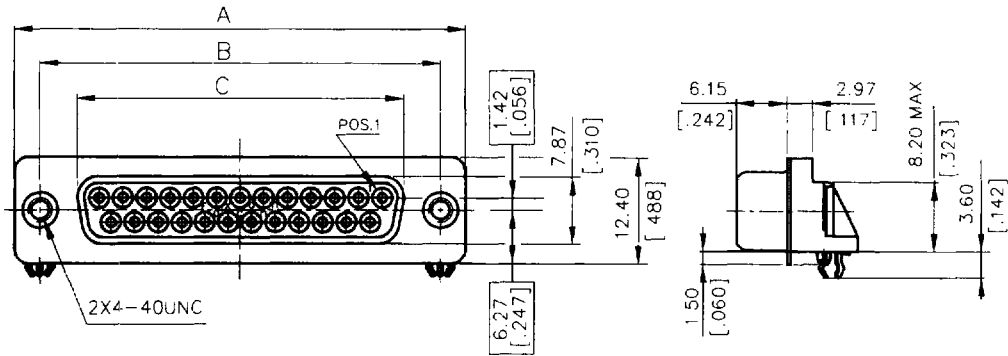
MODIFICATION CODE
D2 = SHORT BODY, HI-TEMP

CONTACT PLATING
1 = GOLD FLASH
3 = 30 u" GOLD PLATING

R/A BODY LENGTH
2 = 5.08 mm
[0.200] inch



PROD. NO.	DS0012□-D2
-----------	------------



RECOMMENDED P.C.B. LAYOUT
(TOP VIEW)

DS0132□-D2	25	53.04 [2.088]	47.04 [1.852]	38.36 [1.510]	33.24 [1.309]	38.12 [1.500]
DS0122□-D2	15	39.01 [1.536]	33.32 [1.312]	24.64 [0.970]	19.52 [0.768]	24.40 [0.961]
PROD. NO.	NO. OF POS.	A	B	C	D	E