

Terminations

Flange Mount Type

DC - 18 GHz - 0.5 Watt Performance

- Low VSWR Performance
- Tab, Slot, or Rod Contact for Microstrip use
- Interchangeable Transition Contact Pins
- 0.375, 0.50, 0.687, and 1.00 inch Standard Square Flanges

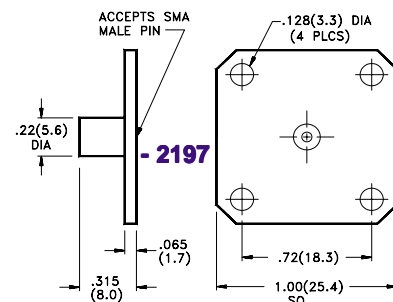
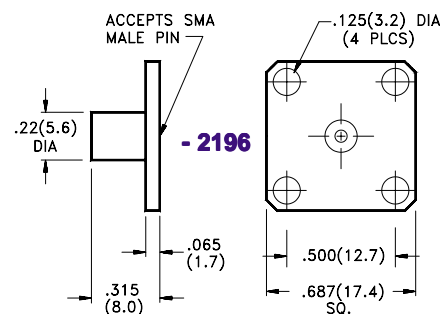
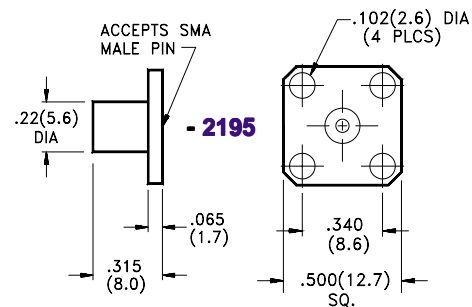
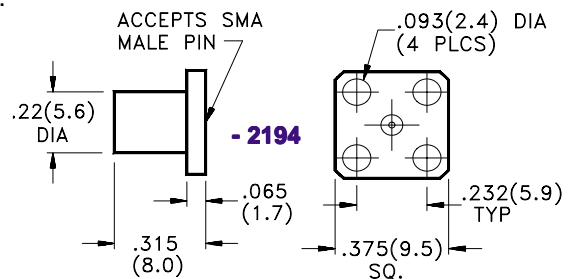
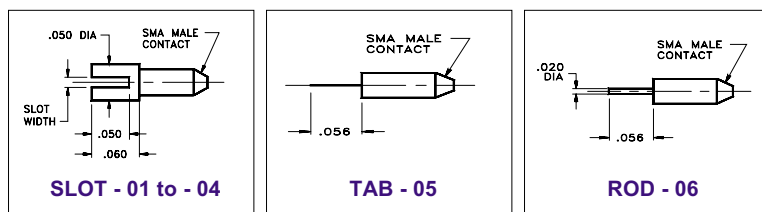
This series of flange mounted Terminations are ideally suited for use on microstrip packages where size and weight are a consideration. By combining the Termination into the launching flange, space and weight saving as well as cost is accomplished. The units utilize a sliding contact method that provides isolation from expansion stress as a result of temperature changes. The units are ruggedly constructed of stainless steel and are temperature stabilized for use in hostile environments.



Model No.	Contact Type	VSWR
TRM-XXXX--YY-FLG-02	Slot (See table)	1.10 @ DC - 4 GHz 1.20 @ 4 - 12.4 GHz 1.30 @ 12.4 - 18 GHz
TRM-XXXX--YY-FLG-02	Tab	1.10 @ DC - 4 GHz 1.20 @ 4 - 12.4 GHz 1.30 @ 12.4 - 18 GHz
TRM-XXXX--YY-FLG-02	0.020 Dia. Rod	1.10 @ DC - 4 GHz 1.20 @ 4 - 12.4 GHz 1.30 @ 12.4 - 18 GHz

Note: When ordering, select flange size and replace "XXXX" with the four digits that are shown below the figure with the flange size desired.
To select the type center contact and slot width (if applicable), replace "YY" with dash No. for desired male contact pin with Slot width, Tab, or Rod.
(See Selection Table below)

Contact Type	Dimension	- YY
Slot	WIDTH	0.012
		0.018
		0.028
		0.036
Tab	0.005 Thk x 0.050 wide	- 05
Rod	0.020 Dia.	- 06



Note: All Models are available with EMI gasketed flange face, designate by substituting "EMI" for "FLG" in Model No.