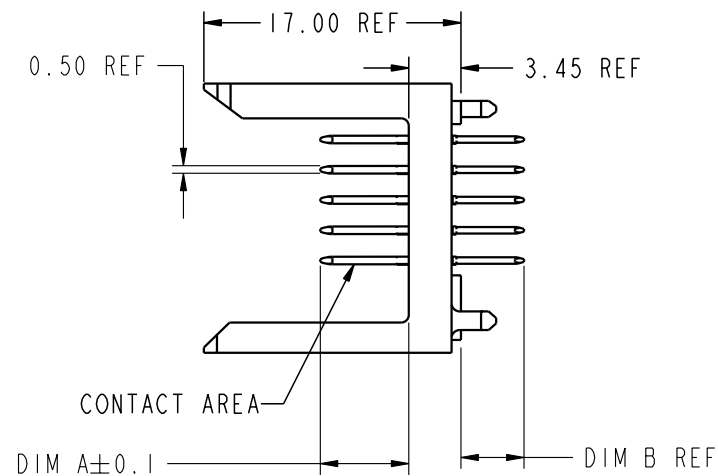
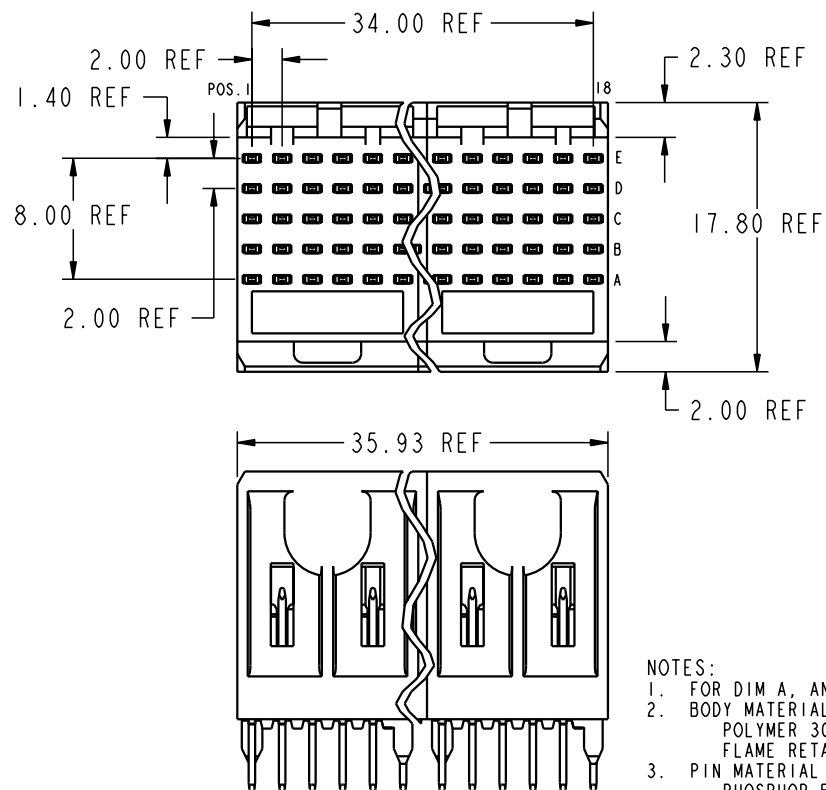


PRODUCT NUMBER
55427-XYX



NOTES:

- FOR DIM A, AND B SEE SHEET 2 AND UP.
- BODY MATERIAL: LIQUID CRYSTAL POLYMER 30 % GLASS. FLAME RETARDANT ACC. UL 94-V0.
- PIN MATERIAL: PHOSPHOR BRONZE.
- PLATING ON TAIL AREA SnPb. PLATING ON CONTACT AREA CONFORMS TO PERFORMANCE LEVEL SHOWN IN TABLE BELOW.
- PRODUCT MARKING: PART NUMBER DESIGNATION & BATCH I.D.
- ALL PRODUCTS WITH PART NUMBERS SHOWN IN SUBSEQUENT TABLES WILL BE PACKAGED IN TUBES. IF TRAY PACKAGING IS REQUIRED, SUFFIX "P" WILL BE ADDED TO THE END OF THE PART NUMBER. EXAMPLE: XXXXX-XXXXP

PLATING IN CONTACT AREA	
DASH NUMBER	PERFORMANCE LEVEL
-1YY	TELCORDIA CO
-2YY	TELECOM CLASS
-3YY	IEC CLASS I
-5YY	TELCORDIA UE
-9YY	0.76μm GXT

mat'l code				tolerances unless otherwise specified		CUSTOMER		FCI ELECTRONICS	
lfr	ecr no.	dr	date	linear	0.X ± 0.3	COPY		www.fciconnect.com	
A	V02565	TAB	10/02/00	linear	0.XX ± 0.13	projection			
B	V10907	CGD	02/22/01	linear	.xxx ± .051				
C	V11898	JWS	08/29/01	angles	0° ± 2°				
				dr	T.BRUNGARD 11/19/99	MM			
				enr	M.STRAWSER 11/19/99	scale			
				chr	M.STRAWSER 11/19/99				
				appd	M.STRAWSER 02/29/00				
sheet index	revision sheet	C	C	C					
		1	2	3					

PLATING IN CONTACT AREA	
DASH NUMBER	PERFORMANCE LEVEL
-1YY	TELCORDIA CO
-2YY	TELECOM CLASS
-3YY	IEC CLASS I
-5YY	TELCORDIA UE
-9YY	0.76μm GXT

Pro/E

PDM: Rev:C

STATUS: Released

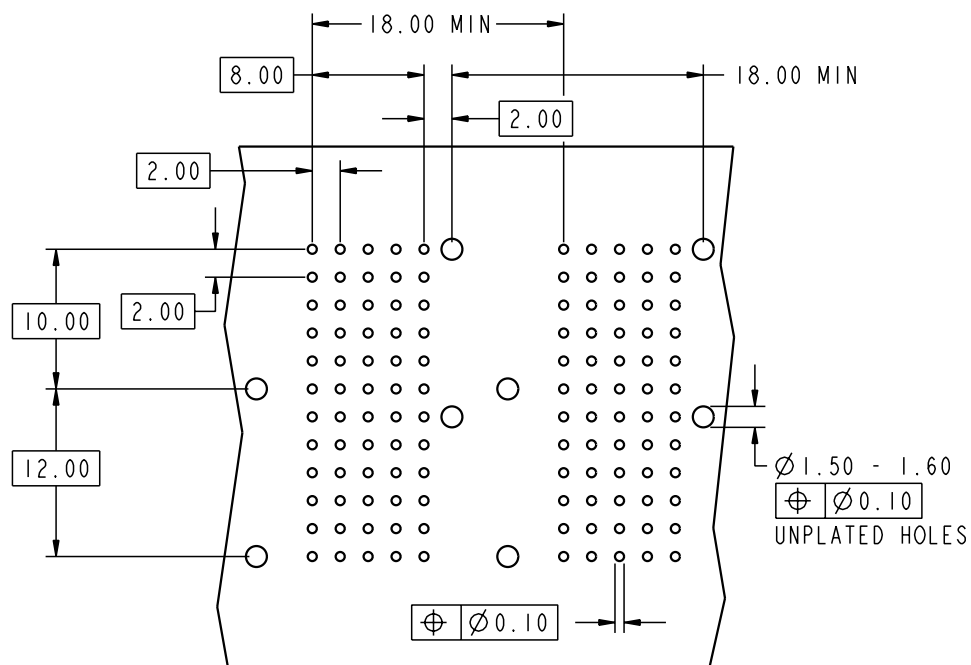
Printed: May 01, 2002

cage code 22526

Tous droits strictement reserves. Reproduction ou communication a des tiers interdite sous quelque forme que ce soit sans autorisation écrite du propriétaire. Propriété de c FCI. Droits de reproduction FCI.




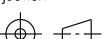


All rights strictly reserved. Reproduction or issue to third parties in any form whatever is not permitted without written authority from the proprietor. Property of FCI. Copyright FCI.




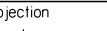

REQUIRED PC BOARD LAYOUT
COMPONENT SIDE

SEE PRINT 58351 FOR
ADDITIONAL PCB INFORMATION

KEY		
CODE	DIMENSIONS	
	DIM "A" MATE	DIM "B" TAIL
3	6.50	4.25

mat'l code				-				tolerances unless otherwise specified				CUSTOMER				 ELECTRONICS www.fciconnect.com																																																																																																																																																																																																																																																																																																																																																																																																																																																																																																																																																																																																																																																																																																																																																																																																																																																																																																																																																																																																																																																																																																																																																																																																																																																																																																																																						
ltr	ecr no.	dr	date	linear	0. X ± 0.3				COPY								title METRAL SIGNAL HEADER 3 MOD, 5 ROW SPECIAL STB																																																																																																																																																																																																																																																																																																																																																																																																																																																																																																																																																																																																																																																																																																																																																																																																																																																																																																																																																																																																																																																																																																																																																																																																																																																																																																																																					
C					0. XX ± 0.13				projection																																																																																																																																																																																																																																																																																																																																																																																																																																																																																																																																																																																																																																																																																																																																																																																																																																																																																																																																																																																																																																																																																																																																																																																																																																																																																																																																													
					.XXX ± .051																																																																																																																																																																																																																																																																																																																																																																																																																																																																																																																																																																																																																																																																																																																																																																																																																																																																																																																																																																																																																																																																																																																																																																																																																																																																																																																																																	
				angles	0° ± 2°																																																																																																																																																																																																																																																																																																																																																																																																																																																																																																																																																																																																																																																																																																																																																																																																																																																																																																																																																																																																																																																																																																																																																																																																																																																																																																																																																	
				dr	T.BRUNGARD 11/19/99				MM 				product family				METRAL				code																																																																																																																																																																																																																																																																																																																																																																																																																																																																																																																																																																																																																																																																																																																																																																																																																																																																																																																																																																																																																																																																																																																																																																																																																																																																																																																																	
				enrg	M. STRAWSER 11/19/99												size				dwg no				213																																																																																																																																																																																																																																																																																																																																																																																																																																																																																																																																																																																																																																																																																																																																																																																																																																																																																																																																																																																																																																																																																																																																																																																																																																																																																																																													
				chr	M. STRAWSER 11/19/99																				sheet																																																																																																																																																																																																																																																																																																																																																																																																																																																																																																																																																																																																																																																																																																																																																																																																																																																																																																																																																																																																																																																																																																																																																																																																																																																																																																																													
				appd	M. STRAWSER 02/29/00				scale				2:1				A				55427				2																																																																																																																																																																																																																																																																																																																																																																																																																																																																																																																																																																																																																																																																																																																																																																																																																																																																																																																																																																																																																																																																																																																																																																																																																																																																																																																													
sheet index		revision sheet																																																																																																																																																																																																																																																																																																																																																																																																																																																																																																																																																																																																																																																																																																																																																																																																																																																																																																																																																																																																																																																																																																																																																																																																																																																																																																																																																				

All rights strictly reserved. Reproduction or issue to third parties in any form whatever is not permitted without written authority from the proprietor. Property of FCI. Copyright FCI.

mat'l code				tolerances unless otherwise specified		CUSTOMER		 ELECTRONICS www.fciconnect.com	
ltr	ecn no.	dr	date	linear	0. X \pm 0.3	COPY	projection		title METRAL SIGNAL HEADER 3 MOD, 5 ROW SPECIAL STB
C					0. XX \pm 0.13				
				angles	.XXX \pm .051				
					0° \pm 2°				
		dr		T. BRUNGARD	11/19/99	 MM	scale	product family METRAL	code 213
		enrg		M. STRAWSER	11/19/99				
		chr		M. STRAWSER	11/19/99			size 55427	sheet 3
		appd		M. STRAWSER	02/29/00				
sheet index	revision sheet								

Printed: May 01, 2002